

1. Bitumen Access Road

SURFACE COURSE:
40mm thick Close Graded Macadam AC10 PEN 40/60, min PSV 60 to specification for highway works Clause 912.

LAYING COURSE
60mm thick Dense Bitumen Macadam AC20 PEN 40/60 to specification for highway works Clause 906.

BASE:
100 mm thick Dense Bitumen Macadam AC 32 PEN 40/60 to specification for highway works Clause 903

SUB-BASE:
250mm thickness compacted granular material DTp Type 1 in accordance with Specification for Highway Works clause 803. (Based on min 5% CBR, see note 5.)

SEPARATION MEMBRANE:
Terram 1000 Separation membrane.

3. Bitumen Footpath Paving, No Vehicle Loading

SURFACE COURSE:
20mm thick AC6 dense surf 100/150 PEN Min PSV45 to SHW cl909 and PD6691

BINDER COURSE
60mm thick AC20 dense bin 100/150 PEN to SHW cl929

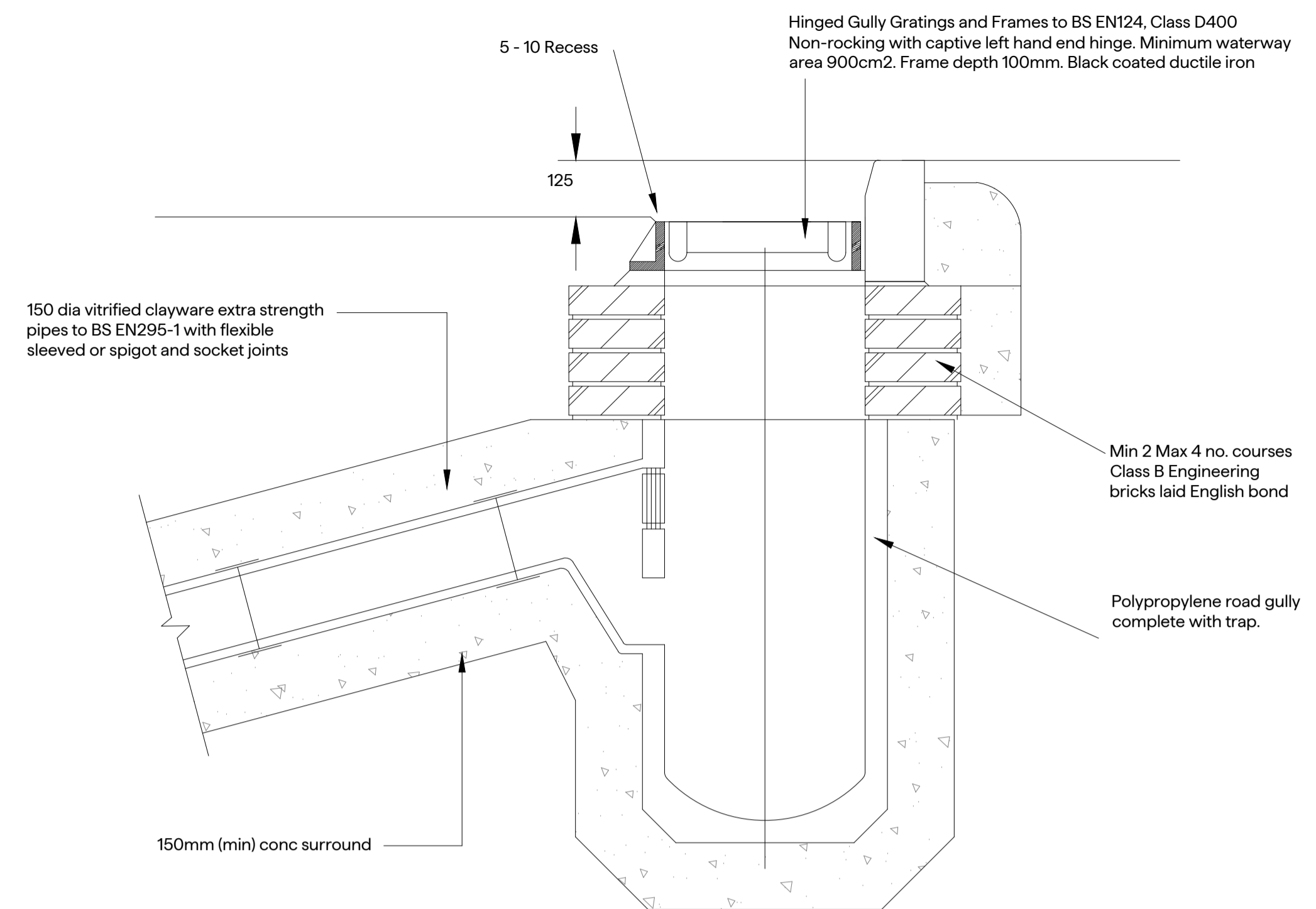
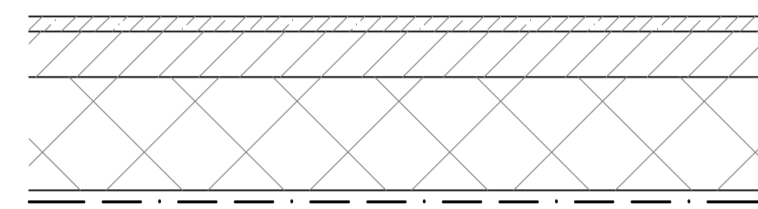
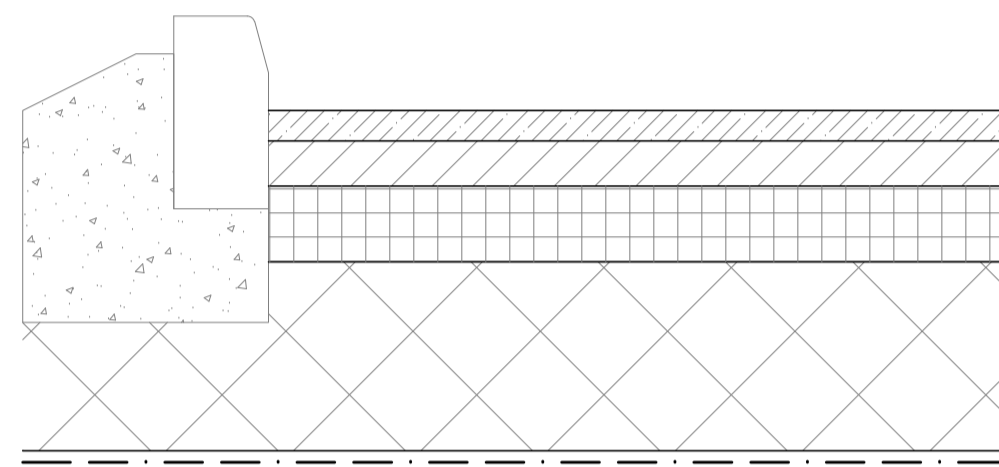
SUB-BASE:
150mm thickness compacted granular material DTp Type 1 in accordance with Specification for Highway Works clause 803.

SEPARATION MEMBRANE:
Terram 1000 Separation membrane.

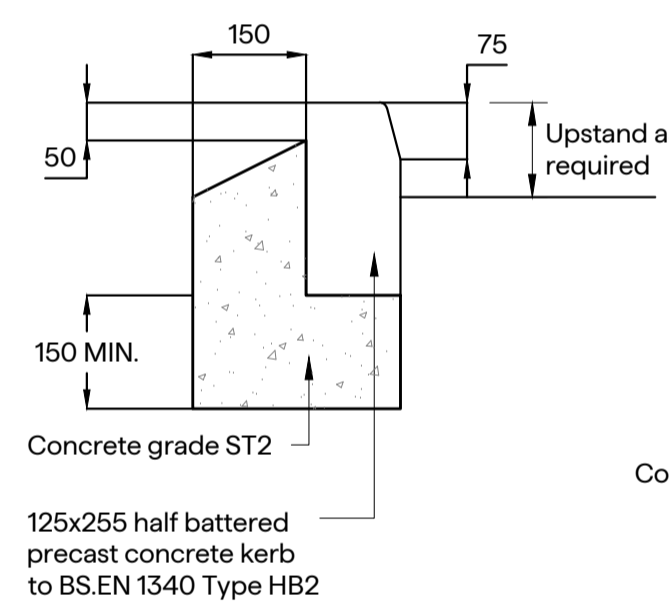
Foundation Layer Thickness Table			
CBR Value (%)	Sub-Base & Capping (mm)	Sub-Base Only (mm)	
< 2	Ground Treatment Required	N/A	
2	150	600	N/A
3	150	350	300
4	150	300	270
5	150	250	220
8 - 14	150	200	175
15+	N/A	N/A	150

Based on CD 225
NOTE: For crushed rock, aggregate to be used. Slag is not permitted as a substitute.

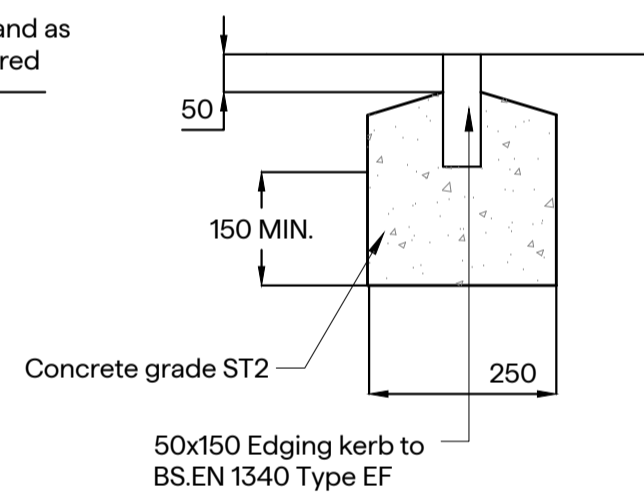
CAPPING:
Compacted granular material DTp Class 6F2 in accordance with the Specification for Highway Works Table 6/1 -refer to table for layer thickness



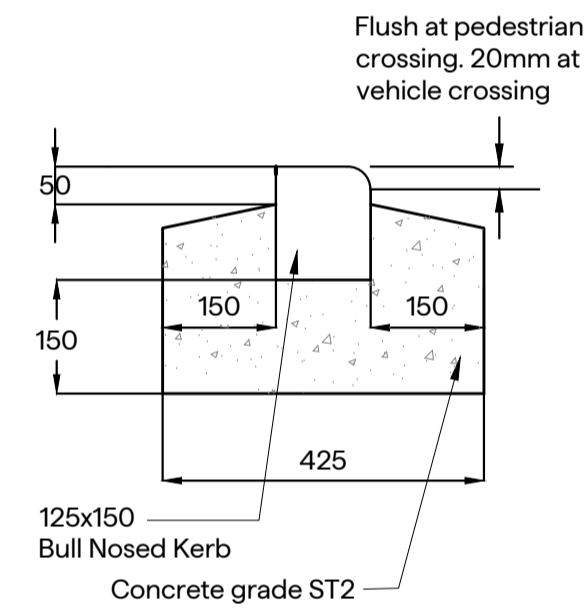
Typical Road Gully Detail



Kerb type HB2



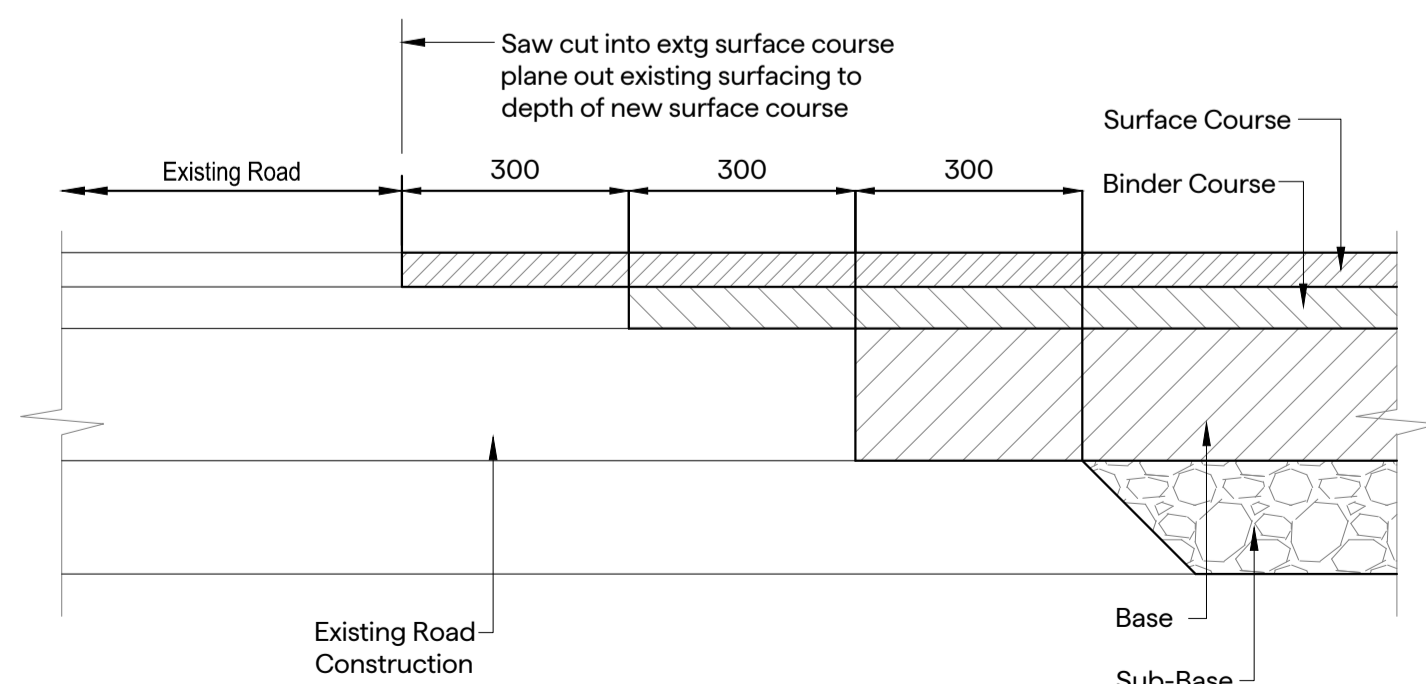
Edge type EF



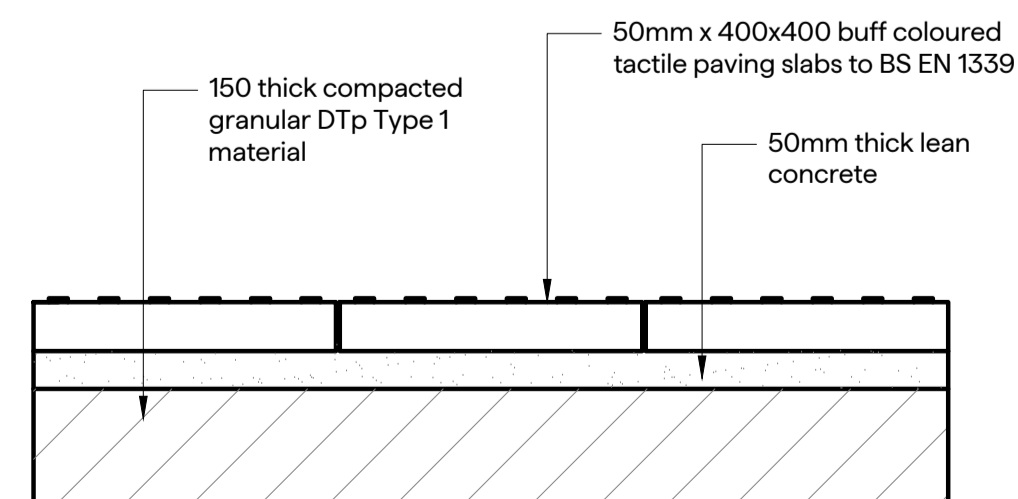
Kerb type BN

Notes:
Vertical faces of extg. bituminous materials to be primed with bitumen.
horizontal or inclined extg. surfaces to accept bituminous materials to be sprayed with bituminous tack coat type K140 to BS.434.

Contractor to confirm to engineers existing road construction thickness before tying in



Tie in between existing and proposed pavement



Tactile Paving Slab Construction Detail

This drawing is the property of SBK. Copyright is reserved by them and this drawing is issued on the condition that it is not copied either wholly or in part without the consent in writing of SBK. This drawing must be read in conjunction with the project specification. Do not scale from this drawing, use figured dimensions only. This drawing was generated using AutoCad.

NOTES

- Works within public highway are subject to a Section 184 Agreement with Local Authority.
- The Contractor is responsible for arranging all necessary road opening and traffic management licenses under the NRSWA.
- If sub-grade material is frost susceptible the full carriageway construction thickness is to be no less than 450mm.
- All re-used fill must comply with Class 1 or 2 Acceptable Earthworks Material, in accordance with table 6/1 of the Specification for Highway Works, and be suitably placed and compacted in accordance with table 6/4.
- Stated Sub-base thicknesses based on a CBR value of 5%. In-situ CBR testing required at prior to construction to confirm CBR value

Rev.	Amendments	Date	By	Chkd.
P01	First Issue	20.06.23	DG	AH



Civil & Structural Consultants
45 Frederick Street, Birmingham, B1 3HN
Email: officeadmin@sbkconsult.com

Drawing Status
PRELIMINARY

**Lime Kiln Cottage
Welshpool**

S184 Details

Drawn by	DG	Checked by	AH	Revision
SBK-23-118-DR-C-552				P01
Date	19.06.2023	Scale	NTS @ A1	