

Protective fencing set up as shown for the demolition and construction phase. When landscaping is installed, as part of the on going arboricultural supervision, this will be maneuvered to maintain the protection of the trees, while allowing the landscaping scheme to be implemented. This will be directed by the supervising arborist. Refer to tree protection method statement.

T16 & T17 selectively reduced back to clear the building by 2m for clearance. Maintaining screening from the street scene perspective.

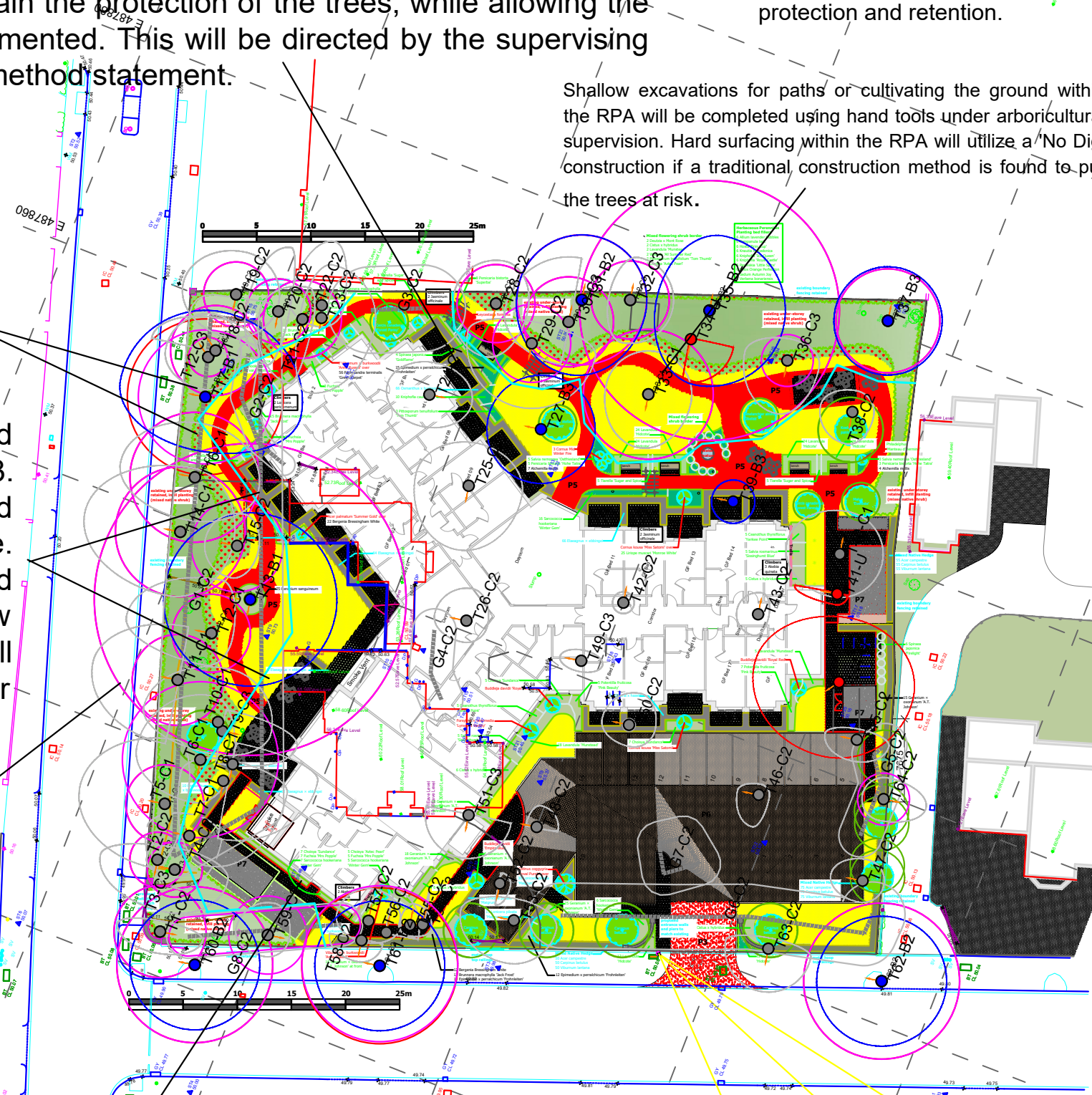
Existing hard surfacing and buildings within the RPA of T13. The home has been designed around retaining this tree. Excavation to remove hard surfacing and dig the new foundations in the RPA will done be carefully, under arboricultural supervision .

G1 is dense under story vegetation that will be selectively thinned on the inner part of the site, but retaining screening on the street side.

Existing hard surfacing and buildings within the RPA of T61. Canopy on eastern side selectively reduced to clear the building line by 2m. Excavation to remove hard surfacing and dig the new foundations in the RPA will be done carefully under arboricultural supervision .

All landscaping to be carefully installed around existing trees, in a manner to ensure their protection and retention.

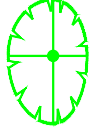






Shallow excavations for paths or cultivating the ground within the RPA will be completed using hand tools under arboricultural supervision. Hard surfacing within the RPA will utilize a 'No Dig' construction if a traditional construction method is found to put the trees at risk.



Trees to be removed to implement the scheme:

- T4, T6, T7, T8, T9, T22, T23, T24, T25, T26, T27, T34, T36,
- T38, T39, T40, T41, T42, T43, T44, T45, T46, T47, T48, T49,
- T50, T51, T52, T53, T54, T56, T57, 58, T63.
- G2, G3, G4, G5, G6, G7

KEY

-  Tree Position with Canopy Spread plus BS5837 Category A1, A2 or A3
-  Tree Position with Canopy Spread plus BS5837 Category B1, B2 or B3
-  Tree Position with Canopy Spread plus BS5837 Category C1, C2 or C3
-  Tree Position with Canopy Spread plus BS5837 Category U
-  Root Protection Area (RPA) - Based on Simple Radius from Tree
-  - First significant Branch direction (FSB)
-  - Protective Fence Line

TREE PROTECTION PLAN

CLIENT: Boutique Care Homes

PROJECT: Lawnfield, West Moreland Road, Maidenhead

DATE: 16th January 2024

SCALE: 1:500 A3



ANDREW DAY
ARBORICULTURALCONSULTANCY LTD
5 BROOK PLACE
HALSTEAD
ESSEX
CO9 1DG

TEL: 0333 242 7344 MOB: 0777 231 7770

EMAIL: andy@andrewdayconsultancy.com