

SITE MATERIALITY



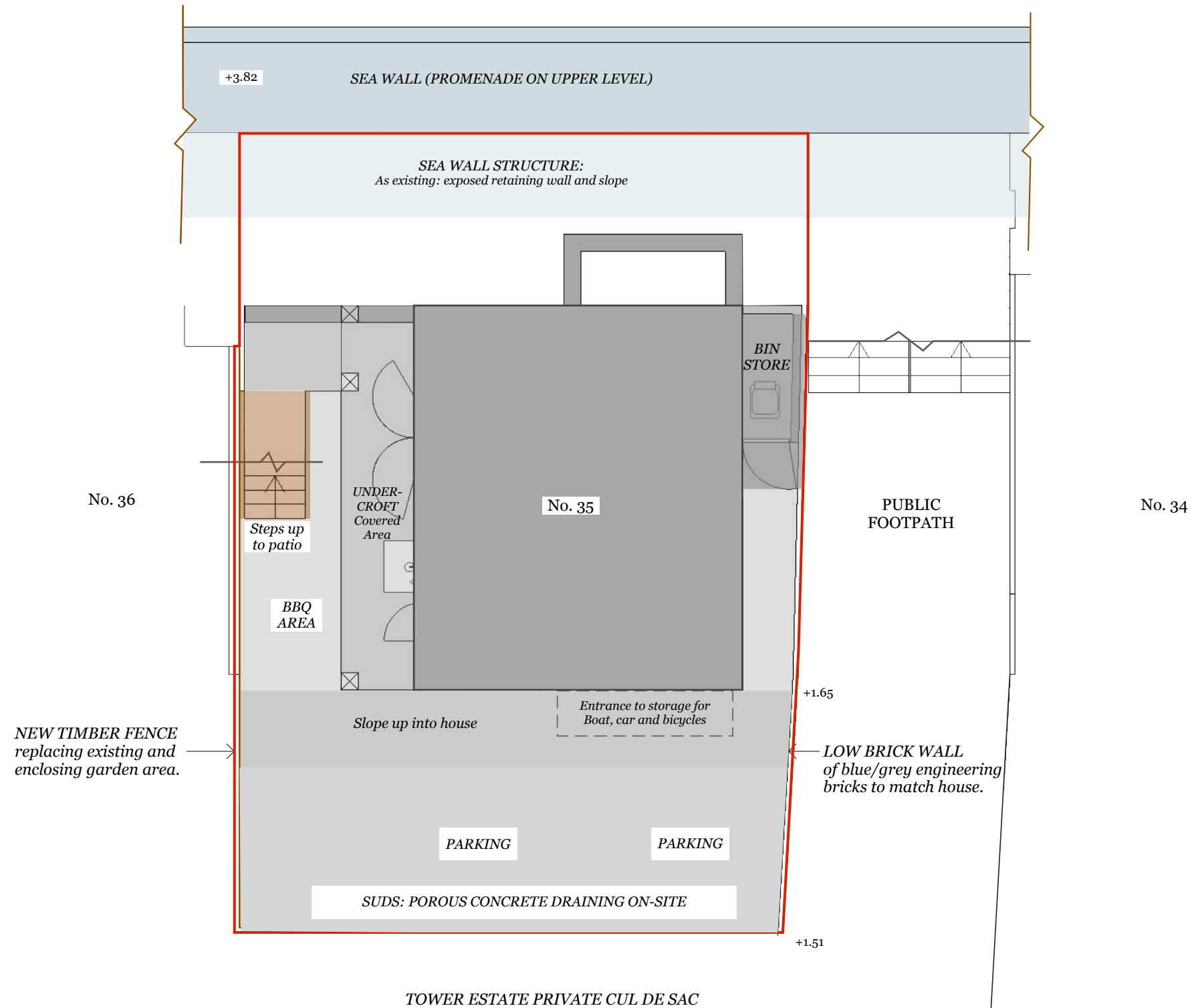
Sustainable porous Concrete
Or similar



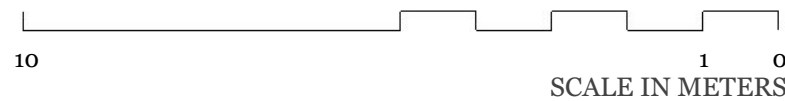
Blue/Grey Engineering bricks



Timber elements



Amendments to Landscaping:
 Removal of grass and fence to be replaced with increased area of SUDS Porous concrete.
 Removal of entrance path (front entrance relocated to rear)



CLIENT
John Finbow

PROJECT
 <35 Tower Estate
 Point Clear
 St Osyth
 CO16 8NG>

DRAWN BY
EK | AK

ISSUE
11 Dec 2023

SCALE
1:100 @ A3

DESCRIPTION
**PROPOSED
 SITE PLAN**