

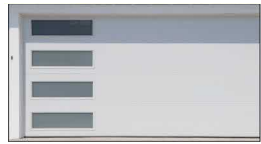
**LG FLOOR MATERIALS**



Blue/Grey Engineering bricks



Timber elements



Contemporary doors

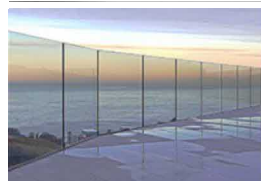
**UG FLOOR MATERIALS**



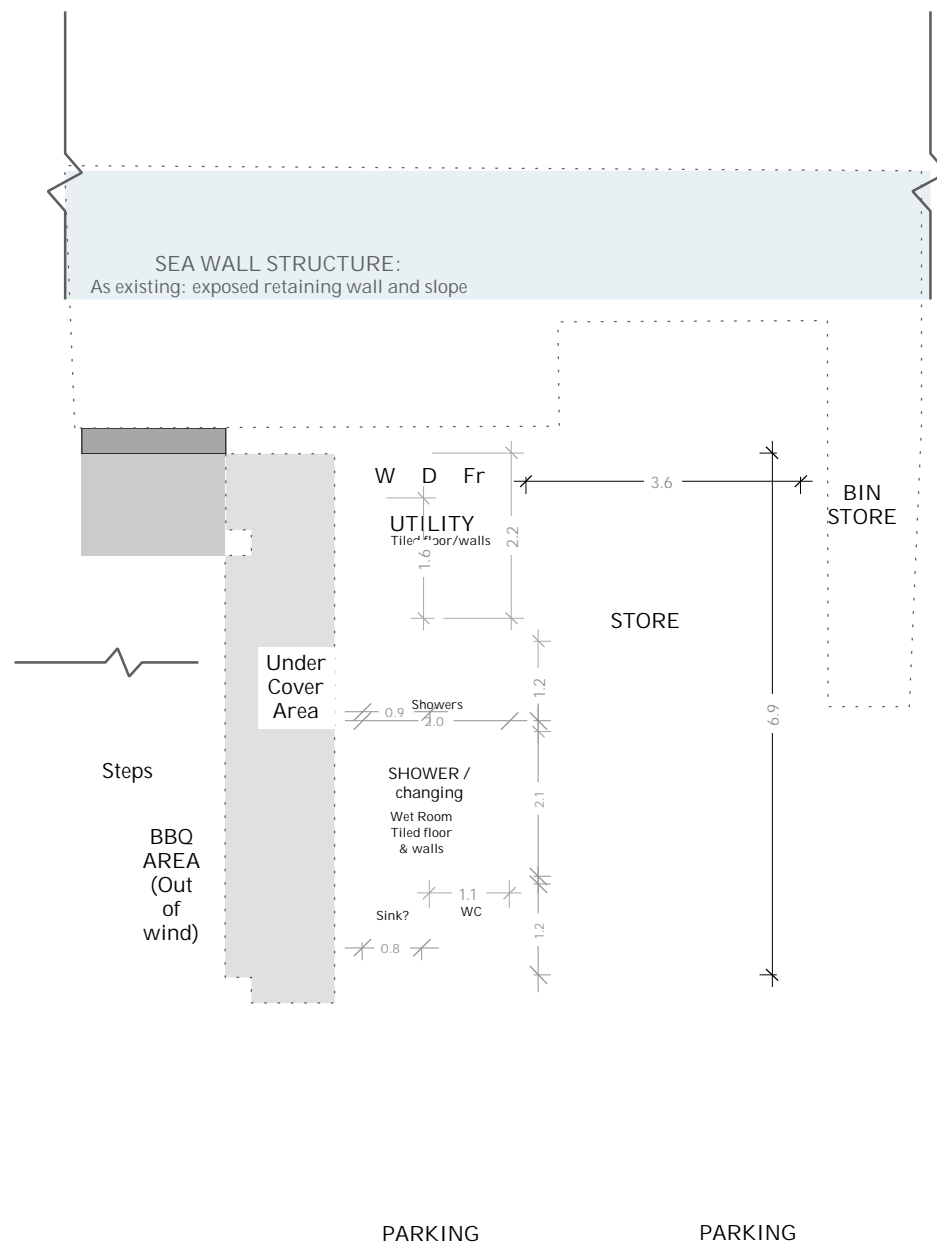
Silver Grey cedar cladding



White windows



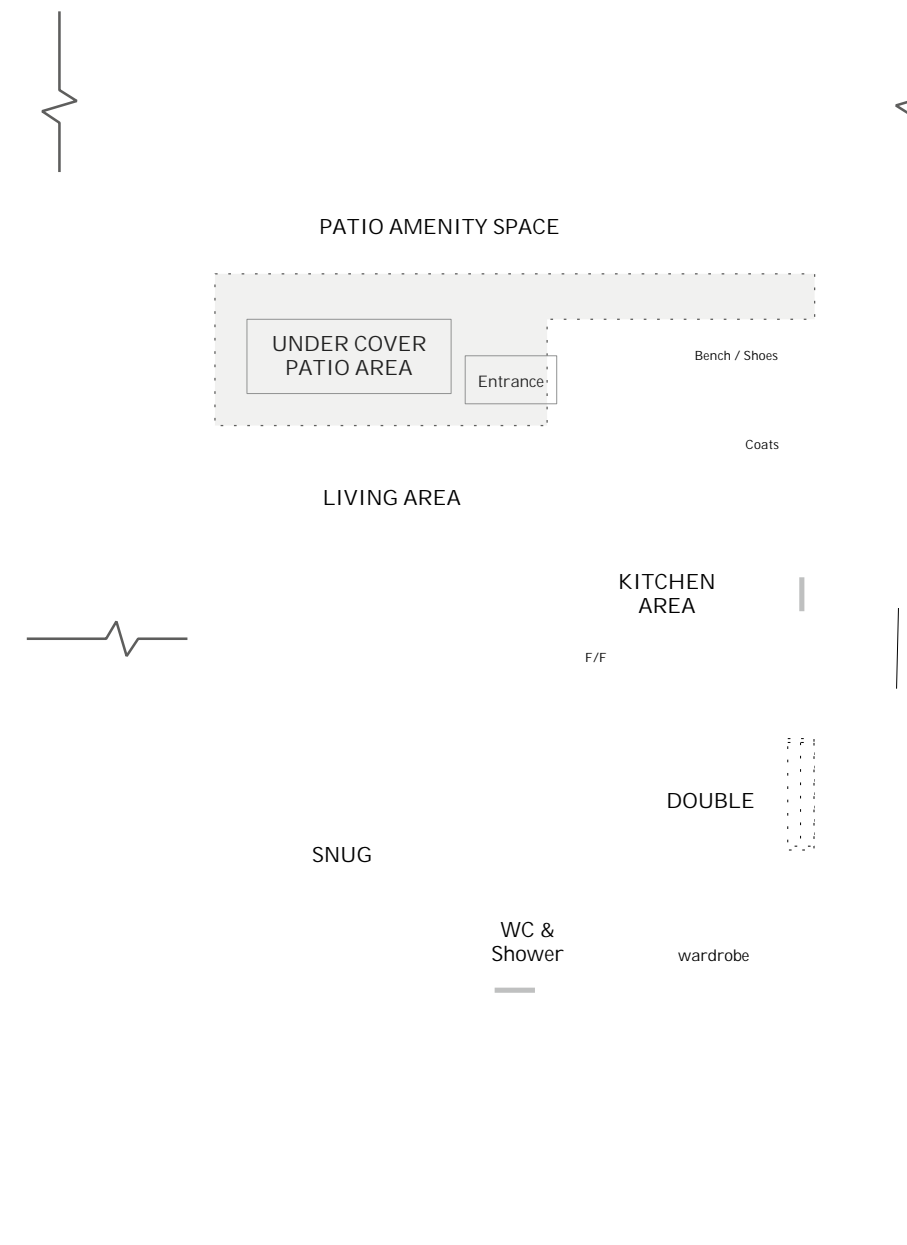
Glass balustrade. Tiled patio



PROPOSED LOWER GROUND FLOOR PLAN

Changes to floor plan layout to create: Accessible boat storage with barn doors

Removed: 'front door' access to hallway and stairs, and internal staircase.  
 Relocated: Utility room, side 'barn door' exchanged for external door  
 Wet room/WC with new external door



PROPOSED UPPER GROUND FLOOR PLAN

Changes to floor plan layout to create: Different room layout

Relocated: Staircase with fireproof enclosure and doors, associated window.  
 'Side' front door access replaced with rear entrance door from patio  
 Changes: Internal wall/room layout and associated window positions.  
 Obscure glazing to bathroom and lower half of kitchen window.

CLIENT  
 <John Finbow>

PROJECT  
 <35 Tower Estate  
 Point Clear  
 St Osyth  
 CO16 8NG>

DRAWN BY  
 EK | AK

ISSUE  
 11 Dec 2023

SCALE  
 1:100 @ A3

DESCRIPTION  
 2023 - PROPOSED  
 AMENDMENTS TO  
 LOWER GROUND AND  
 UPPER FLOOR PLANS