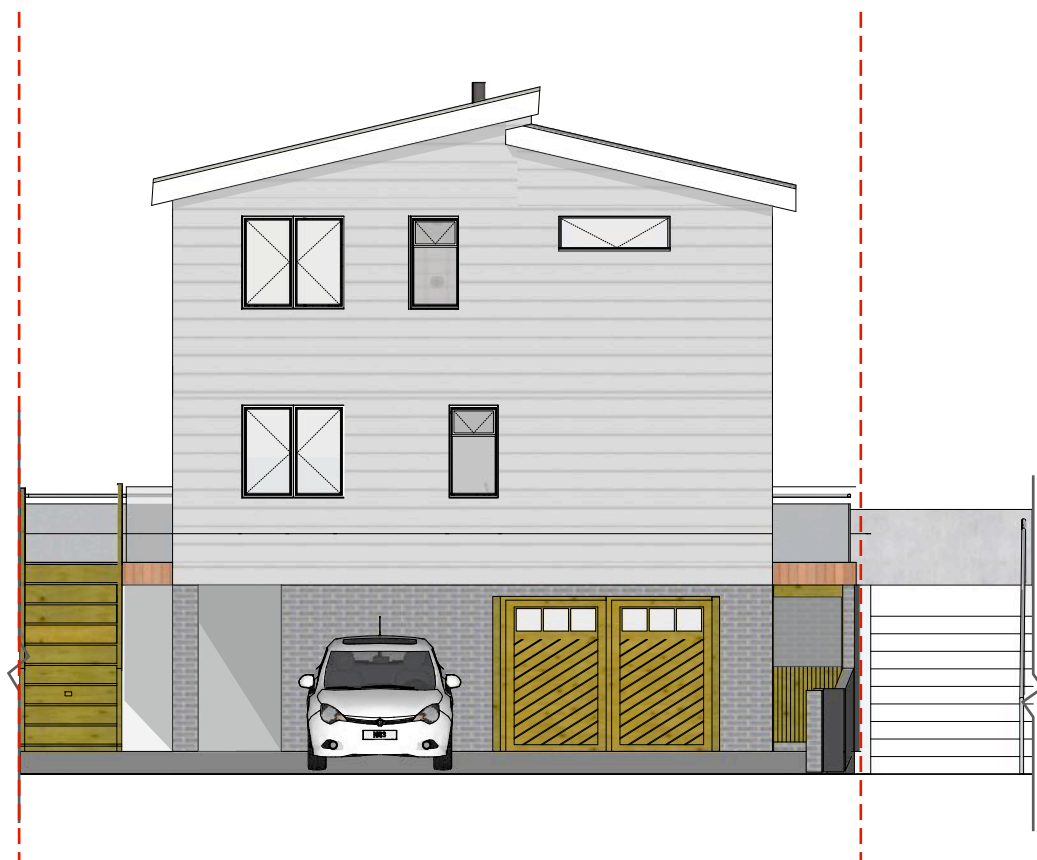
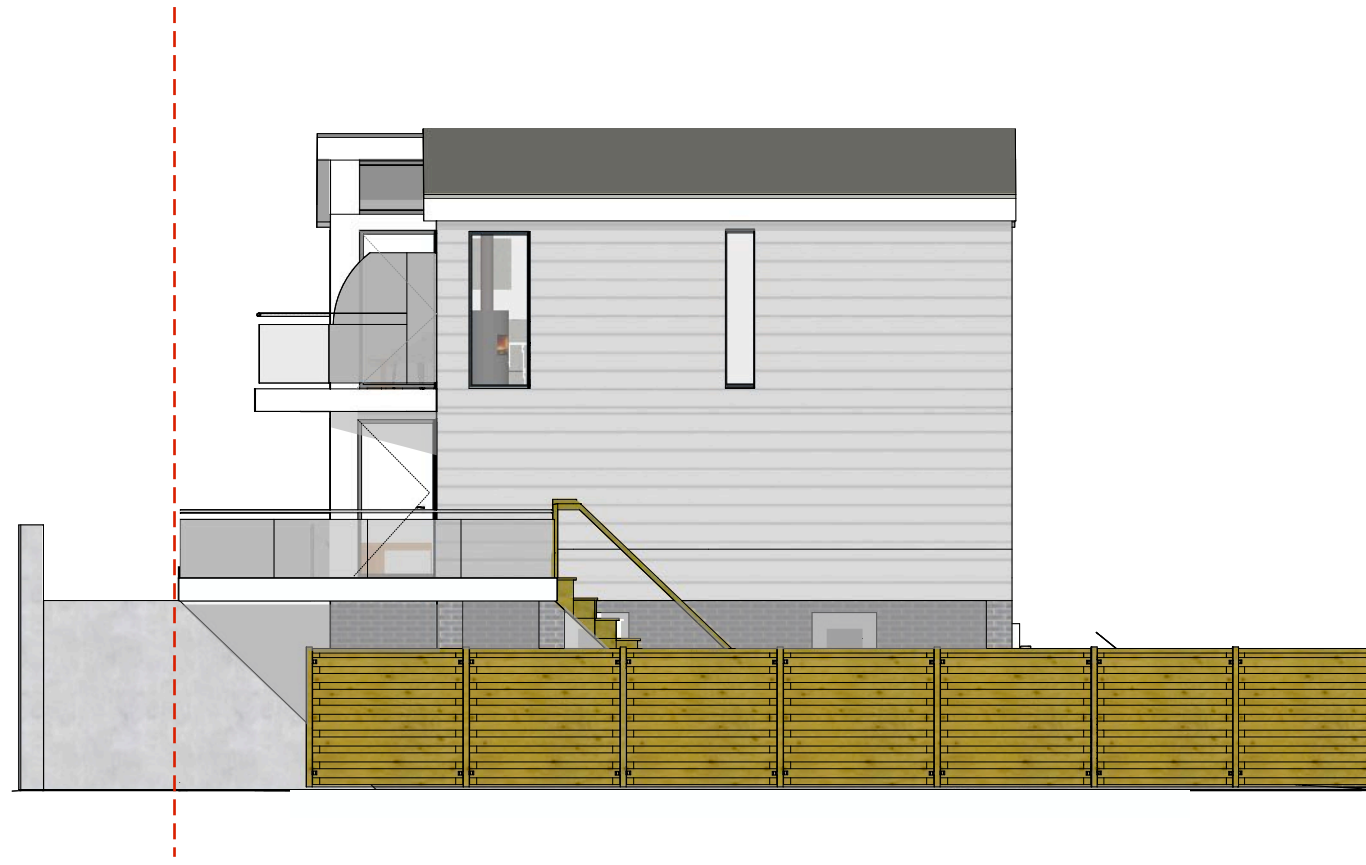


<EK Architectural Design>
<Homestead Lodge
Heath Road
East Bergholt
Suffolk
CO7 6RL>



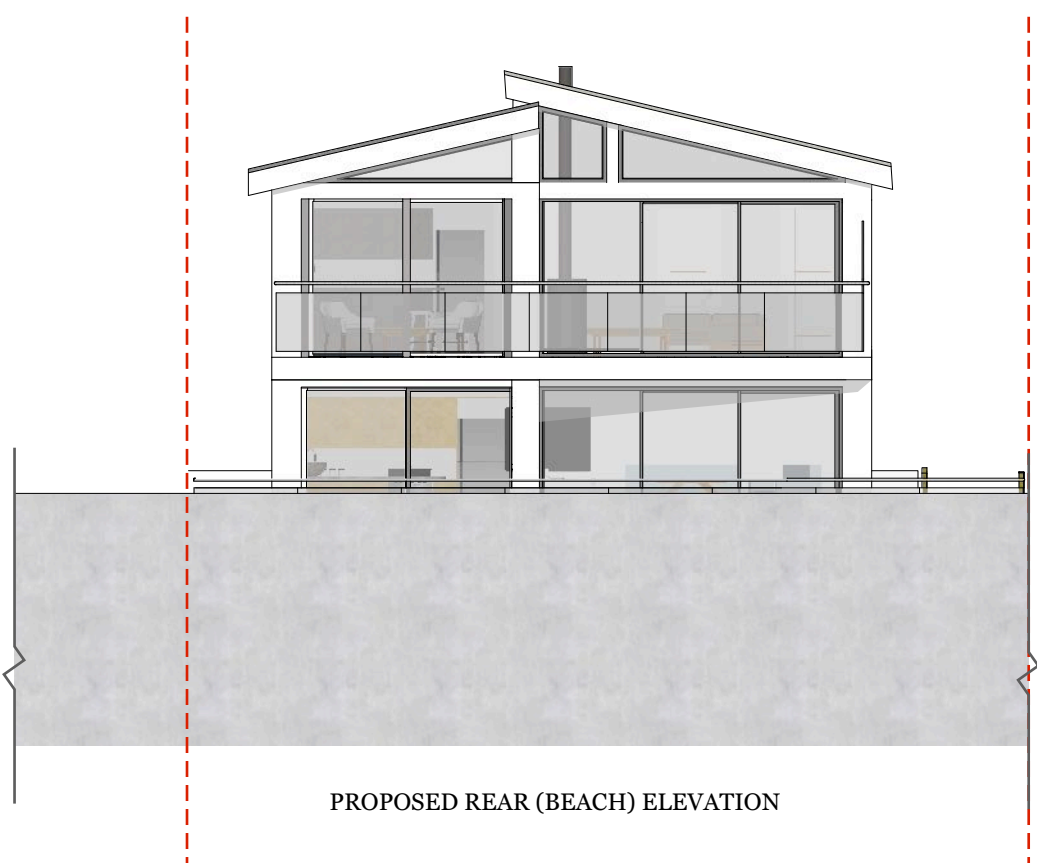
PROPOSED FRONT ROADSIDE ELEVATION

Showing changes to Windows and External doors to suit internal floor plan amendments.
Relocated stair vertical window from rear to SE side. Re-positioning of bathroom obscured windows
Relocated front door from Front to Rear. Relocated Barn Doors from SE side to Front.



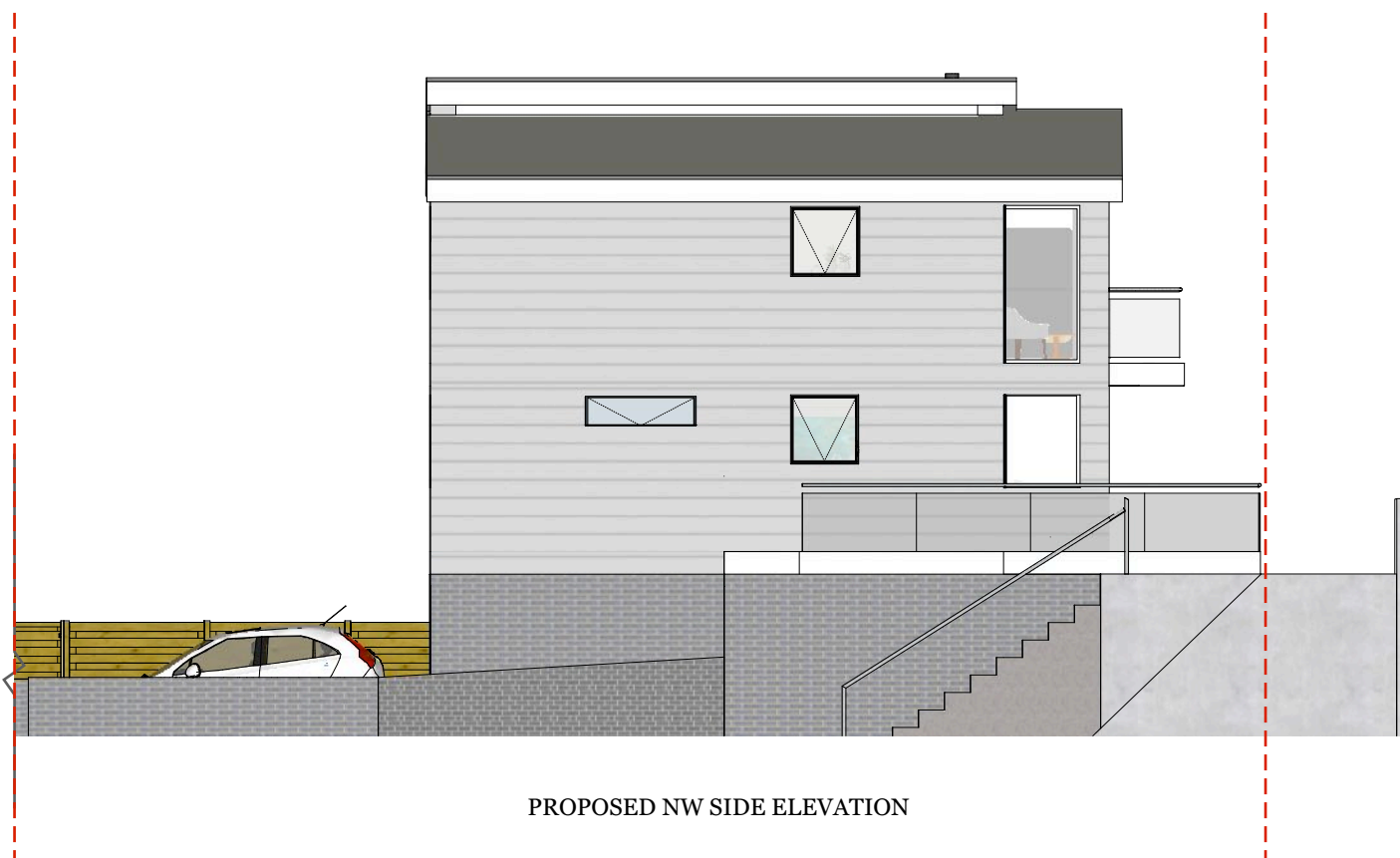
PROPOSED SE SIDE ELEVATION

Showing changes to Window and LGF Door: Relocated stair vertical window from rear to SE side.
Relocated Storage area Barn door from SE side to front, replaced with relocated utility room door.
Relocated wood-burner stove from SE side to Rear middle



PROPOSED REAR (BEACH) ELEVATION

Showing relocation of wood burning stove from SE side to rear middle
Structural strengthening to rear window columns



PROPOSED NW SIDE ELEVATION

Showing relocation of wood burning stove from SE side to rear middle
Removal of hall window UGF & First Floor. Relocation of high bedroom window.
Removal of LGF utility room door relocated to SE side.

1 0
SCALE IN METERS

CLIENT
John Finbow
London

PROJECT
35 Tower Estate
Point Clear
St Osyth
CO16 8NG

DRAWN BY
EK | AK

ISSUE
11 December 2023

SCALE
1:100 @ A3

DESCRIPTION
PROPOSED ELEVATION
AMENDMENTS SHOWING
FRONT & SIDES WINDOW
RE-POSITIONING