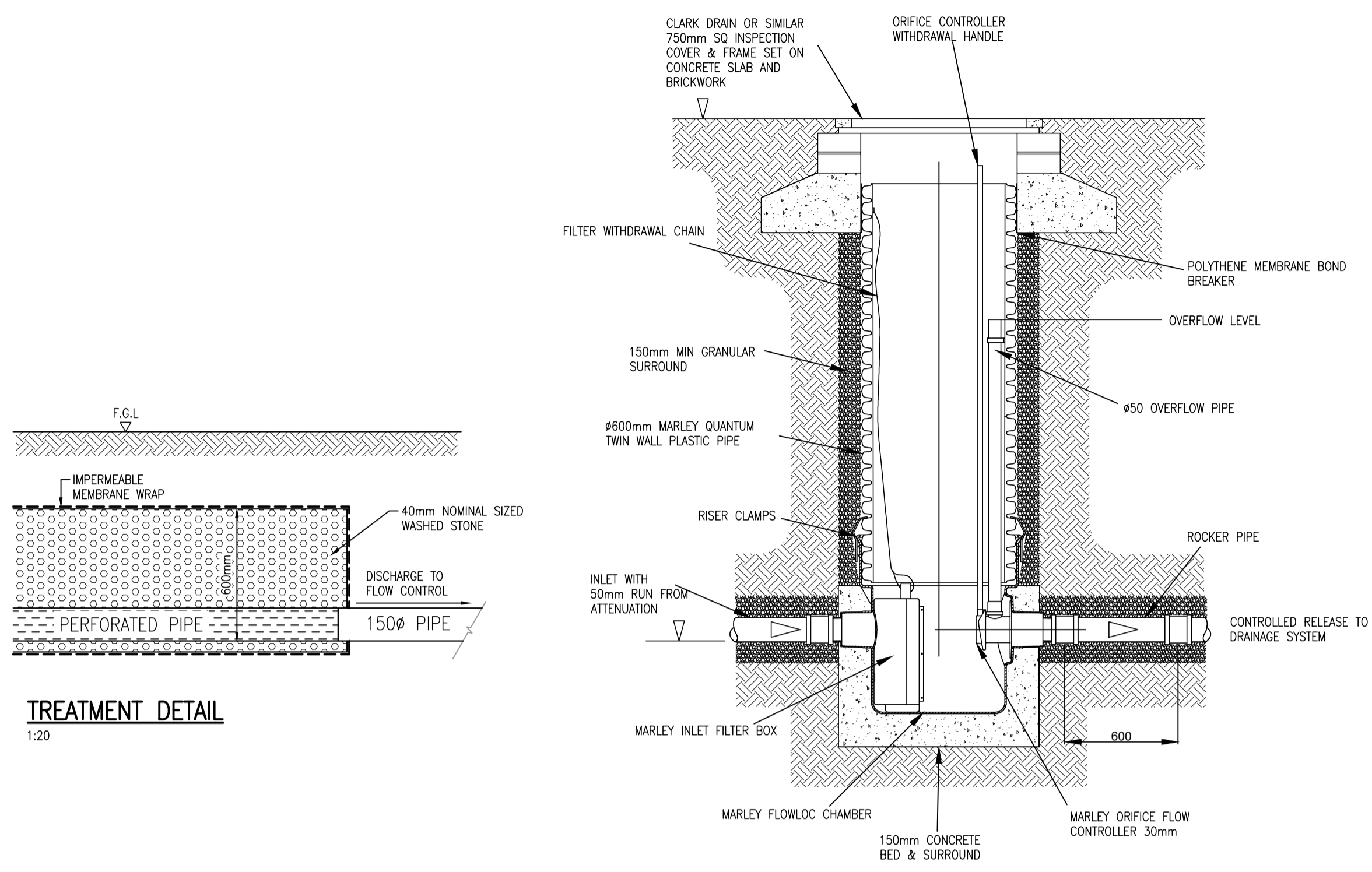
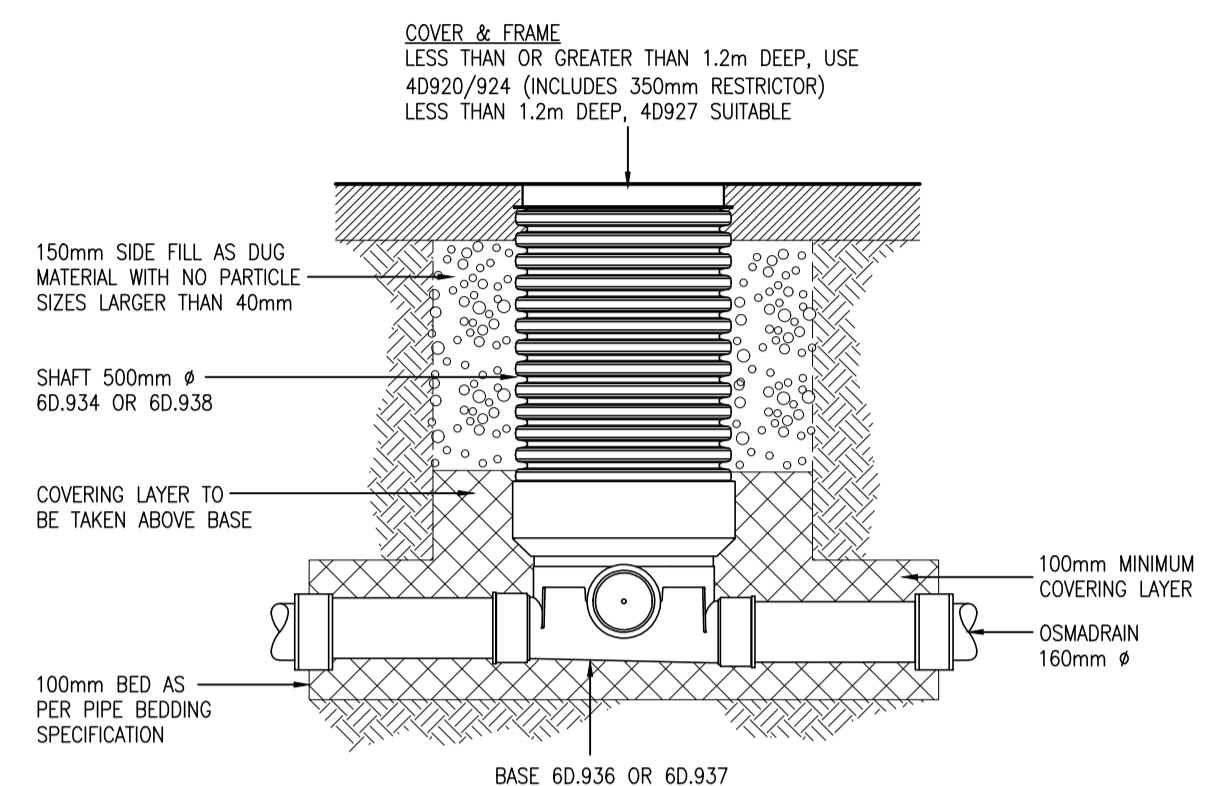


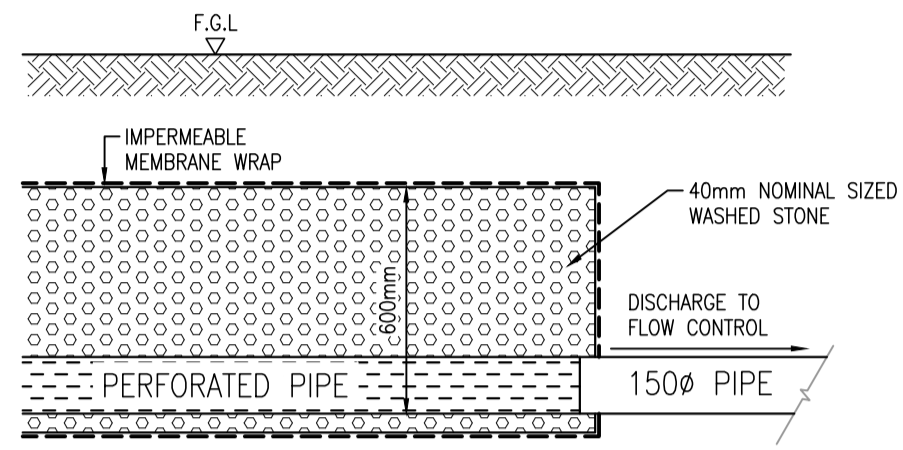
REV.	DATE	BY	DESCRIPTION	APD.
A	28/11/23	ST	ATTENUATION AND BIODISC DETAILS UPDATED	NS



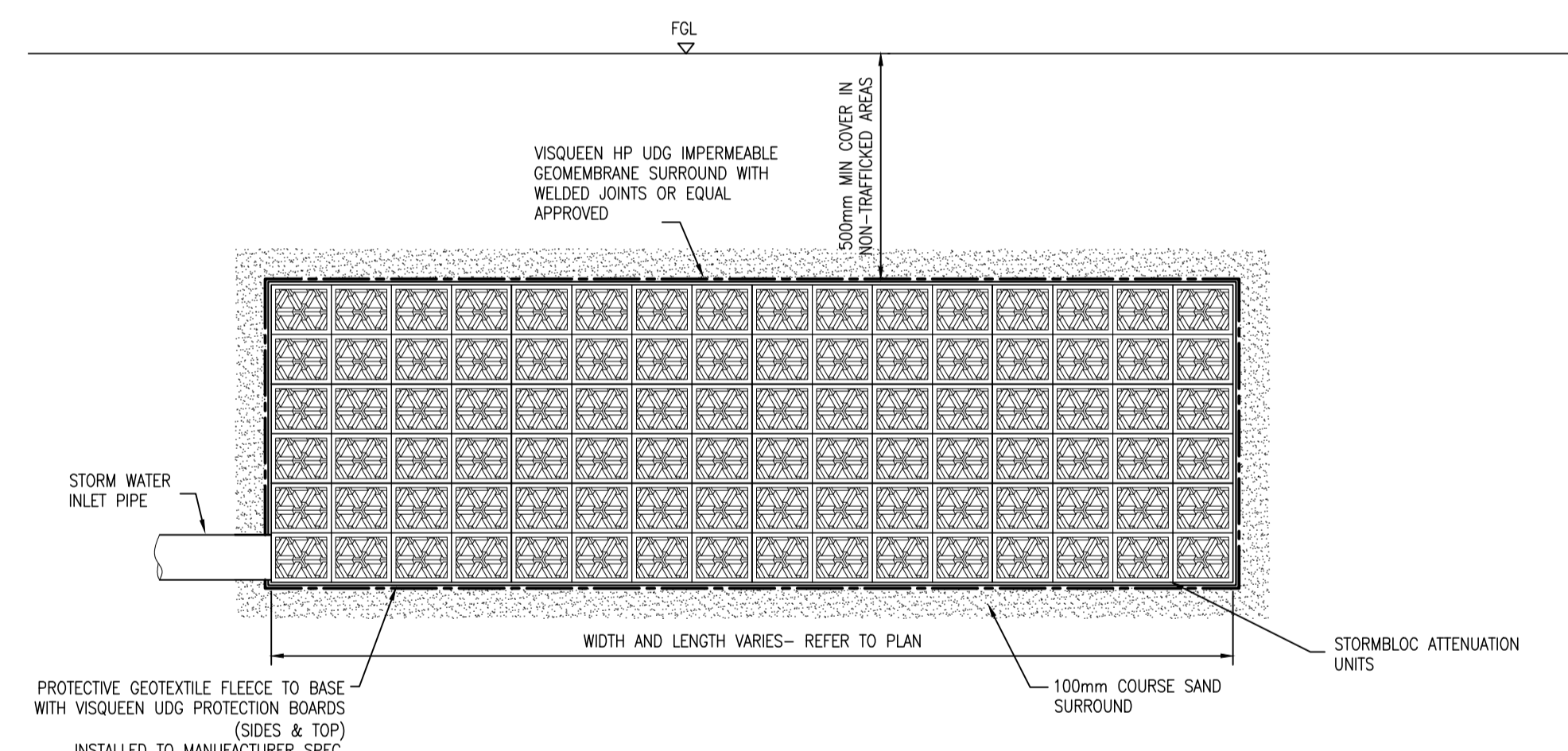
FLOWLOC CONTROL CHAMBER DETAIL
1:20



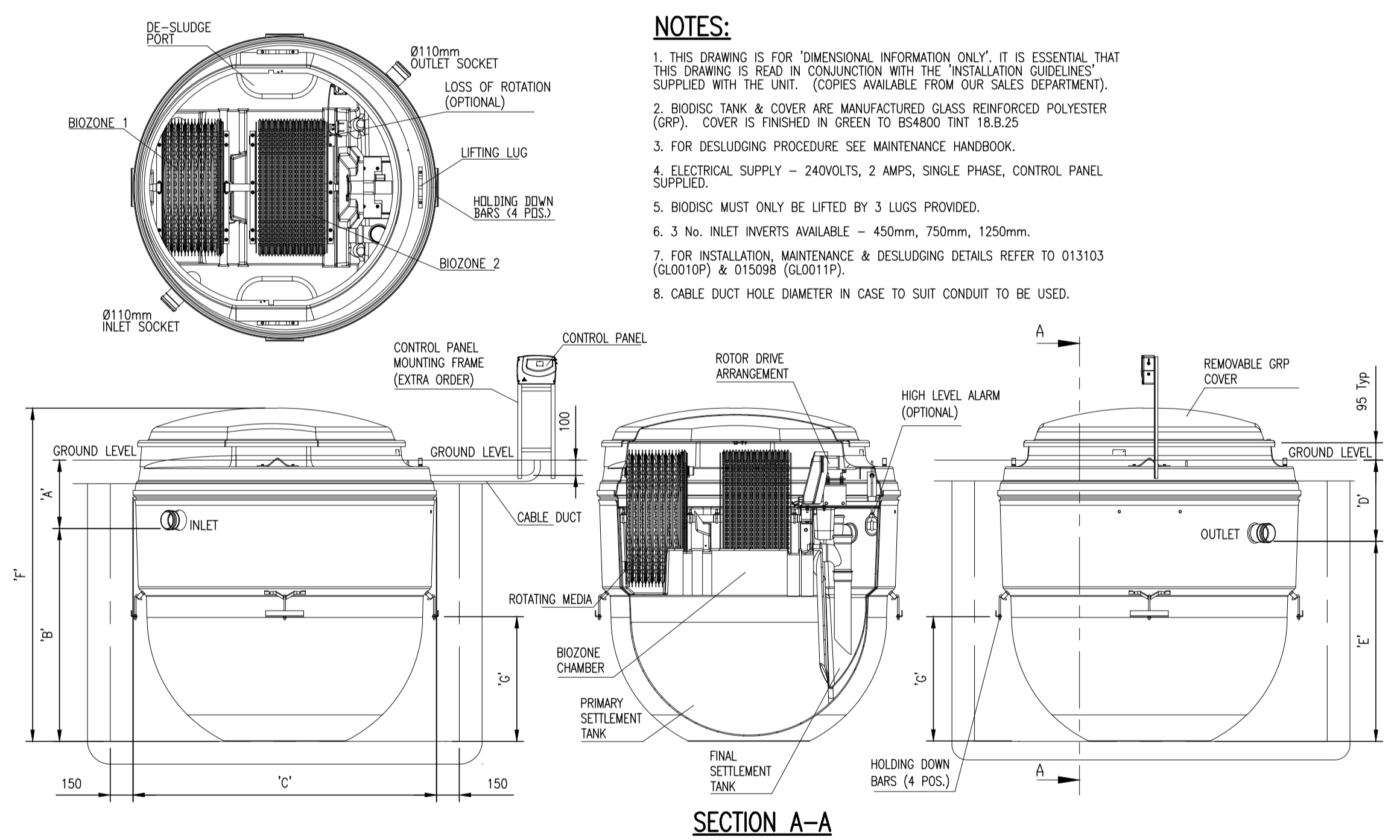
OSMA NON-ENTRY INSPECTION CHAMBER FOR USE IN LANDSCAPED AREAS UP TO 3m DEEP
1:20



TREATMENT DETAIL
1:20



STORMBLOC ATTENUATION DETAIL
1:20



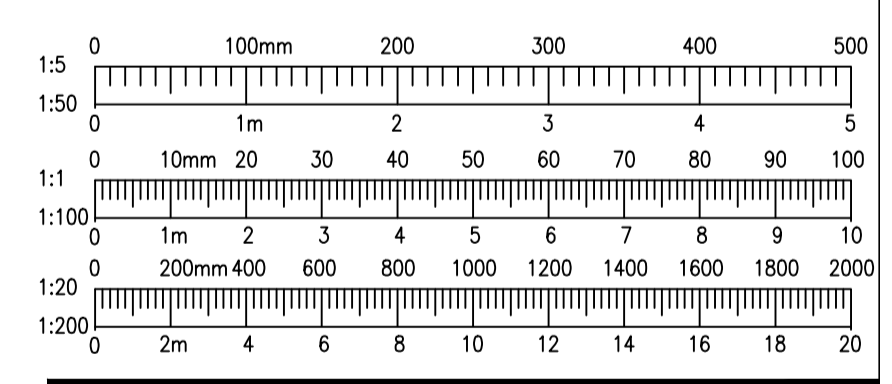
BA GRAVITY BIODISC DIMENSION CHART

DIM 'A'	DIM 'B'	DIM 'C'	DIM 'D'	DIM 'E'	DIM 'F'	DIM 'G'
(mm)	(mm)	(mm)	(mm)	(mm)	(mm)	(mm)
1250	1400	1995	1335	1315	2460	820

- NOTES:**
- THIS DRAWING IS FOR 'DIMENSIONAL INFORMATION ONLY'. IT IS ESSENTIAL THAT THIS DRAWING IS READ IN CONJUNCTION WITH THE 'INSTALLATION GUIDELINES' SUPPLIED WITH THE UNIT. (COPIES AVAILABLE FROM OUR SALES DEPARTMENT).
 - BIODISC TANK & COVER ARE MANUFACTURED GLASS REINFORCED POLYESTER (GRP). COVER IS FINISHED IN GREEN TO BS4800 TINT 18.8.25.
 - FOR DESLUDGING PROCEDURE SEE MAINTENANCE HANDBOOK.
 - ELECTRICAL SUPPLY - 240VOLTS, 2 AMPS, SINGLE PHASE, CONTROL PANEL SUPPLIED.
 - BIODISC MUST ONLY BE LIFTED BY 3 LUGS PROVIDED.
 - 3 No. INLET INVERTS AVAILABLE - 450mm, 750mm, 1250mm.
 - FOR INSTALLATION, MAINTENANCE & DESLUDGING DETAILS REFER TO 013103 (GL0010P) & 015098 (GL0011P).
 - CABLE DUCT HOLE DIAMETER IN CASE TO SUIT CONDUIT TO BE USED.

HEALTH AND SAFETY

THE DESIGN HAS HIGHLIGHTED ONLY COMMON HAZARDS, WHICH HAZARDS ARE CONSIDERED TO BE WITHIN THE NORMAL EXPERIENCE OF A COMPETENT CONTRACTOR.



DRAWING STATUS: **APPROVAL**

MCGREGOR | MCMAHON
CONSULTING ENGINEERS
2 Castle Court • Carnegie Campus • Dunfermline • Fife • KY11 8PB
01383 734905 • mcgregor-mcmahon.com • admin@mcmahon.com

PROJECT: **NEW DELING DEVONSIDE FARM SALINE**

TITLE: **DRAINAGE DETAILS**

SCALE AS SHOWN	DATE 17/11/2023	DRAWN ST	APPROVED NS	A1
----------------	-----------------	----------	-------------	----

DRAWING No. **23805-301** REV. **A**