

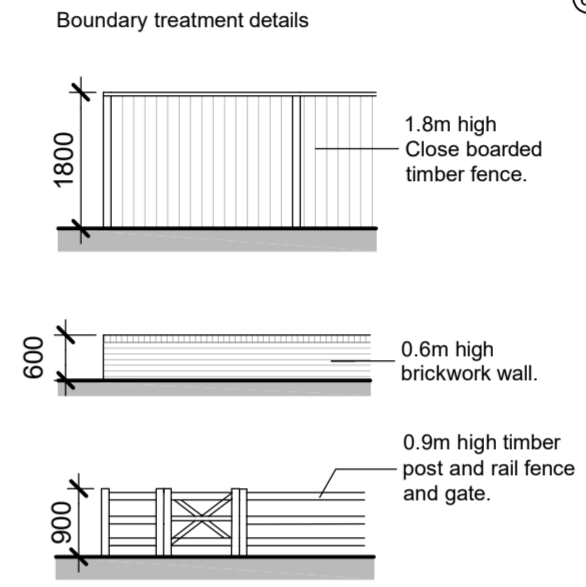
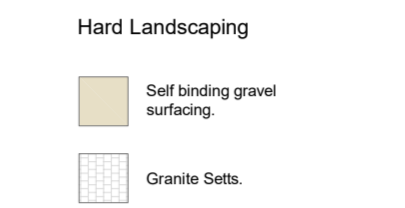
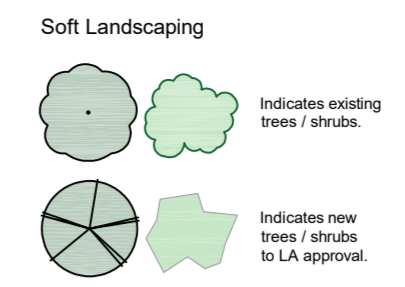
NOTES

GENERAL NOTES:
 1. THIS DRAWING IS TO BE READ IN CONJUNCTION WITH THE OTHER RELEVANT CONSULTANTS DRAWINGS.
 2. ALL FINISHES ARE TO CONFORM TO THE CURRENT BUILDING REGULATIONS.
 3. REFER TO A SEPARATE DOCUMENT FOR THE DESIGNERS RISK ASSESSMENT.
 4. ALL WORKS OR MATERIALS INDICATED ON THIS DRAWING ARE TO BE TO THE LATEST RELEVANT BRITISH STANDARDS AND CARRIED OUT IN ACCORDANCE WITH THE BRITISH STANDARDS CODES OF PRACTICE OR RECOGNIZED INSTITUTE OR TRADE ASSOCIATION RECOMMENDATIONS AND PUBLICATIONS.

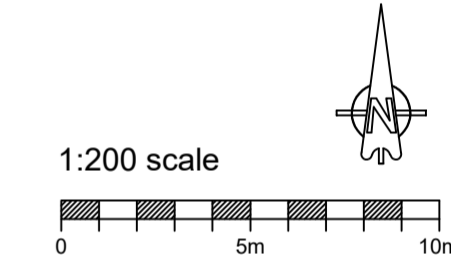
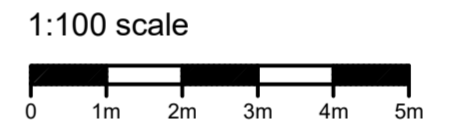
PROPOSED SITE PLAN

SCHEDULE OF ACCOMMODATION

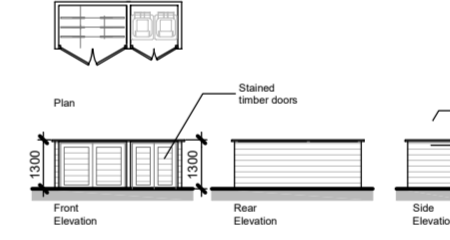
- ① EXISTING / REFURBISHED - 4B @ 152 sqm - Garden 596 sqm
- ② PROPOSED BUILDING - 3B @ 102 sqm - Garden 190 sqm
- ③ PROPOSED BUILDING - 3B @ 126 sqm - Garden 158 sqm
- ④ PROPOSED BUILDING - 3B @ 103 sqm - Garden 186 sqm
- ⑤ EXISTING / REFURBISHED - 3B @ 75 sqm - Garden 171 sqm
- ⑥ EXISTING / REFURBISHED - 3B @ 100 sqm - Garden 102 sqm



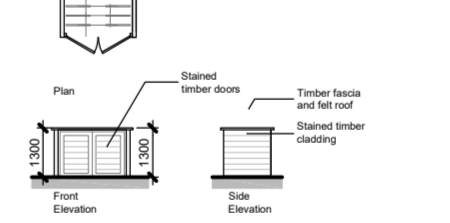
PROPOSED BOUNDARY TREATMENT DETAILS
SCALE 1:100 @ A2



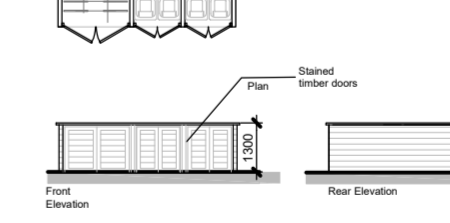
Bin Store/Cycle Store for Unit 6 - Detail



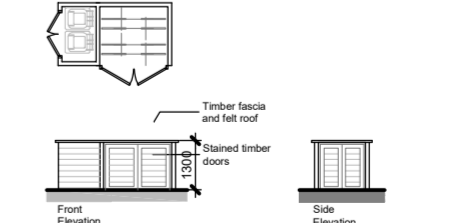
Cycle Store for Unit 4 - Detail



Bin Store/Cycle Store for Unit 3 and 4 - Detail



Bin Store/Cycle Store for Unit 1 - Detail



PROPOSED BIN/BIKE STORE
SCALE 1:200 @ A2

PROPOSED SITE PLAN
SCALE 1:200 @ A2

Revision	Date	Description	Drawn	Checked
P10	Jan 2024	Minor amendments to boundary treatment.	JB	
P9	Jan 2024	Minor amendments to parking layout.	JB	
P8	Jan 2024	Minor amendments.	JB	
P7	Dec 2023	Minor amendments.	JB	
P6	Dec 2023	Minor amendments.	JB	
P5	Dec 2023	Minor amendments.	JB	
P4	Nov 2023	Amendments to boundary.	JB	
P3	Nov 2023	Amendments to landscape and plots.	JB	

PLC ARCHITECTS

Lansdowne House
 25-26 Hampshire Terrace
 Portsmouth PO1 2QF
 Hampshire England

Tel: (023) 92 755 333
 E-Mail: admin@plcarchitects.com
 Web: www.plcarchitects.com

Client:

Project:
 Old Farmhouse,
 Fordingbridge,
 SP6 1LX

Drawing Title:
 Proposed Site Plan

Drawn By	Date	Checked By	Date	Approved By	Date
AC	Nov '23				

Drawing No: 23.3484.100 | Revision: P10 | Scale: 1:200 @ A2