

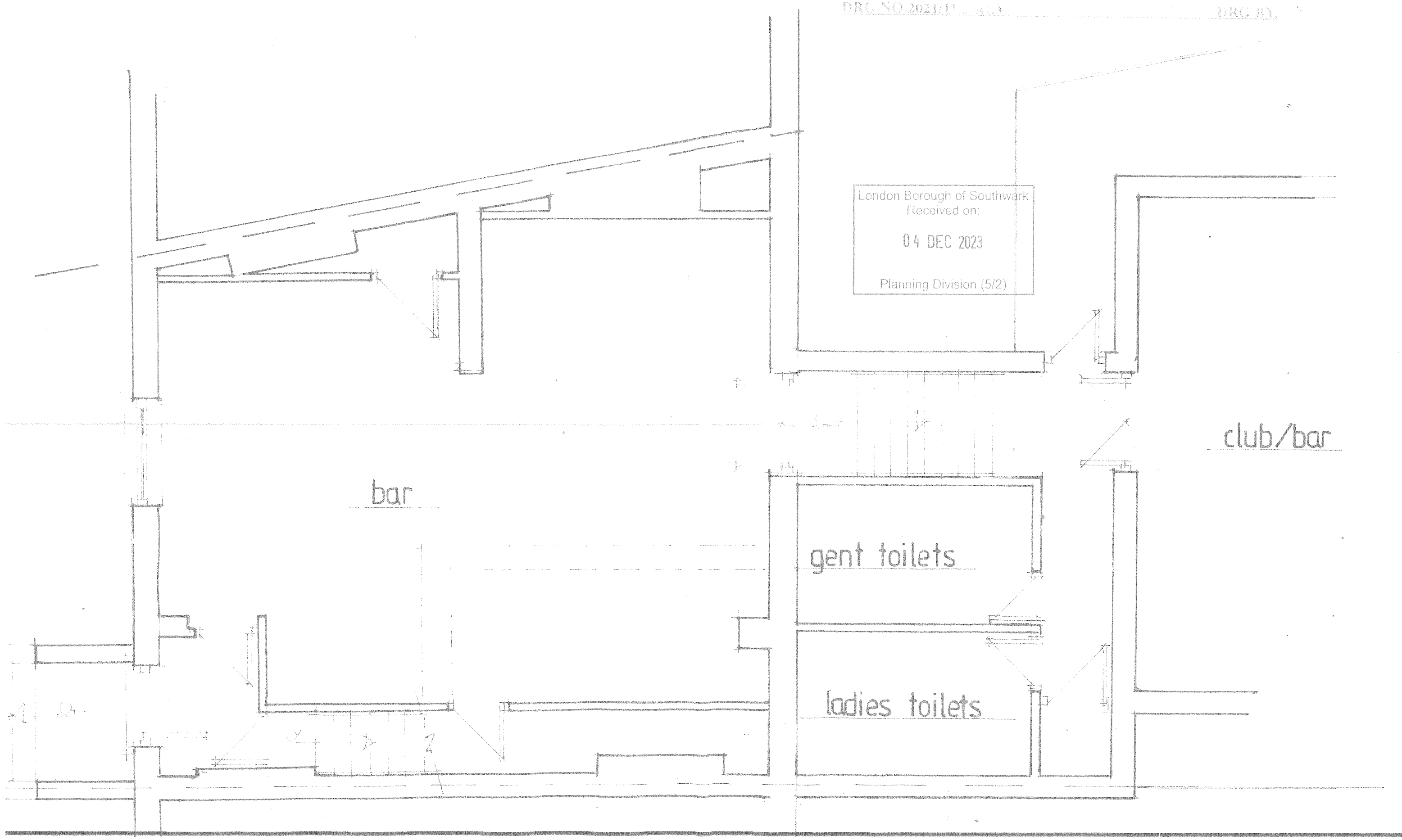
PROPOSED CONVERSION 188 QUEENS ROAD, LONDON SE15 2HP

SCALE 1:50 @ A3

EXISTING GROUND FLOOR

DRG NO 2021/P 3049

DRG BY



London Borough of Southwark  
Received on:  
04 DEC 2023  
Planning Division (5/2)

bar

club/bar

gent toilets

ladies toilets