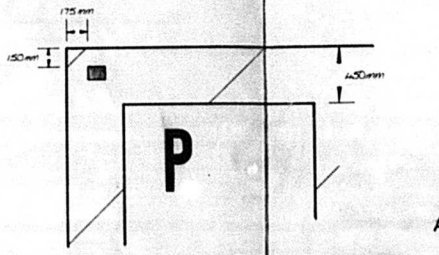
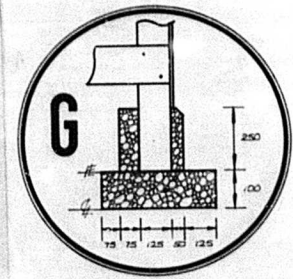


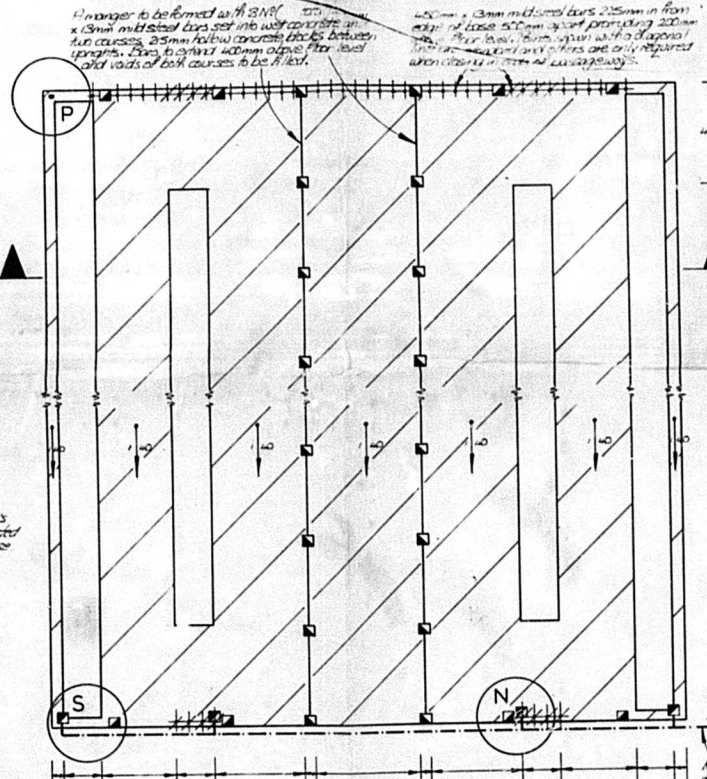
CROSS SECTION AA (SCALE 1:50)

RECEIVED	26 MAY 1977
DATE	R/j/c/124
PLANNING PERMISSION	
ARCHITECTURAL PERMISSION	
APPROVE	[Signature]
DICAF/PROVE	

KUSHFLE BROUGH COUNCIL	
DEPOSITED DOCUMENTS	
BUILDING REGULATIONS 1977	
APPROVED TEAM	
BY CONTRACT:	
BUILDING CONTROL	
BY SUBMITTER TO LOCAL AUTHORITY	

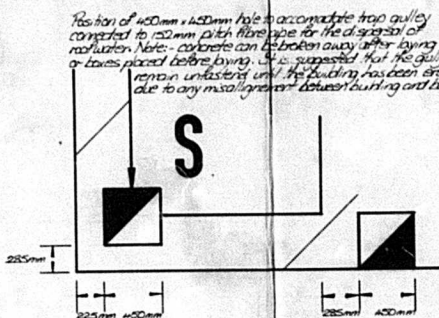


Position of first tunnel rear upright. Tie end beams are positioned 31.225m and 0.110m from beams are @ 1.200m. Ensure tie base measurements of tie point are correct before the commencement of erection.



Beams to be formed with 30mm x 13mm multibed top set with concrete and 40mm courses. 25mm hollow concrete blocks between uprights. Care to ensure 40mm above floor level and voids of both courses to be filled.

450mm x 13mm multibed bars 225mm in from edge of base 500mm apart providing 200mm clear. Bars laid down with diagonal hatching. Bars and others are only required when closing in of carriage ways.



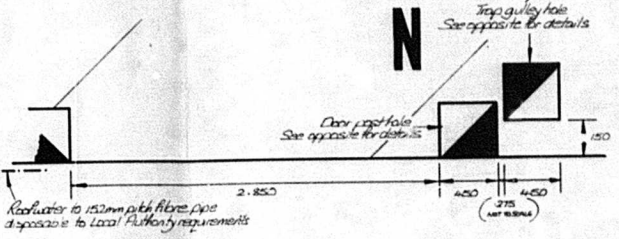
Position of 450mm x 450mm hole to accommodate trap gully connected to 150mm pitch fibre pipe for the disposal of roof water. Note: concrete can be broken away after laying or bars placed before laying. It is suggested that the gully's remain unfastened until the building has been erected due to any misalignment between sinking and base.

Position of 450mm x 450mm x 1.25m hole to accommodate 75mm x 150mm channel for hanging sheeted doors. Channel positioned 900mm below floor level on 225mm, 4:2:1 concrete foundation (Only required with a sheeted door)

Foundations: of 4:2:1 concrete to main 150mm x 150mm uprights 450mm x 450mm x 225mm slabs set 150mm below floor level. To beams, 250mm x 250mm and 150mm which are formed around the base of the tunnel upright after the erection of the building and not beforehand. As soon as the concrete has been poured into the 250mm shuttering for the beams it is suggested that it is well consolidated with a vibrating plate.

Base access: a minimum of 100mm of 4:2:1 concrete on up to 150mm consolidated approved hardcore where required.

Notes: It is of the utmost importance that essential and adequate steps are taken to prevent the settlement of any foundations or base work.



Trap gully hole See opposite for details

Door frame hole See opposite for details

Roofwater to 150mm pitch fibre pipe disposal to local Authority requirements

DIAGONAL LENGTH
NO BAYS PER RUN

FARMPLAN
BRAMPTON ABBOTTS
ROSS-ON-WYE
HEREFORDSHIRE
TEL:- ROSS-ON-WYE 4321 (3 lines)

FOUNDATION PLAN FOR AN ELITE SINGLE BANK HOUSE & FEED UNIT

DO NOT SCALE IF IN DOUBT ASK

Plans prepared for:-

Faulstich

Scale	1:100
Date	3.6.76

Reference
138/58/47FP