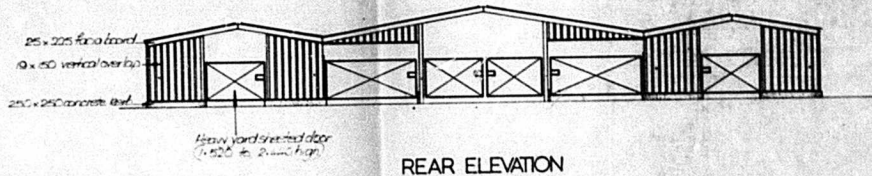
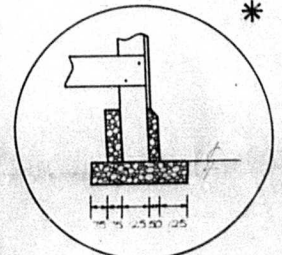
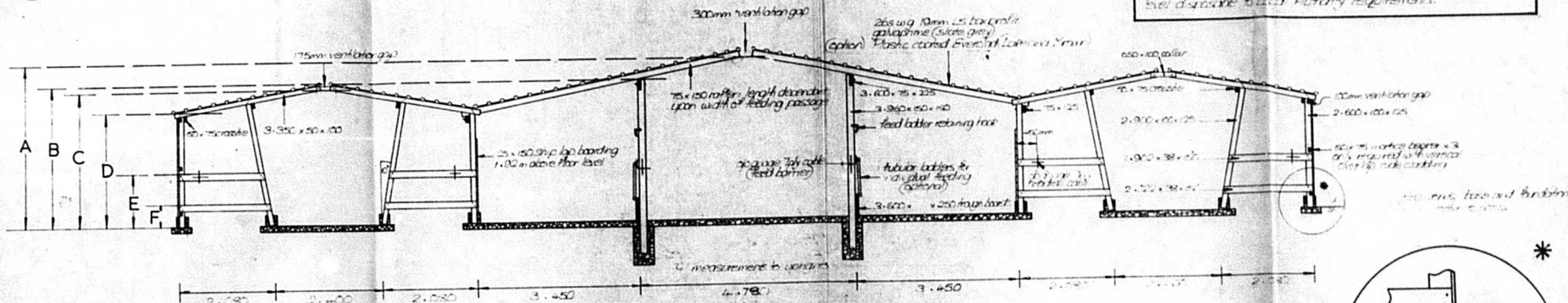


- A 3.400 clearance to ridge in 4.180 passage
- B 3.070 height to top of 150x150 upright
- C 3.060 clearance to ridge in dunging passage
- D 2.600 to eaves or batten
- E 1.220 to top of 100 barrel rail
- F 0.550 to top of bottom barrel rail

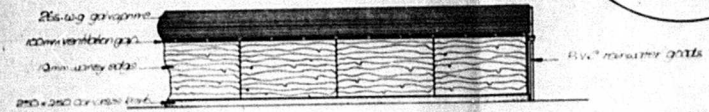
All timber is treated with *Ceburol A* wood preservative by vacuum pressure impregnation to an average net dry salt retention of 5-3 kgs per cu metre in accordance with B.S. 4072.

NOTES

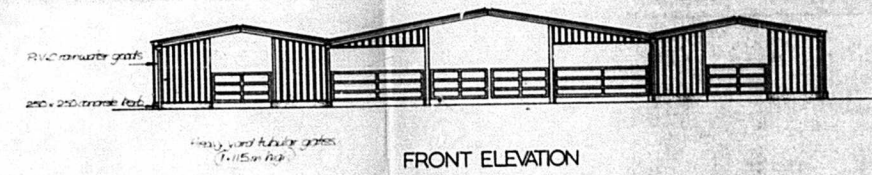
Foundations of 1:2:1 concrete to feed area uprights 400 x 400 x 225 mm blocks set 150mm below floor level to batten 200x250 mm to feet. Base a minimum of 100mm of 4:2:1 concrete or up to 150mm of 20:25:30 graded approved hardcore where required. Gap clad in 26s w/g 10mm profile sheathing: ends lapped 300mm and sealed with mastic paint (grade 033) (min diameter). Minimum 50mm over to all of building. Drainage from rafters to PVC gutters and downpipes to ground level discharge to local authority requirements.



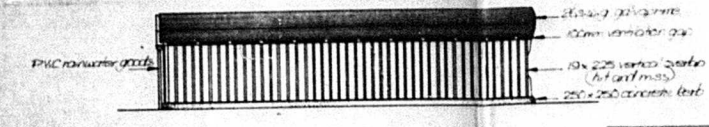
REAR ELEVATION



PART SIDE ELEVATION (WANNEY EDGE)



FRONT ELEVATION



PART SIDE ELEVATION (VERTICAL OVERLAP)

Chickens and turkeys in doors clipped in block to lower part of down pipe (if fitted). Screen in doors in case of dust.

RUSHLIFE BROUGH FOUNCE	
DESIGNED BY	DATE
PLANNED BY	7/11/24
REVIEWED BY	26 MAY 1977
APPROVED BY	
DISAPPROVE	