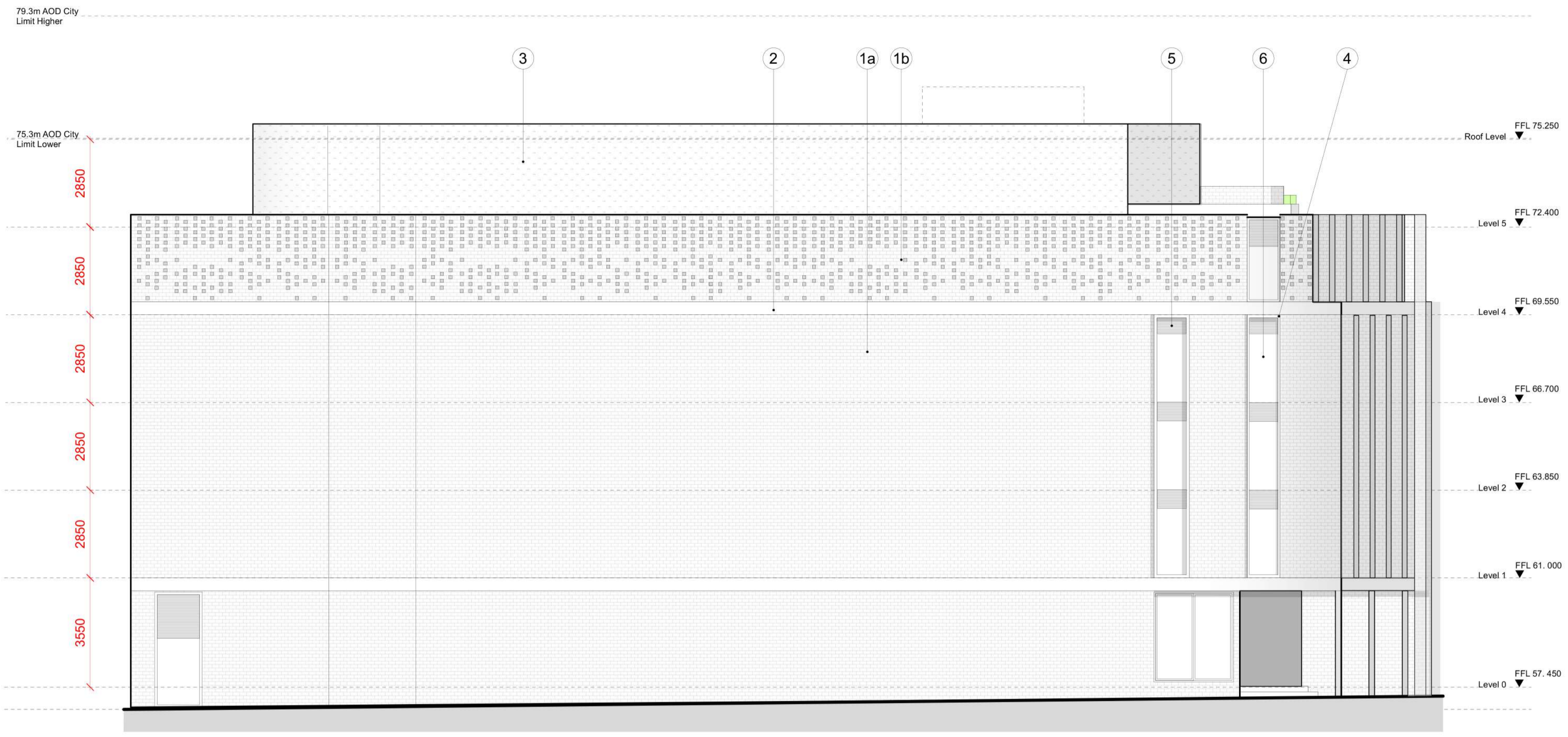
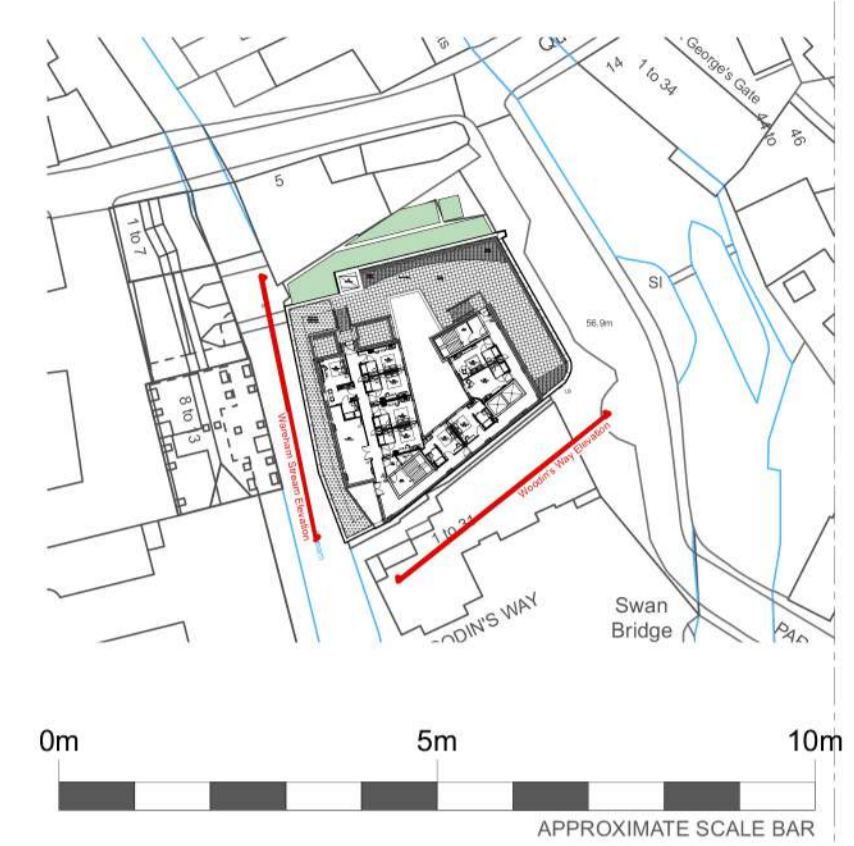


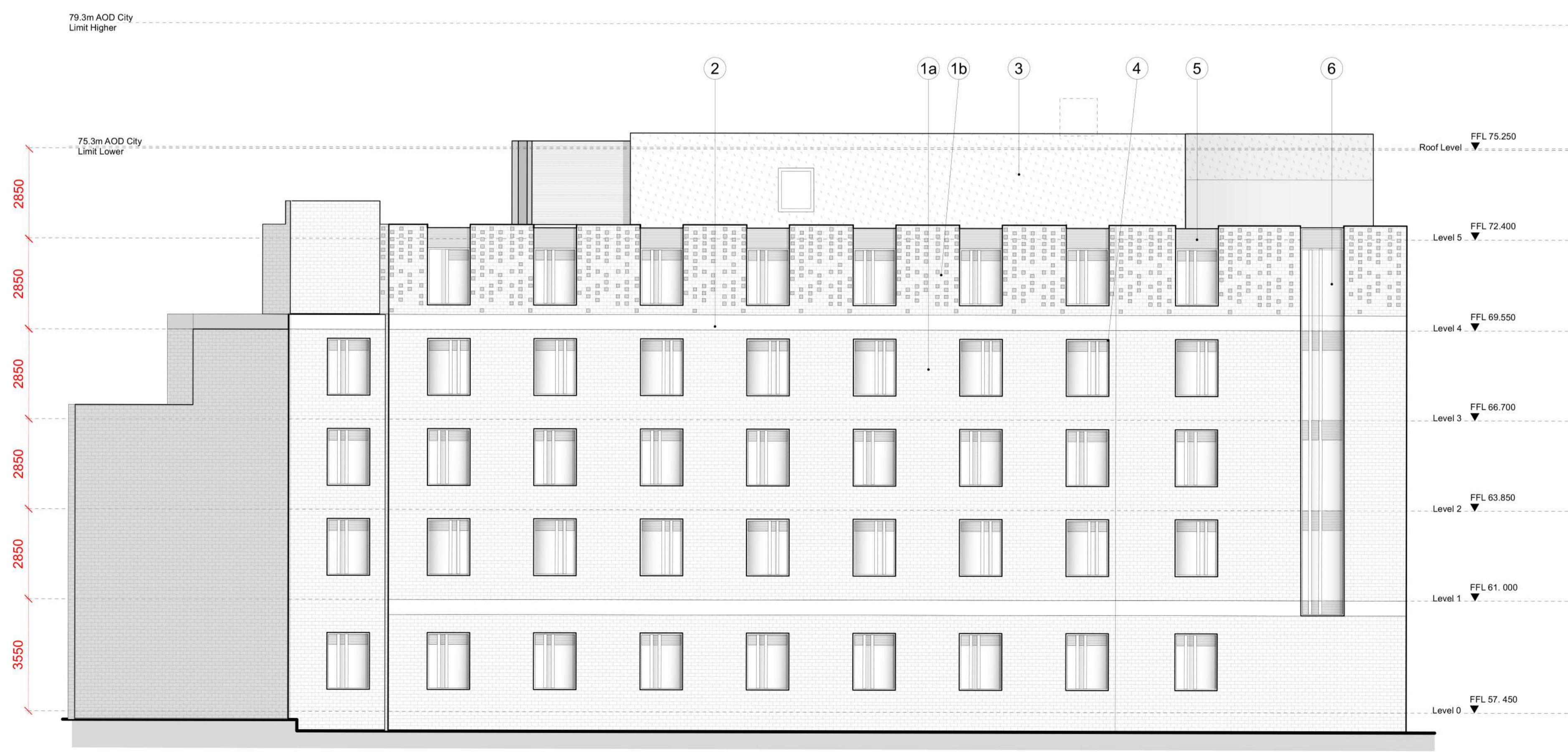
This drawing is the copyright of Axiom Architects. It is for planning application purposes only and may not be reproduced in whole or in part without permission. Drawings lodged for planning approval may be reproduced by the Planning Authority in accordance with the 'Copyright (Material Open to Public Inspection) (Marking of Copies of Plans and Drawings) Order 1990' and must carry the relevant copyright restriction note. Scaling from this drawing should only be carried out from a print at the scale and size specified within the title block. Responsibility for ensuring correct size reproduction remains with the reader.



3 Woodin's Way Elevation  
Scale: 1:100



- 1a Red Brick
- 1b Red Brick With Dark Brick Projections
- 2 Natural Stone Band
- 3 Green Wall
- 4 Aluminum Cassette
- 5 Louvred Panel
- 6 Aluminum Curtain Walling
- 7 Patinated Copper Metal Panels
- Existing Building Line



4 Wareham Stream Elevation  
Scale: 1:100

Rev	Date	Description	By	Chk

**AXIOM ARCHITECTS**  
 Morelands 5-27 Old Street London EC1V 9HL  
 Tel. 0207 421 8866 www.axiomarchitects.co.uk

Client  
**Dominus**

Project  
Courtyard By Marriott Oxford City Centre  
Oxford  
(Extension)

Drawing  
**Existing Elevation (2 of 2)**

Scale	Date	Drawn	Checked
REFER TO SCALE ON DRAWING	23/08/23	LG	JM

Drawing No. **6086 - P1 -021** Revision

Status  
**PLANNING**