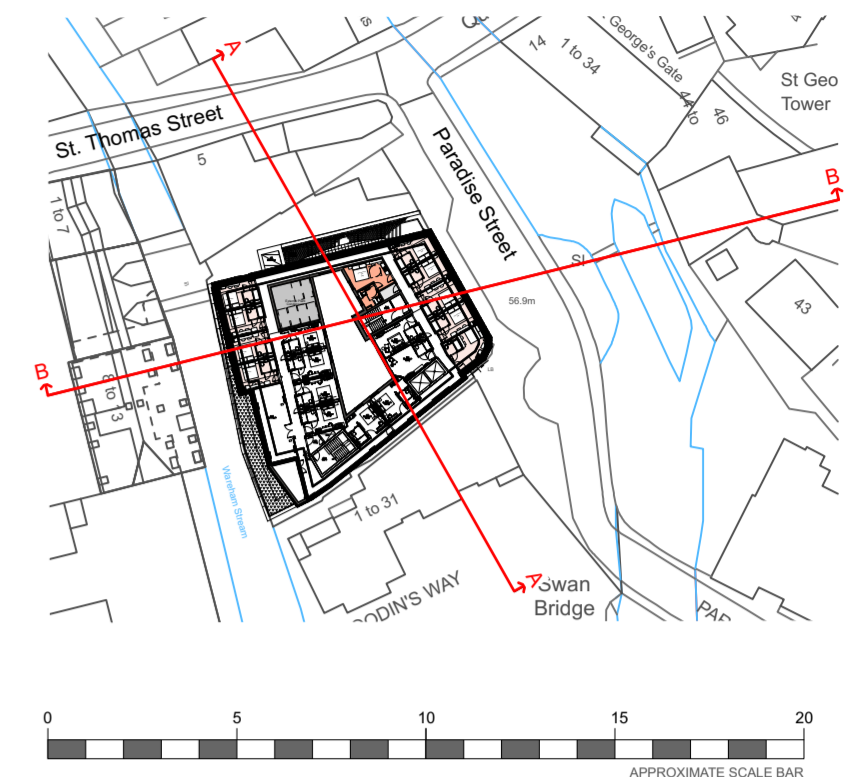
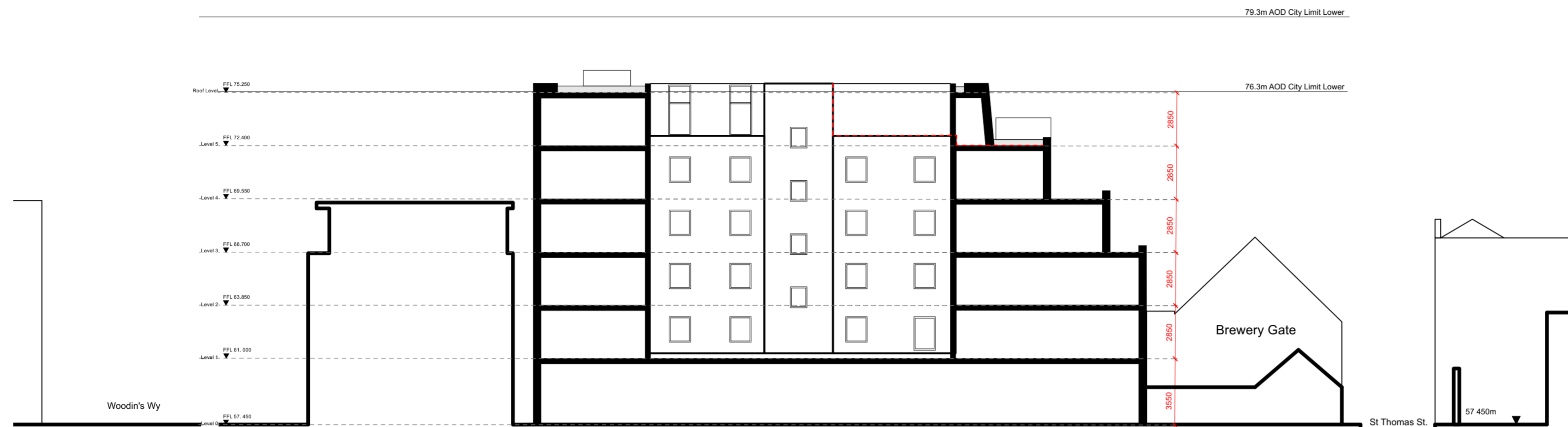


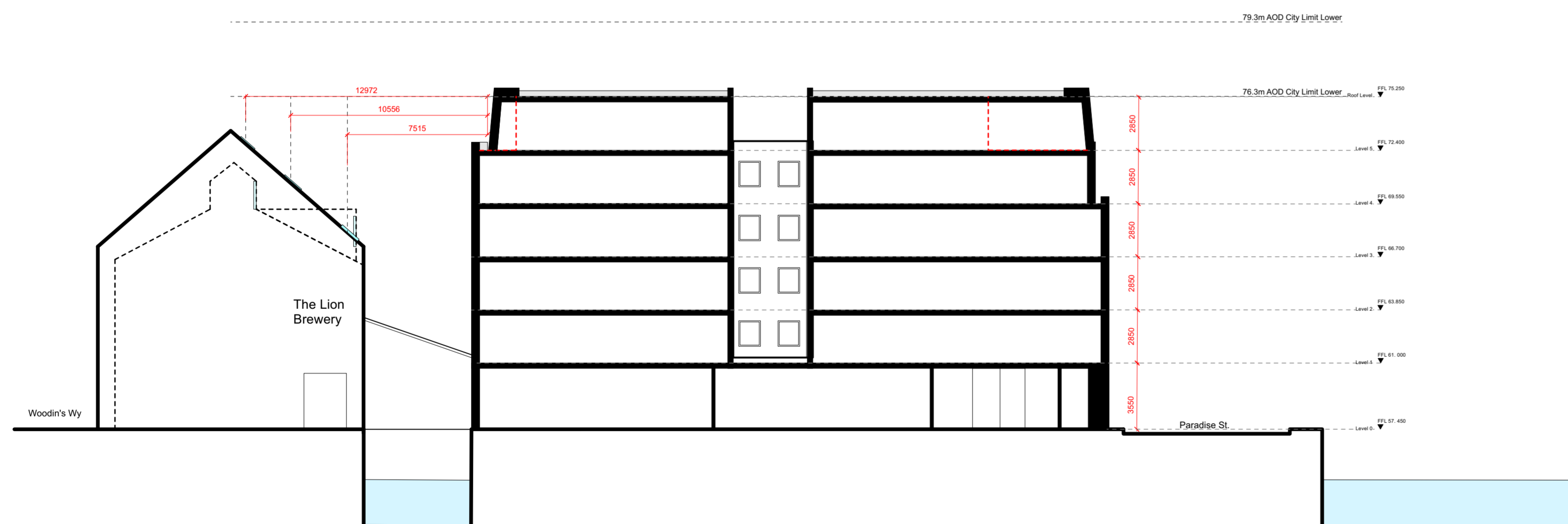
This drawing is the copyright of Axiom Architects. It is for planning application purposes only and may not be reproduced in whole or in part without permission. Drawings lodged for planning approval may be reproduced by the Planning Authority in accordance with the "Copyright (Material Open to Public Inspection) (Marking of Copies of Plans and Drawings) Order 1997" and must carry the relevant copyright restriction note. Scaling from this drawing should only be carried out from a print at the scale and size specified within the title block. Responsibility for ensuring correct size reproduction remains with the reader.



--- Existing Building Line



1 Proposed Section AA
Scale: 1:200



2 Proposed Section BB
Scale: 1:200

| Rev | Date | Description | By | Chk |
|-----|------|-------------|----|-----|
|-----|------|-------------|----|-----|

AXIOM ARCHITECTS
 Morelands 5-27 Old Street London EC1V 9HL
 Tel. 0207 421 8866 www.axiomarchitects.co.uk

Client
Dominus

Project
 Courtyard By Marriott Oxford City Centre
 Oxford
 (Extension)

Drawing
Proposed Sections

| Scale | Date | Drawn | Checked |
|-------|----------|-------|---------|
| 1:200 | 19/10/23 | LG | JM |

Drawing No. **6086 - P1 300**

Status
PLANNING