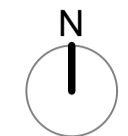
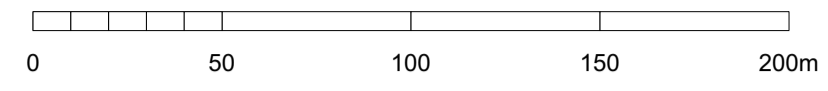
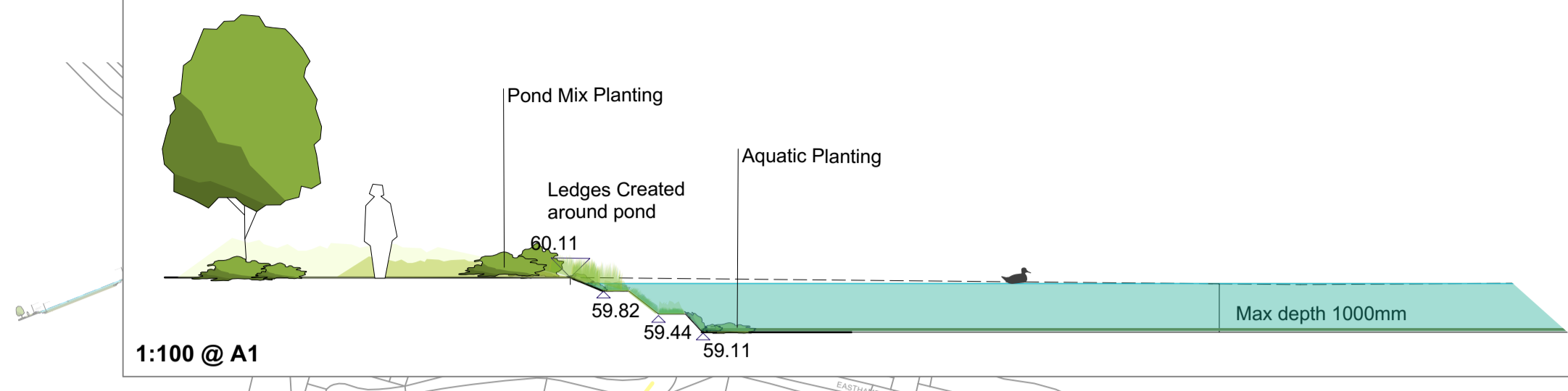


NOTES
 This drawing is the property of FPCR Environment and Design Ltd and is issued on the condition it is not reproduced, related or disclosed to any unauthorised person, either wholly or in part without written consent of FPCR Environment and Design Ltd.
 Ordnance Survey base mapping - supplied by client.

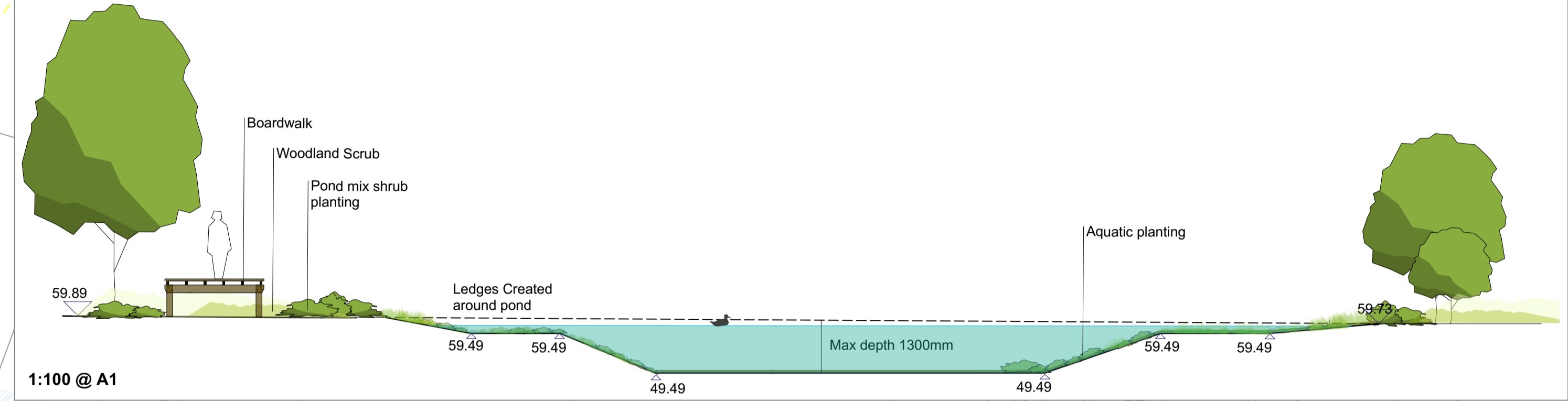


- KEY
- Indicative water Level
 - Proposed Ground Line
 - Existing Ground Line
 - Proposed Bund Cut

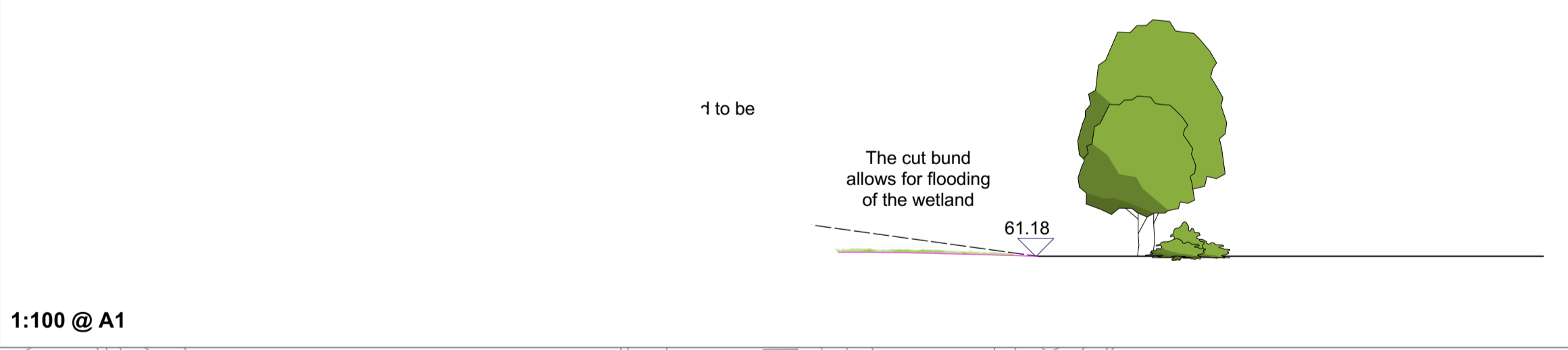
A-A Typical pond section



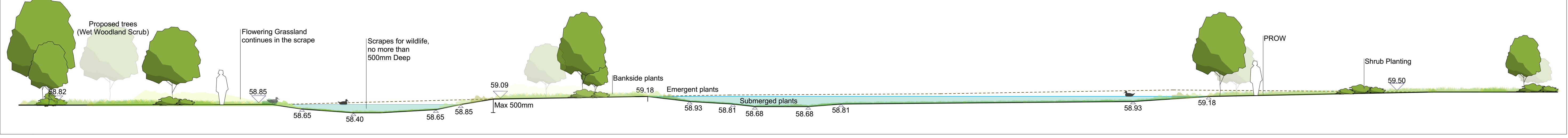
B-B Typical pond section



C-C Typical section showing removal of existing bund earthworks



D-D Typical scrape section



File: L:\10900\10930\LANDS\Drawings\DETAILS\10930-FPCR-XX-XX-DR-L-0014-15-16 vw.vwx