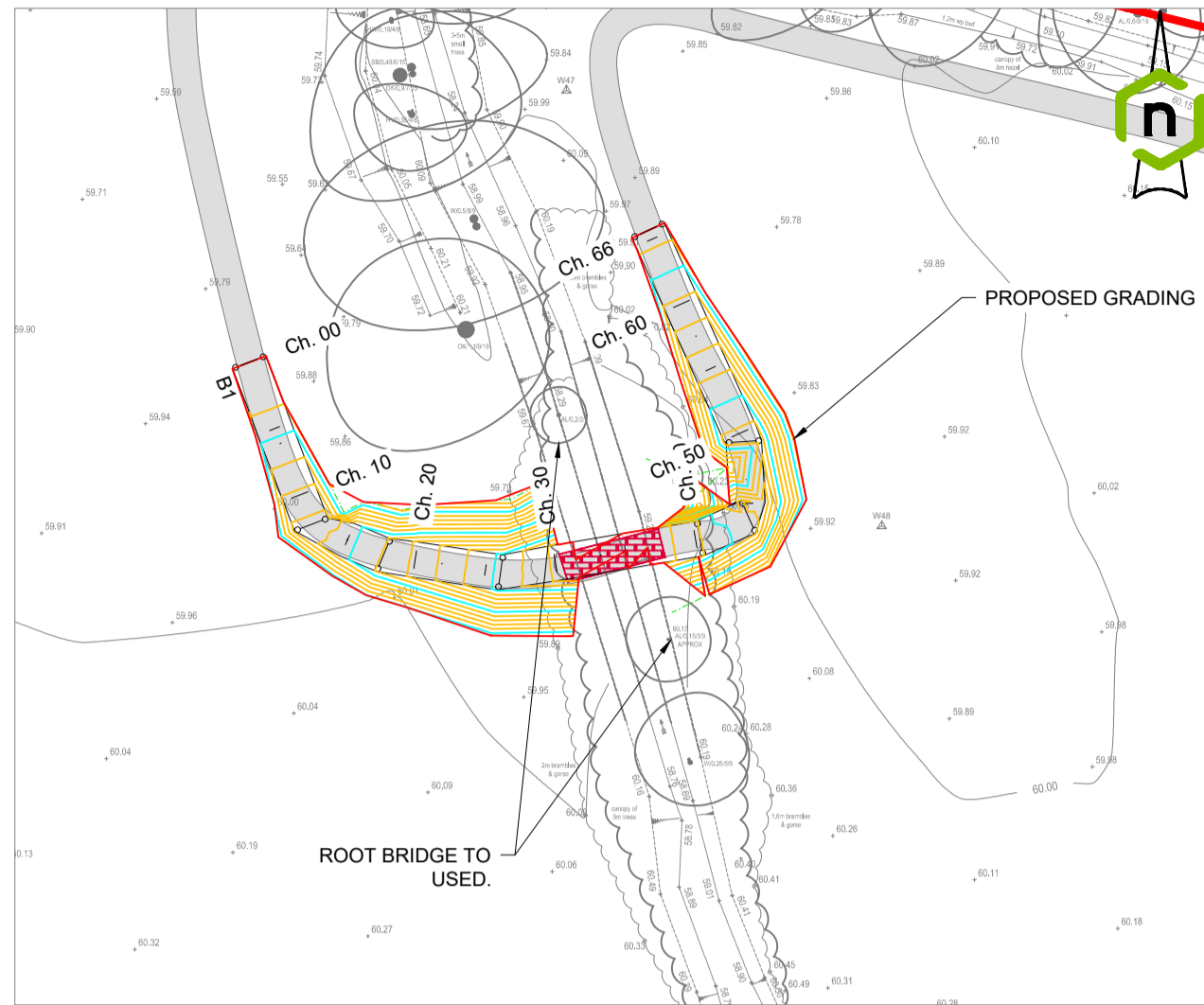
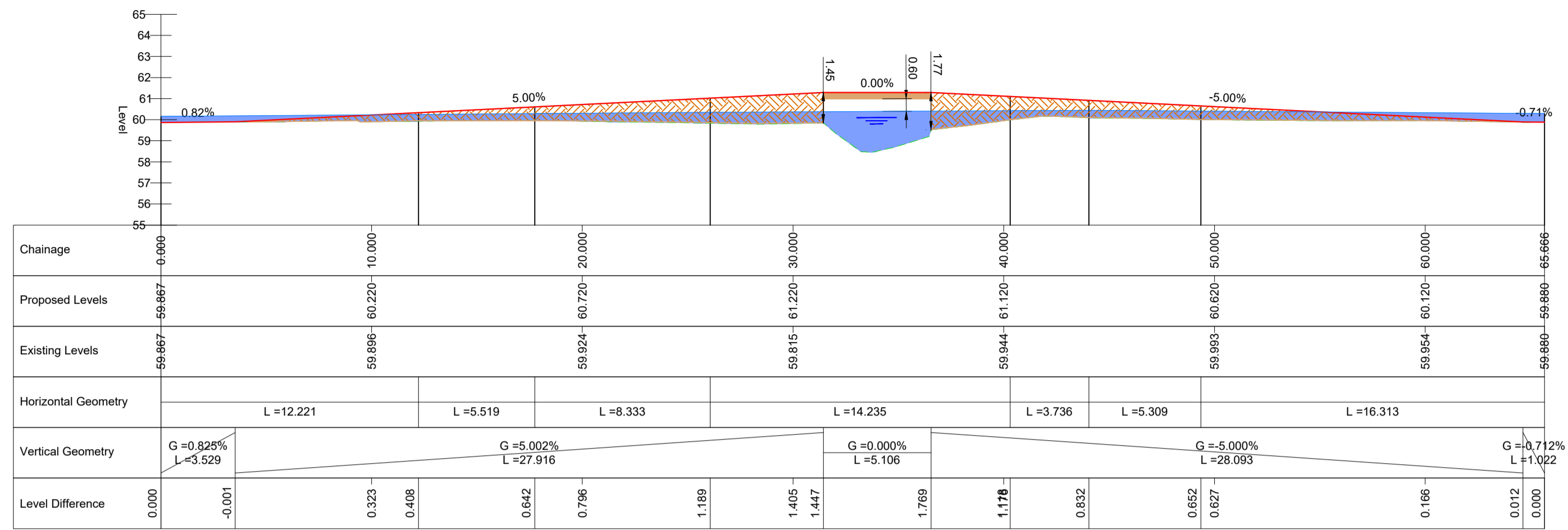


**GENERAL NOTES**

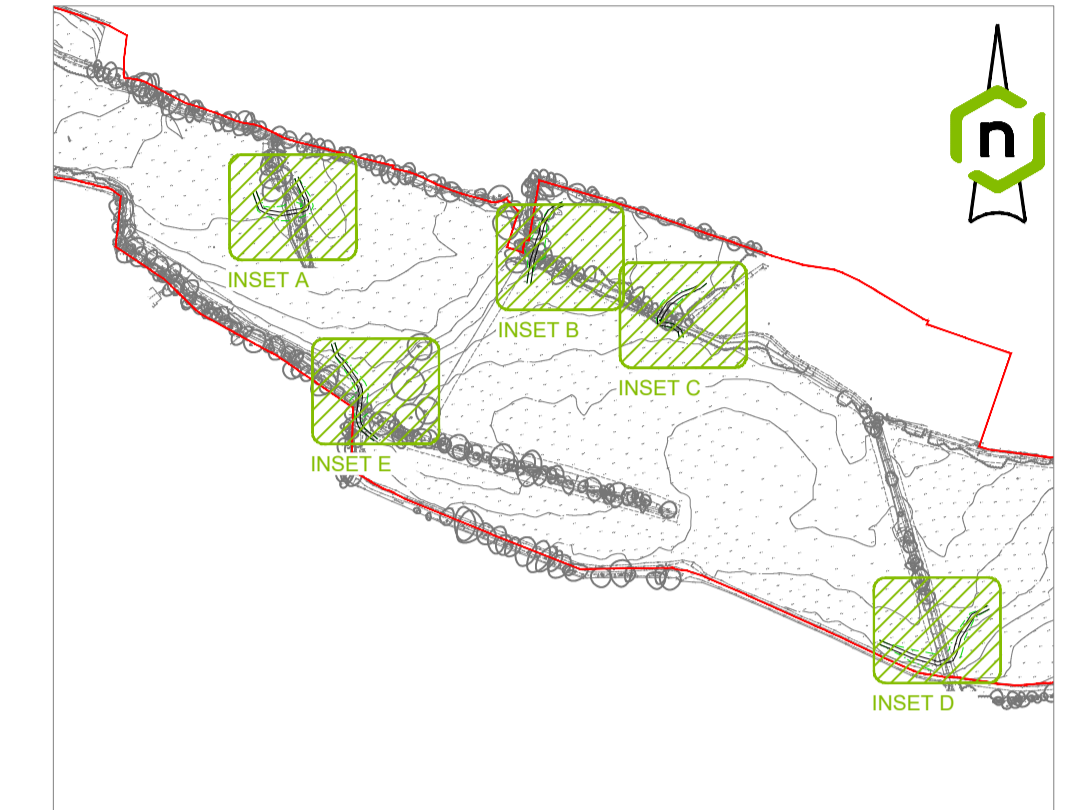
1. THIS DRAWING SHOULD NOT BE REPRODUCED IN WHOLE OR PART WITHOUT THE WRITTEN CONSENT OF LINK ENGINEERING.
2. DO NOT SCALE FROM THIS DRAWING. UNITS ARE IN METRES UNLESS OTHERWISE SPECIFIED.
3. THE CONTRACTOR IS TO CHECK ALL INFORMATION PROVIDED PRIOR TO COMMENCING WORKS AND SEEK CLARIFICATION FROM THE ENGINEER IN RESPECT TO ANY AMBIGUITIES FOUND.
4. THIS DRAWING SHOULD BE READ IN CONJUNCTION WITH ALL OTHER SCHEME SPECIFIC DRAWINGS.



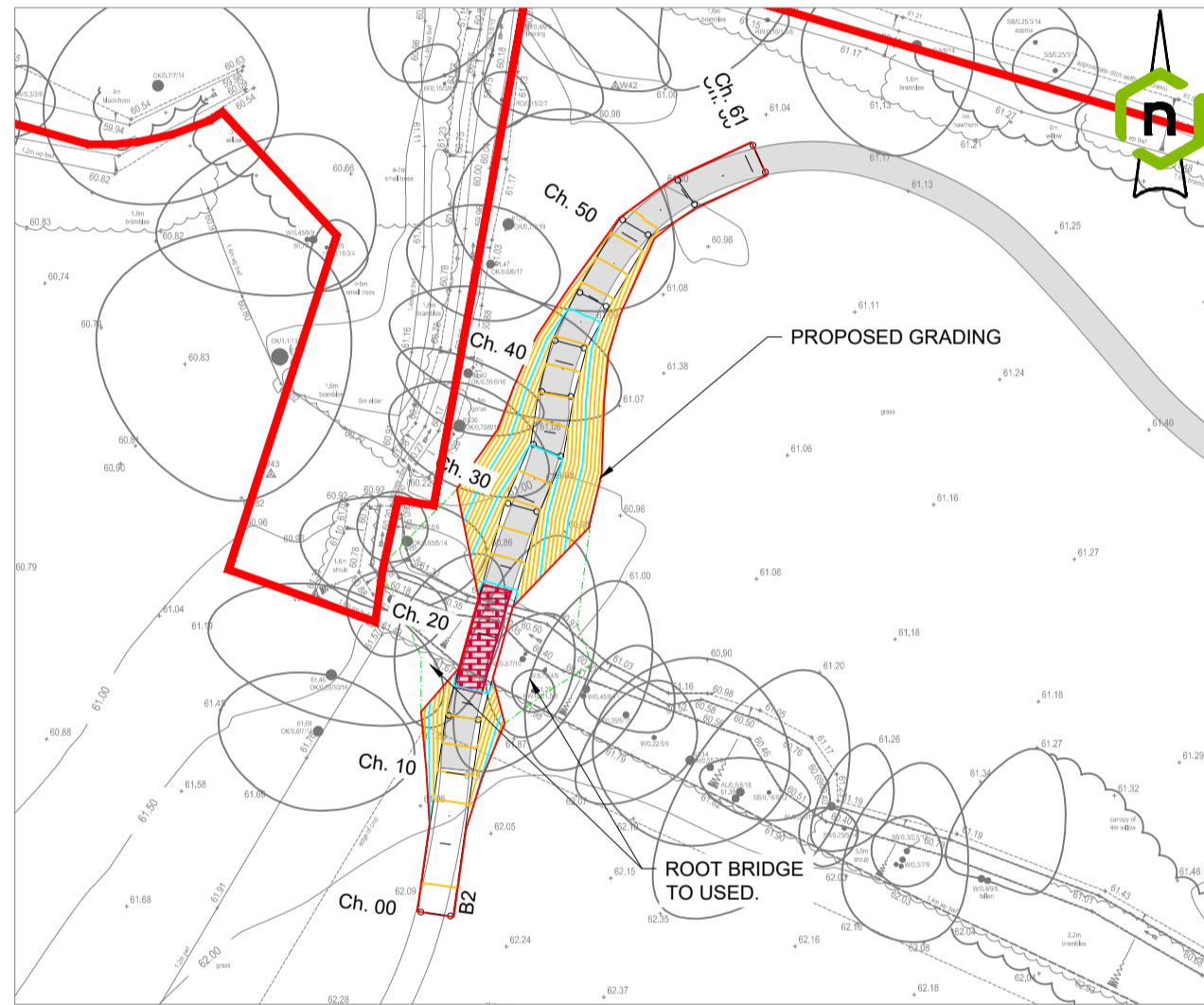
INSET A - BRIDGE 1  
1:500



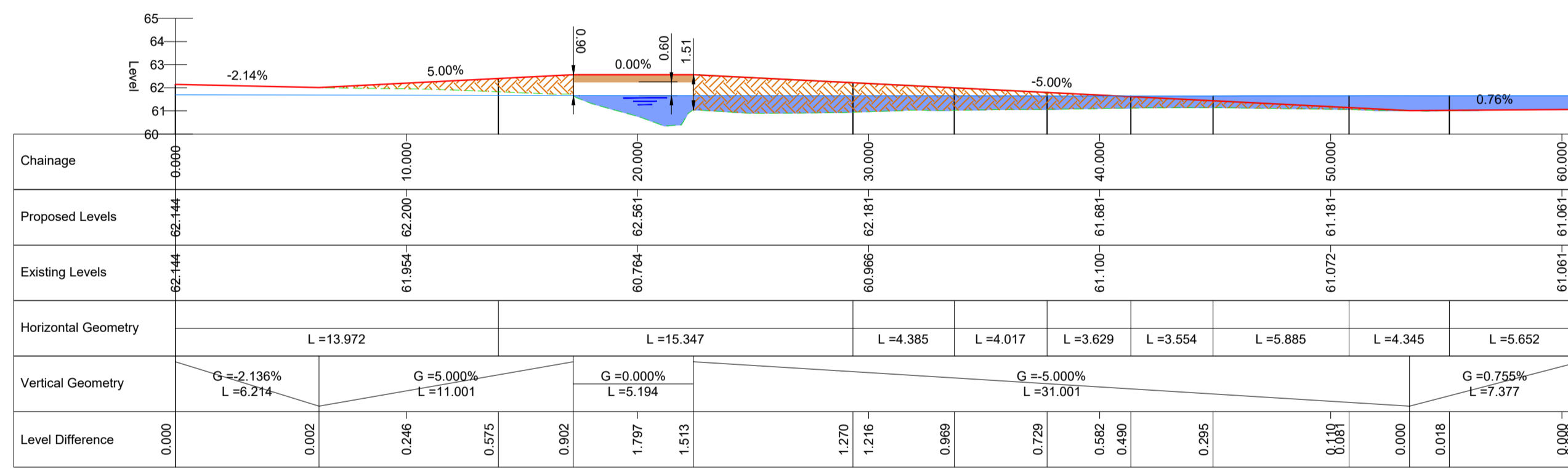
Bridge 1 Profile  
1:200



KEY PLAN  
1:5000

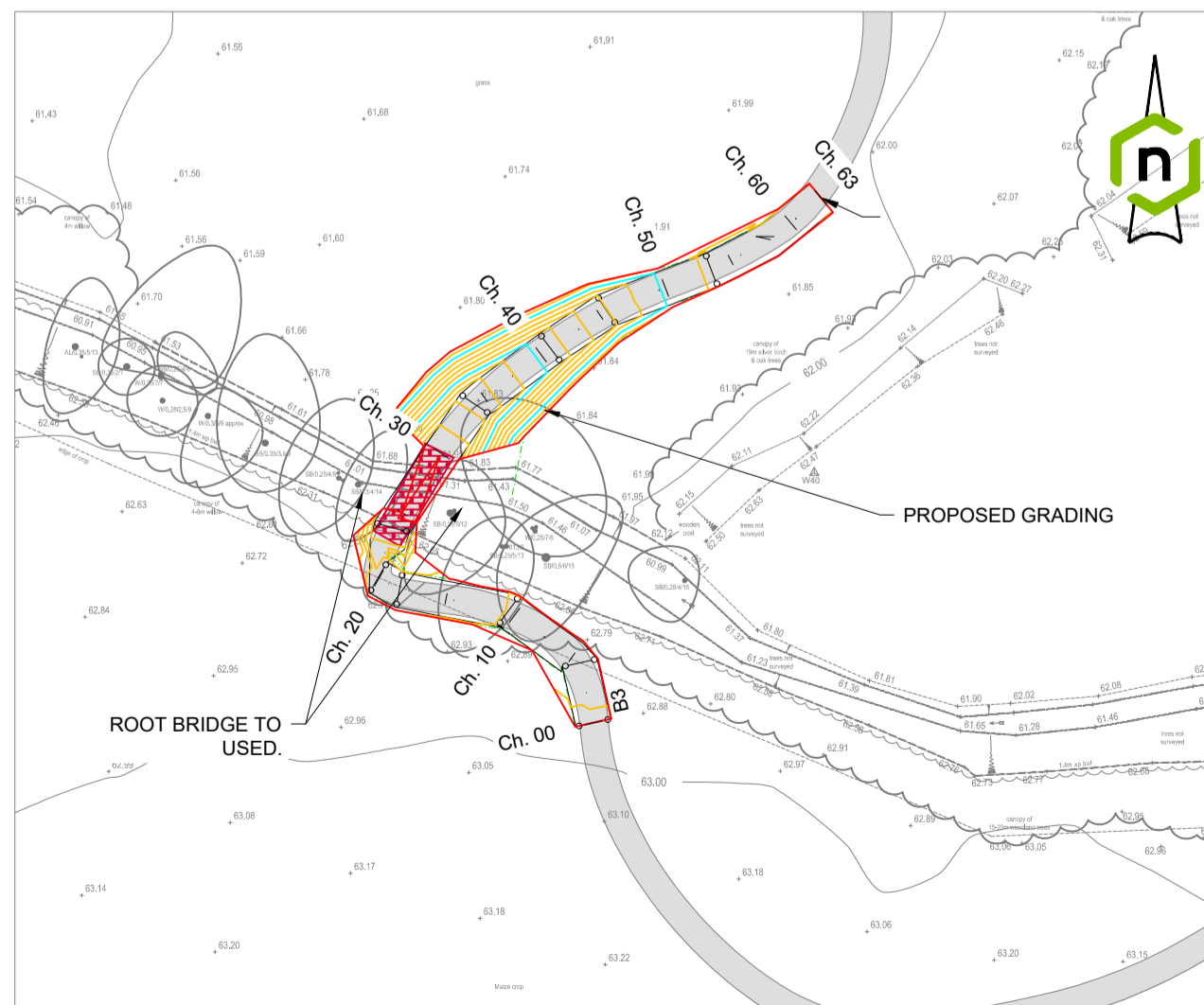


INSET B - BRIDGE 2  
1:500

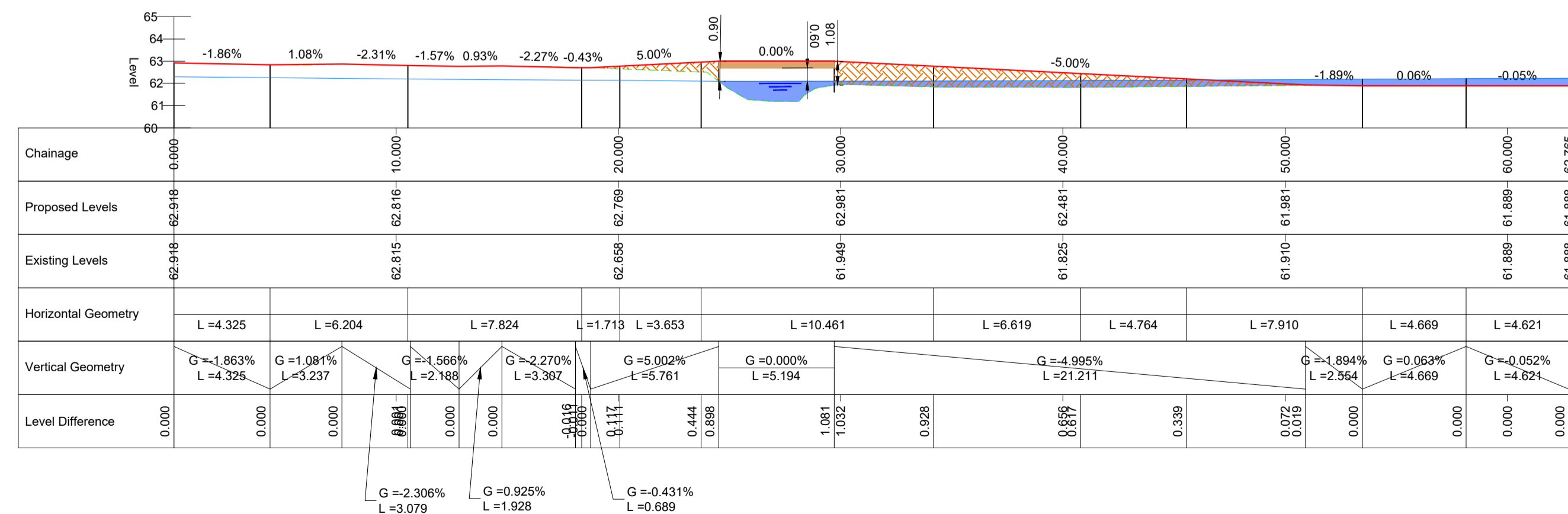


Bridge 2 Profile  
1:200

- KEY**
- SITE BOUNDARY
  - PROPOSED FOOTWAY BRIDGE
  - PROPOSED FOOTWAY (BY OTHERS)
  - FLOOD ZONE 3 EXTENT (1 IN 100 YEAR +20%)
  - PROPOSED FILL
  - EXISTING GROUND
  - PROPOSED LEVEL
  - FLOOD LEVEL
  - BOTTOM OF DITCH
  - TOP OF DITCH BANKS
  - MINOR CONTOURS (0.1m)
  - MAJOR CONTOURS (0.5m)



INSET C - BRIDGE 3  
1:500



Bridge 3 Profile  
1:200

|                 |          |    |
|-----------------|----------|----|
| INITIAL ISSUE   | 20.12.23 | FA |
| Rev. Amendments | Date     | By |

Client

**BLOOR HOMES**

**Link ENGINEERING**  
Find us @ www.linkeng.co.uk

Project  
LE22724  
NEWLANDS FARM, WOKINGHAM

Drawing  
BRIDGES LAYOUT  
SHEET 1 OF 2

Scale @ A1 Drawn Checked Rev  
AS SHOWN FA KL -

PLANNING (SS)