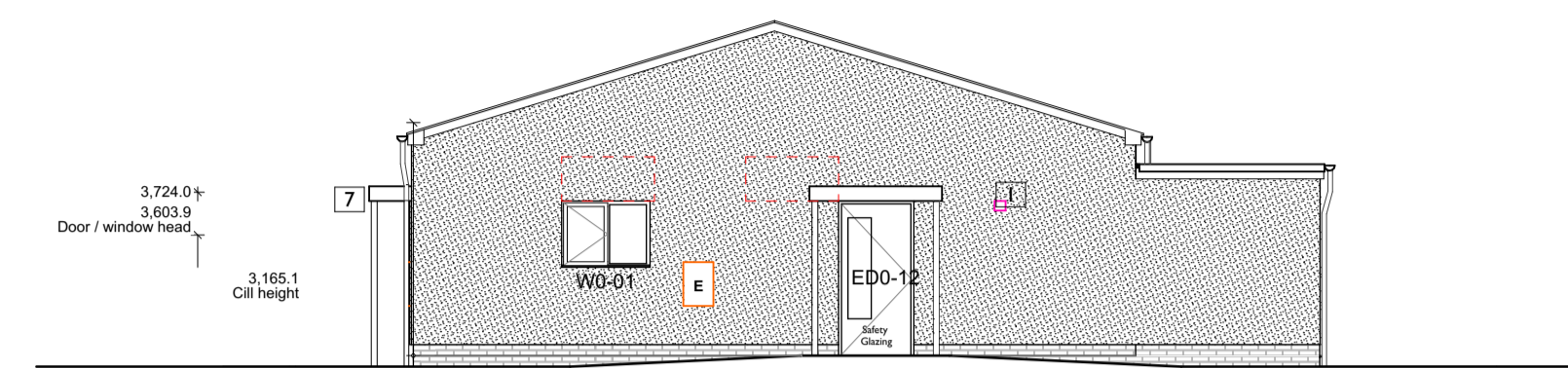
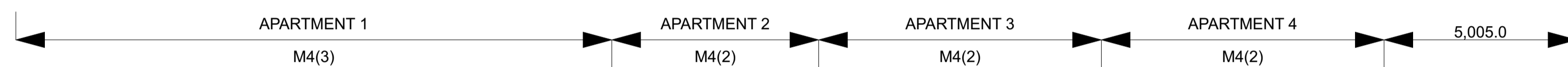


Front Elevation  
1:100



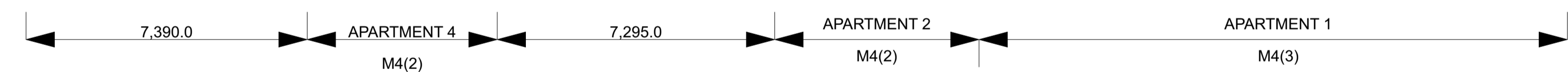
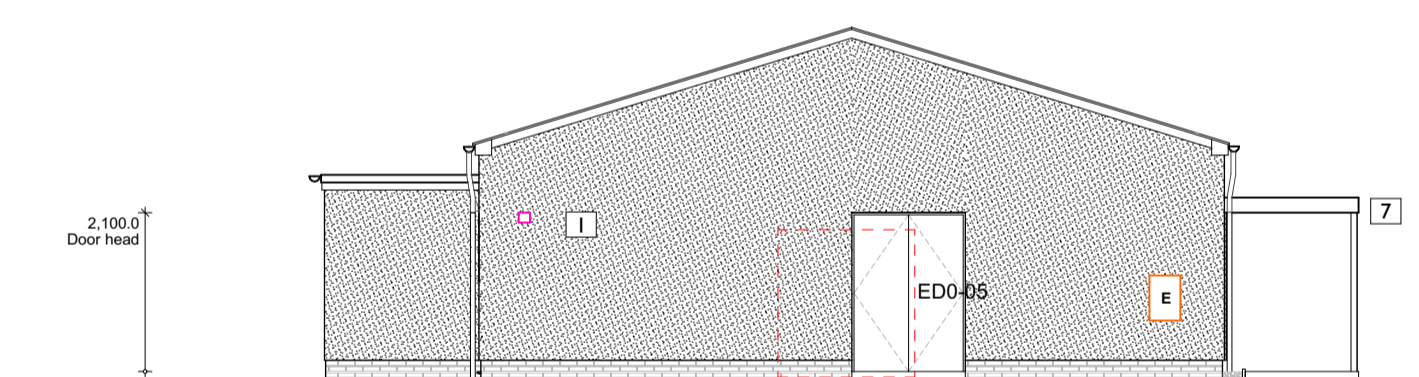
Side 1 Elevation  
1:100



Rear Elevation  
1:100



Side 2 Elevation  
1:100



MATERIALS LEGEND

- WALLS :
  - 1. Through colour render - K-rend Grey
  - 2. Cedar timber composite cladding - Pebble grey
- ROOF:
  - 3. Cromaslate
- FRONT DOORS:
  - 4. Composite colour - Dark blue
- REAR DOORS
- WINDOWS:
  - 5. UPVC - white, double glazed units
- CANOPES:
  - 6. Timber clad canopies with PPC steel support posts as required
- HANDRAIL:
  - 7. Handrail to external ramp, PPC steel



Croma Slate



K-rend Grey



Cedar cladding - Pebble grey



Door - Dark blue

C3	04.01.2023	Materials added	JB
P2	24.08.2023	Updated to Value Engineering changes	MB
P1	22.02.2023	First issue	MB
Rev/Date	Description	By	



5 Bingham Enterprise Centre, Merica Court,  
Bingham, Nottinghamshire, NG13 9JX  
01949 21100 | info@anotherkind.com | www.ajkind.com

JOB TITLE  
Cannock Road, Corby

DWG TITLE  
Proposed Elevations

JOB REF-SERIES-DWG NO. REVISION  
A-22027-21-001\_C3

STATUS  
FOR CONSTRUCTION

PROJECT NUMBER 22-027	SCALE 1:100	A1
DRAWN MB	CHECKED JB	

This document and its design content is copyright of Anotherkind Architects Ltd. It shall be used in conjunction with all other associated project documents including models, specifications, schedules and related consultation documents. Do not state from documents. All dimensions to be checked on site. Immediately report any discrepancies, errors or omissions on this document to the Originator. Document to be used only for status noted. If in doubt ASK.