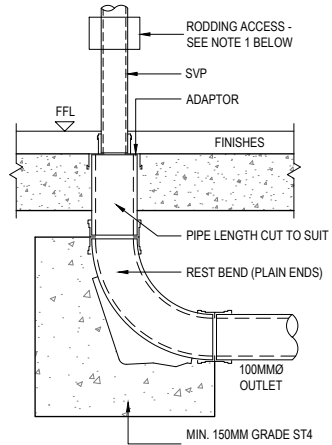


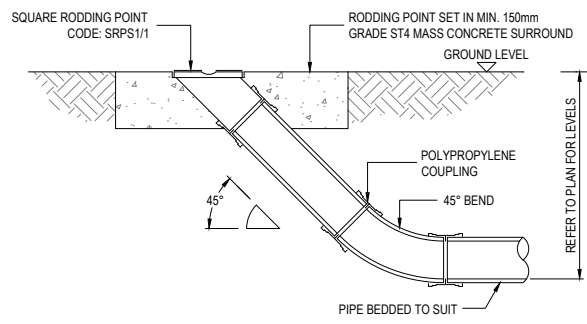
RWP WITH 1000 OUTLET CONNECTION DETAIL

NOTE:
1. WHERE THE RWP CONNECTS TO THE SW NETWORK VIA A JUNCTION, RODDING ACCESS MUST BE PROVIDED.

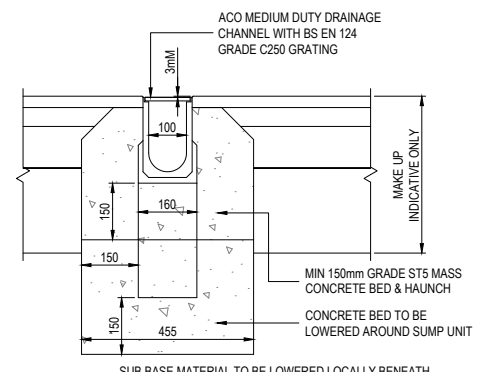


INTERNAL SVP DETAIL

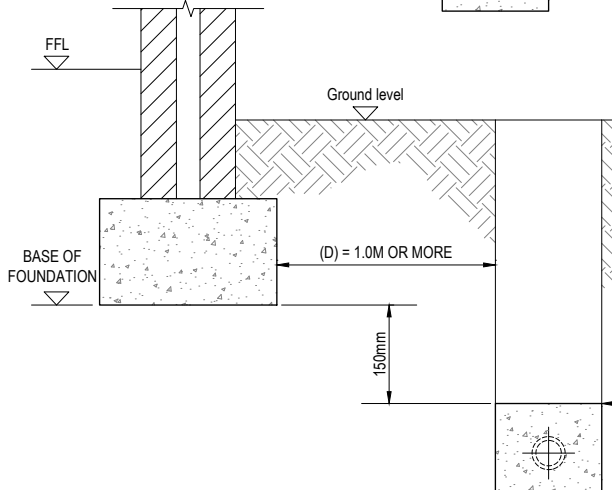
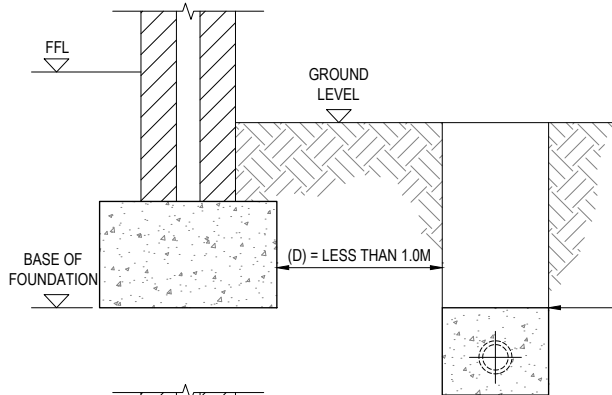
NOTE:
1. WHERE THE SVP CONNECTS TO THE FW NETWORK VIA A JUNCTION, RODDING ACCESS MUST BE PROVIDED.



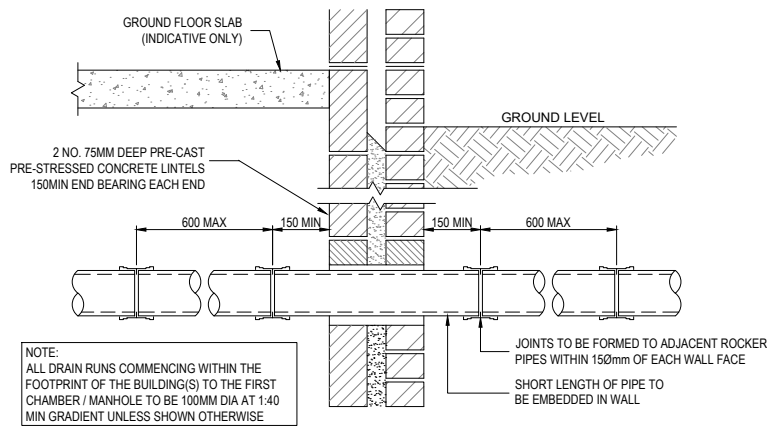
RODDING POINT INSTALLATION DETAIL



DRAINAGE CHANNEL CONSTRUCTION DETAIL

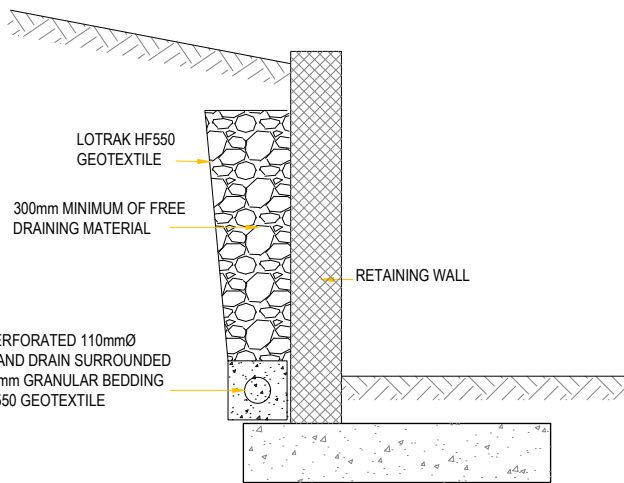


PROTECTION OF PIPES ADJACENT TO BUILDING DETAIL

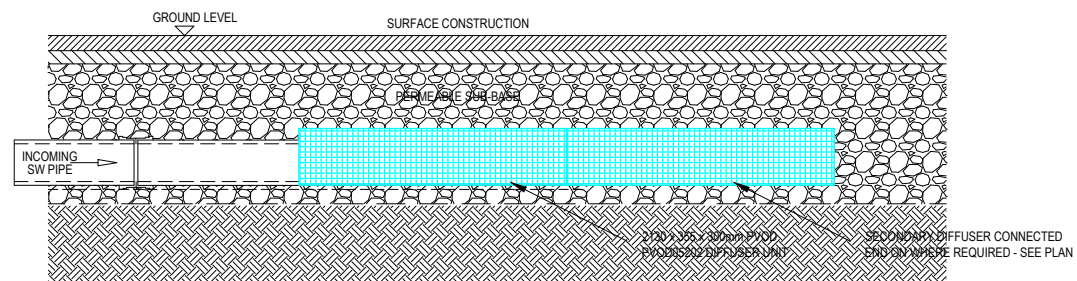


PIPE / WALL JUNCTION DETAIL

NOTE:
1. IF VOID IS PRE-FORMED THROUGH WALL USING LINTEL OVER OR SIMILAR MEANS, REMAINING VOID IS TO BE COMPLETELY SEALED BOTH SIDES WITH RIGID SHEET MATERIAL OR FILLED USING WATERPROOF EXPANDING FOAM SEALANT OR SIMILAR APPROVED.



RETAINING WALL PRESSURE RELIEF DRAIN DETAIL



TYPICAL SECTION THROUGH SURFACE WATER DIFFUSER INTO SUB-BASE RESERVOIR

NOT FOR CONSTRUCTION

NOTES

1. This drawing is to be read in conjunction with all relevant architects, engineers and specialist sub-contractors drawings and specifications.
2. All setting out to be in accordance with the Architects drawings. Dimensions must not be scaled from the drawing.

Rev	24.05.23	Preliminary Issue	JLB
Date		Revision Description	Issued by

Drawing Status: **SO - Work in Progress**

GAP LTD
GODSELL • ARNOLD
 PARTNERSHIP LTD
 Consulting Civil and Structural Engineers
 7 Arrowsmith Court, Station Approach
 Broadstone, Dorset, BH18 8AX
 Telephone: 01202 600900
 Website: www.gapltd.net

Client: **Brooklands Homes**
 Project: **Solstrand, Station Rd, Bagshot**
 Drawing Title: **Drainage Construction Details**
 2 of 2

Scale:	N.T.S	Drawn:	JLB	Checked:	IJW
Project-Originator-Zone-Level-Type-Role		Drawing No.:		Revision:	

23235-GAP-XX-XX-DR-C- 9301 P01