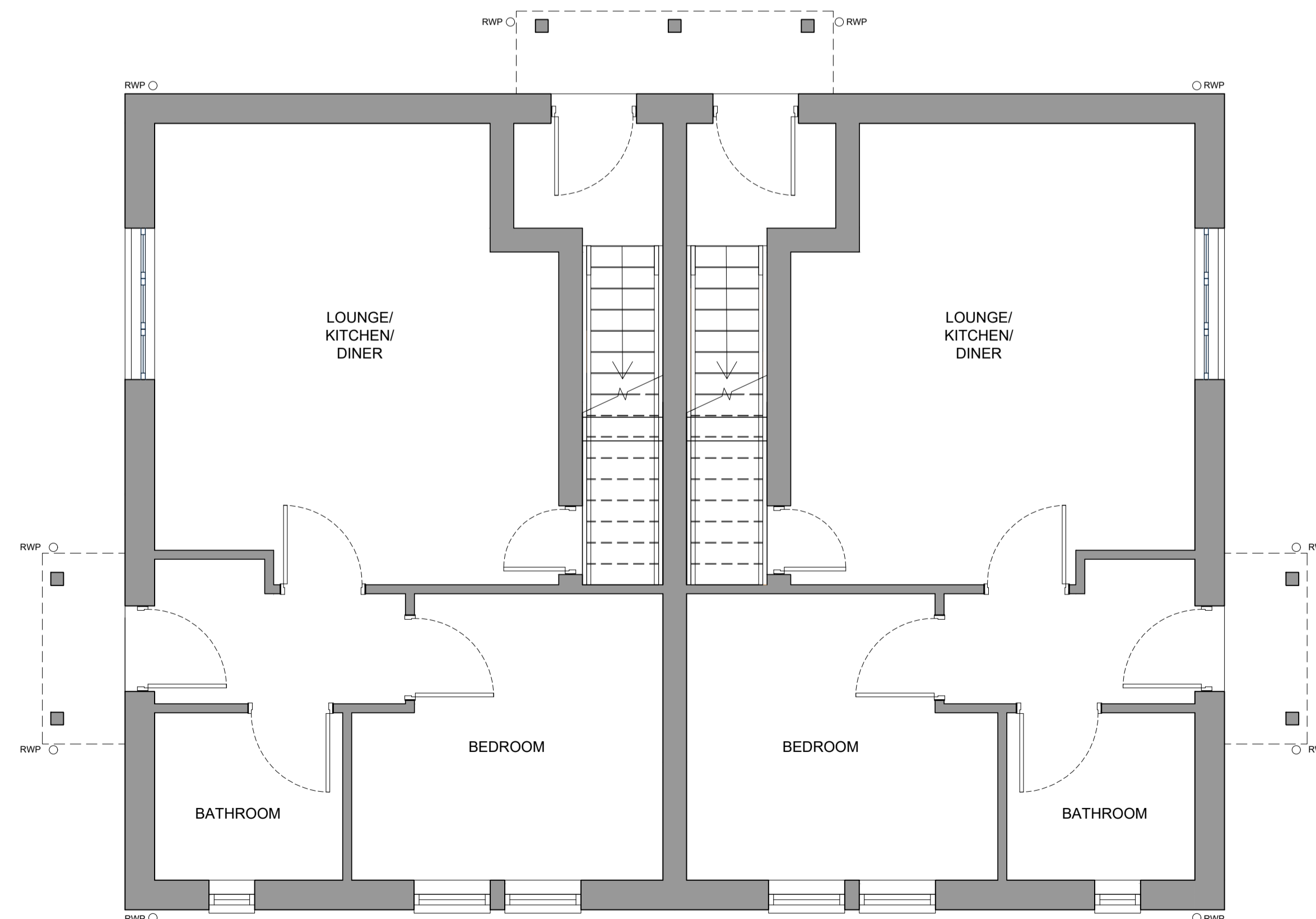


FIRST FLOOR PLAN



GROUND FLOOR PLAN

REV	DATE	DRWN	CHKD	REVISION DETAILS
A	15/12/2023	JS	RARW	PLANNING ISSUE

PROJECT TITLE
Proposed Residential Development at
Glen Garry Farm, Ruskington
Lincolnshire, NG34 9TH

CLIENT
Stonegate Agriculture Ltd.

© Harrison & Pitt Architects Ltd

DRAWING TITLE
AS PROPOSED PLANS
Indicative 4 x 1 Bedroom Apartments

DRAWING STATUS
PLANNING

SCALE: 1:50 @ A1
DATE: December 2023

DRAWING No. 2312-120
REVISION A
DRAWN: JS
CHECKED: RARW



HPA CHARTERED ARCHITECTS
29 CASTLE HILL, LANCASTER LA1 1YN

01524 32479
hpa@hpa.ltd
www.hpa.ltd