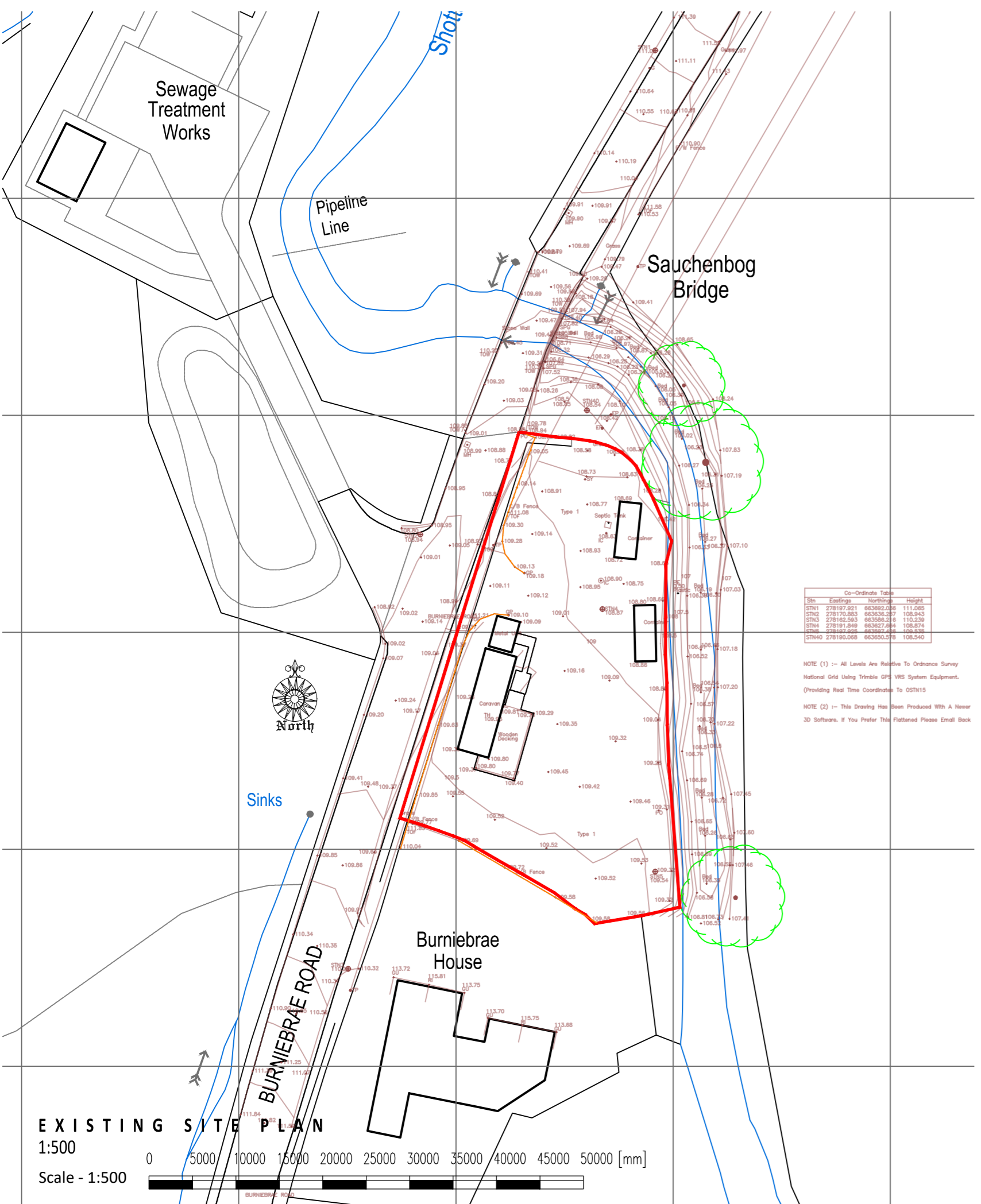


**Indicative Planting Schedule**

CODE	SPECIES	SPECIFICATION	GIRTH	HEIGHT	DENSITY
<b>Trees - Front Garden</b>					
AcS	Acer campestre 'Streetwise'	Extra Heavy Standard: 3x: RB: Clear Stem min. 200cm	16-18cm	400-450cm	Counted
Pav	Prunus avium	Heavy Standard: 5 brks: 3x: RB: Clear Stem 175-200cm	12-14cm	350-425cm	Counted
Sau	Sorbus aucuparia	Heavy Standard: 5 brks: 3x: RB: Clear Stem 175-200cm	12-14cm	350-425cm	Counted
<b>Trees - Rear Garden</b>					
AgI	Alnus glutinosa	Heavy Standard: 5 brks: 3x: RB: Clear Stem min. 200cm	12-14cm	350-425cm	Counted
Bpu	Betula pubescens	Extra Heavy Standard: 3x: RB: Clear Stem min. 200cm	16-18cm	400-450cm	Counted
PlfY	Pinus sylvestris	Leader with Laterals: Feathered to base: 5x: RB	12-14cm	300-350cm	Counted
Qr	Quercus robur	Extra Heavy Standard: 3x: RB: Clear Stem min. 200cm	16-18cm	400-450cm	Counted
<b>Ornamental Shrubs</b>					
Ctr	Ceanothus thyrsiflorus repens	Bushy: 5 brks: C	3L	-	3/m <sup>2</sup>
CaS	Comus alba 'Sibirica'	Branched: 3 brks: C	3L	40-60cm	2/m <sup>2</sup>
Cd	Cotoneaster dammeri	Bushy: 4 brks: C	3L	-	3/m <sup>2</sup>
Eci	Erica cinerea	Bushy: C	2L	-	6/m <sup>2</sup>
EBG	Euonymus fortunei 'Emerald Gaiety'	Bushy: 7 brks: C	3L	20-30cm	3/m <sup>2</sup>
HRE	Hebe 'Red Edge'	Bushy: 5 brks: C	3L	-	4/m <sup>2</sup>
LAF	Lavandula angustifolia 'Hidcote'	Bushy: 5 brks: C	3L	20-30cm	3/m <sup>2</sup>
PIA	Potentilla fruticosa 'Abbotwood'	Bushy: 4 brks: C	3L	-	3/m <sup>2</sup>
RoMJU	Rosmarinus officinalis 'Miss Jessop's Upright'	Bushy: 4 brks: C	3L	30-40cm	3/m <sup>2</sup>
SJLP	Spiraea japonica 'Little Princess'	Bushy: 6 brks: C	3L	30-40cm	3/m <sup>2</sup>
<b>Native Wildlife Hedgerow</b>					
Cav	Corylus avellana	1+1: Transplant - seed raised: Branched: 3 brks: B	50%	60-80cm	7/m
Cmo	Cataegus monogyna	1+1: Transplant - seed raised: B	20%	60-80cm	7/m
la	Ilex aquifolium	Leader with Laterals: C 3L	5%	60-80cm	7/m
Lfra	Lonicera fragrantissima	Branched: 5 brks: C 3L	50%	60-80cm	7/m
Pap	Prunus spinosa	1+1: Transplant - seed raised: Branched: 2 brks: B	15%	60-80cm	7/m
Rca	Rosa canina	1+1: Transplant - seed raised: Provenance UK Area 304: B	50%	60-80cm	7/m
Rfr	Rubus fruticosus	1+1: Cutting: Branched: 2 brks: B	5%	-	7/m
Sn	Sambucus nigra	1+1: Transplant - seed raised: Branched: 3 brks: B	50%	60-80cm	7/m
Vo	Viburnum opulus	1+1: Transplant - seed raised: Branched: 2 brks: B	15%	40-60cm	7/m
<b>Bulbs</b>					
Ane	Anemone nemorosa	Size 3: British Native origin	25%	25/m <sup>2</sup>	
Crf	Crocus flavus	Grade 5/7	25%	25/m <sup>2</sup>	
Gn	Gaillardia pinnatifida	Grade 5/6	25%	25/m <sup>2</sup>	
Hns	Hyacinthoides non-scripta	Grade 5/7	25%	25/m <sup>2</sup>	



Enspire Architecture Studio Ltd accepts responsibility for this document to the commissioning party only and not to any other

Enspire Architecture Studio Ltd does not accept liability for accuracy or veracity of survey information provided by others and used in the preparation of this drawing.

All vertical and horizontal dimensions and levels must be checked and verified on site.

Note: Do not scale from drawing, refer to stated dimensions only.

Copyright: Enspire Architecture Studio Ltd

# PLANNING

REV-A - Indicative planting schedule & landscaping updated as requested by Planning for biodiversity. 31-1-24

## REVISIONS



**Enspire (Chartered) Architects**  
 T: 01259 213133  
 M: 07732 847111  
 E: mark@enspire-architects.co.uk  
 W: www.enspire-architects.co.uk  
 Office 29, Alloa Business Ctr,  
 Whins Rd, Alloa FK10 3SA

## PROJECT

Proposed Residential Unit  
 Burniebrae Rd, Chapelhall  
 Airdrie ML6 8QB

## DRAWING TITLE

EX & PROPOSED SITE LAYOUTS

CLIENT  
**Mr & Mrs S. Lydon**

SCALE **Noted** DATE **January 2024**

DRAWING NO. **1623 / PL / 01 A**