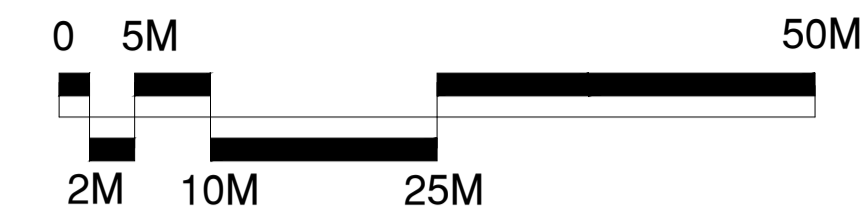


Langton Green Community Sports Association

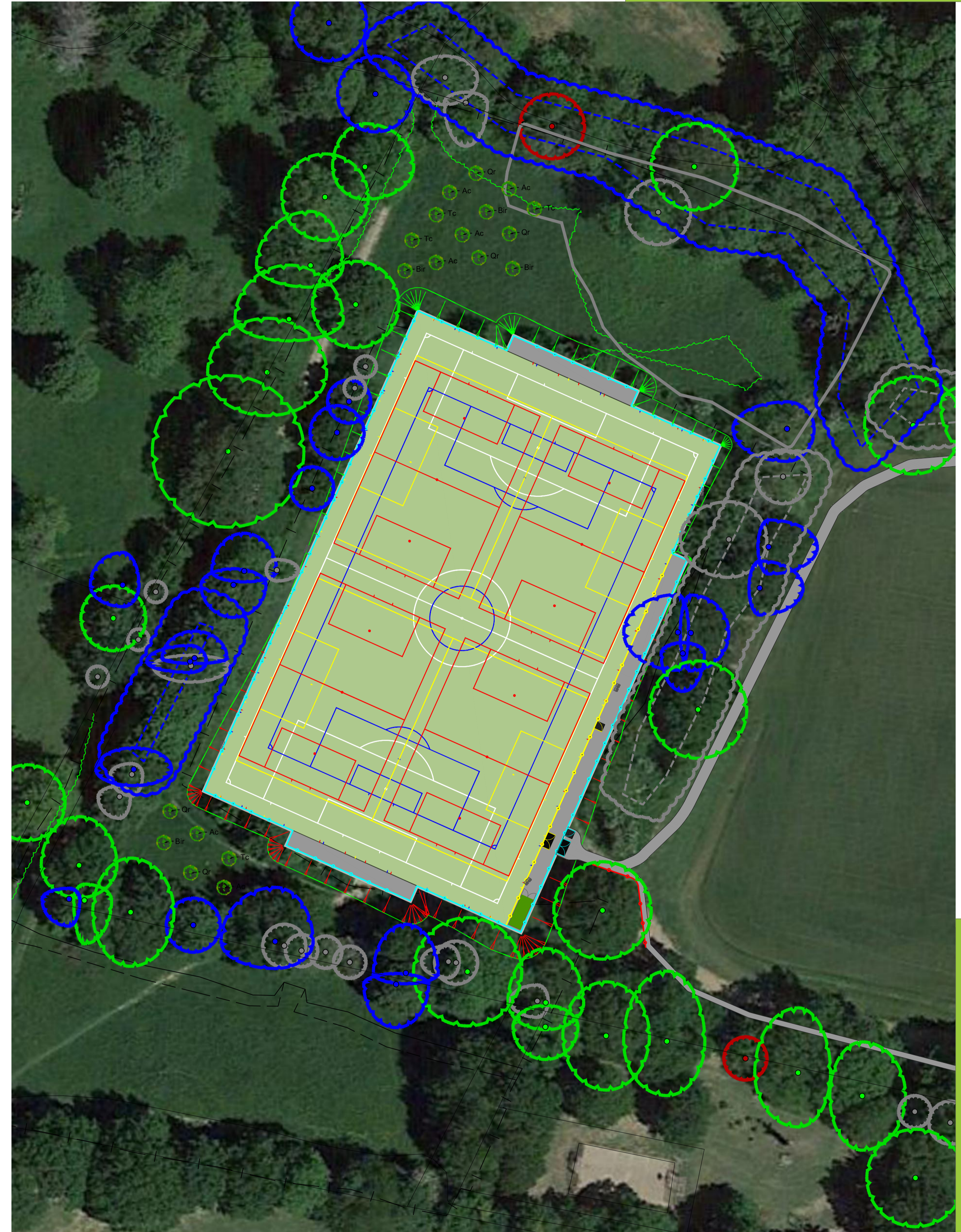
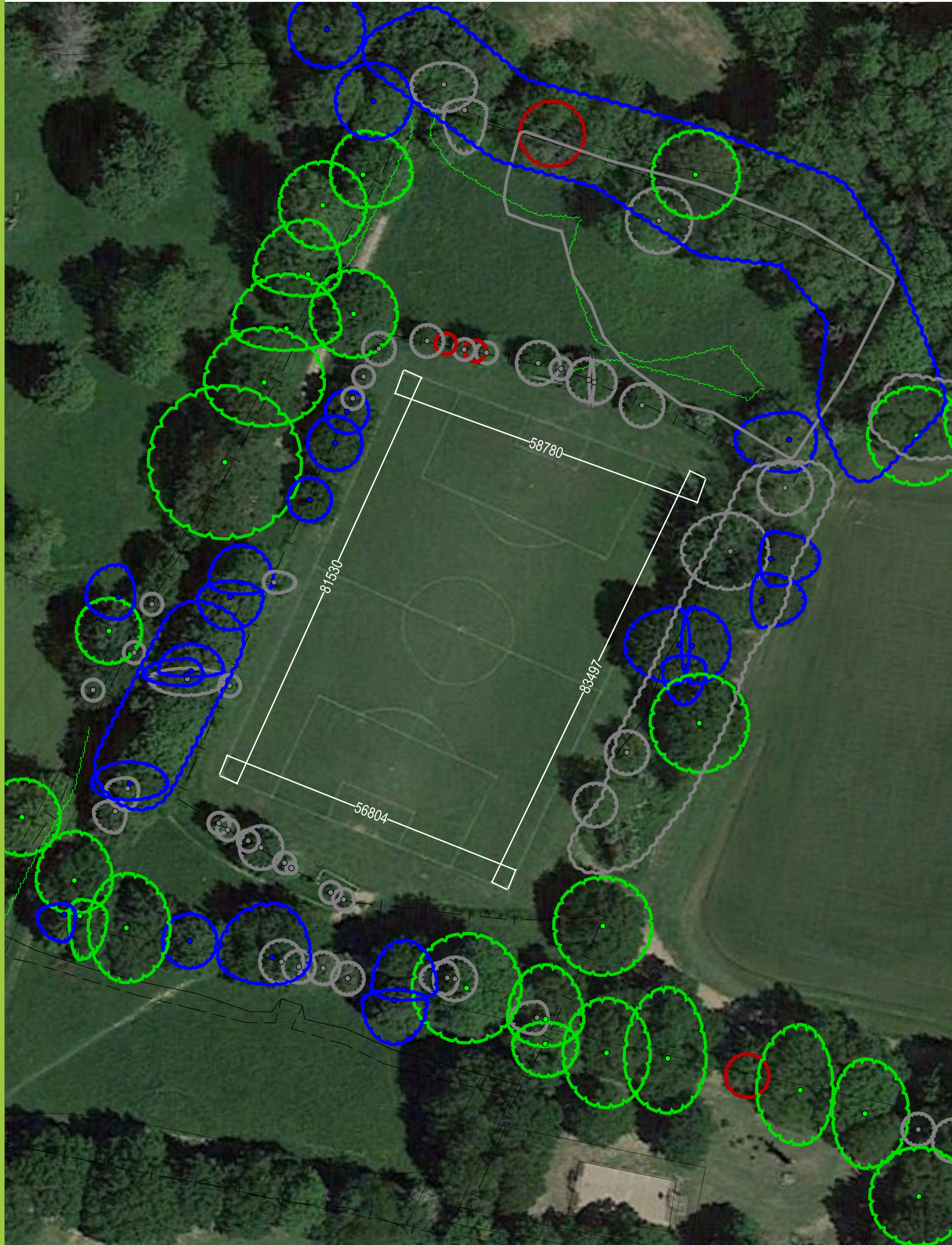
Creation of an Artificial Grass Pitch



SSU
Surfacing Standards Limited
Sports Pitch Consultants

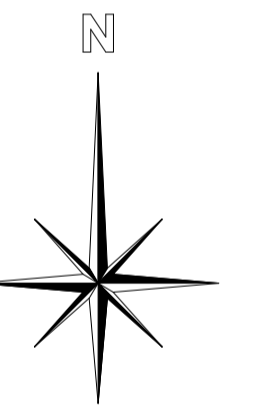
CONSULTANTS
Langton Green Sports Association
Office 2, Langton Green House,
Central Road, Spelthorpe, LE12 9JY
01535 400 012

- DO NOT SCALE FROM DRAWING UNLESS FOR PLANNING PURPOSES ONLY. ALL DIMENSIONS TO BE CHECKED ON SITE PRIOR TO COMMENCEMENT OF WORKS.
- THIS DRAWING IS COPYRIGHT TO SURFACING STANDARDS LTD.
- ALL PERSONNEL SHOULD BE AWARE OF THE HEALTH AND SAFETY PLAN WHICH IS RETAINED IN THE SITE MANAGERS OFFICE.

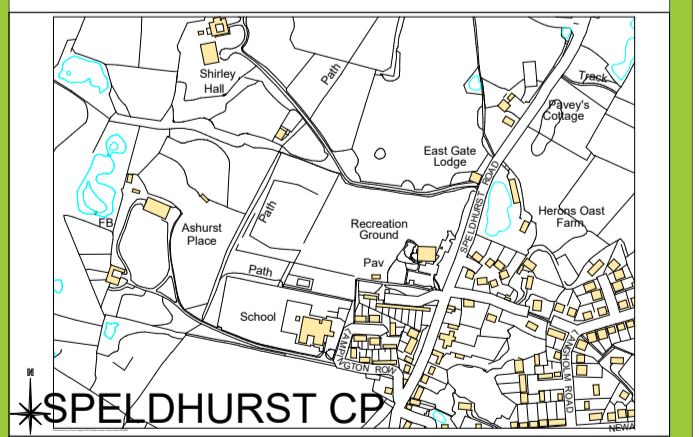


Existing Pitch Approx. 82x57m

Proposed Pitch 91x55m



REV	DESCRIPTION	ME	WB	28.11.23
REV	DESCRIPTION	CK	DATE	
00	PLANNING ISSUE			



AUTHOR
ME

TITLE
Langton Green Community Sports Association
Creation of an Artificial Grass Pitch
Playing Field Layout

PROJECT	SCALE	SIZE
LANO-CLS030	1:500	A1
DRAWING No	REVISION	
09	00	