

# Showtown External Signs

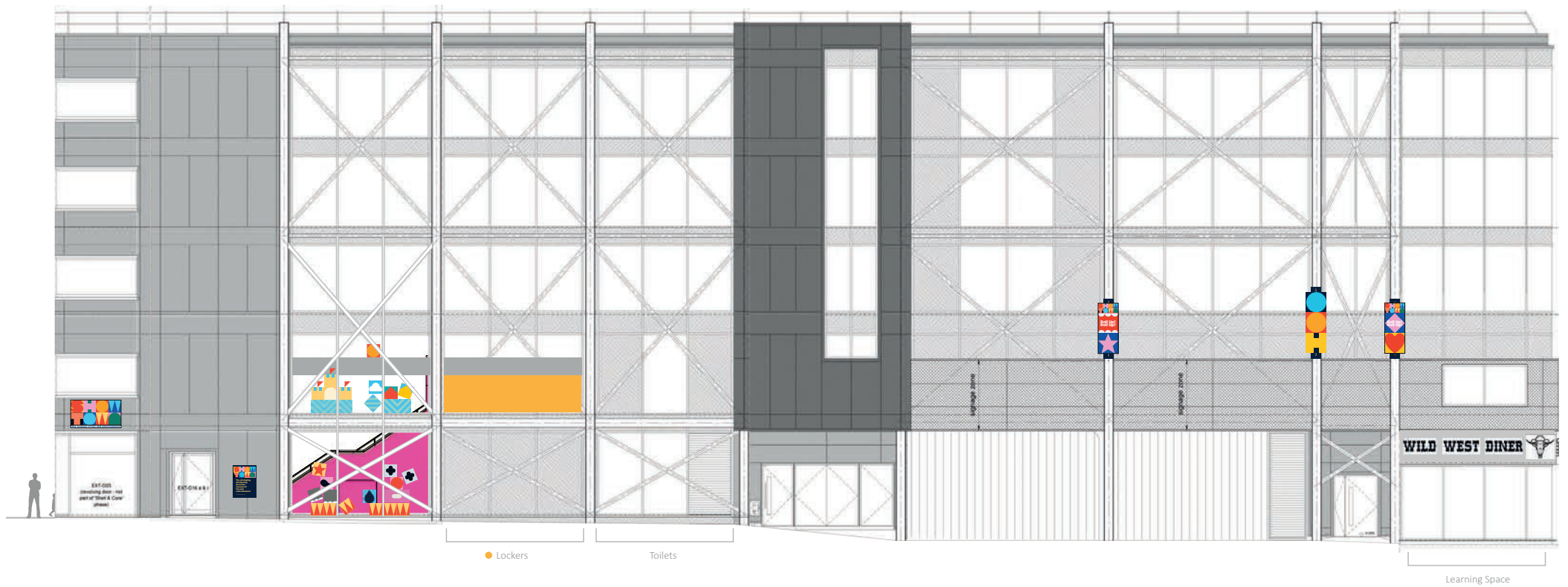
PLACE  
MARQUE  
+

*true*North

Proposed external signage  
Adelaide St West

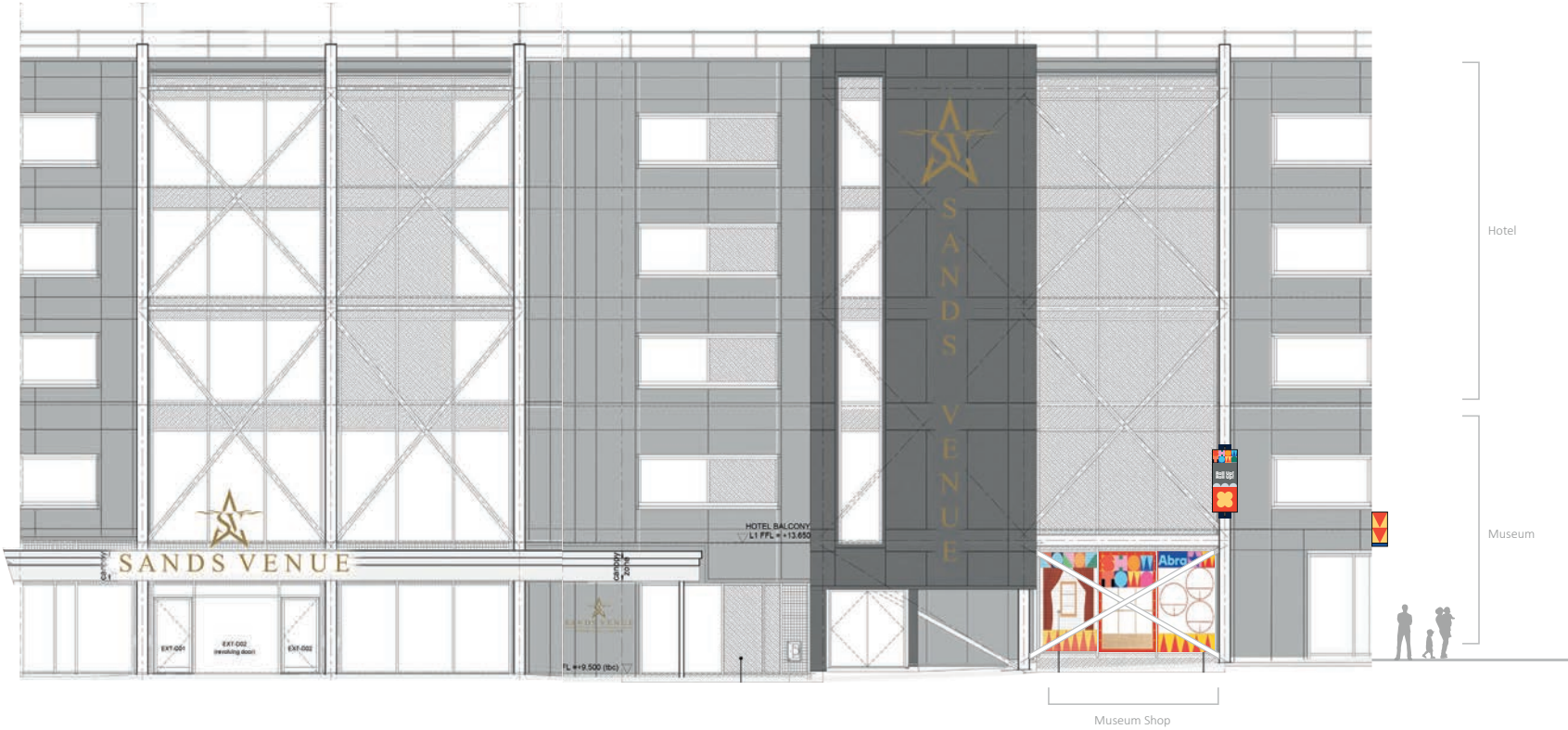


Adelaide St West View



EX 3  
High Level Fascia

Proposed external signage  
Bank Hey Street



EX 3  
High Level Fascia

Proposed external signage  
Bank Hey Street



Existing



Proposed

Proposed external signage  
Adelaide St West



Existing



Proposed

# PLACE MARQUE +

Design Intent Drawing

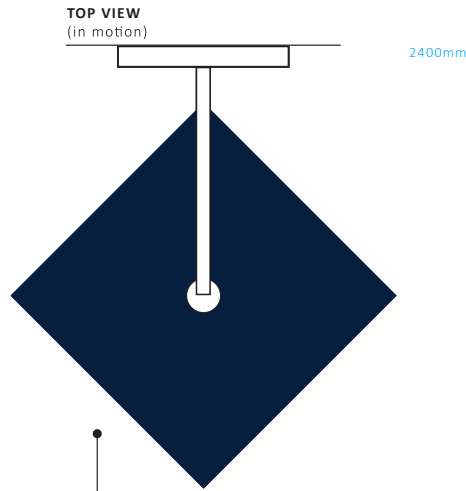
**Project** Showtown Museum, Blackpool  
**Sign Type** EX 3a - High Level Fascia

**Scale** 1:10 @ A2

**NOTE**

Aluminium stacked boxes to be powder coated with marine grade finish. Masked and painted graphics to be applied to four faces.

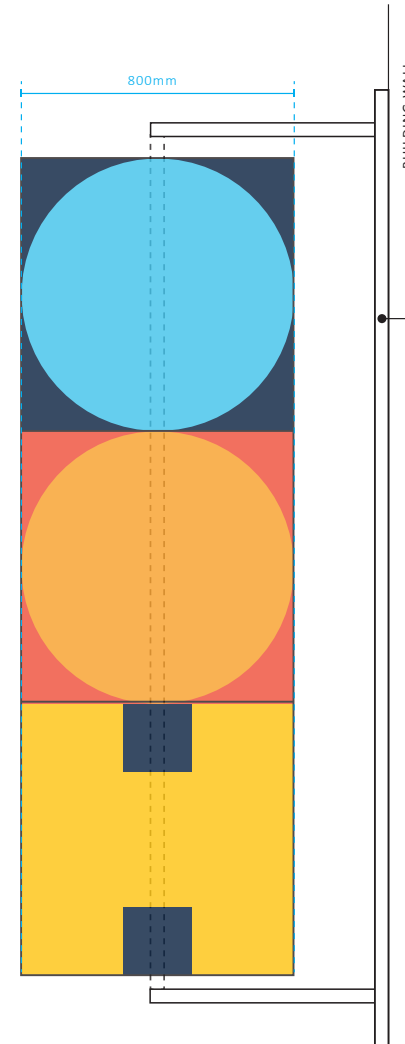
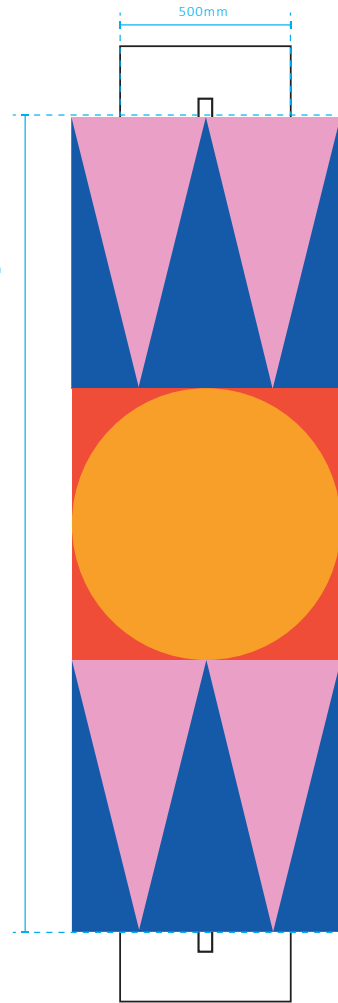
Final sizes of support fixings to be confirmed by manufacturer to ensure buildability and durability



**STACKED BOXES**  
Cubes to start spinning as a set as the wind blows.



**3D VISUAL OF SIGN**



**BRACKET**

C frame to project to allow for a structure central rod to run through x3 cubes to connect the stack

Need to allow gap between boxes and building wall to ensure the boxes don't hit the wall when spinning.

**General Notes**

- This drawing is provided to exhibit design arrangement only
- Shop drawings supplied by the manufacturer and approved by Wayfinding Consultant and Client are to provide the final specification document for this sign. Shop drawings to indicate fabrication and fastening methods approved by a qualified engineer. Alternative construction that does not change the intended appearance of sign will be considered but will require full client approval
- All sign content shown is for visualisation purposes only. All final content will be unique to it's location, approved artwork will be supplied to manufacturer by Wayfinding Consultant
- All dimensions are in millimetres - do not scale from this drawing
- Manufacturer to ensure stability and build ability aspects suitable to local ground conditions and wall structures

PLACE MARQUE +

Design Intent Drawing

Project Showtown Museum, Blackpool  
Sign Type EX 3b - High Level Fascia

Scale 1:10 @ A2

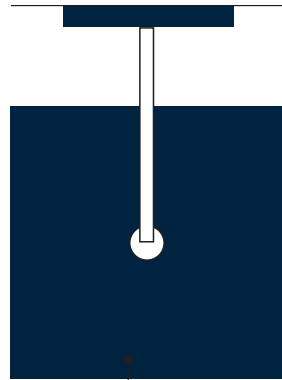
**NOTE**  
Aluminium sign to be powder coated with marine grade finish. Masked and painted graphics to be applied to three faces.

Final sizes of support fixings to be confirmed by manufacturer to ensure buildability and durability



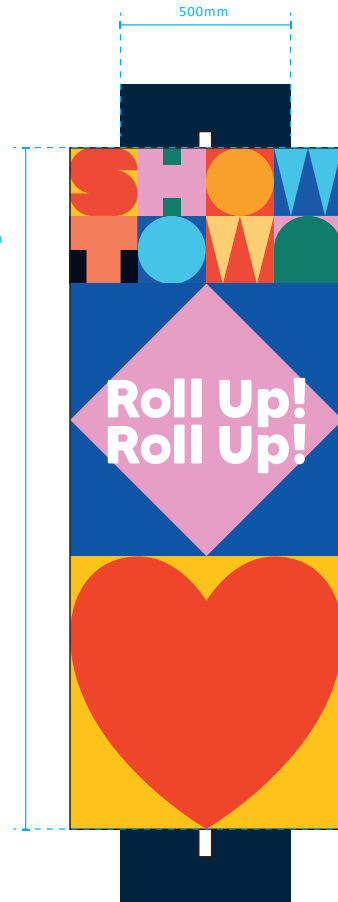
3D VISUAL OF SIGN

TOP VIEW



Sign to stay static and not spin in wind

2000mm



FRONT VIEW



SIDE VIEW

BUILDING WALL

**BRACKET**

C frame to project to allow for a structure central rod to run through the centre.

Need to allow gap between sign and building wall to allow wind to pass through so as not to damage the sign

**General Notes**

- This drawing is provided to exhibit design arrangement only
- Shop drawings supplied by the manufacturer and approved by Wayfinding Consultant and Client are to provide the final specification document for this sign. Shop drawings to indicate fabrication and fastening methods approved by a qualified engineer. Alternative construction that does not change the intended appearance of sign will be considered but will require full client approval
- All sign content shown is for visualisation purposes only. All final content will be unique to it's location, approved artwork will be supplied to manufacturer by Wayfinding Consultant
- All dimensions are in millimetres - do not scale from this drawing
- Manufacturer to ensure stability and build ability aspects suitable to local ground conditions and wall structures



# PLACE MARQUE +

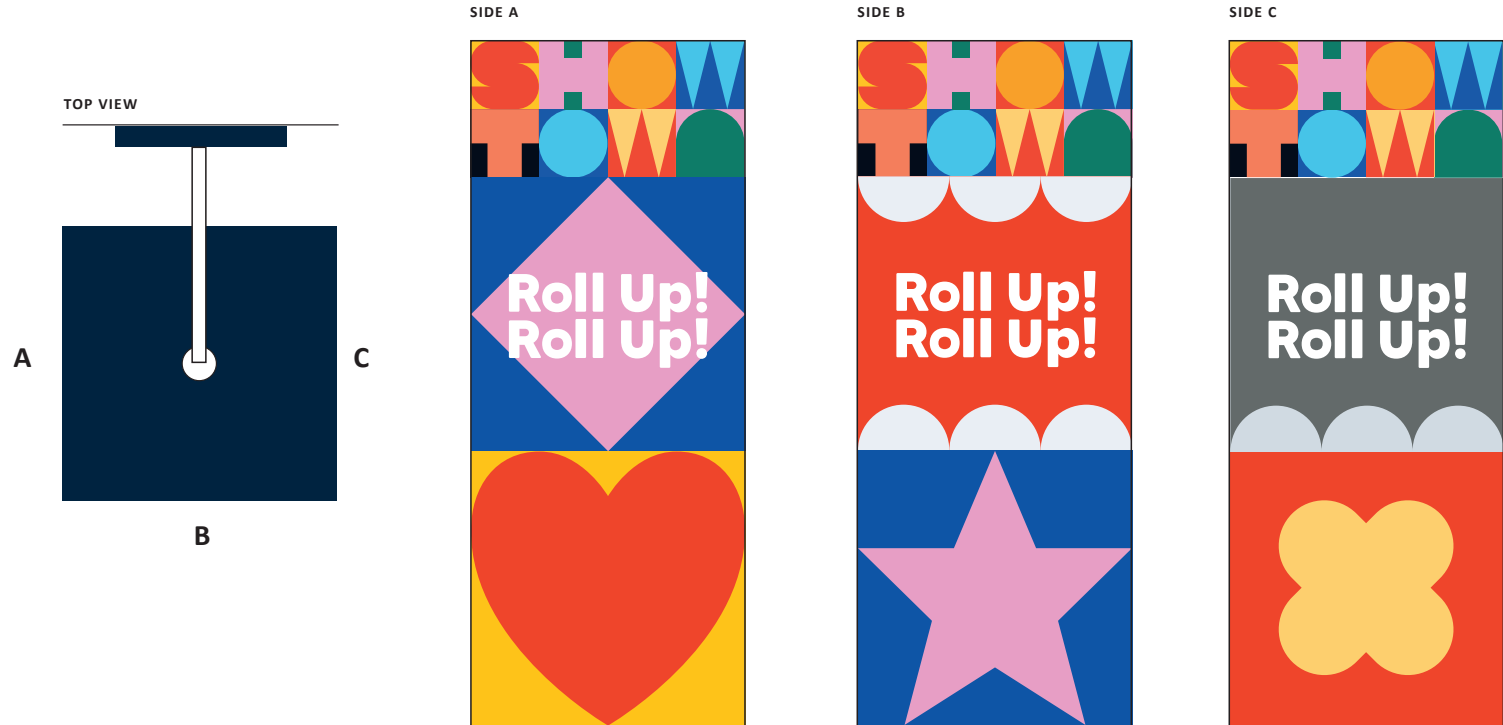
Design Intent Drawing

**Project** Showtown Museum, Blackpool  
**Sign Type** EX 3b - High Level Fascia

**Scale** 1:10 @ A2

**NOTE**  
Aluminium sign to be powder coated with marine grade finish. Masked and painted graphics to be applied to three faces.

Final sizes of support fixings to be confirmed by manufacturer to ensure buildability and durability

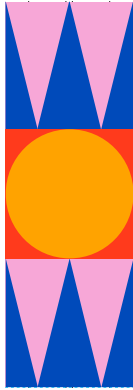



### General Notes




- This drawing is provided to exhibit design arrangement only
- Shop drawings supplied by the manufacturer and approved by Wayfinding Consultant and Client are to provide the final specification document for this sign. Shop drawings to indicate fabrication and fastening methods approved by a qualified engineer. Alternative construction that does not change the intended appearance of sign will be considered but will require full client approval
- All sign content shown is for visualisation purposes only. All final content will be unique to it's location, approved artwork will be supplied to manufacturer by Wayfinding Consultant
- All dimensions are in millimetres - do not scale from this drawing
- Manufacturer to ensure stability and build ability aspects suitable to local ground conditions and wall structures



Sign Colour References

Sign Type	Visual	CMYK Codes
<p><b>EX ST3a</b> High Level Fascia</p>		<p><b>'W'</b> Pink: 1, 41, 0, 0 Blue: 90, 68, 0, 0</p> <p><b>'O'</b> Red: 0, 78, 74, 0 Orange: 0, 41, 100, 0</p>
		<p><b>'O'</b> Dark Blue: 100, 76, 12, 70 Light Blue: 60, 0, 3, 0</p> <p><b>'O'</b> Red: 0, 78, 74, 0 Orange: 0, 41, 100, 0</p> <p><b>'H'</b> Dark Blue: 100, 76, 12, 70 Yellow: 0, 12, 98, 0</p>

Sign Colour References

Sign Type	Visual	CMYK Codes
<p><b>EX ST3b</b> High Level Fascia</p>		<p><b>'SHOWTOWN'</b> See earlier drawing</p> <p><b>'Roll Up!'</b> Blue: 90, 68, 0, 0 Pink: 1, 41, 0, 0</p> <p><b>Heart</b> Yellow: 0, 12, 98, 0 Red: 0, 78, 74, 0</p>
		<p><b>'SHOWTOWN'</b> See earlier drawing</p> <p><b>'Roll Up!'</b> Red: 0, 78, 74, 0 White: 0, 0, 0, 0</p> <p><b>Star</b> Blue: 90, 68, 0, 0 Pink: 1, 41, 0, 0</p>
		<p><b>'SHOWTOWN'</b> See earlier drawing</p> <p><b>'Roll Up!'</b> Dark Grey: 30, 20, 19, 58 Grey: 10, 3, 1, 0</p> <p><b>Flower</b> Red: 0, 78, 74, 0 Yellow: 0, 12, 60, 0</p>