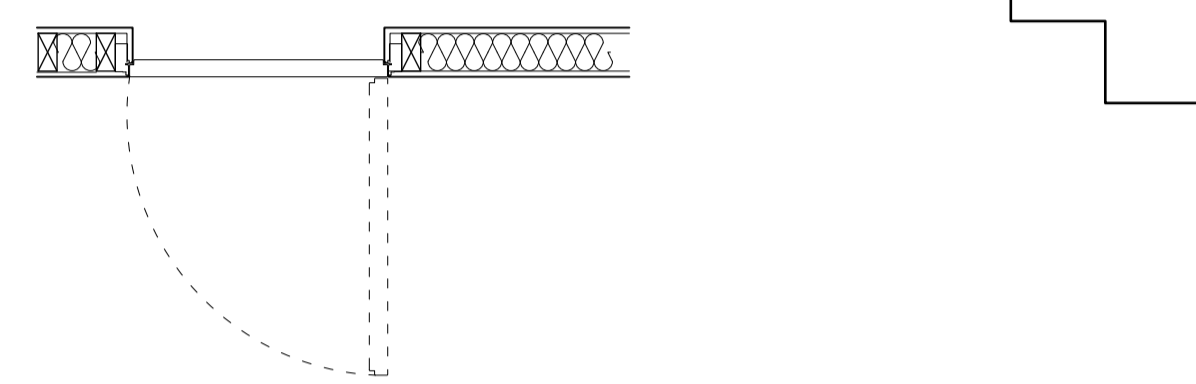
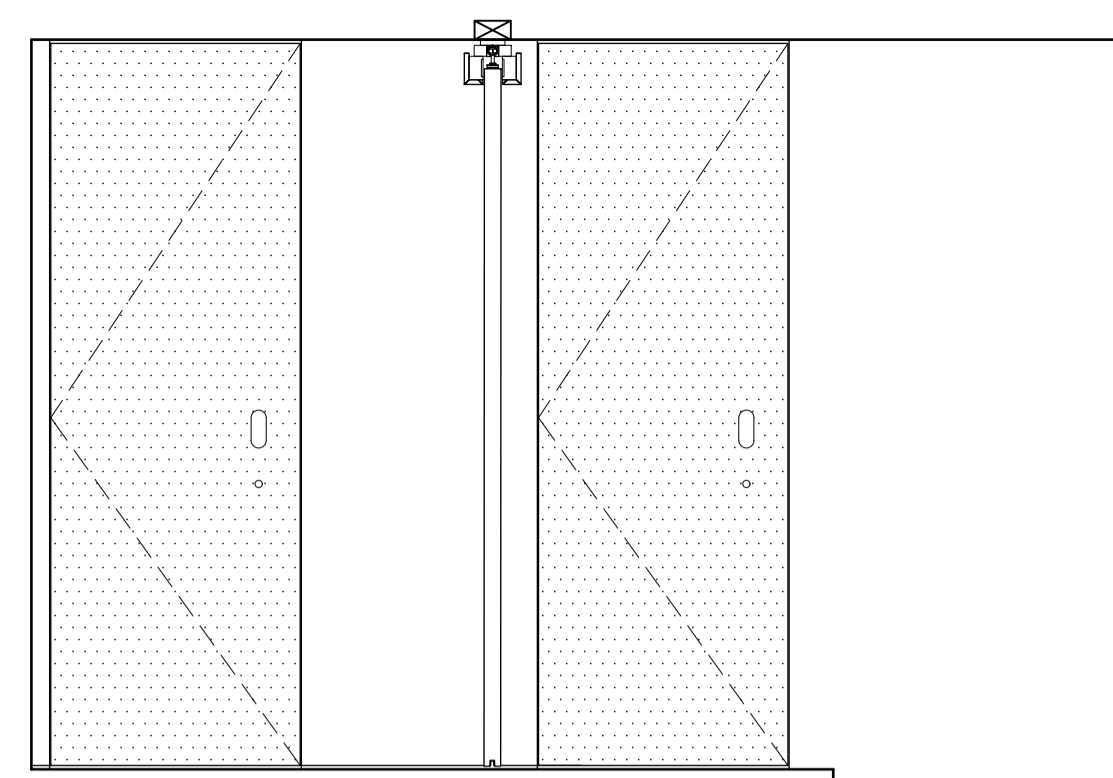
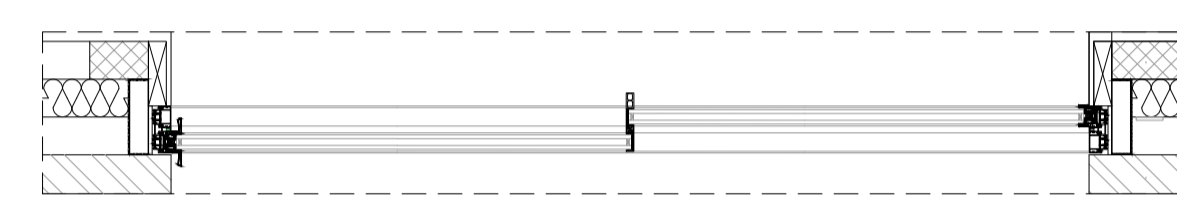
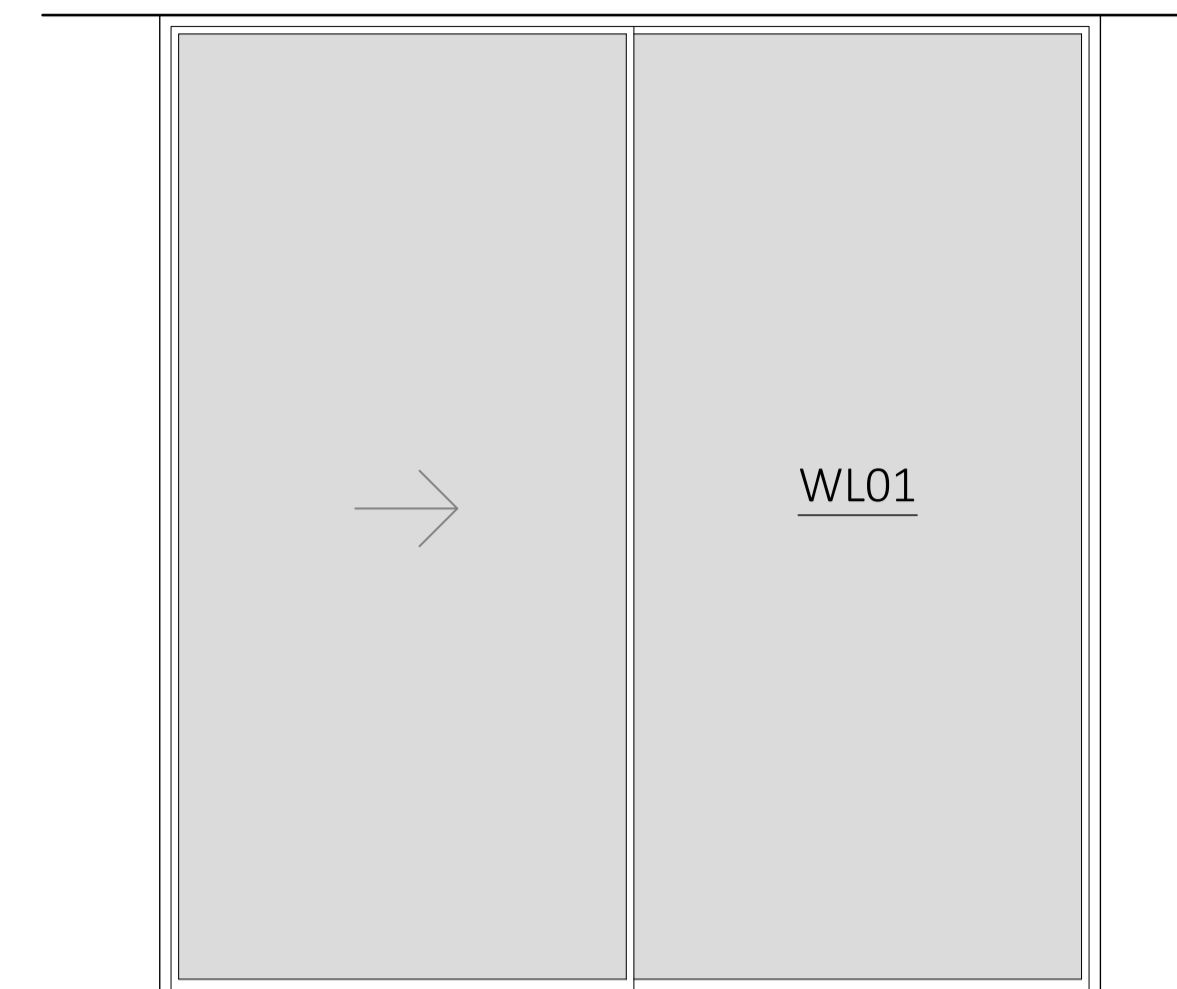


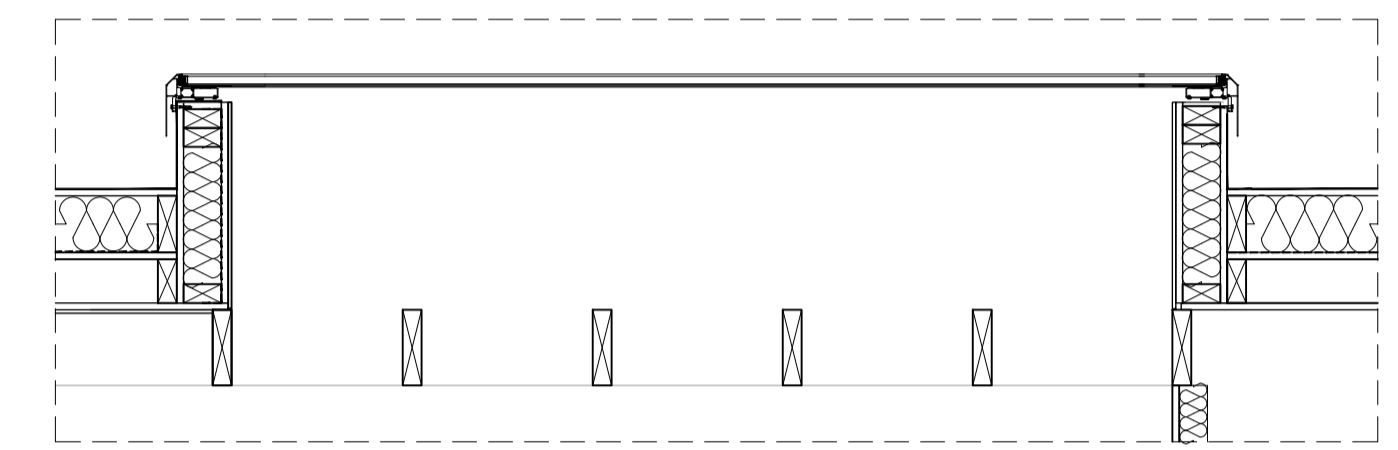
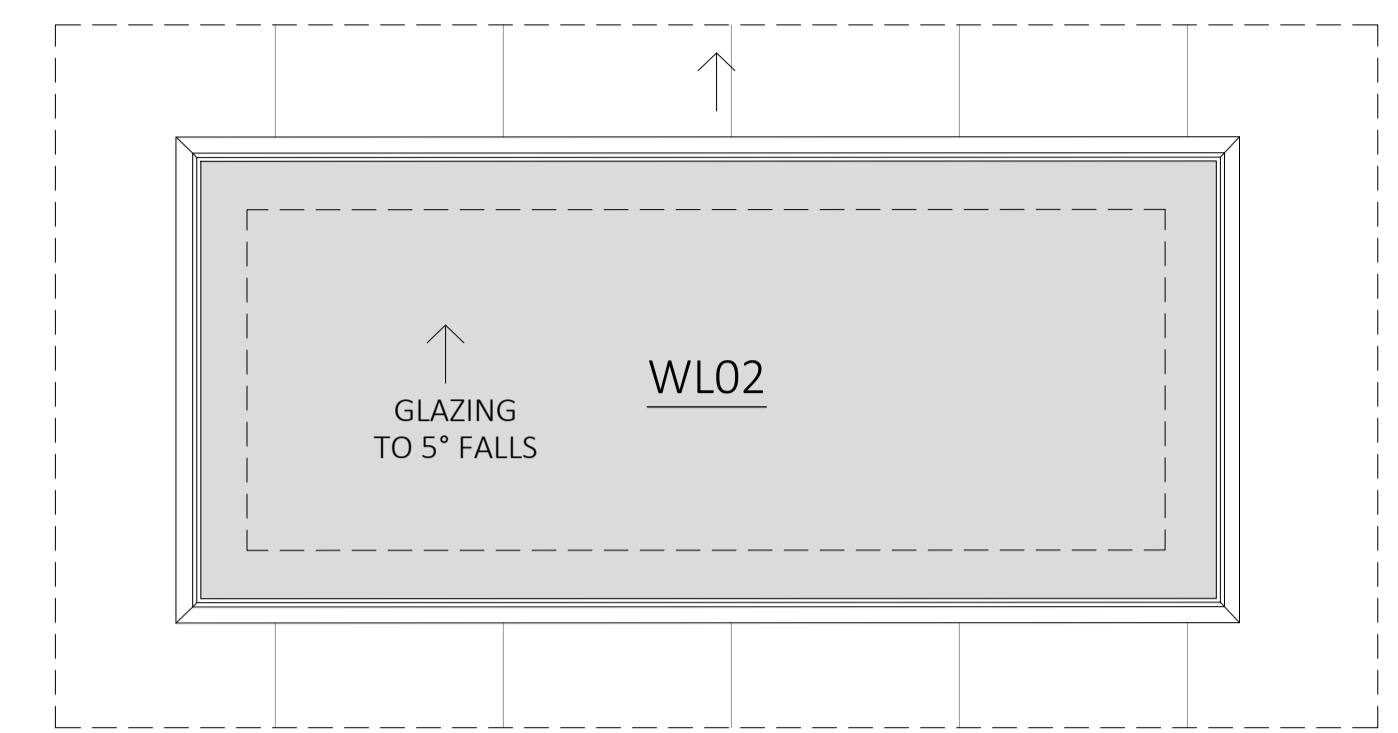
FOUR PANEL DOUBLE DOORS
 LOWER GROUND FLOOR GUEST BEDROOM
 FD30
 PANELLING AND MOULDING TO MATCH EXISTING DOORS
 ARCHITRAVE TO MATCH EXISTING
 DOOR KNOBS
 SKIRTING TO MATCH EXISTING
 FINISH TO MATCH EXISTING
 PARLIAMENT HINGES
 2 X RECESSED SLIDE/TOWER BOLTS
 1 X LATCH SET
 QUANTITY: 1
 DL01



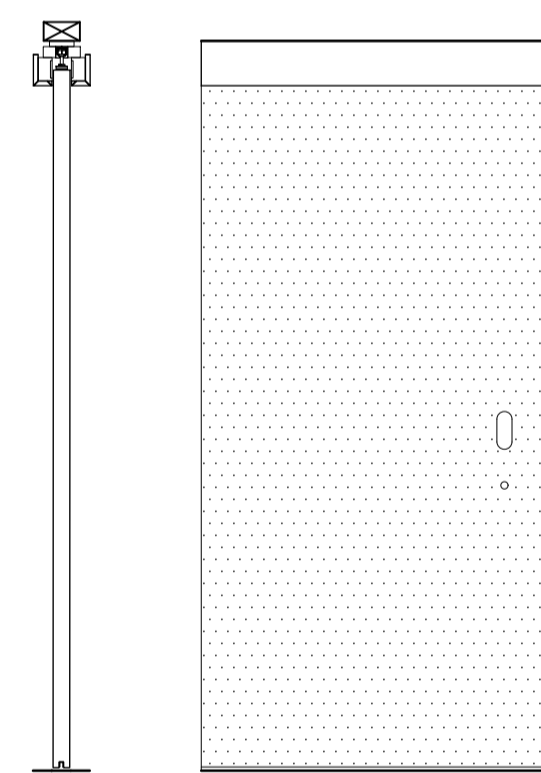
660 x 1910 ECLISSE SYNTESIS FLUSH HINGED SINGLE DOOR
 LOWER GROUND FLOOR WC, UTILITY ROOM
 DIMENSIONS TO BE TAKEN ON SITE
 SHADOW GAP SKIRTING
 PAINTED FINISH TO MATCH WALLS
 FLUSH RECESSED HANDLES
 NO ARCHITRAVE
 THUMB TURN LOCK
 QUANTITY: 2
 DL02, DL03



NEW ALUMINIUM FRAMED GLAZED SLIDING DOOR
 ALUMINIUM FRAME
 CLEAR ARGON FILLED DOUBLE GLAZING (TOUGHENED)
 SOLAR CONTROL
 POLYESTER POWDER COATED
 RAL COLOUR 7021
 1.6 U-VALUE
 QUANTITY: 1
 WL01



NEW ALUMINIUM FRAMED ROOF LIGHT
 FIXED
 POLYESTER POWDER COATED
 RAL COLOUR 7021
 CLEAR DOUBLE GLAZING, TOUGHENED LAMINATED
 SOLAR CONTROL
 2.2 U-VALUE
 QUANTITY: 1
 WL02



FLUSH FLAT PANEL DOOR
 LOWER GROUND KITCHEN
 FD30
 PORTMAN POCKET DOOR SYSTEM
 ARCHITRAVE FREE
 RECESSED PULL HANDLES AND EDGE FINGER PULLS
 SHADOW GAP SKIRTING
 PAINTED FINISH
 QUANTITY: 1
 DL03

