

DOOR and WINDOW Schedule

Fairfield House, 43-47 High Street, Newmarket

DOORS

Existing doors – Retail unit



Front door with display passage to High Street.
To be unaltered.



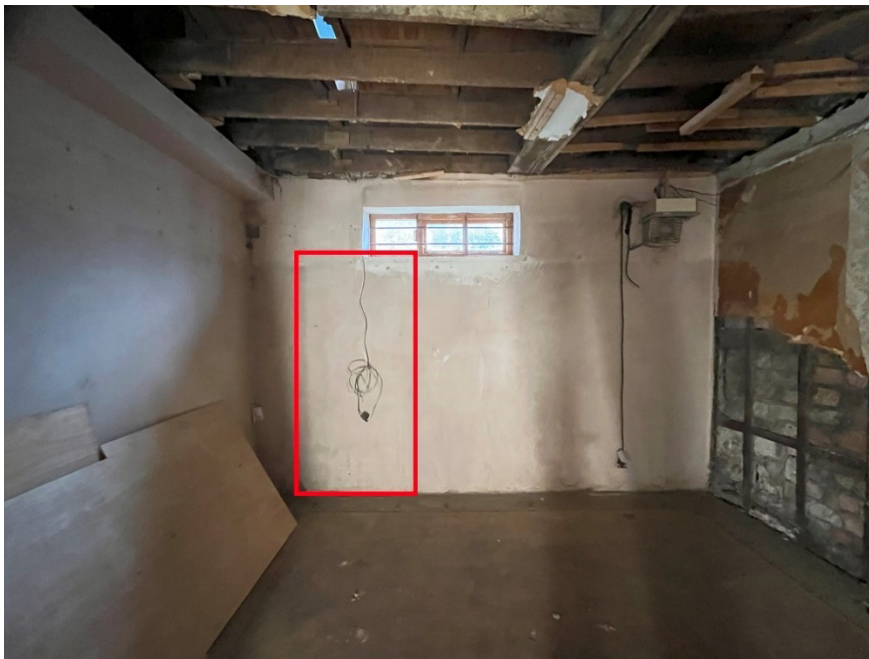
Second door in same passage from front and rear. To be upgraded to better quality door.

Main door to shop from High Street.

To be unaltered.



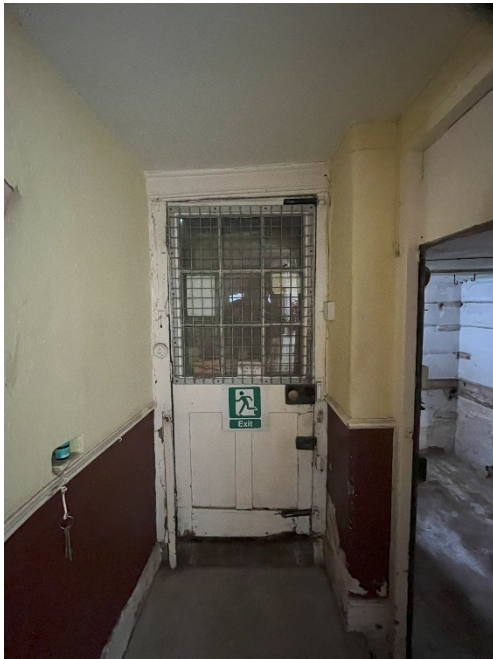
Rear door from retail to rear to be blocked.



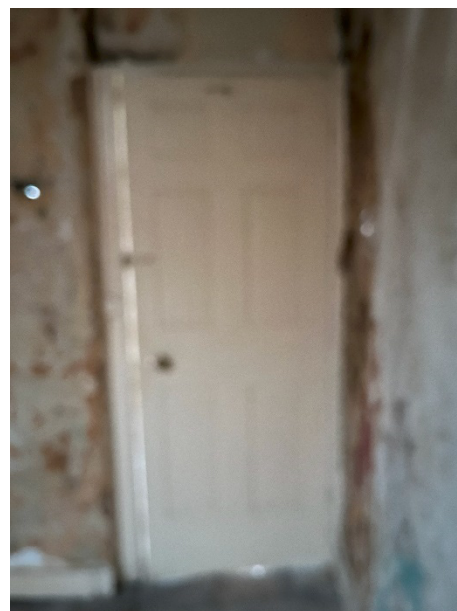
Position of new rear door from retail to rear of building.

External appearance proposed as a stable door. Painted green as for exiting exit and windows to rear.

Existing rear door. To be retained and modified as outward opening final exit.



First Floor Doors – note many have been supplemented with fire regulation features



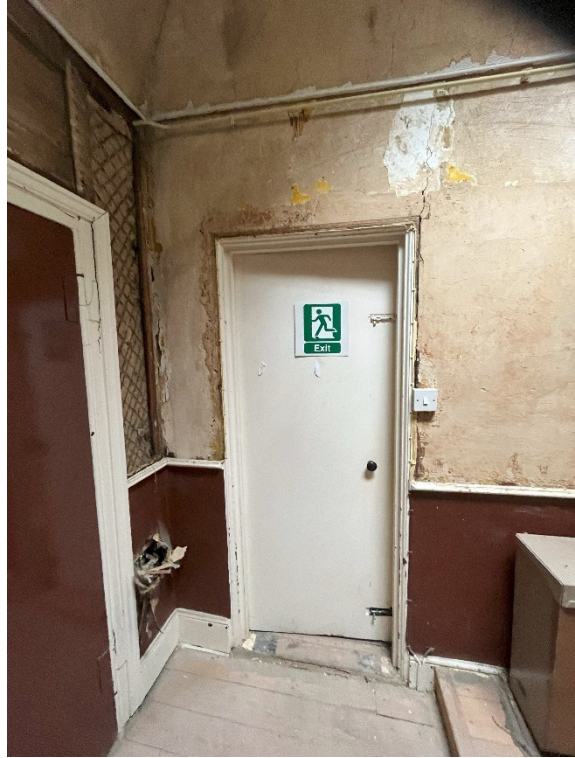
Panelled door to kitchen – to be retained and modified to comply with Fire Regulations.



Door from kitchen area to rear bedroom. To be replaced with panelled door.



Door to existing side stairs to retail shop below. Opening to be blocked up, stairs removed.



Door from landing (communal entrance) to inner hall of first floor flat. Panelled to one side but modified to the other. Replace with panelled door consistent with fire regulations (SD 30).



Existing door from inner hall of flat 1 to stairwell to floor above. To be blocked, new access from landing area.

Door to sitting room – to be retained.



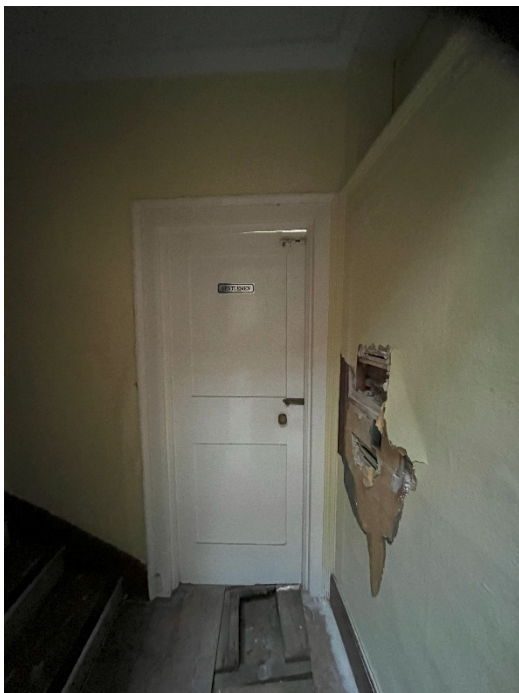
Door to bedroom 1 – retained.



Door from inner hall first floor flat to corridor adjacent WC - proposed bathroom.
Replace with modern panel door.



Door from corridor to WC – remove both door and timber partition.



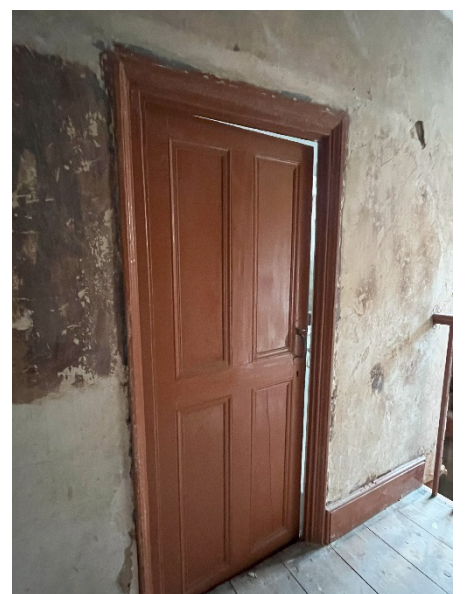
Second Floor



Door to bathroom area from Hall and stairs.

Retain.

Doors to sitting room, kitchen, bedroom. Retain all.



WINDOWS

All windows to the front elevation are to be repaired and re-installed with secondary glazing internally.



Rear Windows

Modern window to lower stair well. To be retained with secondary glazing.



Modern sash window to stairwell/landing area. Retain external appearance. Modify and adapt to a top hinged outward opening double glazed smoke vent.



Rear bedroom left hand window. Retain & modify to an opening window. Maintain full opening to bottom sash as means of escape. Secondary glazing, retain outward appearance.



Rear right hand window – repair and retain, secondary glazing internally.



Window to stairwell to 2nd floor.

Retain with secondary internal glazing.

Attic dormer window to bathroom area. Retain with secondary glazing.



Small window opposite (non-opening) – retain with secondary glazing.



Attic gable end window.

Repair sash, secondary glazing to interior.



November 2018