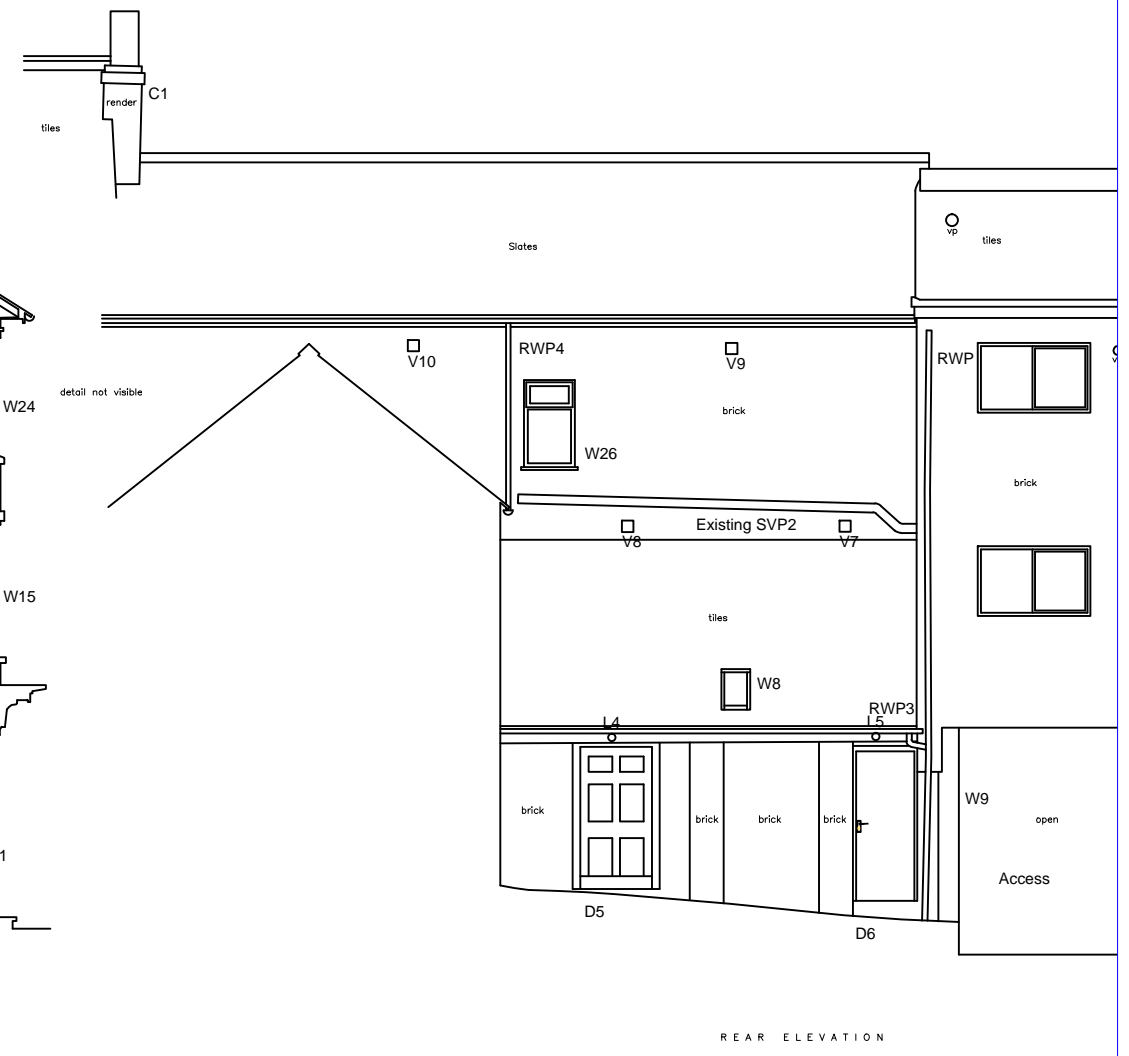
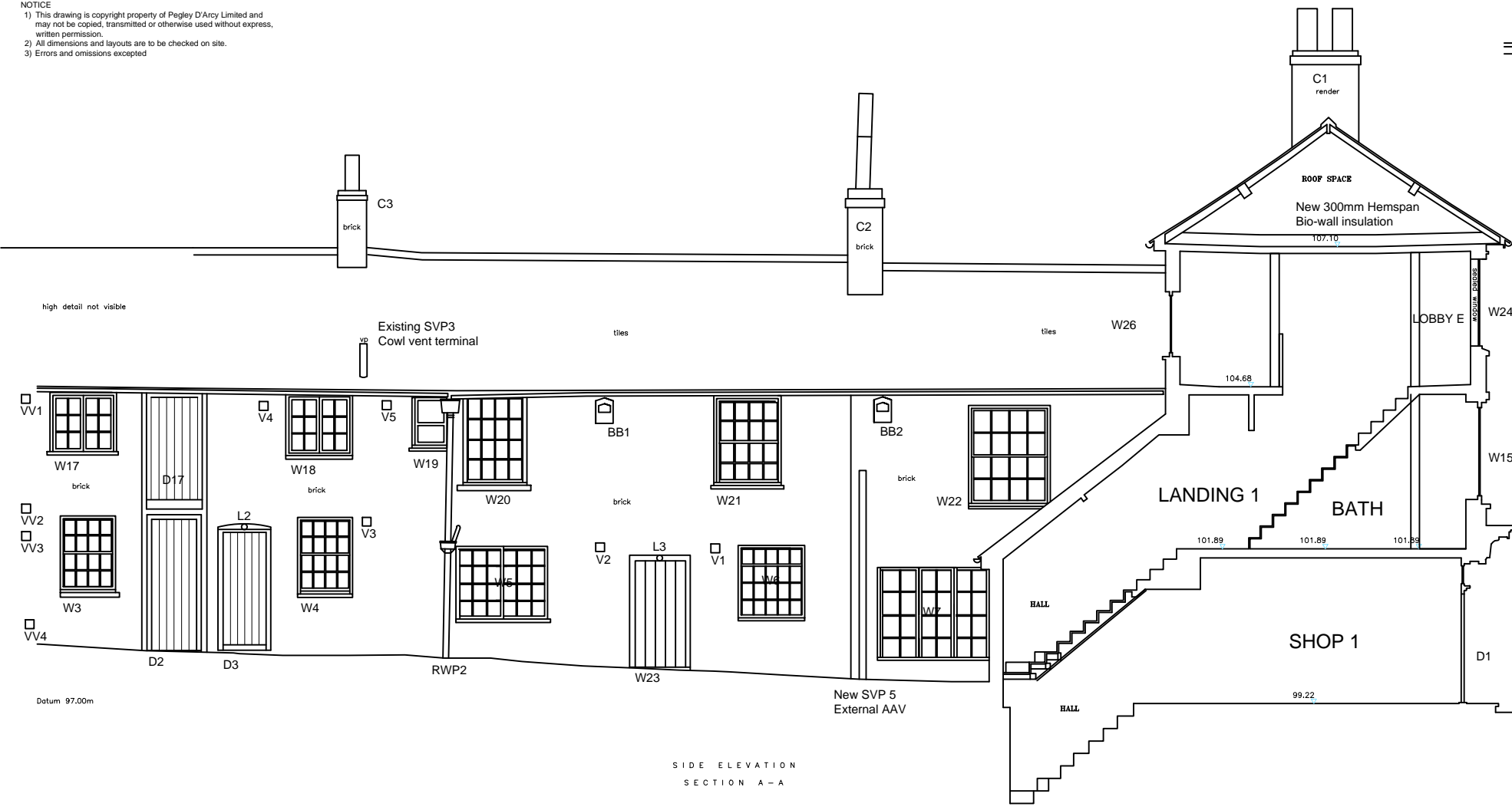
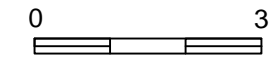


NOTICE
 1) This drawing is copyright property of Pegley D'Arcy Limited and may not be copied, transmitted or otherwise used without express, written permission.
 2) All dimensions and layouts are to be checked on site.
 3) Errors and omissions excepted



PROPOSALS

- L2-L5 4nr LEDvance Endura 10W security lights are to be set over external doors
167 x 109 x 63mm black units with PIR activation
All wiring and brackets fixed to timber frames
- V1-V10 Black aluminium louvres to extract vents
150 x 150mm frames screw fixed into walling
- VV1-VV4 Black aluminium louvres to void vents
150 x 150mm frames screw fixed into walling
- BB1-BB2 Bat boxes
Chillon Woodstone 290 x 440 x 90mm units
Set minimum 3m above ground level



19 January 2024
 1:100 @ A3
6640 - 43
 PROPOSAL ELEVATIONS 1:100
 1 WELL STREET
 BUCKINGHAM MK18 1EW
 ROYAL INSTITUTE OF BRITISH ARCHITECTS CHARTERED PRACTICE



78 YORK STREET, LONDON W1H 1DP
 T : 0207 112 7560 www.pegley-darcy.com M : 07889 657363
 © PEGLEY D'ARCY LIMITED CO.NR 02576330 REGISTERED IN LONDON