

EXISTING GROUND FLOOR
scale 1:50 @ A1 / 1:100 @ A3

Ref	Location	Photograph	Comments
01	Exterior Left Hand Side Shopfront		W1. Heritage style metal framed single glazed bay windows
02	Shopfront Entrance		DG01. Heritage style double glazed painted timber entrance doors
03	Exterior Right Hand Side Shopfront		W2. Heritage style metal framed single glazed bay windows
04	Ground Floor Level, Left Hand Side Shopfront		DG02. Modern interior shopfitting paneled door, raised floor window display
05	Ground Floor Level, Stair 3 Lobby Door		DG03. Painted timber modern leaf and a half fire escape door, within a decorative architrave
06	Ground Floor Level, 1st Lobby Door		DG04. Painted timber panel and glazed modern double doors, within a decorative architrave
07	Shop Entrance Partitioning		Partition. Timber glazed partition wall. Three glazed openings: Clear glass with no manifestation. Wall: Painted tongue and groove paneled wall
08	Ground Floor Level, Lobby Door To Sales Area		DG05. Painted timber panel and glazed modern double doors, within a modern architrave
09	Ground Floor Level, Door To Store Room Underneath Staircase 3		DG06. Painted modern timber door, with decorative door frame
10	Ground Floor Level, Sales Area Electrical Cupboard		DG07. Electrical cupboard- painted double door, within a modern architrave
11	Ground Floor Level, Doors To Basement, Between Staircase 2 & Lift		DG08. Plain timber painted double doors, on concealed hinges. Architrave built into the design of staircase 2.
12	Lift Door		Lift. Double metal lift doors

Ref	Location	Photograph	Comments
13	Skylights		Skylights. 5 x Modern Velux windows
14	Skylight		Skylight. Modern Velux window
15	Ground Floor Level, Rear Storage Door		DG09. Painted timber door, with heritage decorative architrave
16	Ground Floor Level, Staircase One		DG10. Concealed timber painted storage door
17	Ground Floor Level, Staircase One		DG11. Painted timber modern door, within a modern architrave

GENERAL NOTES

Contractor to check all dimensions on site that relate to these drawings and to report any discrepancies to Designer prior to construction. All services to conform to Local Authorities, BCO and Environmental Health requirements. All structure to Structural Engineer's details, Local Authority and BCO requirements. All construction and materials to comply with current Building and Fire Regulations.

Contractor shall comply with: The CDM 2015 Regulations, Fire Precautions, Code of Practice for the Prevention of Fires on Construction sites and Buildings undergoing Refurbishment, Code of Welfare conditions as outlined in the National Working Rule Agreement for the Building Industry and any Statutory Rules and Orders relating to the provision and maintenance of welfare and safety measures and amenities for all work people employed on site.

All works, products, materials and installations to comply with manufacturer's printed recommendations and instructions and to the relevant British Standards. This drawing is to be read in conjunction with the Schedule of Works and Specification.

Do not scale this drawing, all dimensions to be verified on site, copyright of this drawing remains with lustedgreen LLP.

GENERAL WORKMANSHIP NOTES:
Works to be carried out in accordance with requirements within the Project Particulars, specification and schedules to include the following:

WORKMANSHIP SKILLS -
Operatives should be appropriately skilled and experienced for the type and quality of work, with Construction Skills Certification Scheme.

QUALITY OF PRODUCTS -
Supply of each product should be from the same source or manufacturer. Whole quantity of each product required to complete the Works should be consistent in kind, size, quality and overall appearance. Tolerances, where critical, measure a sufficient quantity to determine compliance.

QUALITY OF EXECUTION -
Generally, fix, apply, install or lay products securely, accurately, plumb, neatly and in alignment. Do not use different colour batches where they can be seen together. Check on-site dimensions. Finished work must not be defective, e.g. not damaged, disfigured, dirty, faulty, or out of tolerance. Adjust joints open to view so they are even and regular.

RELATED WORK -
Provide all trades with necessary details of related types of work. Before starting each new type or section of work ensure previous related work is, appropriately complete, in accordance with the project document, to a suitable standard, in a suitable condition to receive the new work and ensure all necessary preparatory work has been carried out.

MANUFACTURER'S RECOMMENDATIONS/ INSTRUCTIONS -
Comply with manufacturer's printed recommendations and instructions current on the date of the invitation to tender.

BRITISH STANDARDS -
Comply with all relevant British Standards and other standards relative to the trade and or product.

SAMPLES -
To be submitted for all materials and finishes and proposed ironmongery types for approval prior to ordering. Undertake or arrange to suit the Works programme.

SETTING OUT -
General tolerances (maximum): To BS 5606, tables 1 and 2. The Contractor is to be responsible for the execution of all setting out drawing to co-ordinate and execute the whole of the works.

THIS DRAWING SHOWS THE DESIGN INTENT. THE CONTRACTOR SHALL BE RESPONSIBLE FOR THE DETAILED CONSTRUCTION DESIGN AND DETAIL, SUITABILITY OF MATERIALS AND STRUCTURAL STABILITY OF ALL ITEMS SHOWN ON THIS DRAWING. CONSTRUCTION/ FABRICATION DRAWINGS TO BE SUBMITTED TO DESIGNER FOR REVIEW PRIOR TO MANUFACTURE.

ALSO REFER TO SCHEDULES FOR FINISHES, DOORS, IRONMONGERY, SANITARYWARE AND FF&E

REV	DATE	COMMENTS

Trailfinders
CLIENT

24 High Street, Windsor
Berks, SL4 1LH
PROJECT NAME LG22/58
PROJECT NUMBER

Existing Ground Floor Door & Window
Photographic Schedule
DRAWING TITLE

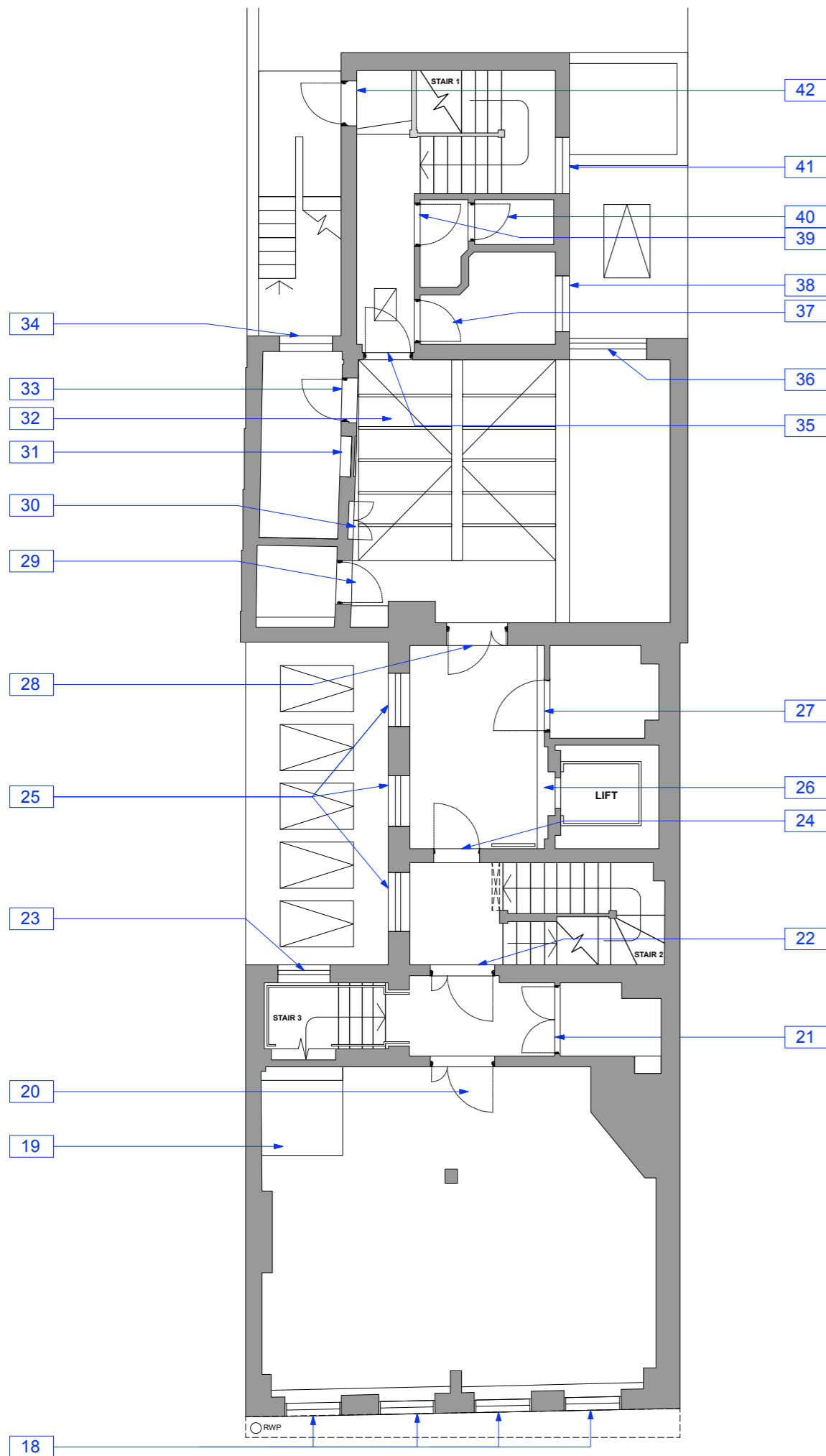
1:50 SCALE @ A1 1:100 SCALE @ A3

120 DRAWING NUMBER REV

lustedgreen

020 3176 2770
www.lustedgreen.com
studio@lustedgreen.com
Cargo Works | 1-2 Hatfields | London | SE1 9PG

PLANNING ISSUE



EXISTING FIRST FLOOR
scale 1:50 @ A1 / 1:100 @ A3

Ref	Location	Photograph	Comments
18	First Floor Front Windows		W3, W4, W5, W6. Heritage style single glazed timber sash windows
19	Stair Bulkhead		Staircase Bulkhead. Modern painted single glazed timber bulkhead located above staircase 3
20	First Floor Door To Front Sales Area		DF01 Painted timber leaf and a half fire door, within a plain architrave. Vision panel and molding to door
21	First Floor Electrical Riser Cupboard		DF02 Painted modern double leaf doors, and modern architrave
22	First Floor Lobby Door		DF03. Painted timber leaf and a half within a modern architrave. Vision panel and molding to door
23	Stair 3 First Lobby Window		W6 Single glazed casement window, with side opening on the right hand side and an awning window in the left hand side. Beveled and Textured Glass Window and Metal Frame
24	First Floor Lift Lobby Door		DF04. Painted timber molded single leaf door, with vision panel and decorative architrave
25	First Floor Lobby Windows		W7, W8, W9 Heritage style single glazed timber sash windows
26	Lift Door		Lift. Double metal lift doors
27	First Floor Accessible Wc Door		DF05 Painted timber molded single leaf door, within a decorative architrave
28	First Floor Door To Atrium		DF06. Painted timber leaf and a half fire door, within a modern architrave. Vision panel and molding to door
29	First Floor Office Door		DF07 Painted timber single leaf door and modern architrave
30	First Floor Atrium		DF08. Concealed Cupboard double leaf doors

Ref	Location	Photograph	Comments
31	First Floor Atrium		Blocked in opening
32	First Floor Atrium		Conservatory roof. Modern PVC structure glazed roof with fixed windows to the left of the Atrium
33	First Floor, The Atrium/ Store		DF09 Painted timber single leaf door and modern architrave
34	First Floor, The Atrium/ Store		W10 Single glazed timber sash windows
35	First Floor, The Atrium/ Rear Lobby		DF10. Painted timber molded single leaf door, with vision panel and decorative architrave
36	First Floor, The Atrium		W11 Single glazed timber sash windows
37	First Floor, Kitchen Door		DF11 Painted timber single leaf door and modern architrave
38	First Floor, Kitchen Window		W12 Single glazed casement window with side openings on the left and right hand side. Georgian wired glass and Metal Frame
39	First Floor, Lobby/Wc		DF12 Painted timber single leaf door and decorative architrave
40	First Floor Wc Cubical		DF13 Painted timber single leaf door
41	First Floor Wc Cubical		W13 Single glazed casement window with side openings on the left and right hand side. Clear glass, and painted window cil
42	First Floor Fire Exit Door		DF14 Painted timber single leaf door fire escape door with vision panel, and painted architrave

GENERAL NOTES

Contractor to check all dimensions on site that relate to these drawings and to report any discrepancies to Designer prior to construction. All services to conform to Local Authorities, BCO and Environmental Health requirements. All structure to Structural Engineer's details, Local Authority and BCO requirements. All construction and materials to comply with current Building and Fire Regulations.

Contractor shall comply with: The CDM 2015 Regulations, Fire Precautions, Code of Practice for the Prevention of Fires on Construction sites and Buildings undergoing Refurbishment, Code of Welfare conditions as outlined in the National Working Rule Agreement for the Building Industry and any Statutory Rules and Orders relating to the provision and maintenance of welfare and safety measures and amenities for all work people employed on site.

All works, products, materials and installations to comply with manufacturer's printed recommendations and instructions and to the relevant British Standards. This drawing is to be read in conjunction with the Schedule of Works and Specification.

Do not scale this drawing, all dimensions to be verified on site, copyright of this drawing remains with lustedgreen LLP.

GENERAL WORKMANSHIP NOTES:
Works to be carried out in accordance with requirements within the Project Particulars, specification and schedules to include the following:

WORKMANSHIP SKILLS -
Operatives should be appropriately skilled and experienced for the type and quality of work, with Construction Skills Certification Scheme.

QUALITY OF PRODUCTS -
Supply of each product should be from the same source or manufacturer. Whole quantity of each product required to complete the Works should be consistent in kind, size, quality and overall appearance. Tolerances, where critical, measure a sufficient quantity to determine compliance.

QUALITY OF EXECUTION -
Generally, fix, apply, install or lay products securely, accurately, plumb, neatly and in alignment. Do not use different colour batches where they can be seen together. Check on-site dimensions. Finished work must not be defective, e.g. not damaged, disfigured, dirty, faulty, or out of tolerance. Adjust joints open to view so they are even and regular.

RELATED WORK -
Provide all trades with necessary details of related types of work. Before starting each new type or section of work ensure previous related work is, appropriately complete, in accordance with the project document, to a suitable standard, in a suitable condition to receive the new work and ensure all necessary preparatory work has been carried out.

MANUFACTURER'S RECOMMENDATIONS/ INSTRUCTIONS -
Comply with manufacturer's printed recommendations and instructions current on the date of the invitation to tender.

BRITISH STANDARDS -
Comply with all relevant British Standards and other standards relative to the trade and or product.

SAMPLES -
To be submitted for all materials and finishes and proposed ironmongery types for approval prior to ordering. Undertake or arrange to suit the Works programme.

SETTING OUT -
General tolerances (maximum): To BS 5606, tables 1 and 2. The Contractor is to be responsible for the execution of all setting out drawing to co-ordinate and execute the whole of the works.

THIS DRAWING SHOWS THE DESIGN INTENT. THE CONTRACTOR SHALL BE RESPONSIBLE FOR THE DETAILED CONSTRUCTION DESIGN AND DETAIL, SUITABILITY OF MATERIALS AND STRUCTURAL STABILITY OF ALL ITEMS SHOWN ON THIS DRAWING. CONSTRUCTION/ FABRICATION DRAWINGS TO BE SUBMITTED TO DESIGNER FOR REVIEW PRIOR TO MANUFACTURE.

ALSO REFER TO SCHEDULES FOR FINISHES, DOORS, IRONMONGERY, SANITARYWARE AND FF&E

REV	DATE	COMMENTS

Trailfinders
CLIENT
24 High Street, Windsor
Berks, SL4 1LH
PROJECT NAME LG22/58
PROJECT NUMBER

Existing First Floor Door & Window
Photographic Schedule.
DRAWING TITLE

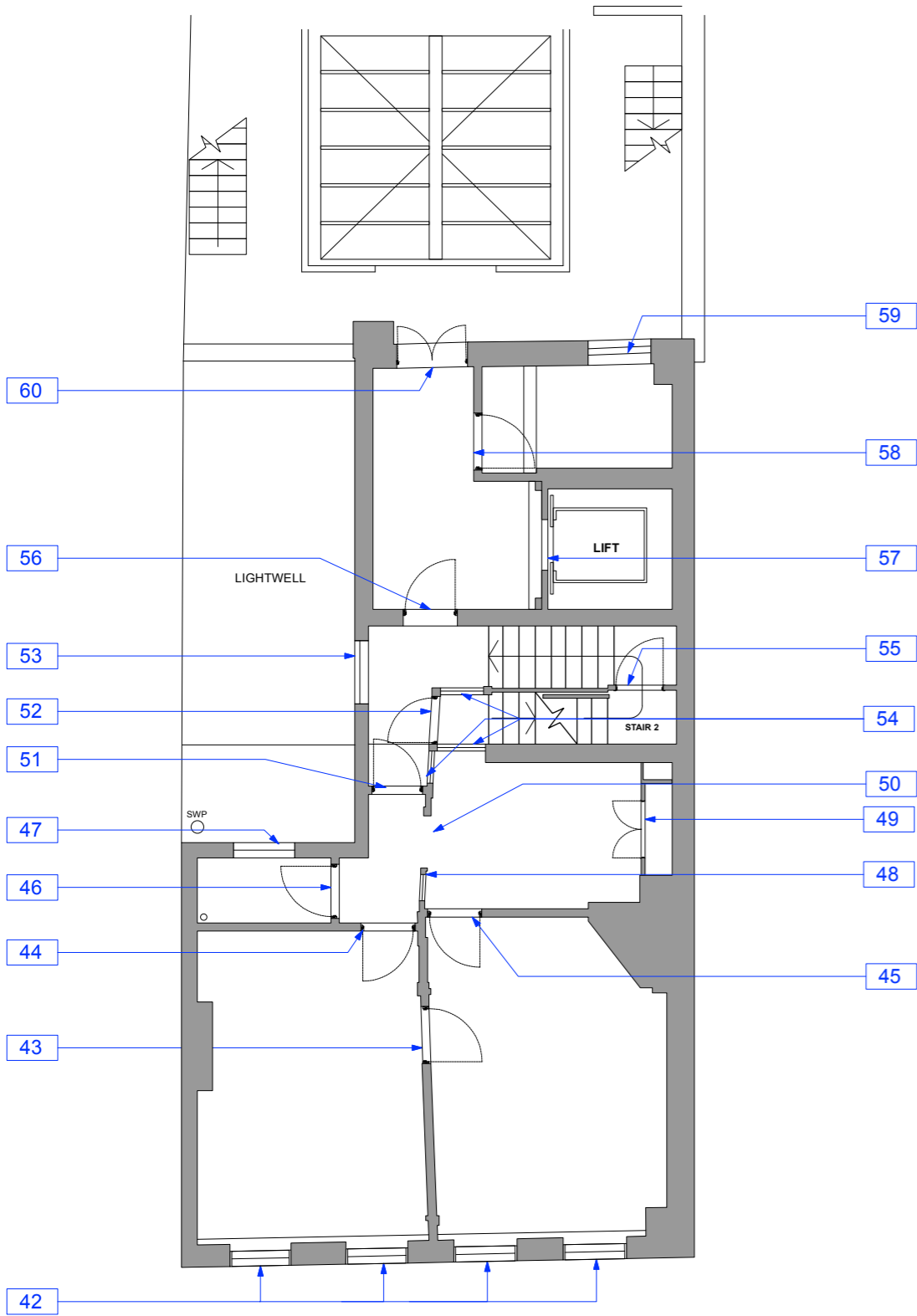
1:50 SCALE @ A1 1:100 SCALE @ A3

121 DRAWING NUMBER REV

lustedgreen

020 3176 2770
www.lustedgreen.com
studio@lustedgreen.com
Cargo Works | 1-2 Hatfields | London | SE1 9PG

PLANNING ISSUE



EXISTING SECOND FLOOR
scale 1:50 @ A1 / 1:100 @ A3

Ref	Location	Photograph	Comments
42	Second Floor Front Windows		W14, W15, W16, W17. Heritage style single glazed timber sash windows
43	Second Floor Door		DS01 Painted timber single leaf door within a painted modern architrave
44	Second Floor Door		DS02 Painted timber single leaf door within a painted modern architrave
45	Second Floor Door		DS03 Painted timber single leaf door within a painted modern architrave
46	Second Floor Wc Door		DS04 Painted timber single leaf door within a painted modern architrave
47	Second Floor Wc Window		W18 Single glazed casement window, with side opening on the left hand side and an awning window in the left hand side. Beveled and Textured Glass Window and Metal Frame. Terracotta tiled window cill
48	Second Floor Partition Screen		Partition. Timber glazed partition wall. Clear single glazed panel to the top half of the screen
49	Second Floor Electrical Cupboard Doors		DS05 Painted timber cupboard doors
50	Second Floor Partition Screen		Door to existing partition screen removed
51	Second Floor Stair Lobby Door		DS06 Painted timber single leaf door within a painted modern architrave
52	Second Floor Staircase Door		DS07 Painted timber single leaf door with vision panel a painted modern architrave
53	Second Floor Lobby Window		W19 Single glazed casement window, with double opening and fixed window on the top. Painted window cill

Ref	Location	Photograph	Comments
54	Second Floor Stair Lobby		Partition Screen. Timber glazed partition walls. Clear single glazed panel to the top half of the screen, solid at the base
55	Second Floor Staircase Door		DS08 Painted timber single leaf door with vision panel a painted modern architrave
56	Second Floor Lift Lobby Door		DS09 Painted timber single leaf door within a painted heritage architrave
57	Second Floor Lift Door		Lift. Double metal lift doors
58	Second Floor Store Room Door		DS10 Painted timber single leaf door and a painted modern architrave
59	Second Floor window		W20 Heritage style single glazed timber sash window
60	Second fire exit door		DS11 Painted timber glazed double leaf fire escape doors, and painted architrave

GENERAL NOTES

Contractor to check all dimensions on site that relate to these drawings and to report any discrepancies to Designer prior to construction. All services to conform to Local Authorities, BCO and Environmental Health requirements. All structure to Structural Engineer's details, Local Authority and BCO requirements. All construction and materials to comply with current Building and Fire Regulations.

Contractor shall comply with: The CDM 2015 Regulations, Fire Precautions, Code of Practice for the Prevention of Fires on Construction sites and Buildings undergoing Refurbishment, Code of Welfare conditions as outlined in the National Working Rule Agreement for the Building Industry and any Statutory Rules and Orders relating to the provision and maintenance of welfare and safety measures and amenities for all work people employed on site.

All works, products, materials and installations to comply with manufacturer's printed recommendations and instructions and to the relevant British Standards. This drawing is to be read in conjunction with the Schedule of Works and Specification.

Do not scale this drawing, all dimensions to be verified on site, copyright of this drawing remains with lustedgreen LLP.

GENERAL WORKMANSHIP NOTES:
Works to be carried out in accordance with requirements within the Project Particulars, specification and schedules to include the following:

WORKMANSHIP SKILLS -
Operatives should be appropriately skilled and experienced for the type and quality of work, with Construction Skills Certification Scheme.

QUALITY OF PRODUCTS -
Supply of each product should be from the same source or manufacturer. Whole quantity of each product required to complete the Works should be consistent in kind, size, quality and overall appearance. Tolerances, where critical, measure a sufficient quantity to determine compliance.

QUALITY OF EXECUTION -
Generally, fix, apply, install or lay products securely, accurately, plumb, neatly and in alignment. Do not use different colour batches where they can be seen together. Check on-site dimensions. Finished work must not be defective, e.g. not damaged, disfigured, dirty, faulty, or out of tolerance. Adjust joints open to view so they are even and regular.

RELATED WORK -
Provide all trades with necessary details of related types of work. Before starting each new type or section of work ensure previous related work is, appropriately complete, in accordance with the project document, to a suitable standard, in a suitable condition to receive the new work and ensure all necessary preparatory work has been carried out.

MANUFACTURER'S RECOMMENDATIONS/ INSTRUCTIONS -
Comply with manufacturer's printed recommendations and instructions current on the date of the invitation to tender.

BRITISH STANDARDS -
Comply with all relevant British Standards and other standards relative to the trade and or product.

SAMPLES -
To be submitted for all materials and finishes and proposed ironmongery types for approval prior to ordering. Undertake or arrange to suit the Works programme.

SETTING OUT -
General tolerances (maximum): To BS 5606, tables 1 and 2. The Contractor is to be responsible for the execution of all setting out drawing to co-ordinate and execute the whole of the works.

THIS DRAWING SHOWS THE DESIGN INTENT. THE CONTRACTOR SHALL BE RESPONSIBLE FOR THE DETAILED CONSTRUCTION DESIGN AND DETAIL, SUITABILITY OF MATERIALS AND STRUCTURAL STABILITY OF ALL ITEMS SHOWN ON THIS DRAWING. CONSTRUCTION/ FABRICATION DRAWINGS TO BE SUBMITTED TO DESIGNER FOR REVIEW PRIOR TO MANUFACTURE.

ALSO REFER TO SCHEDULES FOR FINISHES, DOORS, IRONMONGERY, SANITARYWARE AND FF&E

REV	DATE	COMMENTS

Trailfinders
CLIENT
24 High Street, Windsor
Berks, SL4 1LH
PROJECT NAME LG22/58
PROJECT NUMBER

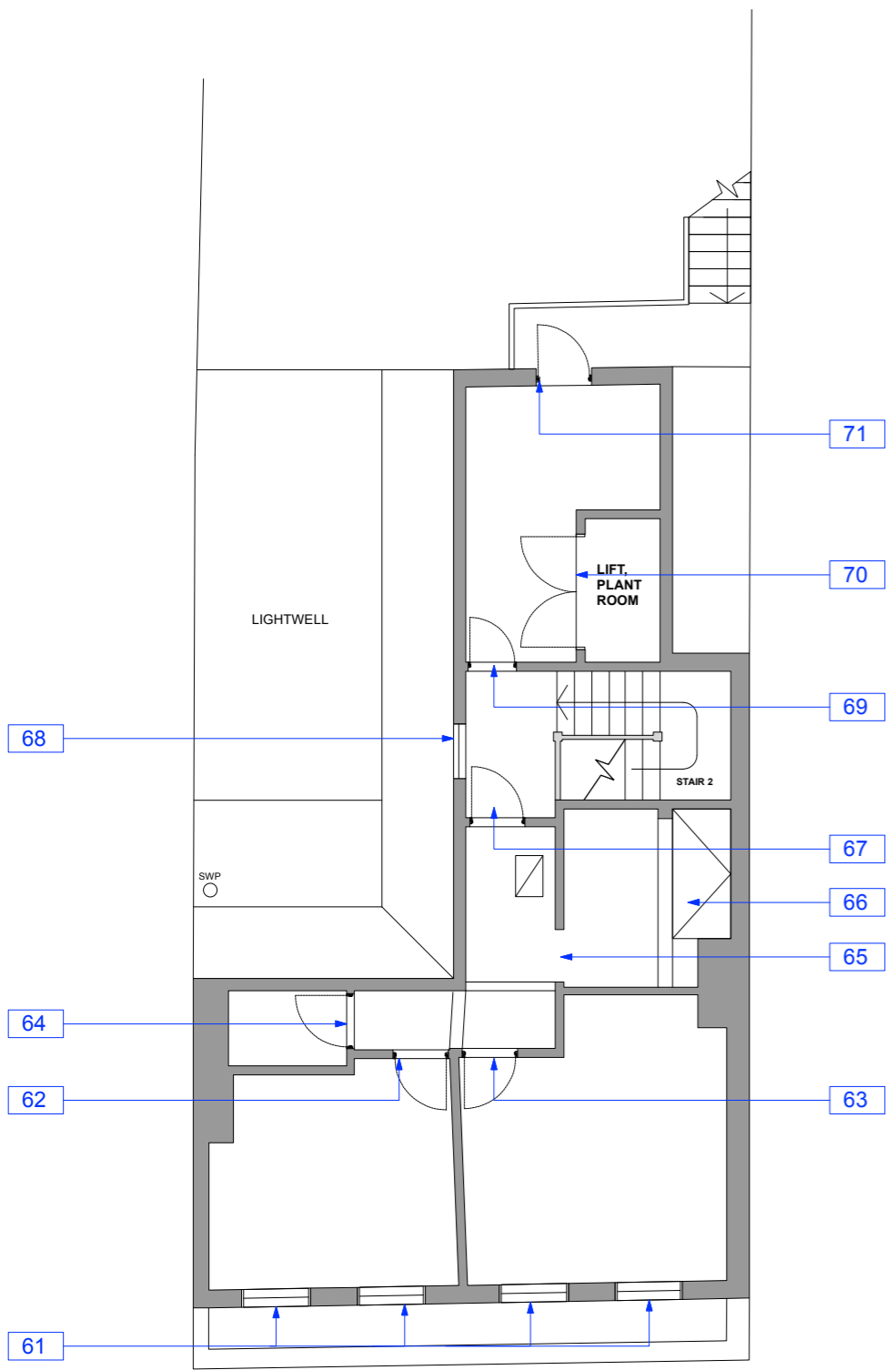
Existing Second Floor Door & Window
Photographic Schedule
DRAWING TITLE

1:50 SCALE @ A1 1:100 SCALE @ A3

122 DRAWING NUMBER REV

lustedgreen

PLANNING ISSUE



EXISTING THIRD FLOOR
scale 1:50 @ A1 / 1:100 @ A3

Ref	Location	Photograph	Comments
61	Third Floor Front Windows		W21, W22, W23, W24. Heritage style single glazed timber sash windows
62	Third Floor Door		DT01 Painted timber single leaf door within a painted heritage style architrave
63	Third Floor Door		DT02 Painted timber single leaf door within a painted heritage style architrave
64	Third Floor WC Door		DT03 Painted timber single leaf door within a painted heritage style architrave
65	Third Floor Store Room Opening		Door to store room
66	Third Floor Skylight		Skylight. Modern Velux window
67	Third Floor Lobby Door		DT04 Painted timber single leaf door within a painted heritage style architrave
68	Third Floor Lobby Window		W25 Single glazed casement window with side openings on the left and right hand side. Clear Glass
69	Third Kitchen Door		DT05 Painted timber single leaf door within a painted heritage style architrave
70	Third Floor Lift Plant Room Door		Lift Plant Room Door. Painted timber cupboard double doors
71	Third Floor Fire Exit Door		DT06 Painted timber single leaf door fire escape and painted architrave

GENERAL NOTES

Contractor to check all dimensions on site that relate to these drawings and to report any discrepancies to Designer prior to construction. All services to conform to Local Authorities, BCO and Environmental Health requirements. All structure to Structural Engineer's details, Local Authority and BCO requirements. All construction and materials to comply with current Building and Fire Regulations.

Contractor shall comply with: The CDM 2015 Regulations, Fire Precautions, Code of Practice for the Prevention of Fires on Construction sites and Buildings undergoing Refurbishment, Code of Welfare conditions as outlined in the National Working Rule Agreement for the Building Industry and any Statutory Rules and Orders relating to the provision and maintenance of welfare and safety measures and amenities for all work people employed on site.

All works, products, materials and installations to comply with manufacturer's printed recommendations and instructions and to the relevant British Standards. This drawing is to be read in conjunction with the Schedule of Works and Specification.

Do not scale this drawing, all dimensions to be verified on site, copyright of this drawing remains with lustedgreen LLP.

GENERAL WORKMANSHIP NOTES:
Works to be carried out in accordance with requirements within the Project Particulars, specification and schedules to include the following:

WORKMANSHIP SKILLS -
Operatives should be appropriately skilled and experienced for the type and quality of work, with Construction Skills Certification Scheme.

QUALITY OF PRODUCTS -
Supply of each product should be from the same source or manufacturer. Whole quantity of each product required to complete the Works should be consistent in kind, size, quality and overall appearance. Tolerances, where critical, measure a sufficient quantity to determine compliance.

QUALITY OF EXECUTION -
Generally, fix, apply, install or lay products securely, accurately, plumb, neatly and in alignment. Do not use different colour batches where they can be seen together. Check on-site dimensions. Finished work must not be defective, e.g. not damaged, disfigured, dirty, faulty, or out of tolerance. Adjust joints open to view so they are even and regular.

RELATED WORK -
Provide all trades with necessary details of related types of work. Before starting each new type or section of work ensure previous related work is, appropriately complete, in accordance with the project document, to a suitable standard, in a suitable condition to receive the new work and ensure all necessary preparatory work has been carried out.

MANUFACTURER'S RECOMMENDATIONS/ INSTRUCTIONS -
Comply with manufacturer's printed recommendations and instructions current on the date of the invitation to tender.

BRITISH STANDARDS -
Comply with all relevant British Standards and other standards relative to the trade and or product.

SAMPLES -
To be submitted for all materials and finishes and proposed ironmongery types for approval prior to ordering. Undertake or arrange to suit the Works programme.

SETTING OUT -
General tolerances (maximum): To BS 5606, tables 1 and 2. The Contractor is to be responsible for the execution of all setting out drawing to co-ordinate and execute the whole of the works.

THIS DRAWING SHOWS THE DESIGN INTENT. THE CONTRACTOR SHALL BE RESPONSIBLE FOR THE DETAILED CONSTRUCTION DESIGN AND DETAIL, SUITABILITY OF MATERIALS AND STRUCTURAL STABILITY OF ALL ITEMS SHOWN ON THIS DRAWING. CONSTRUCTION/ FABRICATION DRAWINGS TO BE SUBMITTED TO DESIGNER FOR REVIEW PRIOR TO MANUFACTURE.

ALSO REFER TO SCHEDULES FOR FINISHES, DOORS, IRONMONGERY, SANITARYWARE AND FF&E

REV	DATE	COMMENTS

Trailfinders
CLIENT
24 High Street, Windsor
Berks, SL4 1LH
PROJECT NAME LG22/58
PROJECT NUMBER

Existing Third Floor Door & Window
Photographic Schedule
DRAWING TITLE

1:50 SCALE @ A1 1:100 SCALE @ A3

123 DRAWING NUMBER REV

lustedgreen

PLANNING ISSUE