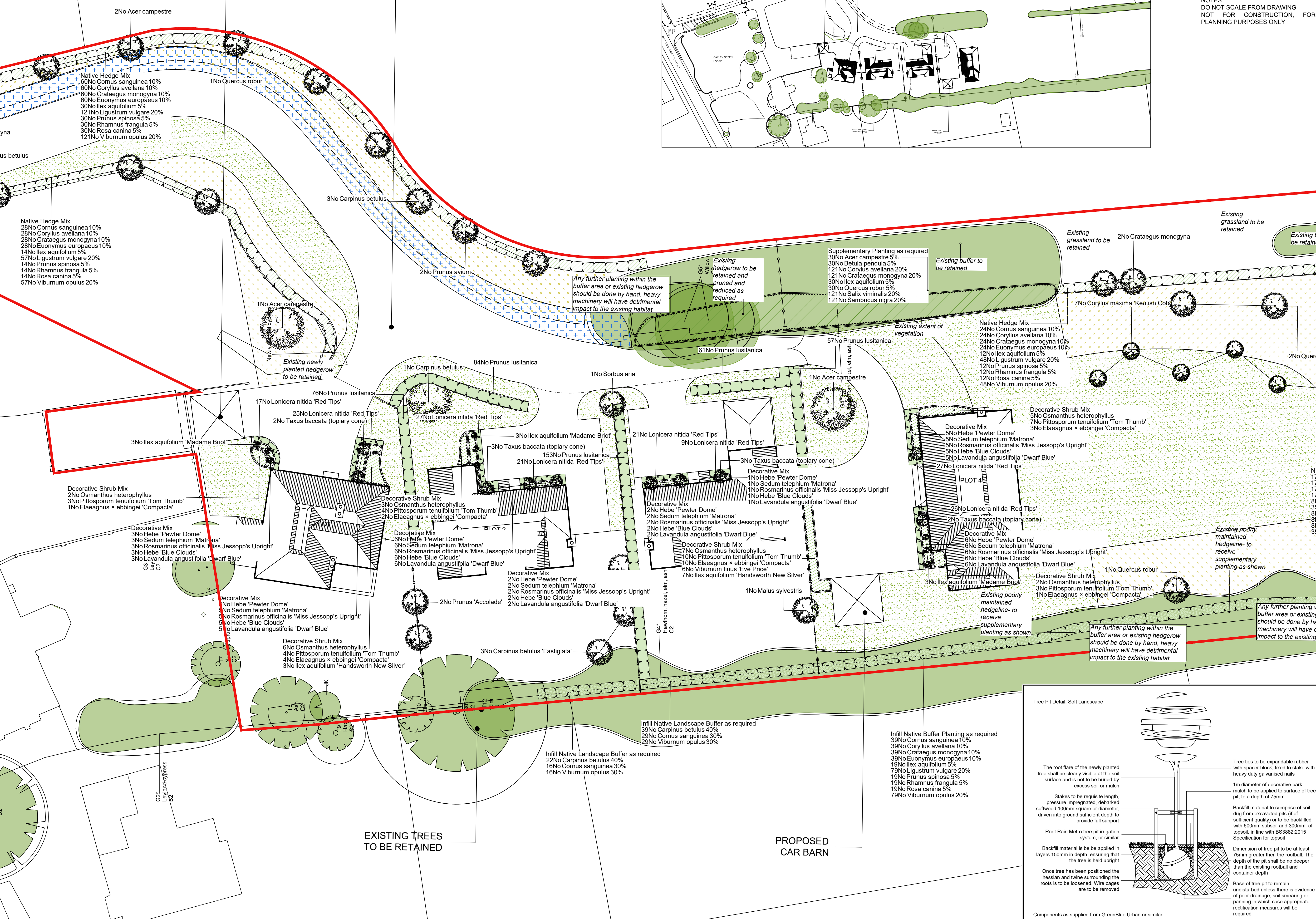
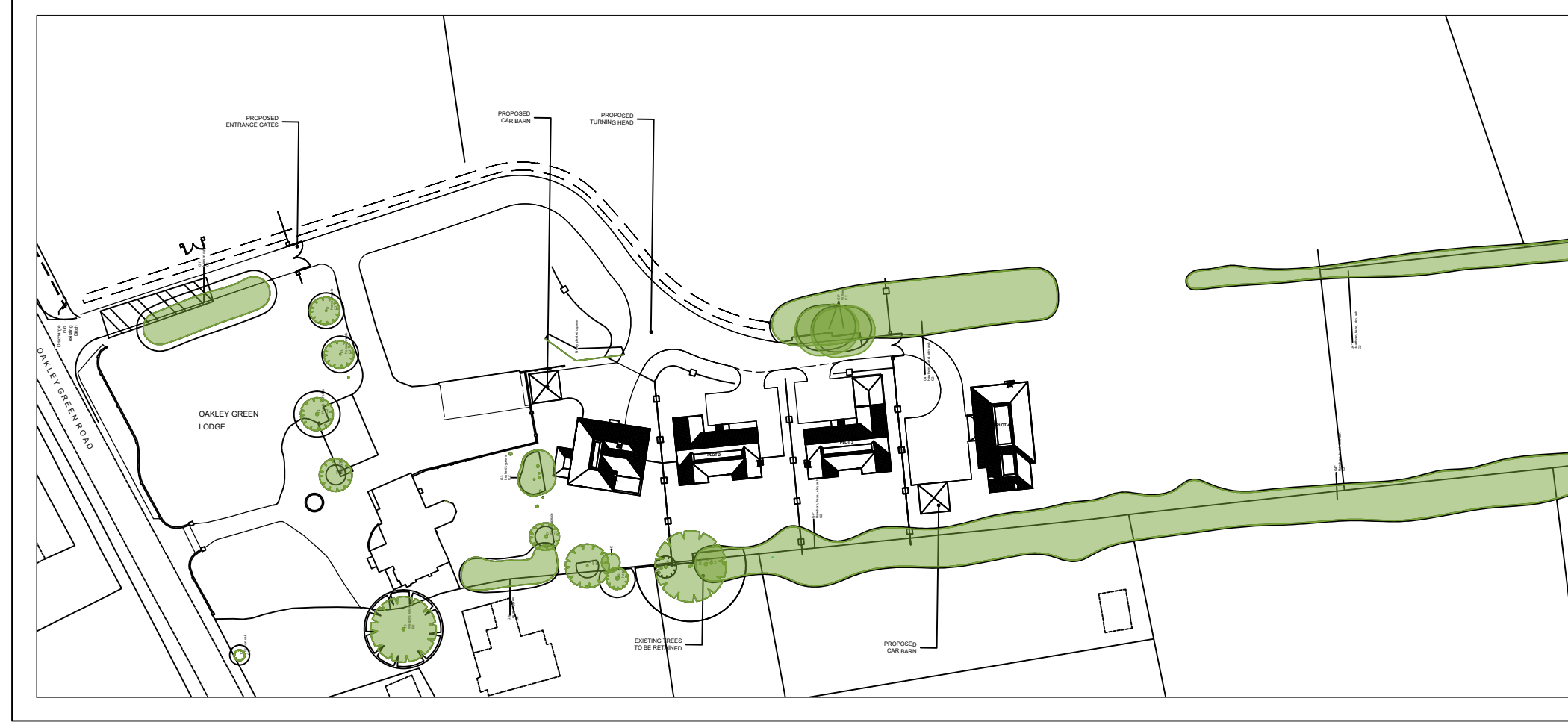


PROPOSED CAR BARN  
PROPOSED TURNING HEAD



**SPECIFICATION**  
All works generally, to comply with the written Soft Landscape Specification.  
In case of quantity discrepancies, the quantities on the plan(s) take precedent over the quantities shown in the planting schedule.  
**NOTES:**  
DO NOT SCALE FROM DRAWING  
NOT FOR CONSTRUCTION, FOR PLANNING PURPOSES ONLY

- Legend**
- Existing trees to be retained and protected during construction
  - Proposed tree planting within soft landscape. See detail on Sheet
  - Proposed specimen shrub planting.
  - Proposed mixed native hedge planting to be planted in a double staggered row 300mm apart and at 400mm centres in each row. To be maintained at 1m height and 1.8m height adjacent to site boundaries
  - Proposed mixed native hedge planting to infill existing buffer as required. Planting density 5 per linear metre maximum. Mulch as below.
  - Proposed *Lonicera* hedge planting to be planted in a single row at 300mm centres. Mulch as below.
  - Proposed hedge planting to be planted in a double staggered row 300mm apart and at 400mm centres in each row and at 400mm centres in each row. To be maintained at 1m height
  - Proposed decorative mix shrub planting to be planted in groups of 3 of each species and to receive 75mm of bark mulch after planting operations
  - Proposed native mix to be planted in groups of 5-7no. of each species to infill where required to create a linear buffer. Mulch as above.
  - Proposed grass areas to receive good quality amenity grass turves laid in line with good horticultural practices
  - Proposed Meadow Grass Mixture for Wet Soils mixture, to be seeded with EG8 seed mix as supplied by Emorsgate Seeds and sown at 5 grams per msq, or similar and approved
  - Proposed to be seeded with EM4 Meadow Mixture for Clay Soils as supplied by Emorsgate Seeds and sown at 4 grams per msq, or similar and approved

Full Planting Schedule on Sheet 2



A	16.01.24	Layout Update	KL
Rev	Date	Details	Drawn



HEAD OFFICE  
Rodbourne Rail Business Centre, Orange Lane,  
Malmesbury, SN16 0ES  
Tel: 01666 825646

4 & 5 The Old Mill, Fry's Yard, Bridge Street,  
Godalming, GU7 1HP  
Tel: 01483 425714

Suite 6, Crescent House, Yonge Close,  
Eastleigh, SO50 95X  
Tel: 02382 026300

email: mail@acdenv.co.uk  
www.acdenvironmental.co.uk

**WESTBOURNE GROUP**  
DEVELOPMENTS | INTERIORS | PRIVATE RESIDENCES

scheme: Oakley Green Lodge  
Oakley, Windsor  
client: Westbourne Group  
drawing: Soft Landscape Proposals  
date: Oct 2023  
scale: 1:200@A1  
drawing no: PRI24396 11A Sheet 1  
drawn: KL checked: JS

Copyright of ACD Environmental Ltd. All rights described in Chapter IV of the Copyright, Designs and Patents Act 1988 have been generally asserted. 2011. Copyright of this plan remains with ACD until all fees have been paid in full.

