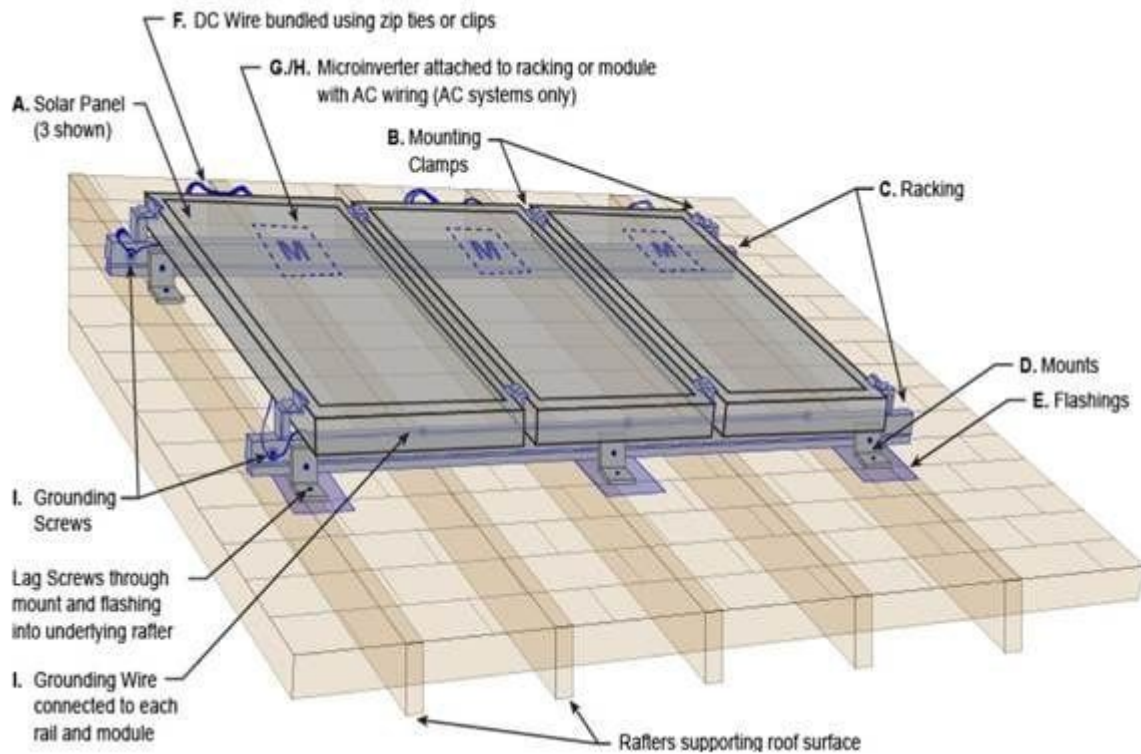


Solar panels 30 - 50mm thick depending on manufacturer
Mounting frames 100 - 125 mm high depending on manufacturer



SOLAR PANEL FIXING DETAILS

PROPOSED ALTERATIONS AND REFURBISHMENT OF LANCASTER HOUSE, BRISTOL ROAD, THORNBURY BS35 3JA (GRADE II LISTED)