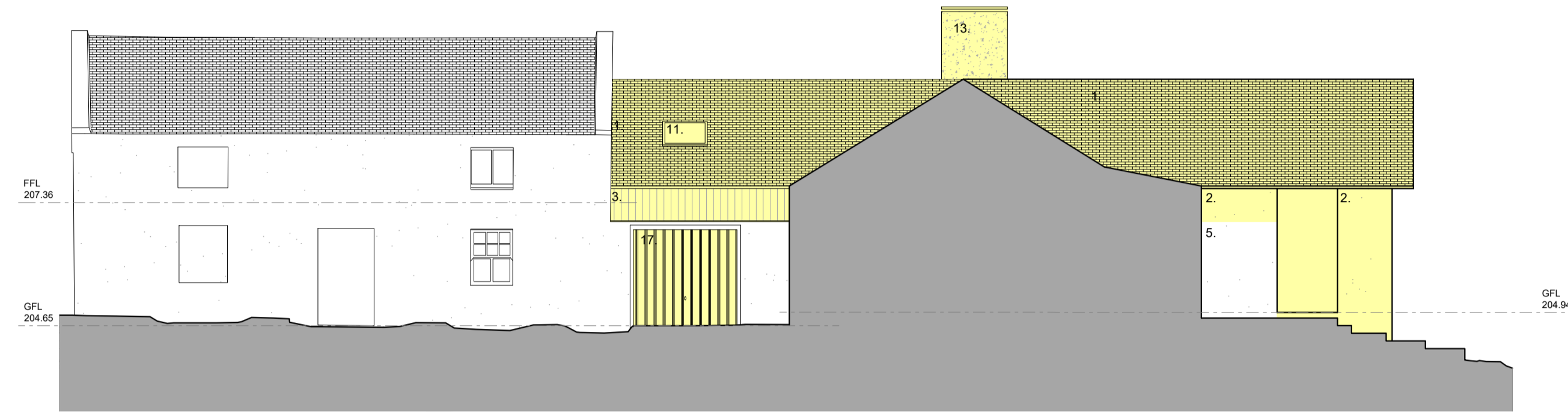
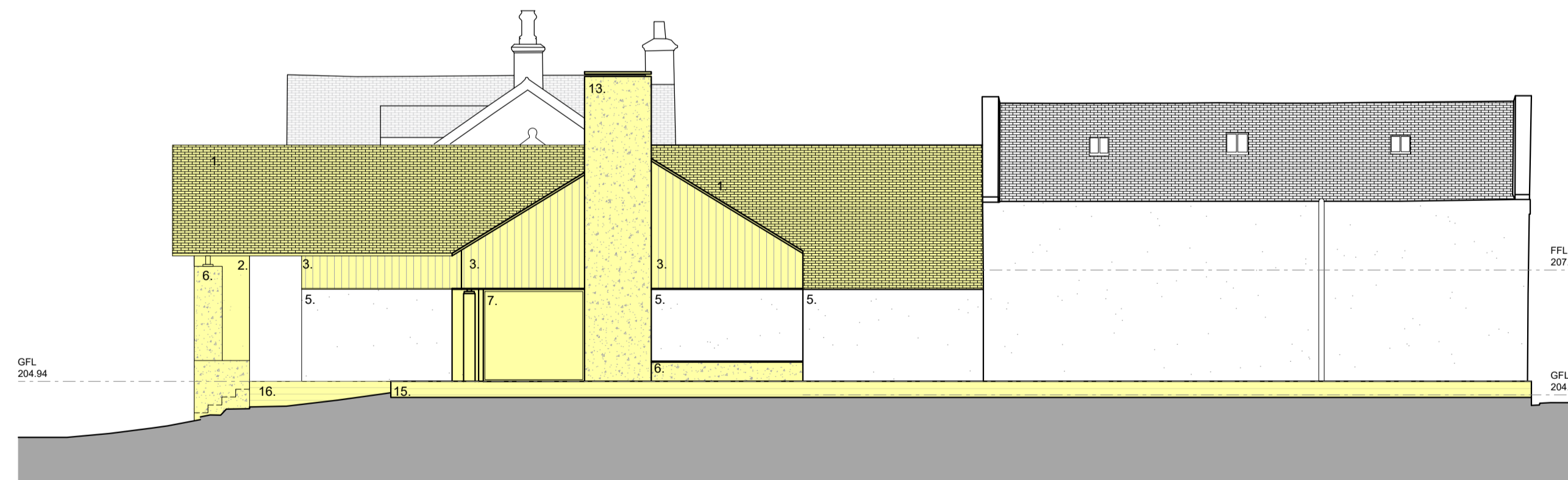


00 Key Plan
1:500



03 Proposed West Elevation
1:100



04 Proposed East Elevation
1:100

rev.	date	details	by	rev.	date	details	by	notes
A	21.09.23	Issued for Planning.	KJL			<p>Areas Indicating Proposed Works</p>		<p>1. New roof installed with slate finish to match existing roofs. 2. Stone to match existing coursed random rubble construction. Retained stone utilised where possible. 3. Blackened timber cladding. 4. Black standing seam zinc cladding. 5. Existing coursed random rubble external stonework retained and refurbished. 6. Concrete. 7. Dark Grey PPC aluminium framed window. 8. Dark Grey PPC aluminium framed glazed sliding doorset. 9. Dark Grey PPC aluminium framed window</p>
								<p>with window seat internally. 10. Dark Grey PPC aluminium framed entrance door with fixed glazed infill. 11. Dark Grey PPC aluminium framed glazed rooflight. 12. External entrance canopy formed. 13. External chimney stack installed in cast in-situ concrete. 14. External patio formed with large format stone slabs. 15. External access deck formed with large format stone slabs. 16. External patio formed with timber decking. 17. New timber garage door.</p>
<p>Mr & Mrs Black Castlehill Farm Greentowers Road Lanark ML11 7RB</p>								
<p>drawing status CAS.AR(PL)012</p>			<p>revision A</p>			<p>drawing title Proposed East and West Elevations Castlehill Farm</p>		
<p>status Planning</p>			<p>scale 1:100</p>			<p>date 21.09.23</p>		
<p>GFiveThree The Pentagon Centre G3 8AZ Phone: 07877 054 862 Email: rsar@gfivethree.com</p>			<p>drawn KJL</p>			<p>format a1</p>		