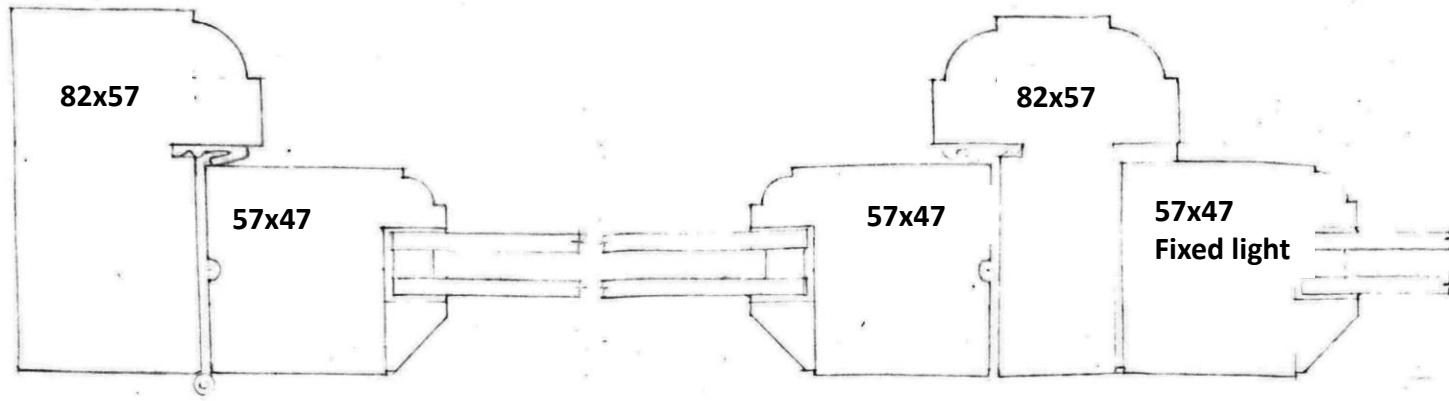
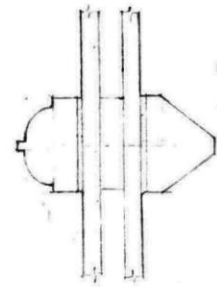


# Bronhaul Barn Window Design

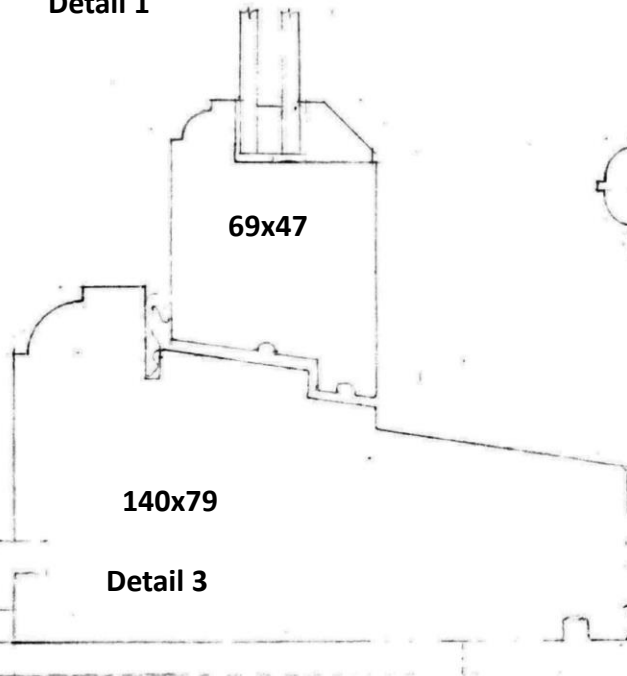


Detail 1

Detail 2



Detail 4



Detail 3

## Notes

Bronhaul Barn window section design:

- Windows to be manufactured from kiln-dried Sapele to be left treated with oil, however not painted
- A combination of laminated and solid sections to be used
- Glazing to be 24mm argon-filled sealed double glazed units (low E)
- Iron monger to be traditional pattern black iron
- Hardwood casements to be flush

JNS