

RIVER SMITE

Paddock

Paddock

Fagus sylvatica Common Beech

3x New Betula utilis 5m

Fagus sylvatica hetero phyllia Aspenfolia

Open Countryside

Existing Garage

Outbuilding

Existing Parking

Juglans regia - Common Walnut Tree

Root protection zone 3300mm  
12x 275mm diameter 1500mm high

Existing Apple

Domestic Garden

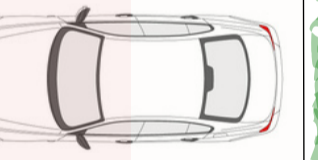
Existing Horse Chestnut

New Tilia cordata

21695

Finished level of parking area level with paddock

Parking and access arrangements approved under 22/01813/FUL shown shaded



Duct for power cable to lights and possible future gates.

3601

5274

Gateposts min 450mm as sited to suit reclaimed limestone from the boundary wall. Build in in gate piers to inner pair of gate posts

5500

Reduce height of roadside wall to 650mm high. Retain limestone on piers for gate posts and possible edging around parking area. External radius of curved entrance walls approx 1800mm

Channel drain at bottom of slope to soakway

2 x 2m pedestrian visibility splay in blue dotted

New Tilia cordata

750

8097

Domestic Garden

New Tilia cordata

750

8097

Line of estate fencing

New Betula utilis, multi stem

19870

5000

17335

3171

4916

4916

4916

4916

4916

4916

4916

4916

4916

4916

4916

4916

4916

4916

4916

4916

4916

4916

4916

4916

STANFORD PARTNERSHIP  
Architectural Design & Planning  
The Cottage  
School Lane  
Colston Bassett  
NG12 3FD  
07841 158957  
info@stanfordpartnership.co.uk

Date  
31st December 2022

Drawing Title  
Block Plan with Proposed Garage

Scale  
1:200 @ A3

Drawing No  
260/39

Project  
Proposed Extension  
The Cottage on Churchgate

Client  
Lucy Roylance

Paynes Cottage