

RIVER

SMITE

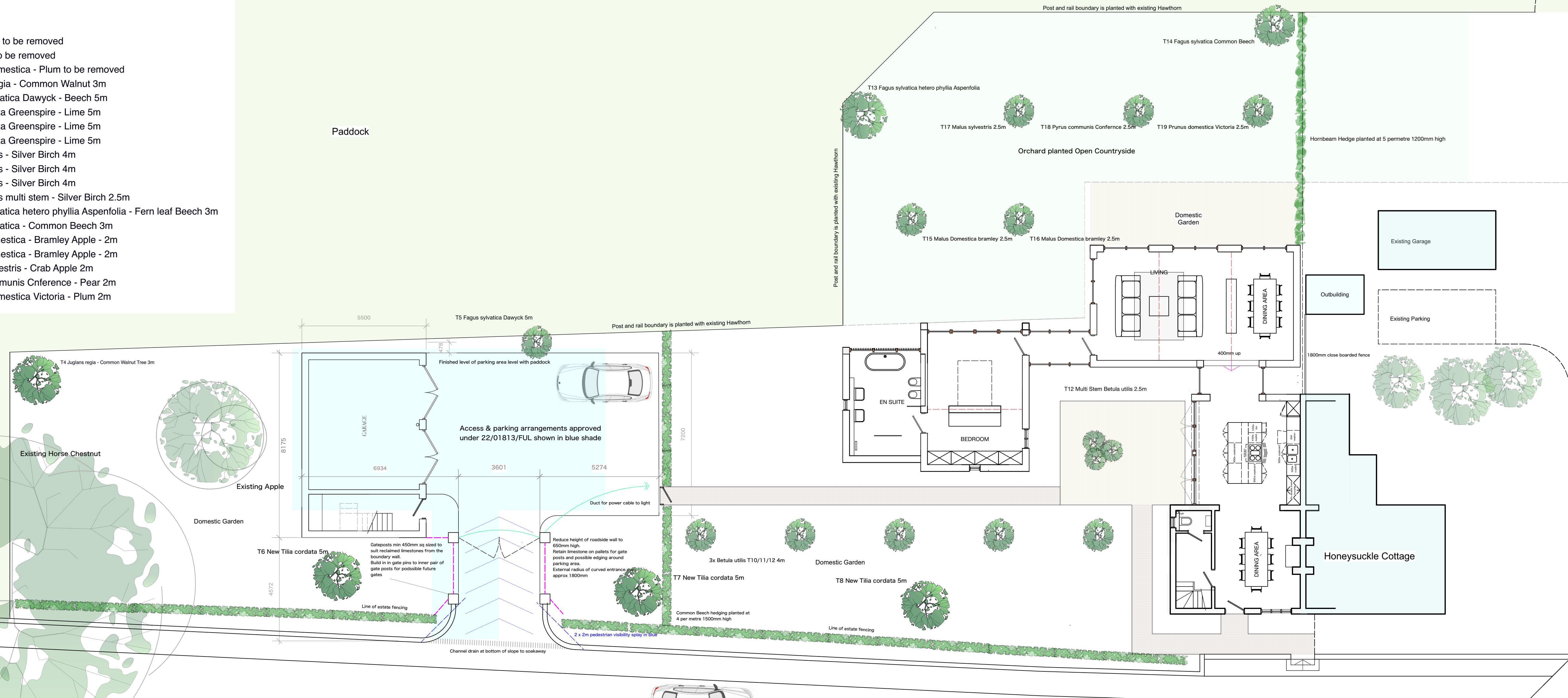
**Paving**

- Sawn Kandla Grey Smooth Indian Sandstone Paving  
22mm thick honed 900x600mm Single Size
- Gravel Paths and Parking Court  
Rolled Breedon gravel
- Block paving to Highway Access  
Sorrento tumbled concrete setts in grey

- Tree Planting**
- T1 Scots Pine to be removed
  - T2 Leylandii to be removed
  - T3 Prunus domestica - Plum to be removed
  - T4 Juglans regia - Common Walnut 3m
  - T5 Fagus sylvatica Dawyck - Beech 5m
  - T6 Tilia cordata Greenspire - Lime 5m
  - T7 Tilia cordata Greenspire - Lime 5m
  - T8 Tilia cordata Greenspire - Lime 5m
  - T9 Betula utilis - Silver Birch 4m
  - T10 Betula utilis - Silver Birch 4m
  - T11 Betula utilis - Silver Birch 4m
  - T12 Betula utilis multi stem - Silver Birch 2.5m
  - T13 Fagus sylvatica hetero phyllia Aspenfolia - Fern leaf Beech 3m
  - T14 Fagus sylvatica - Common Beech 3m
  - T15 Malus domestica - Bramley Apple - 2m
  - T16 Malus domestica - Bramley Apple - 2m
  - T17 Malus sylvestris - Crab Apple 2m
  - T18 Pyrus communis Conference - Pear 2m
  - T19 Prunus domestica Victoria - Plum 2m

Paddock

Paddock



**STANFORD PARTNERSHIP**  
 Architectural Design & Planning  
 The Cottage  
 School Lane  
 Colston Bassett  
 NG12 3FD  
 07841 158957  
 info@stanfordpartnership.co.uk

Date  
15th August 2023

Drawing Title  
Site layout / Landscape

Scale  
1:50 @ A1

Drawing No  
340/01B

Project  
Proposed Extension  
Sunset Cottage

Client  
Lucy Roylance

CHURCHGATE

Paynes Cottage