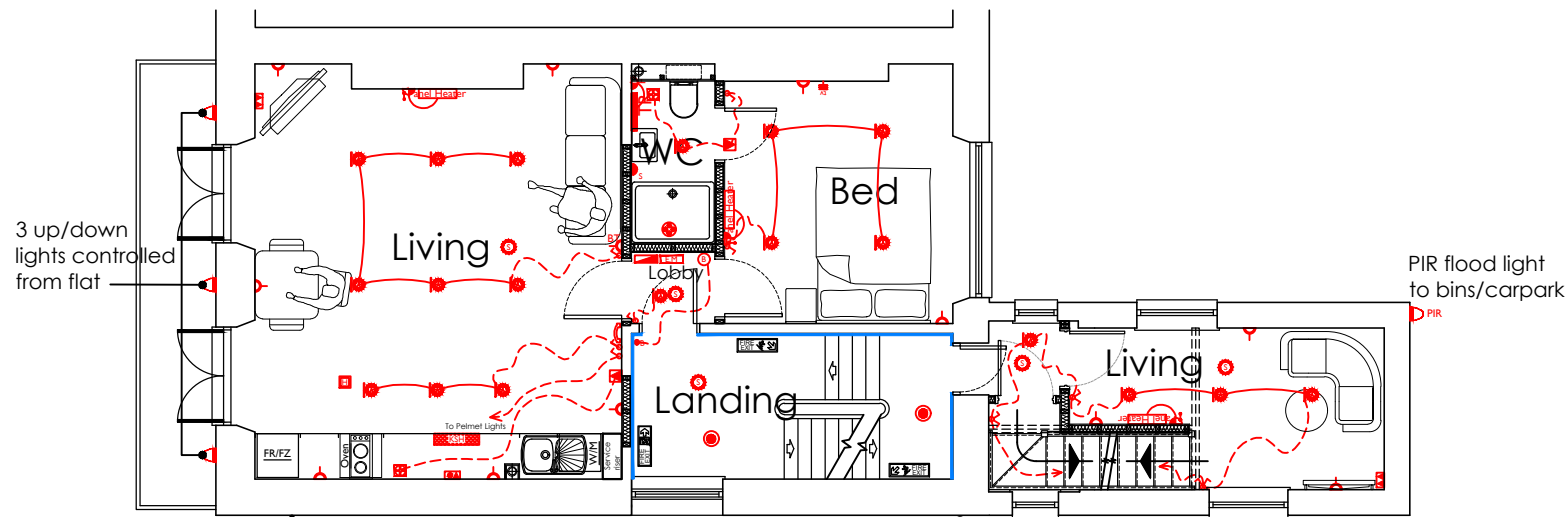
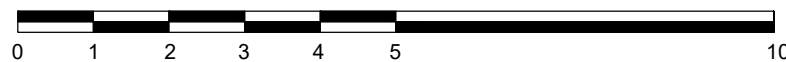


Second Floor Flat



First Floor Flat

Scale 1:100



ELECTRICS KEY:-

- Double socket
- Single socket
- Landlords lockable socket
- Lockable Single socket
- External socket
- Spur socket (HL=High level)
- Dual voltage shaver socket
- Cooker switch
- One way switch
- Two way switch
- Three way switch
- Switch with neon indicator
- Smoke alarm
- Heat alarm
- Carbon monoxide alarm - installed to Gas safe regulations
- Mechanical vent
- Mechanical vent isolator switch
- TV point and socket for Sky
- British telecom
- Virgin Media
- Multiplex plate - 2x double socket, BT, 2x Satellite, TV, BT, and Pre wired for Sky Q
- Electric consumer unit
- Electricity meter
- Door Entrance System
- Audiophone Linked to Door Entrance System
- External fire alarm sounder
- Door bell
- Boiler control
- Thermostat
- Gas point in floor
- Frost stat
- Under floor heating thermostat
- Under floor heating manifold
- Multi gang switch
- Low level pendant light
- Optical network termination
- Battery backup unit
- CAT 6 RJ45 point
- Energy efficient enclosed bulkhead light
- Energy efficient ceiling light on landlords circuit on timer switch with integrated PIR and dusk fill down sensors.
- Energy efficient ceiling light
- Energy efficient pendant light
- Energy efficient wall light
- Low voltage energy efficient downlighter
- Energy Efficient downlighter
- Energy Efficient downlighter with fan
- Energy efficient mirror light cabinet with shaver socket
- Mains voltage ceiling track with energy efficient 4 way spotlights
- Fluorescent tube light
- Energy efficient ext. soffit light
- External energy efficient wall light
- External energy efficient wall light with PIR within lantern
- Energy efficient external light with down to dusk sensor
- Cover plate for future light
- Passive infra-red sensor
- Directional passive infra-red sensor
- Energy efficient communal ceiling light on timer switch
- Energy efficient communal wall light on timer switch
- Energy efficient emergency ceiling light on landlords circuit with battery backup on timer switch for normal use with integrated PIR and dusk till dawn sensors. Emergency lighting system to be combined with main communal lighting
- Radiator
- Electric ladder towel rad
- Wet system ladder towel rad with dual fuel element
- Electric panel heater with fused spur Communal
- Tubular heater within cupboard including guard
- Thermostatic electric shower
- Energy efficient strip lights
- Outside Tap
- Kickspace heater
- Satellite wiring - Refer to clients specification
- Electric Vehicle charging point

NOTES

All switches 1200 above F.F.L. to top of plate unless otherwise stated
 All sockets 450 above F.F.L. to underside of plate unless otherwise stated
 Carbon Monoxide detectors to be installed in strict accordance with specified manufacturers requirements. ensure Carbon Monoxide detectors are installed within the proximity identified within then manufacturer's literature.
 TV/FM Aerial wire only each point back to the loft area. Cables to be labelled and secured centrally to a trussed rafter adjacent to the loft hatch.

DISCLAIMER: This drawing is copyright and the property of Trinity Rose Architecture Ltd and information is not to be disclosed or reproduced. All dimensions are millimetres, you should not scale from the drawing unless for planning purposes and use figured dimensions where shown. If you are in doubt or the contents of the drawing are not suitable please ask. Please use this drawing in conjunction with all consultants information and site specifications.

B	02/11/23	Reissue.
A	02/08/23	Electric & heating layouts adjusted.

TRINITY ROSE
ARCHITECTURE

www.trinity-rose.co.uk architecture@trinity-rose.co.uk T: 01962 880426

Issue **Preliminary**

Client **Brentor Property Group**

Project
**11 Cumberland Place
 Southampton
 SO15 2BH**

Drawing Title
**First & Second Floor
 Electrical & Heating Layout**

Scale 1:100 @ A3	Date July 2023	Drawing Ref. B23-1249-P-210	Rev B
---------------------	-------------------	--------------------------------	----------