

Steel / Ductile Iron Pipes PN16 to seal at 16bar						
Gasket Specification	DN100	DN300	DN600	DN700	DN800	DN900
Torque setting (Nm)	49	160	480	467	534	600
C.O.F.	0.120					
Torque sequence	As per Drg: 40018-001-DWG-G02-001 Bolt Specification Grade 4.6					

**FARRANS** A CBM COMPANY

**ATKINS** Member of the SNC-Lavalin Group

**Atkins Limited**  
Chadwick House, Birchwood Park, Warrington, WA3 6AE  
Direct: 01925 238319

**LEGEND:**

- PLANNING BOUNDARY
- WORKING BOUNDARY
- WATERCOURSE
- PROPOSED PIPE ROUTE
- PUBLIC RIGHT OF WAYS
- TREE
- L.V.
- A.V.
- W.O.
- SETTING OUT POINT
- ELECTRIC POLE
- HAZARD IDENTIFIER
- CLAY STANK

**EXISTING SERVICES:**

- WATER MAIN
- SEWER MAIN
- ELECTRIC-HV
- ELECTRIC-HV OVERHEAD
- ELECTRIC-LV
- ELECTRIC-LV OVERHEAD
- ELECTRIC LINE
- BT UNDERGROUND
- BT OVERHEAD
- BT-VIRGIN MEDIA
- GAS-LOW PRESSURE
- GAS-MEDIUM PRESSURE
- STORM WATER MAIN
- STREET LIGHT CABLE
- GAS WORKING SAFETY ZONE
- POWER LINE SAFETY ZONE

**REFERENCE:**  
SZ14-T15A-PR1-M3-001-DWG-CST-G04-034: GENERAL NOTES / REFERENCES  
40018-001-DWG-G02-001: FLANGE MANAGEMENT DRAWING

**SAFETY, HEALTH AND ENVIRONMENTAL INFORMATION**  
In addition to the hazards/risks normally associated with the types of work detailed on this drawing, note the following:

**CONSTRUCTION**  
REFER DRA DOCUMENT NO.40018\_001\_DOC\_C01\_001.

**MAINTENANCE/CLEANING**  
REFER DRA DOCUMENT NO. 40018\_001\_DOC\_C01\_001.

**DECOMMISSIONING/DEMOLITION**  
REFER DRA DOCUMENT NO. 40018\_001\_DOC\_C01\_001.

It is assumed that all works will be carried out by a competent contractor working, where appropriate, to an approved method statement

**PLAN**  
SCALE 1:1000

**HORIZONTAL BEND**

SOP NO.	EASTING	NORTHING
WS-H008	414516.653	517253.901
WS-H009	414613.245	517254.285
WS-H010	414841.495	517316.420
WL-H008	414517.060	517250.902
WL-H009	414613.652	517251.287
WL-H010	414841.940	517313.432

**VERTICAL BEND**

SOP NO.	EASTING	NORTHING
WS-V005	414996.736	517321.103
WL-V005	414996.826	517318.105

**AIRVALVE**

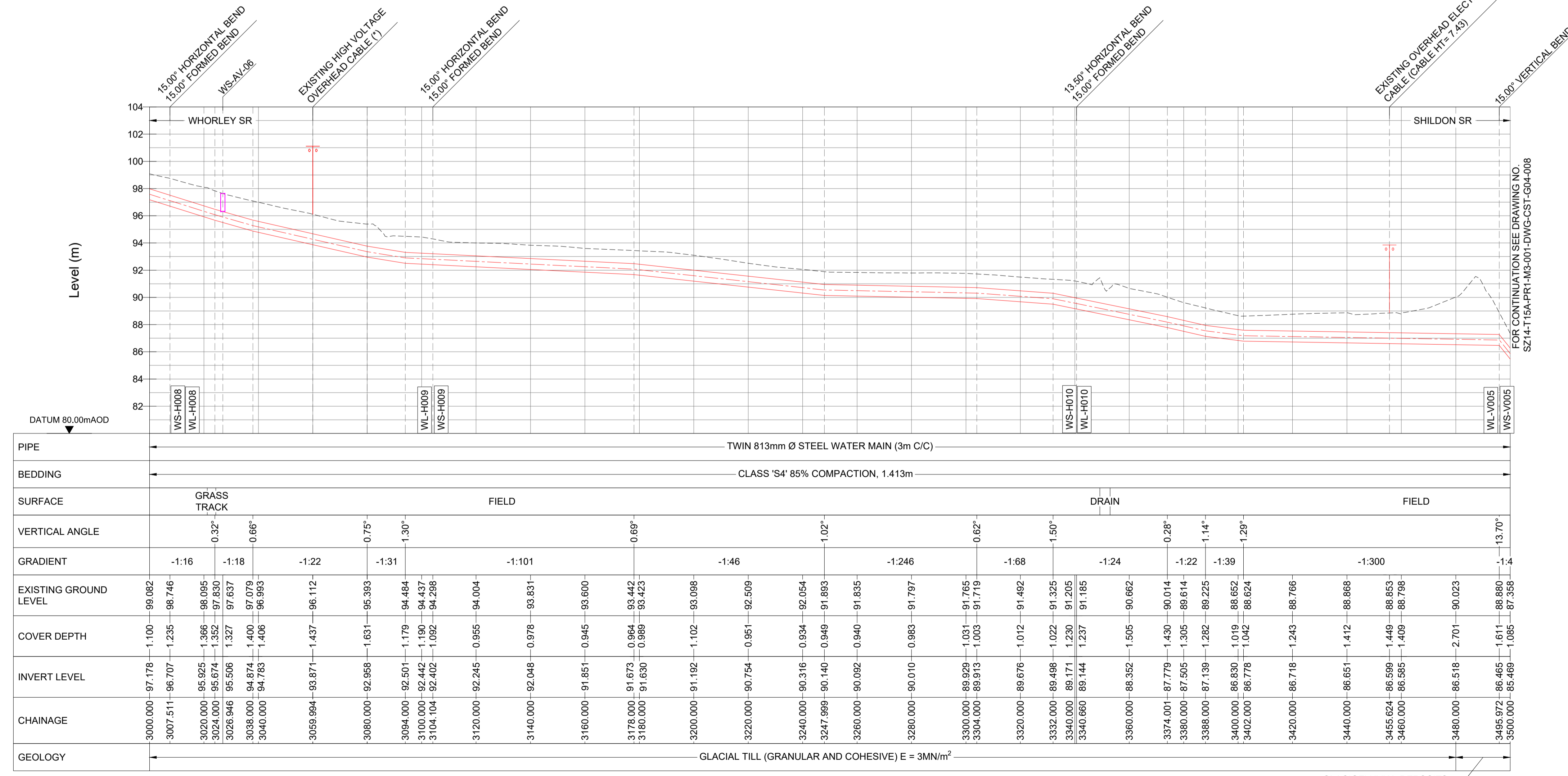
SOP NO.	EASTING	NORTHING
WS-AV-06	414536.088	517253.978
WL-AV-06	414536.105	517250.978

**WHORLEY TO SHILDON SETTING OUT POINTS**

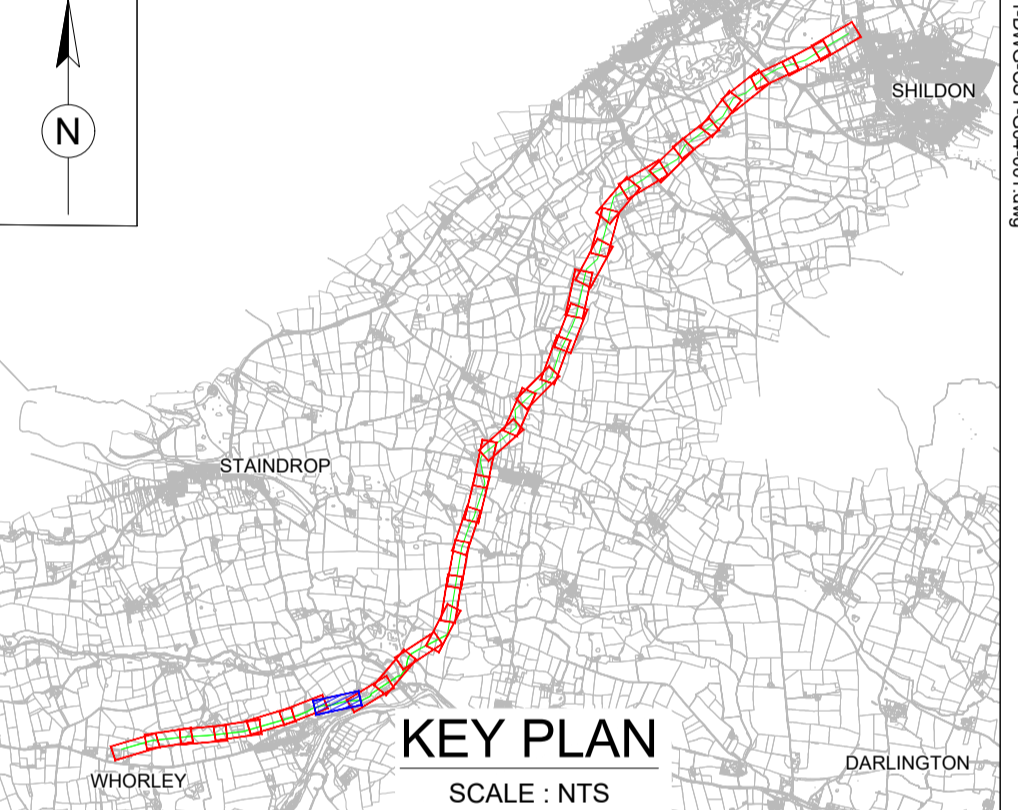
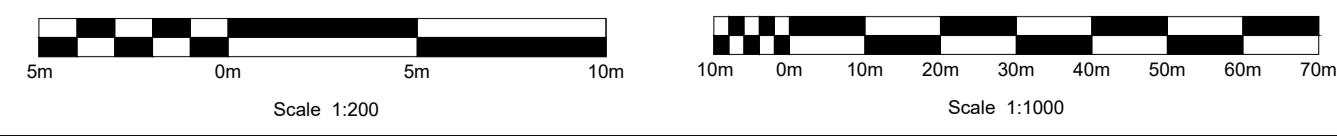
CHAINAGE (m)	EASTING	NORTHING
3000	414509.406	517251.928
3040	414549.142	517254.030
3080	414589.141	517254.189
3120	414628.583	517258.461
3160	414667.179	517268.967
3200	414705.774	517279.474
3240	414744.370	517289.980
3280	414782.965	517300.487
3320	414821.561	517310.993
3360	414860.156	517321.500
3400	414898.752	517332.007
3440	414937.348	517342.514
3480	414975.944	517353.021

**WHORLEY TO LONG NEWTON SETTING OUT POINTS**

CHAINAGE (m)	EASTING	NORTHING
3000	414510.252	517249.049
3040	414550.004	517251.033
3080	414590.004	517251.193
3120	414629.430	517255.582
3160	414668.025	517266.088
3200	414706.621	517276.595
3240	414745.216	517287.101
3280	414783.812	517297.608
3320	414822.407	517308.114
3360	414861.003	517318.621
3400	414900.000	517329.128
3440	414941.651	517316.440
3480	414981.633	517317.646



**LONGITUDINAL SECTION**  
HORIZONTAL SCALE 1:1000 VERTICAL SCALE 1:200



**Drawing Status:** FOR REVIEW BY LEAD APPOINTED PARTY

**Suitability:** S4

Rev.	Description	Date	Drawn	Chk'd	App'd
P06	FOR REVIEW	17.11.2023	AJ	RH	SK
P05	FOR REVIEW	10.10.2023	AJ	RH	SK
P04	FOR REVIEW	18.09.2023	AJ	RH	SK
P03	FOR REVIEW	26.07.2023	AJ	RH	SK
P02	FOR REVIEW	30.06.2023	AJ	RH	SK

**Note:-**  
IF THIS DRAWING IS FOUND TO BE IN ANY WAY INACCURATE, PLEASE ADVISE THE RECORD OFFICE IMMEDIATELY AND COMPLETE AN AMENDMENT FORM.



**CONTRACTOR:** FARRANS  
**REF. NO.:** WN019/0205-4.11  
**I.D. PROJECT NO.:** WN019/0205

**Drawing Title:**  
TEES STRATEGIC TRANSFER MAIN  
WHORLEY SR TO SHILDON SR  
PLAN AND LONGITUDINAL SECTION

**Dwg No:**  
SZ14-T15A-PR1-M3-001-DWG-CST-G04-007

Sheet:	Date:	Sheet:	Scale:	Rev No:
7 OF 33	17.11.2023	A1	AS SHOWN	P06