

FARRANS A CBM COMPANY | **ATKINS** Member of the SNC-Lavalin Group | **Atkins Limited** Chadwick House, Birchwood Park, Warrington, WA3 6AE Direct: 01925 238319

LEGEND:

- PLANNING BOUNDARY
- WORKING BOUNDARY
- WATERCOURSE
- PROPOSED PIPE ROUTE
- PUBLIC RIGHT OF WAY
- TREE
- L.V.
- A.V.
- W.O.
- SETTING OUT POINT
- ELECTRIC POLE
- HAZARD IDENTIFIER
- CLAY STANK

EXISTING SERVICES:

- WATER MAIN
- SEWER MAIN
- ELECTRIC-HV
- ELECTRIC-HV OVERHEAD
- ELECTRIC-LV
- ELECTRIC-LV OVERHEAD
- ELECTRIC
- BT UNDERGROUND
- BT OVERHEAD
- BT-VIRGIN MEDIA
- GAS-LOW PRESSURE
- GAS-MEDIUM PRESSURE
- STORM WATER MAIN
- STREET LIGHT CABLE
- GAS WORKING SAFETY ZONE
- POWER LINE SAFETY ZONE

REFERENCE:
SZ14-T15A-PR1-M1-001-DWG-CST-G04-029: GENERAL NOTES / REFERENCES
40018-001-DWG-CST-G02-001: FLANGE MANAGEMENT DRAWING

SAFETY, HEALTH AND ENVIRONMENTAL INFORMATION

In addition to the hazards/risks normally associated with the types of work detailed on this drawing, note the following:

CONSTRUCTION
REFER DRA DOCUMENT NO.40018_001_DOC_C01_001.

MAINTENANCE/CLEANING
REFER DRA DOCUMENT NO. 40018_001_DOC_C01_001.

DECOMMISSIONING/DEMOLITION
REFER DRA DOCUMENT NO. 40018_001_DOC_C01_001.

It is assumed that all works will be carried out by a competent contractor working, where appropriate, to an approved method statement

PLAN
SCALE 1:1000

(*) - DENOTES SURVEY REQUIRED. REFER TO NOTE 4 FROM GENERAL NOTES.

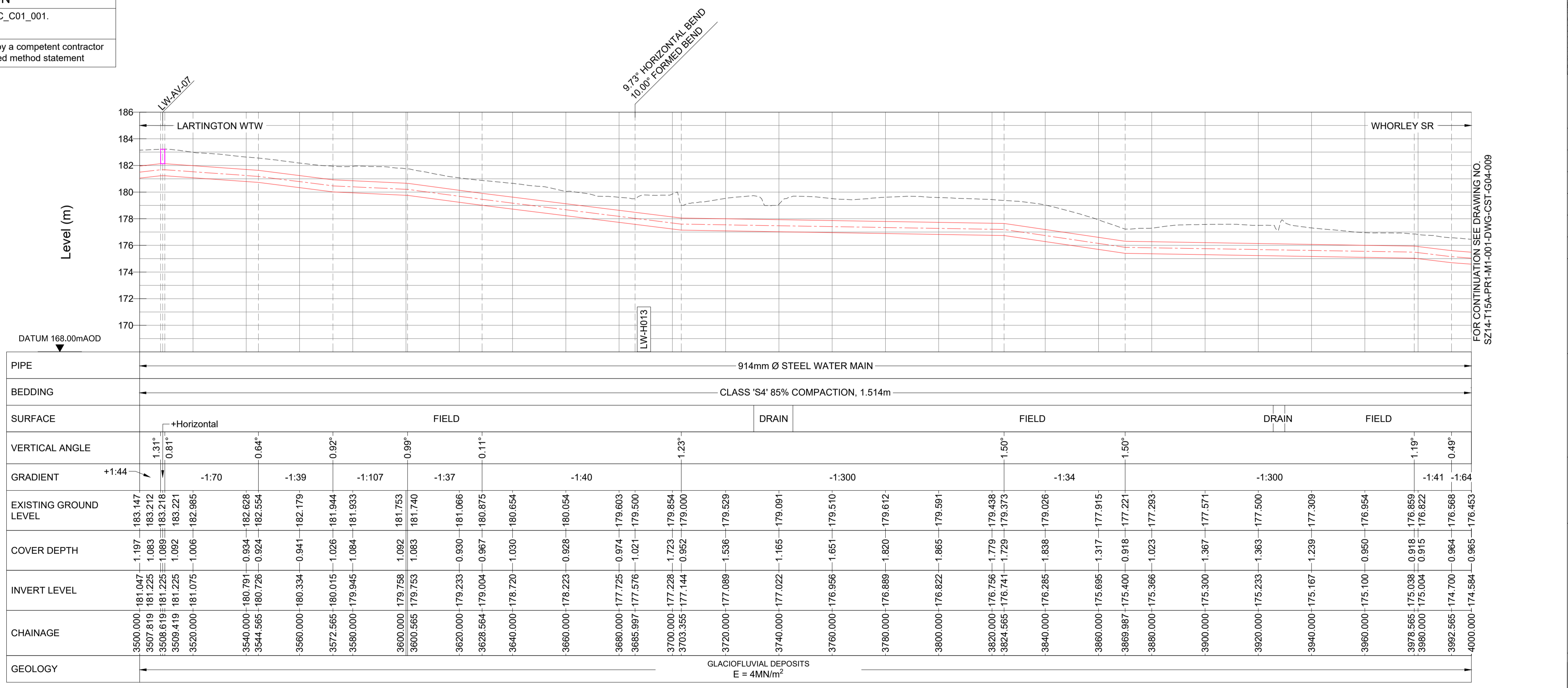


LARTINGTON TO WHORLEY SETTING OUT POINTS

Station	Easting	Northing
3520	403938.288	518724.264
3560	403973.778	518705.814
3600	404009.269	518687.365
3640	404044.760	518668.915
3680	404080.251	518650.465
3720	404117.959	518637.341
3760	404156.058	518625.157
3800	404194.158	518612.972
3840	404232.256	518600.788
3880	404270.356	518588.604
3920	404308.455	518576.419
3960	404346.554	518564.235
4000	404384.653	518552.050

HORIZONTAL BEND

SOP NO.	EASTING	NORTHING
LW-H013	404085.573	518647.699
LW-AV-07	403928.189	518729.514



Drawing Status: FOR REVIEW BY LEAD APPOINTED PARTY

Suitability: S4

Rev.	Description	Date	Drawn	Chk'd	App'd
P04	FOR REVIEW	20.11.2023	AJ	RH	SK
P03	FOR REVIEW	18.09.2023	AJ	RH	SK
P02	FOR REVIEW	26.07.2023	AJ	RH	SK
P01	REVIEW AND COMMENTS	25.04.2023	AJ	SM	SK

Note:-
IF THIS DRAWING IS FOUND TO BE IN ANY WAY INACCURATE, PLEASE ADVISE THE RECORD OFFICE IMMEDIATELY AND COMPLETE AN AMENDMENT FORM.

NORTHUMBRIAN WATER living water

CONTRACTOR: FARRANS
REF. NO.: WN019/0205-4.11
I.D. PROJECT NO.: WN019/0205

Drawing Title:
TEES STRATEGIC TRANSFER MAIN
LARTINGTON WTW TO WHORLEY SR
PLAN AND LONGITUDINAL SECTION

Dwg No: SZ14-T15A-PR1-M1-001-DWG-CST-G04-008

Sheet:	Date:	Sheet:	Scale:	Rev No:
8 OF 23	20.11.2023	A1	AS SHOWN	P04