

FARRANS A CBM COMPANY | **ATKINS** Member of the SNC-Lavalin Group | **Atkins Limited** Chadwick House, Birchwood Park, Warrington, WA3 6AE Direct: 01925 238319

LEGEND:

- PLANNING BOUNDARY
- WORKING BOUNDARY
- WATERCOURSE
- PROPOSED PIPE ROUTE
- PUBLIC RIGHT OF WAY
- TREE
- L.V.
- A.V.
- W.O.
- SETTING OUT POINT
- ELECTRIC POLE
- HAZARD IDENTIFIER
- CLAY STANK

EXISTING SERVICES:

- WATER MAIN
- SEWER MAIN
- ELECTRIC-HV
- ELECTRIC-HV OVERHEAD
- ELECTRIC-LV
- ELECTRIC-LV OVERHEAD
- ELECTRIC
- BT UNDERGROUND
- BT OVERHEAD
- BT-VIRGIN MEDIA
- GAS-LOW PRESSURE
- GAS-MEDIUM PRESSURE
- STORM WATER MAIN
- STREET LIGHT CABLE
- GAS WORKING SAFETY ZONE
- POWER LINE SAFETY ZONE

REFERENCE:
 SZ14-T15A-PR1-M1-001-DWG-CST-G04-029: GENERAL NOTES / REFERENCES
 40018-001-DWG-CST-G02-001: FLANGE MANAGEMENT DRAWING

SAFETY, HEALTH AND ENVIRONMENTAL INFORMATION

In addition to the hazards/risks normally associated with the types of work detailed on this drawing, note the following:

CONSTRUCTION
 REFER DRA DOCUMENT NO.40018_001_DOC_C01_001.

MAINTENANCE/CLEANING
 REFER DRA DOCUMENT NO. 40018_001_DOC_C01_001.

DECOMMISSIONING/DEMOLITION
 REFER DRA DOCUMENT NO. 40018_001_DOC_C01_001.

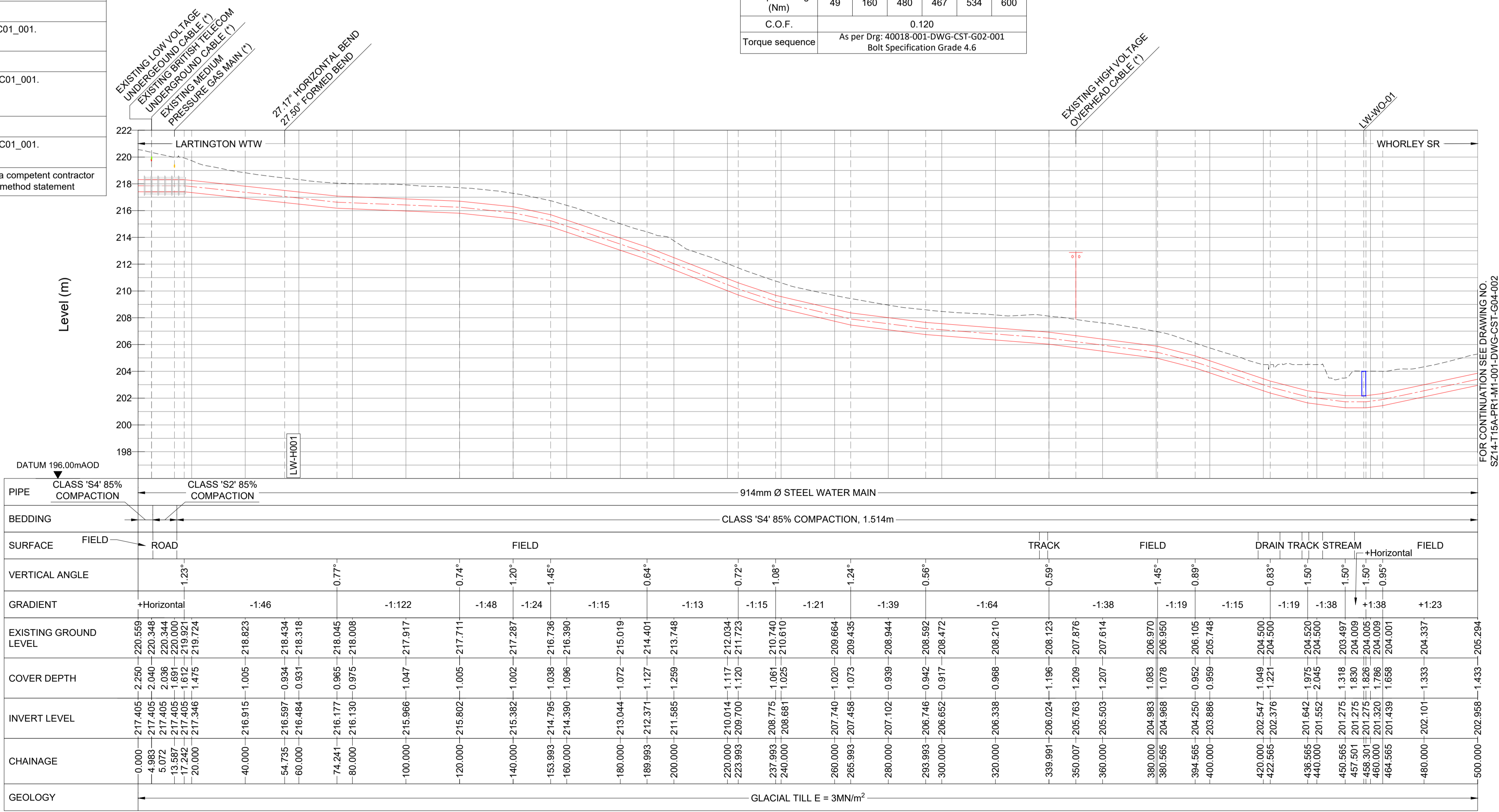
It is assumed that all works will be carried out by a competent contractor working, where appropriate, to an approved method statement

Steel / Ductile Iron Pipes PN16 to seal at 16barg						
Gasket Specification	DN100	DN300	DN600	DN700	DN800	DN900
Rubber encased steel core (Type G-S-S)						
Torque setting (Nm)	49	160	480	467	534	600
C.O.F.	0.120					
Torque sequence	As per Drg: 40018-001-DWG-CST-G02-001 Bolt Specification Grade 4.6					

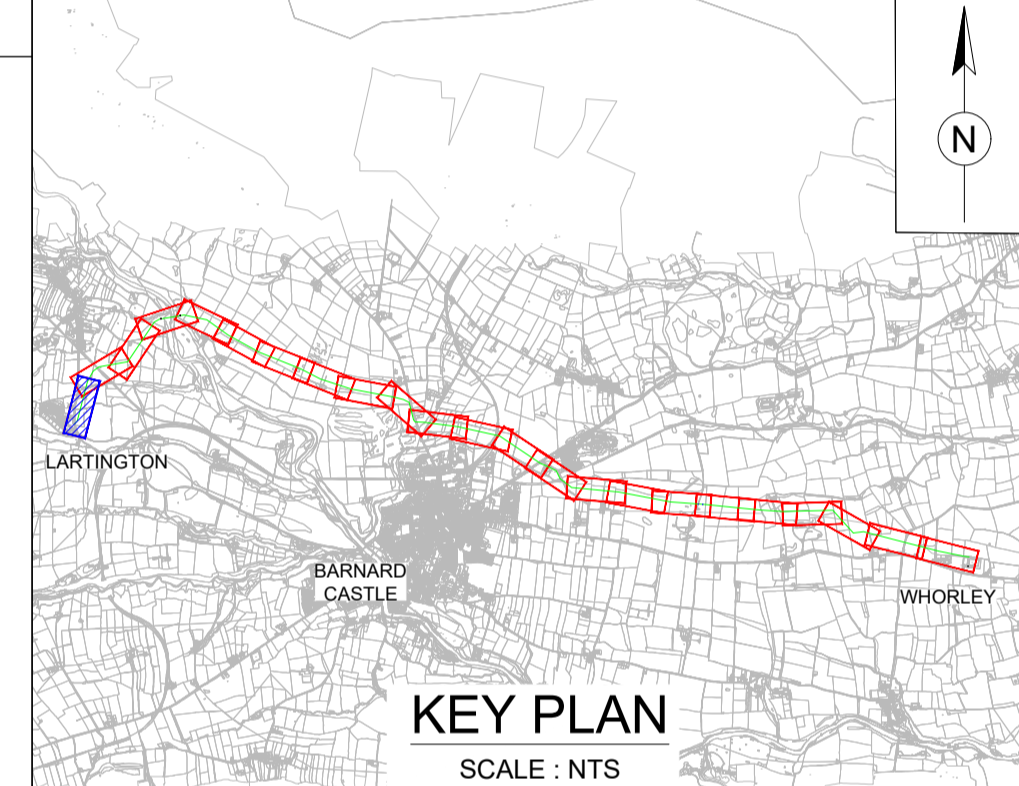
(*) - DENOTES SURVEY REQUIRED. REFER TO NOTE 4 FROM GENERAL NOTES.

LARTINGTON TO WHORLEY SETTING OUT POINTS

SOP NO.	EASTING	NORTHING
0	401283.785	518132.993
40	401310.463	518162.797
80	401326.686	518198.219
120	401336.810	518236.916
160	401346.934	518275.614
200	401357.058	518314.311
240	401367.182	518353.009
280	401377.306	518391.706
320	401387.431	518430.404
360	401397.555	518469.102
400	401407.679	518507.799
440	401417.803	518546.497
480	401427.927	518585.194



LONGITUDINAL SECTION
 HORIZONTAL SCALE 1:1000 VERTICAL SCALE 1:200



KEY PLAN
 SCALE : NTS

Drawing Status: FOR REVIEW BY LEAD APPOINTED PARTY

Suitability: S4

Rev.	Description	Date	Drawn	Chk'd	App'd
P04	FOR REVIEW	20.11.2023	AJ	RH	SK
P03	FOR REVIEW	18.09.2023	AJ	RH	SK
P02	FOR REVIEW	26.07.2023	AJ	RH	SK
P01	REVIEW AND COMMENTS	25.04.2023	AJ	SM	SK

Note:-
 IF THIS DRAWING IS FOUND TO BE IN ANY WAY INACCURATE, PLEASE ADVISE THE RECORD OFFICE IMMEDIATELY AND COMPLETE AN AMENDMENT FORM.



CONTRACTOR: FARRANS
REF. NO.: WN019/0205-4.11
I.D. PROJECT NO.: WN019/0205

Drawing Title:
 TEES STRATEGIC TRANSFER MAIN
 LARTINGTON WTW TO WHORLEY SR
 PLAN AND LONGITUDINAL SECTION

Dwg No:
 SZ14-T15A-PR1-M1-001-DWG-CST-G04-001

Sheet:	Date:	Sheet:	Scale:	Rev No:
1 OF 23	20.11.2023	A1	AS SHOWN	P04