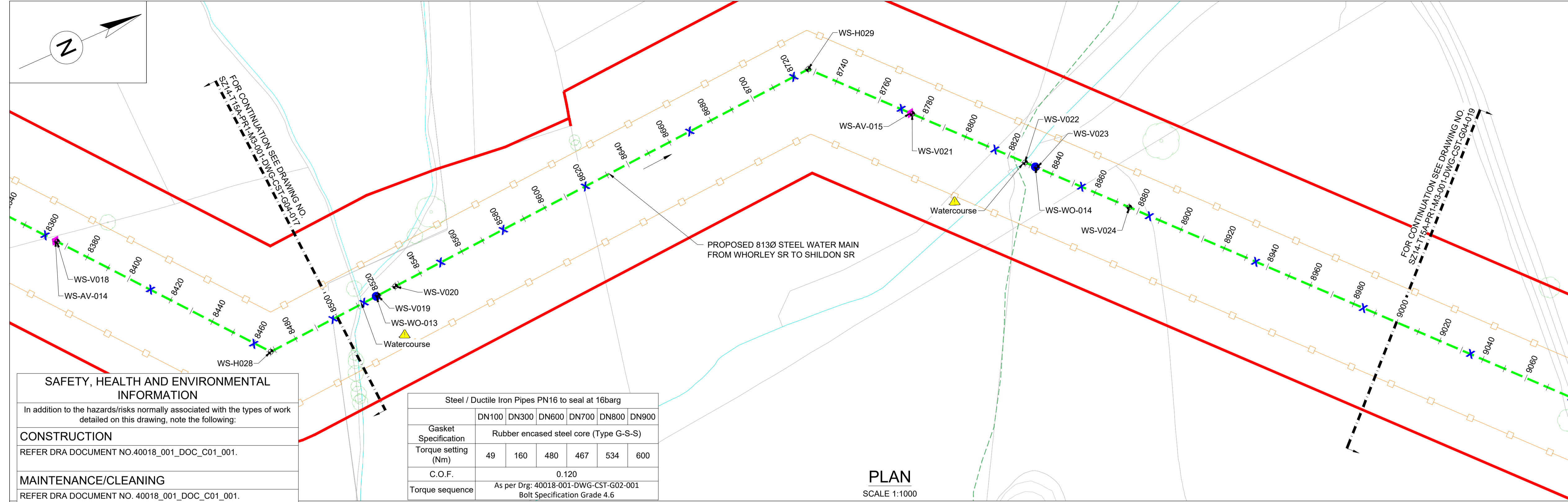


- LEGEND:**
- PLANNING BOUNDARY
 - WORKING BOUNDARY
 - WATERCOURSE
 - PROPOSED PIPE ROUTE
 - PUBLIC RIGHT OF WAYS
 - TREE
 - L.V.
 - A.V.
 - W.O.
 - SETTING OUT POINT
 - ELECTRIC POLE
 - HAZARD IDENTIFIER
 - CLAY STANK

- EXISTING SERVICES:**
- WATER MAIN
 - SEWER MAIN
 - ELECTRIC-HV
 - ELECTRIC-HV OVERHEAD
 - ELECTRIC-LV
 - ELECTRIC-LV OVERHEAD
 - ELECTRIC LINE
 - BT UNDERGROUND
 - BT OVERHEAD
 - BT-VIRGIN MEDIA
 - GAS-LOW PRESSURE
 - GAS-MEDIUM PRESSURE
 - STORM WATER MAIN
 - STREET LIGHT CABLE
 - GAS WORKING SAFETY ZONE
 - POWER LINE SAFETY ZONE

REFERENCE:
SZ14-T15A-PR1-M3-001-DWG-CST-G04-034: GENERAL NOTES / REFERENCES
40018-001-DWG-CST-G02-001: FLANGE MANAGEMENT DRAWING



SAFETY, HEALTH AND ENVIRONMENTAL INFORMATION
In addition to the hazards/risks normally associated with the types of work detailed on this drawing, note the following:

CONSTRUCTION
REFER DRA DOCUMENT NO.40018_001_DOC_C01_001.

MAINTENANCE/CLEANING
REFER DRA DOCUMENT NO. 40018_001_DOC_C01_001.

DECOMMISSIONING/DEMOLITION
REFER DRA DOCUMENT NO. 40018_001_DOC_C01_001.

It is assumed that all works will be carried out by a competent contractor working, where appropriate, to an approved method statement

Steel / Ductile Iron Pipes PN16 to seal at 16barg						
Gasket Specification	DN100	DN300	DN600	DN700	DN800	DN900
Rubber encased steel core (Type G-S-S)						
Torque setting (Nm)	49	160	480	467	534	600
C.O.F.	0.120					
Torque sequence	As per Drg: 40018-001-DWG-CST-G02-001 Bolt Specification Grade 4.6					

WHORLEY TO SHILDON SETTING OUT POINTS

CHAINAGE (m)	EASTING	NORTHING
8520	417267.975	521292.792
8560	417265.400	521332.709
8600	417262.825	521372.626
8640	417260.251	521412.543
8680	417257.676	521452.461
8720	417255.101	521492.378
8760	417278.962	521521.716
8800	417308.363	521548.838
8840	417337.764	521575.959
8880	417367.165	521603.081
8920	417396.566	521630.203
8960	417425.967	521657.324
9000	417455.368	521684.446

HORIZONTAL BEND

SOP NO.	EASTING	NORTHING
WS-H029	417254.655	521499.293

VERTICAL BEND

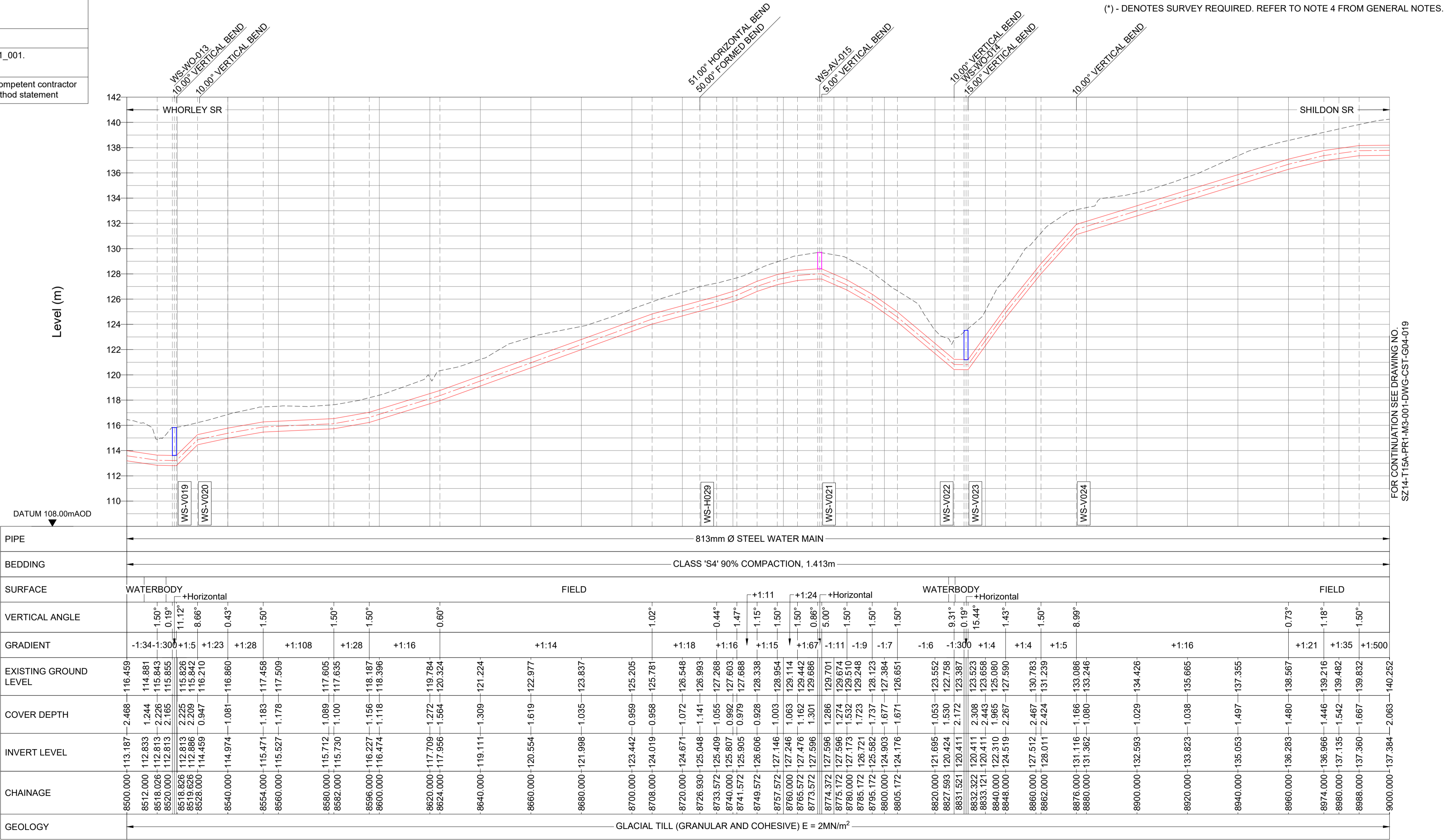
SOP NO.	EASTING	NORTHING
WS-V019	417267.999	521292.419
WS-V020	417267.460	521300.776
WS-V021	417290.114	521532.003
WS-V022	417328.645	521567.547
WS-V023	417332.708	521571.295
WS-V024	417364.179	521600.327

WASHOUT

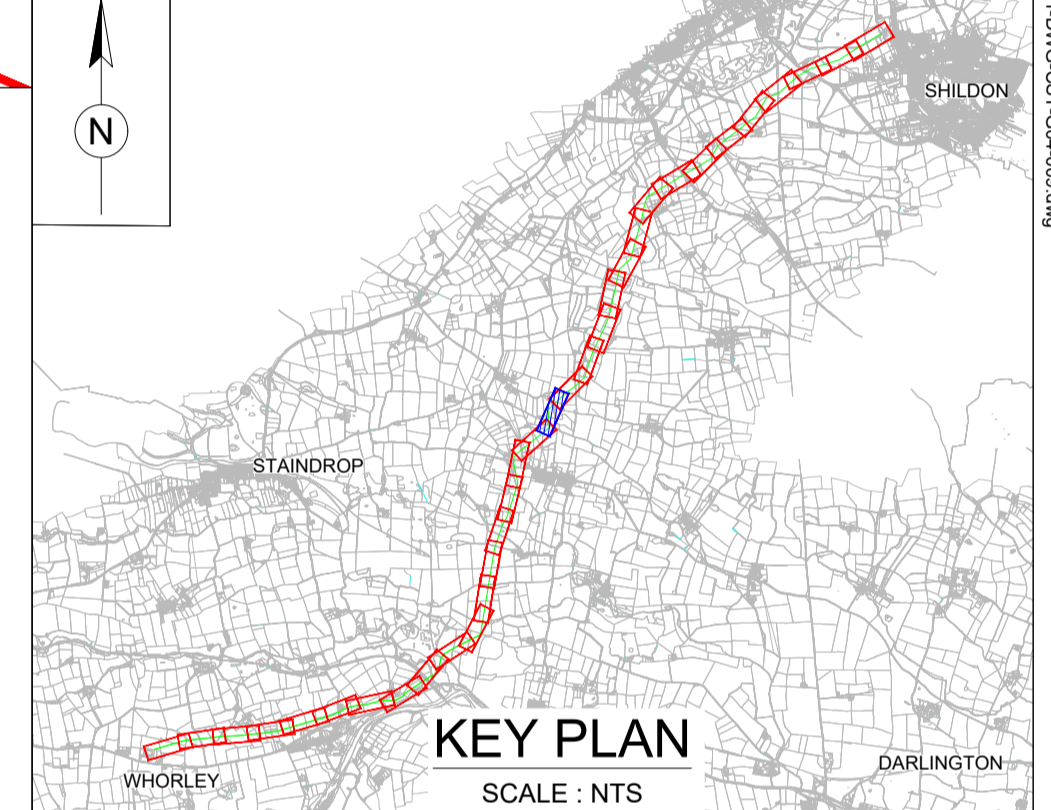
SOP NO.	EASTING	NORTHING
WS-WO-013	417268.051	521291.621
WS-WO-014	417332.120	521570.753

AIRVALVE

SOP NO.	EASTING	NORTHING
WS-AV-015	417289.526	521531.460



LONGITUDINAL SECTION
HORIZONTAL SCALE 1:1000 VERTICAL SCALE 1:200



Drawing Status: FOR REVIEW BY LEAD APPOINTED PARTY
Suitability: S4

P06	FOR REVIEW	17.11.2023	AJ	RH	SK
P05	FOR REVIEW	10.10.2023	AJ	RH	SK
P04	FOR REVIEW	18.09.2023	AJ	RH	SK
P03	FOR REVIEW	26.07.2023	AJ	RH	SK
P02	FOR REVIEW	30.06.2023	AJ	RH	SK

Note:-
IF THIS DRAWING IS FOUND TO BE IN ANY WAY INACCURATE, PLEASE ADVISE THE RECORD OFFICE IMMEDIATELY AND COMPLETE AN AMENDMENT FORM.



CONTRACTOR: FARRANS
REF. NO.: WN019/0205-4.11
I.D. PROJECT NO.: WN019/0205

Drawing Title:
TEES STRATEGIC TRANSFER MAIN
WHORLEY SR TO SHILDON SR
PLAN AND LONGITUDINAL SECTION

Dwg No: SZ14-T15A-PR1-M3-001-DWG-CST-G04-018

Sheet:	Date:	Sheet:	Scale:	Rev No:
18 OF 33	17.11.2023	A1	AS SHOWN	P06