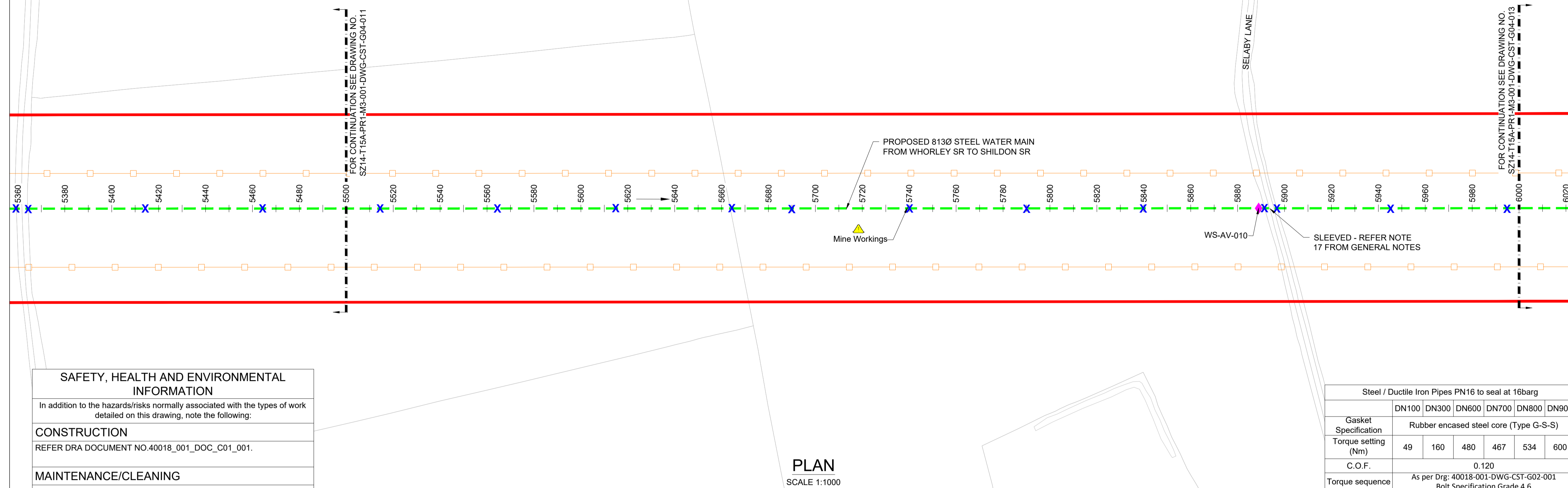


LEGEND:

- PLANNING BOUNDARY
- WORKING BOUNDARY
- WATERCOURSE
- PROPOSED PIPE ROUTE
- PUBLIC RIGHT OF WAYS
- TREE
- L.V.
- A.V.
- W.O.
- SETTING OUT POINT
- ELECTRIC POLE
- HAZARD IDENTIFIER
- CLAY STANK

EXISTING SERVICES:

- W WATER MAIN
- SSE SEWER MAIN
- HV ELECTRIC-HV
- LV ELECTRIC-LV OVERHEAD
- E ELECTRIC LINE
- BTR BT UNDERGROUND
- T BT OVERHEAD
- VM BT-VIRGIN MEDIA
- LPG GAS-LOW PRESSURE
- MPG GAS-MEDIUM PRESSURE
- SWS STORM WATER MAIN
- SL STREET LIGHT CABLE
- GAS WORKING SAFETY ZONE
- POWER LINE SAFETY ZONE



SAFETY, HEALTH AND ENVIRONMENTAL INFORMATION
 In addition to the hazards/risks normally associated with the types of work detailed on this drawing, note the following:

CONSTRUCTION
 REFER DRA DOCUMENT NO.40018_001_DOC_C01_001.

MAINTENANCE/CLEANING
 REFER DRA DOCUMENT NO. 40018_001_DOC_C01_001.

DECOMMISSIONING/DEMOLITION
 REFER DRA DOCUMENT NO. 40018_001_DOC_C01_001.

It is assumed that all works will be carried out by a competent contractor working, where appropriate, to an approved method statement

PLAN
 SCALE 1:1000

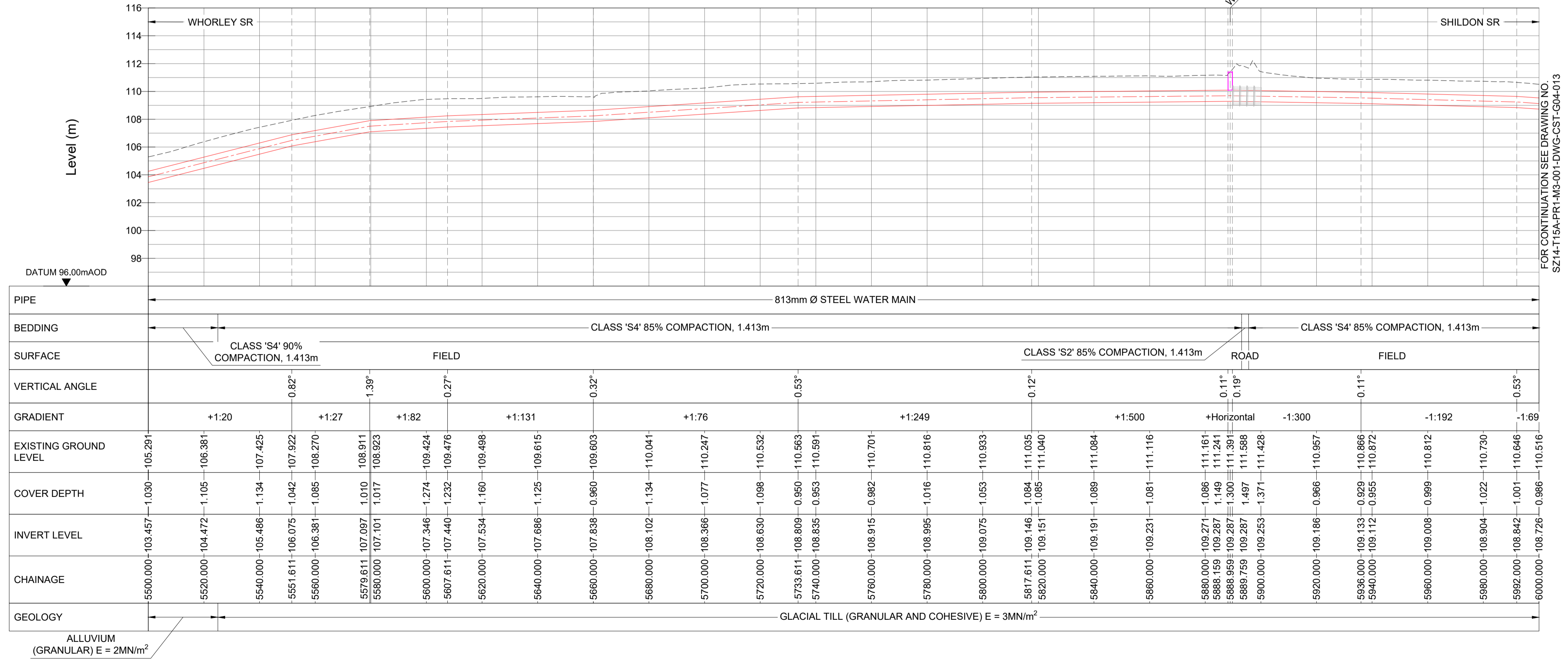
(*) - DENOTES SURVEY REQUIRED. REFER TO NOTE 4 FROM GENERAL NOTES.

REFERENCE:
 SZ14-T15A-PR1-M3-001-DWG-CST-G04-034: GENERAL NOTES / REFERENCES
 40018-001-DWG-CST-G02-001: FLANGE MANAGEMENT DRAWING

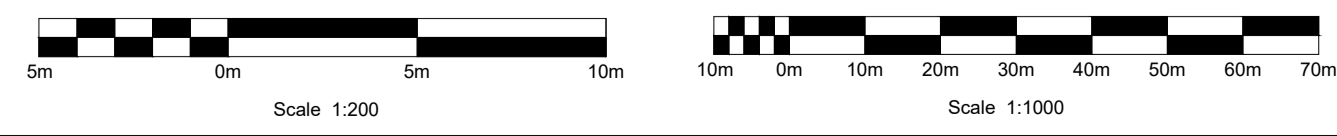
KEY PLAN
 SCALE : NTS

WHORLEY TO SHILDON SETTING OUT POINTS

CHAINAGE (m)	EASTING	NORTHING
5520	416340.880	518610.518
5560	416347.371	518649.988
5600	416353.862	518689.458
5640	416360.353	518728.928
5680	416366.844	518768.398
5720	416373.335	518807.868
5760	416379.826	518847.337
5800	416386.317	518886.807
5840	416392.809	518926.277
5880	416399.300	518965.747
5920	416405.791	519005.217
5960	416412.282	519044.686
6000	416418.773	519084.156



LONGITUDINAL SECTION
 HORIZONTAL SCALE 1:1000 VERTICAL SCALE 1:200



Drawing Status:
 FOR REVIEW BY LEAD APPOINTED PARTY

Suitability:
 S4

Rev.	Description	Date	Drawn	Chk'd	App'd
P06	FOR REVIEW	17.11.2023	AJ	RH	SK
P05	FOR REVIEW	10.10.2023	AJ	RH	SK
P04	FOR REVIEW	18.09.2023	AJ	RH	SK
P03	FOR REVIEW	26.07.2023	AJ	RH	SK
P02	FOR REVIEW	30.06.2023	AJ	RH	SK

Note:-
 IF THIS DRAWING IS FOUND TO BE IN ANY WAY INACCURATE, PLEASE ADVISE THE RECORD OFFICE IMMEDIATELY AND COMPLETE AN AMENDMENT FORM.



CONTRACTOR: FARRANS
REF. NO.: WN019/0205-4.11
I.D. PROJECT NO.: WN019/0205

Drawing Title:
 TEES STRATEGIC TRANSFER MAIN
 WHORLEY SR TO SHILDON SR
 PLAN AND LONGITUDINAL SECTION

Dwg No:
 SZ14-T15A-PR1-M3-001-DWG-CST-G04-012

Sheet: 12 OF 33	Date: 17.11.2023	Sheet: A1	Scale: AS SHOWN	Rev No: P06
---------------------------	----------------------------	---------------------	---------------------------	-----------------------