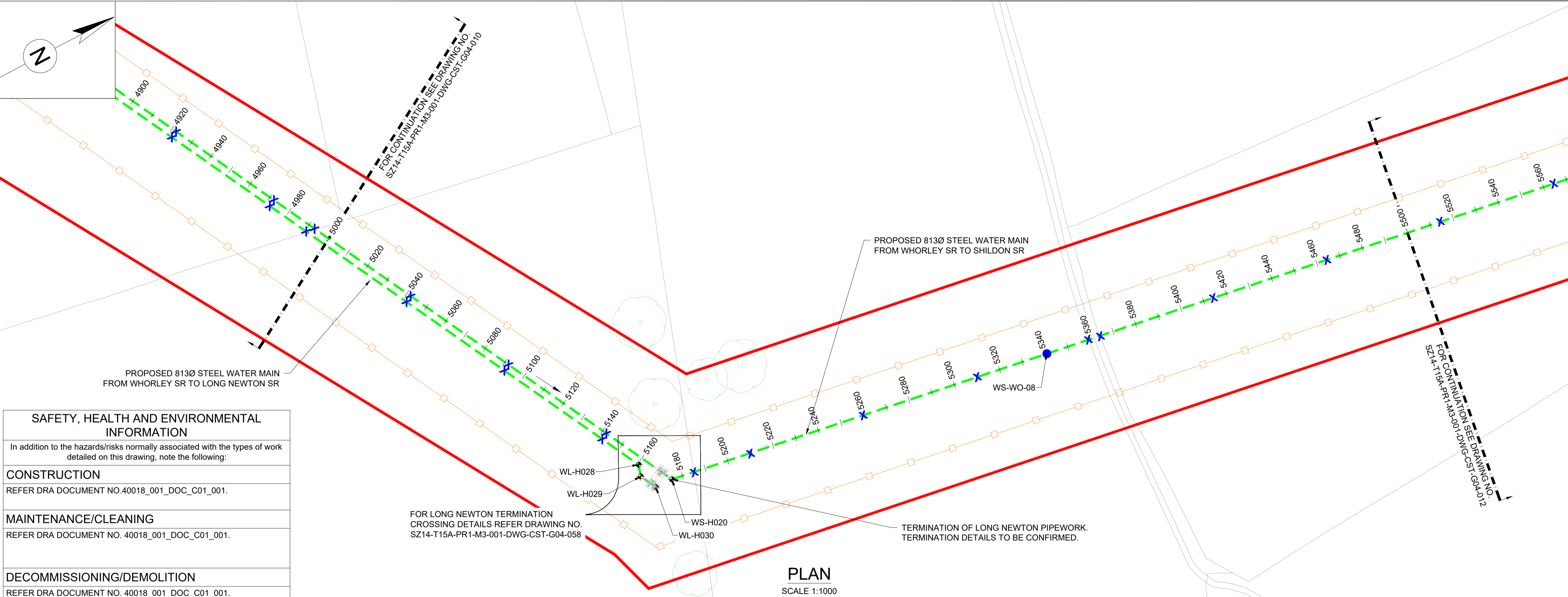
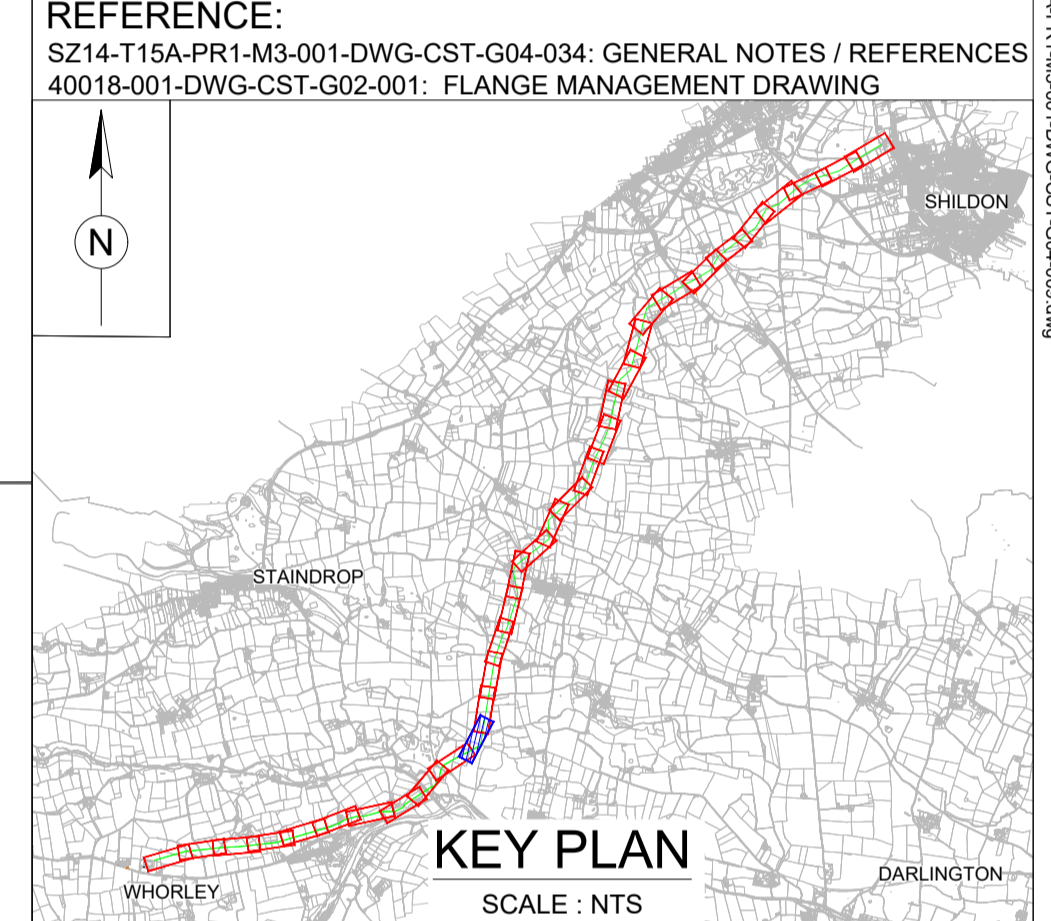


- LEGEND:**
- PLANNING BOUNDARY
 - WORKING BOUNDARY
 - WATERCOURSE
 - PROPOSED PIPE ROUTE
 - PUBLIC RIGHT OF WAYS
 - TREE
 - L.V.
 - A.V.
 - W.O.
 - SETTING OUT POINT
 - ELECTRIC POLE
 - HAZARD IDENTIFIER
 - CLAY STANK
- EXISTING SERVICES:**
- WATER MAIN
 - SEWER MAIN
 - ELECTRIC-HV
 - ELECTRIC-HV OVERHEAD
 - ELECTRIC-LV
 - ELECTRIC-LV OVERHEAD
 - ELECTRIC LINE
 - BT UNDERGROUND
 - BT OVERHEAD
 - BT-VIRGIN MEDIA
 - GAS-LOW PRESSURE
 - GAS-MEDIUM PRESSURE
 - STORM WATER MAIN
 - STREET LIGHT CABLE
 - GAS WORKING SAFETY ZONE
 - POWER LINE SAFETY ZONE

- REFERENCE:**
 SZ14-T15A-PR1-M3-001-DWG-CST-G04-034: GENERAL NOTES / REFERENCES
 40018-001-DWG-CST-G02-001: FLANGE MANAGEMENT DRAWING



SAFETY, HEALTH AND ENVIRONMENTAL INFORMATION

In addition to the hazards/risks normally associated with the types of work detailed on this drawing, note the following:

CONSTRUCTION
 REFER DRA DOCUMENT NO. 40018_001_DOC_C01_001.

MAINTENANCE/CLEANING
 REFER DRA DOCUMENT NO. 40018_001_DOC_C01_001.

DECOMMISSIONING/DEMOLITION
 REFER DRA DOCUMENT NO. 40018_001_DOC_C01_001.

It is assumed that all works will be carried out by a competent contractor working, where appropriate, to an approved method statement

PLAN
 SCALE 1:1000

(*) - DENOTES SURVEY REQUIRED. REFER TO NOTE 4 FROM GENERAL NOTES.

Steel / Ductile Iron Pipes PN16 to seal at 16bar

	DN100	DN300	DN600	DN700	DN800	DN900
Gasket Specification	Rubber encased steel core (Type G-S-S)					
Torque setting (Nm)	49	160	480	467	534	600
C.O.F.	0.120					
Torque sequence	As per Drg: 40018-001-DWG-CST-G02-001 Bolt Specification Grade 4.6					

WHORLEY TO SHILDON SETTING OUT POINTS

CHAINAGE (m)	EASTING	NORTHING
5000	416128.836	518190.517
5040	416164.435	518208.757
5080	416200.034	518226.998
5120	416235.632	518245.239
5160	416271.231	518263.479
5200	416288.951	518294.760
5240	416295.442	518334.230
5280	416301.933	518373.700
5320	416308.424	518413.169
5360	416314.915	518452.639
5400	416321.406	518492.109
5440	416327.897	518531.579
5480	416334.388	518571.049

WHORLEY TO LONG NEWTON SETTING OUT POINTS

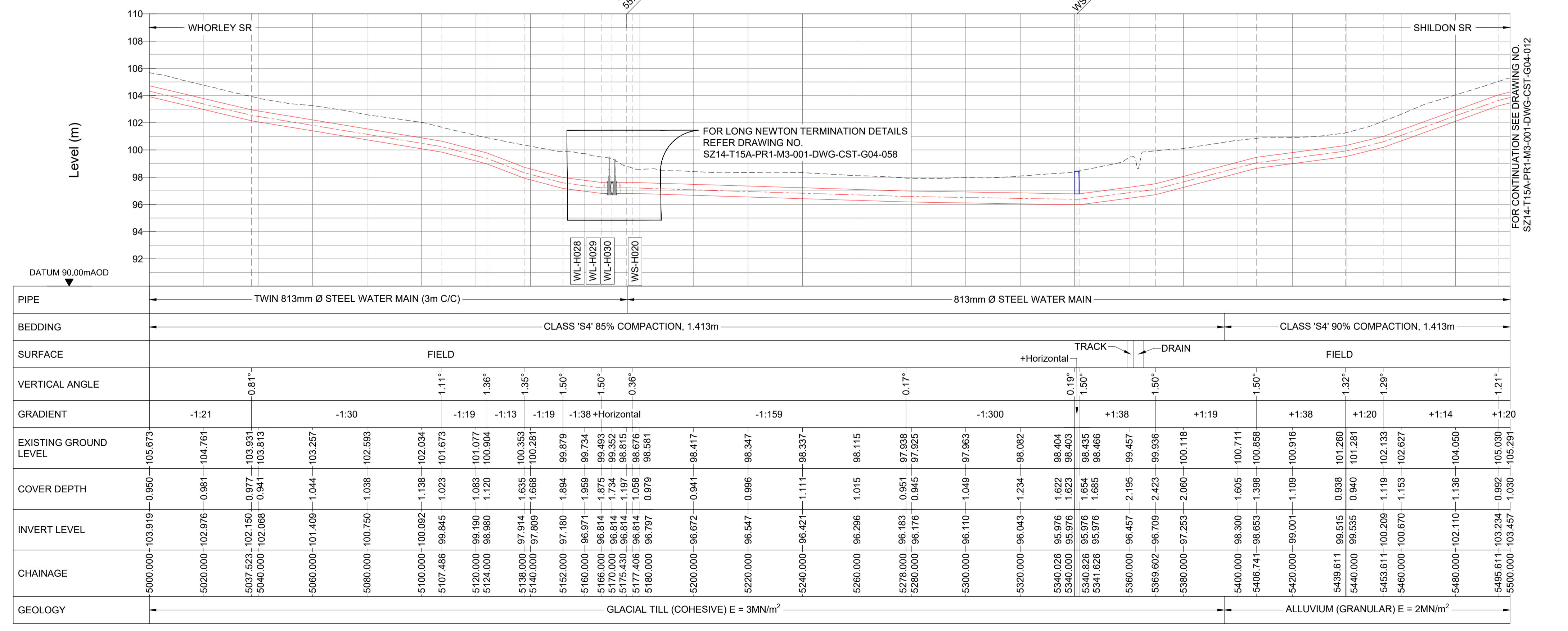
CHAINAGE (m)	EASTING	NORTHING
5000	416122.018	518183.652
5040	416157.617	518201.893
5080	416193.216	518220.134
5120	416228.814	518238.374
5160	416264.413	518256.615

HORIZONTAL BEND

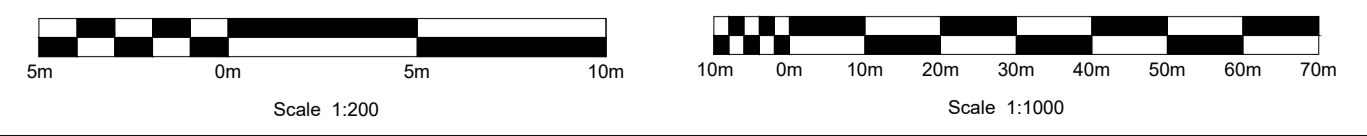
SOP NO.	EASTING	NORTHING
WS-H020	416284.963	518270.516
WL-H028	416273.011	518261.020
WL-H029	416277.739	518259.511
WL-H030	416284.632	518263.043

WASHOUT

SOP NO.	EASTING	NORTHING
WS-WO-08	416311.804	518433.719



LONGITUDINAL SECTION
 HORIZONTAL SCALE 1:1000 VERTICAL SCALE 1:200



Drawing Status:
 FOR REVIEW BY LEAD APPOINTED PARTY

Suitability:
 S4

P06	FOR REVIEW	17.11.2023	AJ	RH	SK
P05	FOR REVIEW	10.10.2023	AJ	RH	SK
P04	FOR REVIEW	18.09.2023	AJ	RH	SK
P03	FOR REVIEW	26.07.2023	AJ	RH	SK
P02	FOR REVIEW	30.06.2023	AJ	RH	SK

Note:-
 IF THIS DRAWING IS FOUND TO BE IN ANY WAY INACCURATE, PLEASE ADVISE THE RECORD OFFICE IMMEDIATELY AND COMPLETE AN AMENDMENT FORM.



CONTRACTOR: FARRANS
REF. NO.: WN019/0205-4.11
I.D. PROJECT NO.: WN019/0205

Drawing Title:
 TEES STRATEGIC TRANSFER MAIN
 WHORLEY SR TO SHILDON SR
 PLAN AND LONGITUDINAL SECTION

Dwg No:
 SZ14-T15A-PR1-M3-001-DWG-CST-G04-011

Sheet:	Date:	Sheet:	Scale:	Rev No:
11 OF 33	17.11.2023	A1	AS SHOWN	P06