

- LEGEND:**
- PLANNING BOUNDARY
 - WORKING BOUNDARY
 - WATERCOURSE
 - PROPOSED PIPE ROUTE
 - PUBLIC RIGHT OF WAY
 - TREE
 - L.V.
 - A.V.
 - W.O.
 - ⊕ XXXX SETTING OUT POINT
 - EP ELECTRIC POLE
 - ▲ HAZARD IDENTIFIER
 - ✕ CLAY STANK

- EXISTING SERVICES:**
- W — WATER MAIN
 - SSE — SEWER MAIN
 - HV — ELECTRIC-HV
 - HV — ELECTRIC-HV OVERHEAD
 - LV — ELECTRIC-LV
 - LV — ELECTRIC-LV OVERHEAD
 - E — ELECTRIC
 - BTR — BT UNDERGROUND
 - T — BT OVERHEAD
 - VM — BT-VIRGIN MEDIA
 - LPG — GAS-LOW PRESSURE
 - MPG — GAS-MEDIUM PRESSURE
 - SWS — STORM WATER MAIN
 - SL — STREET LIGHT CABLE
 - ▨ GAS WORKING SAFETY ZONE
 - ▨ POWER LINE SAFETY ZONE

REFERENCE:
 SZ14-T15A-PR1-M1-001-DWG-CST-G04-029: GENERAL NOTES / REFERENCES
 40018-001-DWG-CST-G02-001: FLANGE MANAGEMENT DRAWING



Drawing Status: FOR REVIEW BY LEAD APPOINTED PARTY
Suitability: S4

Rev.	Description	Date	Drawn	Chk'd	App'd
P04	FOR REVIEW	20.11.2023	AJ	RH	SK
P03	FOR REVIEW	18.09.2023	AJ	RH	SK
P02	FOR REVIEW	26.07.2023	AJ	RH	SK
P01	REVIEW AND COMMENTS	25.04.2023	AJ	SM	SK

Note:-
 IF THIS DRAWING IS FOUND TO BE IN ANY WAY INACCURATE, PLEASE ADVISE THE RECORD OFFICE IMMEDIATELY AND COMPLETE AN AMENDMENT FORM.

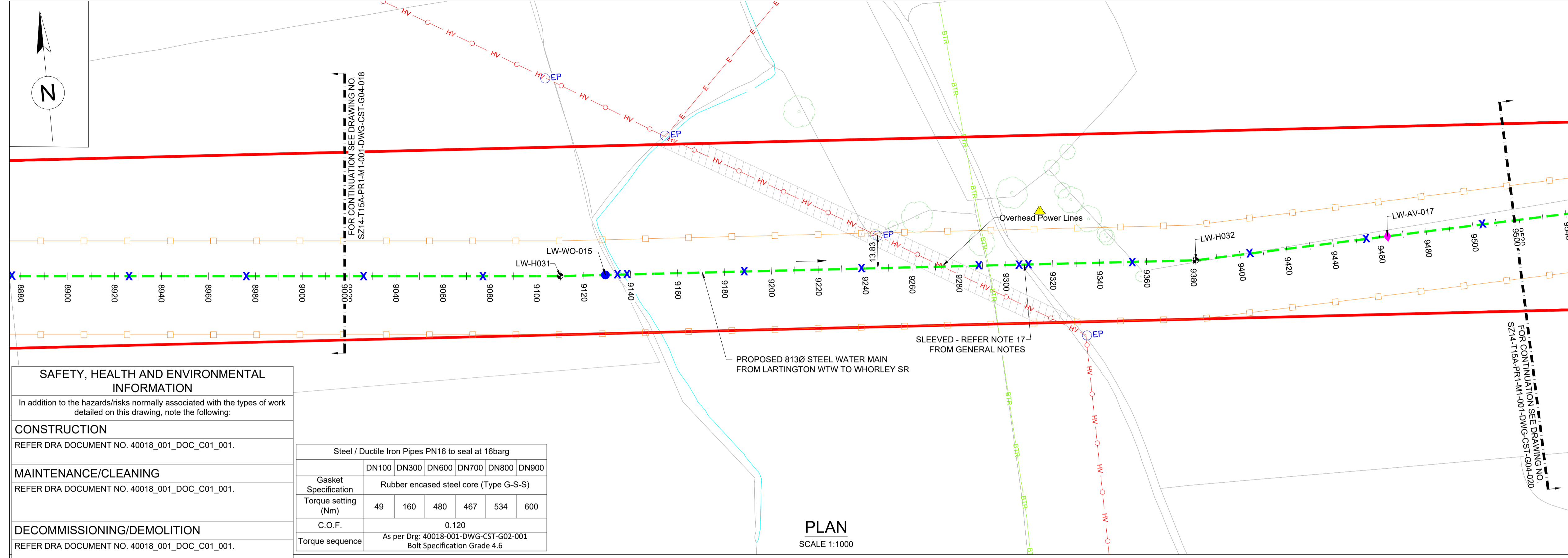


CONTRACTOR: FARRANS
REF. NO.: WN019/0205-4.11
I.D. PROJECT NO.: WN019/0205

Drawing Title:
 TEES STRATEGIC TRANSFER MAIN
 LARTINGTON WTW TO WHORLEY SR
 PLAN AND LONGITUDINAL SECTION

Dwg No:
 SZ14-T15A-PR1-M1-001-DWG-CST-G04-019

Sheet: 19 OF 23	Date: 20.11.2023	Sheet: A1	Scale: AS SHOWN	Rev No: P04
------------------------	-------------------------	------------------	------------------------	--------------------



SAFETY, HEALTH AND ENVIRONMENTAL INFORMATION
 In addition to the hazards/risks normally associated with the types of work detailed on this drawing, note the following:

CONSTRUCTION
 REFER DRA DOCUMENT NO. 40018_001_DOC_C01_001.

MAINTENANCE/CLEANING
 REFER DRA DOCUMENT NO. 40018_001_DOC_C01_001.

DECOMMISSIONING/DEMOLITION
 REFER DRA DOCUMENT NO. 40018_001_DOC_C01_001.

It is assumed that all works will be carried out by a competent contractor working, where appropriate, to an approved method statement

Steel / Ductile Iron Pipes PN16 to seal at 16bar					
Gasket Specification	DN100	DN300	DN600	DN700	DN900
Rubber encased steel core (Type G-S-S)					
Torque setting (Nm)	49	160	480	467	600
C.O.F.	0.120				
Torque sequence	As per Drg: 40018-001-DWG-CST-G02-001 Bolt Specification Grade 4.6				

LARTINGTON TO WHORLEY SETTING OUT POINTS

Chainage	Easting	Northing
9000	408961.182	517173.553
9040	409000.985	517169.584
9080	409040.787	517165.614
9120	409080.611	517161.892
9160	409120.500	517158.910
9200	409160.389	517155.927
9240	409200.277	517152.945
9280	409240.166	517149.962
9320	409280.054	517146.980
9360	409319.943	517143.997
9400	409359.832	517141.014
9440	409399.721	517138.031
9480	409439.610	517135.048

HORIZONTAL BEND

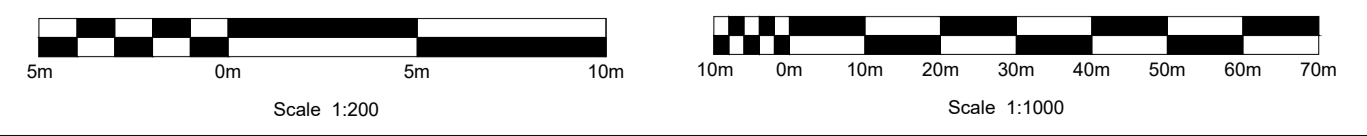
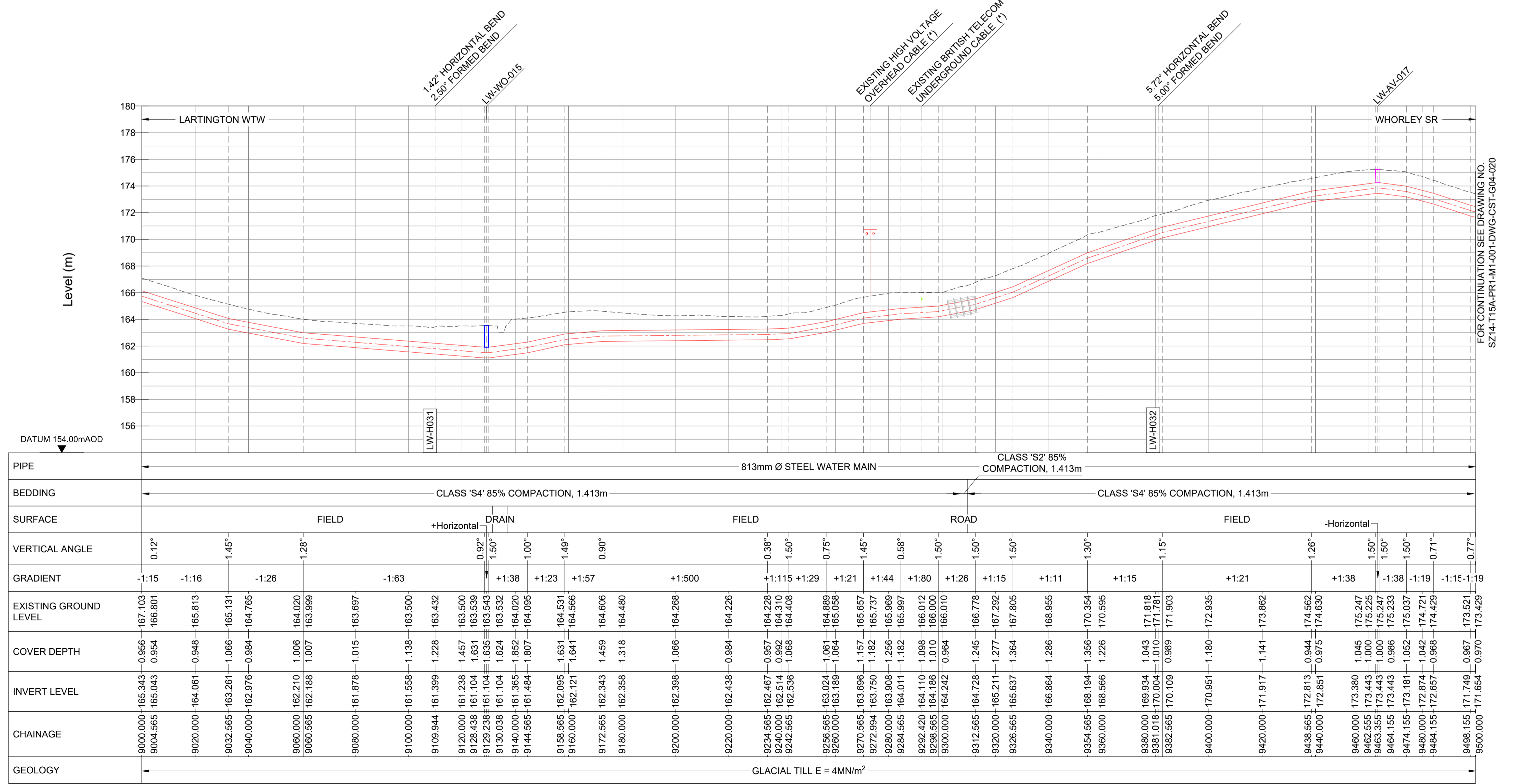
SOP NO.	EASTING	NORTHING
LW-H031	409070.583	517162.642
LW-H032	409340.902	517142.430

AIRVALVE

SOP NO.	EASTING	NORTHING
LW-AV-017	409423.251	517144.500

WASHOUT

SOP NO.	EASTING	NORTHING
LW-WO-015	409089.824	517161.203



(*) - DENOTES SURVEY REQUIRED. REFER TO NOTE 4 FROM GENERAL NOTES.