

- LEGEND:**
- PLANNING BOUNDARY
 - WORKING BOUNDARY
 - WATERCOURSE
 - PROPOSED PIPE ROUTE
 - PUBLIC RIGHT OF WAY
 - TREE
 - L.V.
 - A.V.
 - W.O.
 - SETTING OUT POINT
 - ELECTRIC POLE
 - HAZARD IDENTIFIER
 - CLAY STANK

- EXISTING SERVICES:**
- WATER MAIN
 - SEWER MAIN
 - ELECTRIC-HV
 - ELECTRIC-HV OVERHEAD
 - ELECTRIC-LV
 - ELECTRIC-LV OVERHEAD
 - ELECTRIC
 - BT UNDERGROUND
 - BT OVERHEAD
 - BT-VIRGIN MEDIA
 - GAS-LOW PRESSURE
 - GAS-MEDIUM PRESSURE
 - STORM WATER MAIN
 - STREET LIGHT CABLE
 - GAS WORKING SAFETY ZONE
 - POWER LINE SAFETY ZONE

REFERENCE:
 SZ14-T15A-PR1-M1-001-DWG-CST-G04-029: GENERAL NOTES / REFERENCES
 40018-001-DWG-CST-G02-001: FLANGE MANAGEMENT DRAWING



Drawing Status: FOR REVIEW BY LEAD APPOINTED PARTY
Suitability: S4

Rev.	Description	Date	Drawn	Chk'd	App'd
P04	FOR REVIEW	20.11.2023	AJ	RH	SK
P03	FOR REVIEW	15.09.2023	AJ	RH	SK
P02	FOR REVIEW	26.07.2023	AJ	RH	SK
P01	REVIEW AND COMMENTS	25.04.2023	AJ	SM	SK

Note:-
 IF THIS DRAWING IS FOUND TO BE IN ANY WAY INACCURATE, PLEASE ADVISE THE RECORD OFFICE IMMEDIATELY AND COMPLETE AN AMENDMENT FORM.

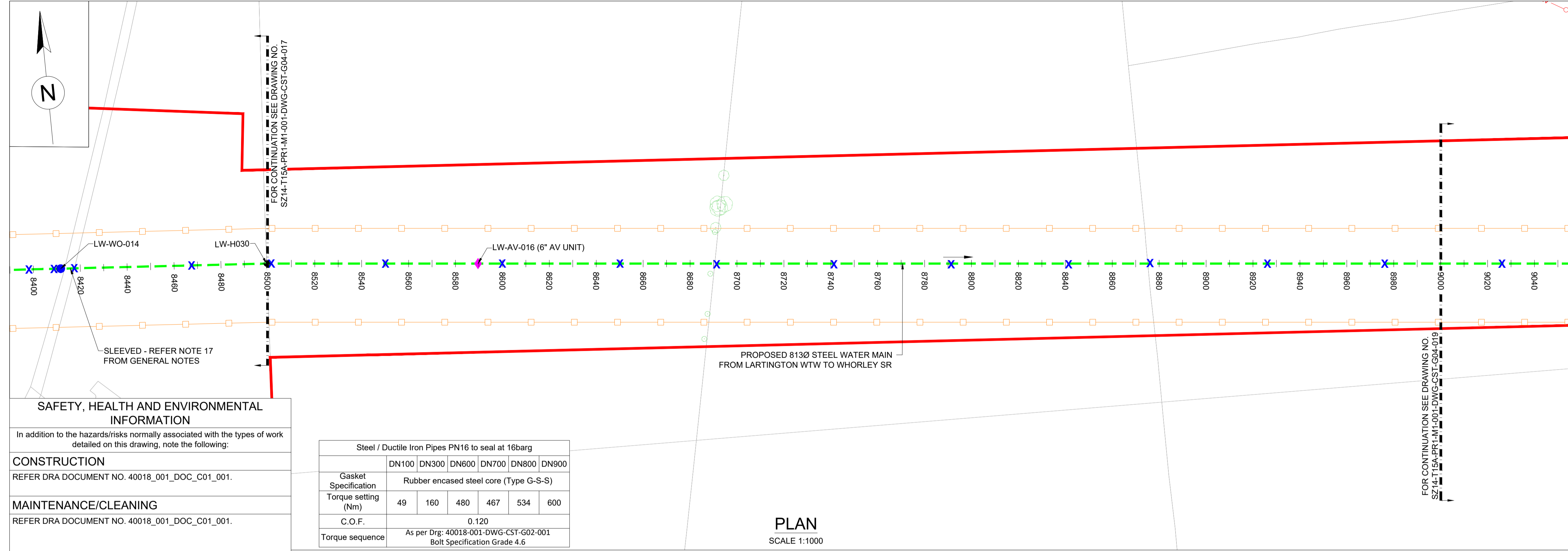


CONTRACTOR: FARRANS
REF. NO.: WN019/0205-4.11
I.D. PROJECT NO.: WN019/0205

Drawing Title:
 TEES STRATEGIC TRANSFER MAIN
 LARTINGTON WTW TO WHORLEY SR
 PLAN AND LONGITUDINAL SECTION

Dwg No:
 SZ14-T15A-PR1-M1-001-DWG-CST-G04-018

Sheet: 18 OF 23 | **Date:** 20.11.2023 | **Sheet:** A1 | **Scale:** AS SHOWN | **Rev No:** P04



SAFETY, HEALTH AND ENVIRONMENTAL INFORMATION
 In addition to the hazards/risks normally associated with the types of work detailed on this drawing, note the following:

CONSTRUCTION
 REFER DRA DOCUMENT NO. 40018_001_DOC_C01_001.

MAINTENANCE/CLEANING
 REFER DRA DOCUMENT NO. 40018_001_DOC_C01_001.

DECOMMISSIONING/DEMOLITION
 REFER DRA DOCUMENT NO. 40018_001_DOC_C01_001.

It is assumed that all works will be carried out by a competent contractor working, where appropriate, to an approved method statement

Steel / Ductile Iron Pipes PN16 to seal at 16barg						
Gasket Specification	DN100	DN300	DN600	DN700	DN800	DN900
Rubber encased steel core (Type G-S-S)						
Torque setting (Nm)	49	160	480	467	534	600
C.O.F.	0.120					
Torque sequence	As per Drg: 40018-001-DWG-CST-G02-001 Bolt Specification Grade 4.6					

PLAN
 SCALE 1:1000

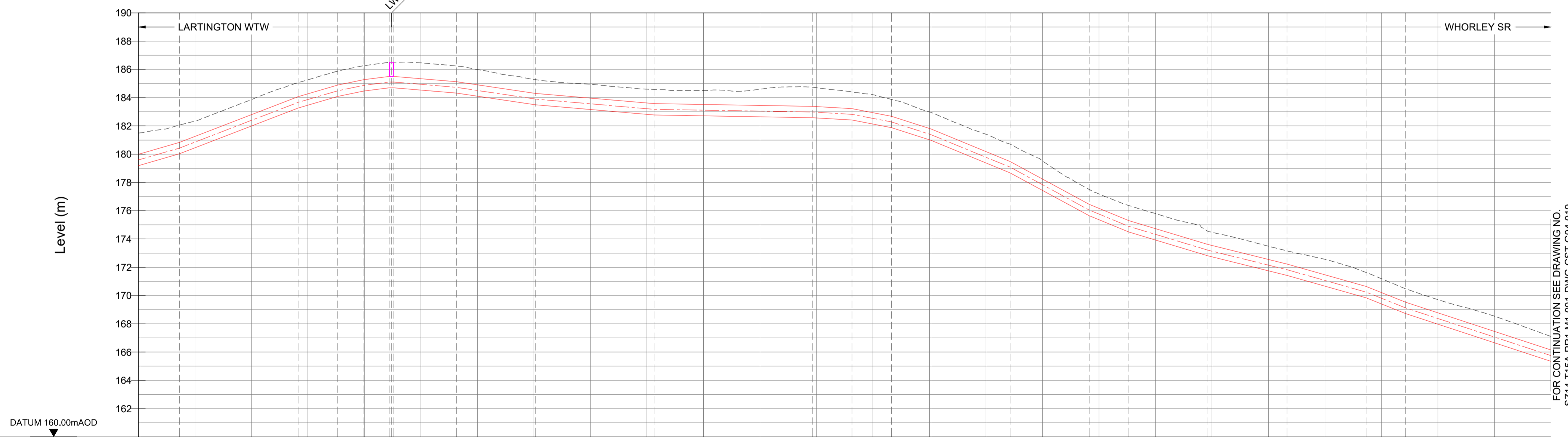
(*) - DENOTES SURVEY REQUIRED. REFER TO NOTE 4 FROM GENERAL NOTES.

LARTINGTON TO WHORLEY SETTING OUT POINTS

Easting	Northing	Easting	Northing
8520	408483.552	517221.190	
8560	408523.354	517217.220	
8600	408563.157	517213.251	
8640	408602.959	517209.281	
8680	408642.762	517205.311	
8720	408682.564	517201.341	
8760	408722.367	517197.372	
8800	408762.169	517193.402	
8840	408801.972	517189.432	
8880	408841.774	517185.462	
8920	408881.577	517181.493	
8960	408921.380	517177.523	
9000	408961.182	517173.553	

AIRVALVE

SOP NO.	EASTING	NORTHING
LW-AV-016	408552.803	517214.283



PIPE	813mm Ø STEEL WATER MAIN																																														
BEDDING	CLASS 'S4' 85% COMPACTION, 1.413m																																														
SURFACE	FIELD																																														
VERTICAL ANGLE	++Horizontal																																														
GRADIENT	++Horizontal																																														
EXISTING GROUND LEVEL	181.500	181.507	182.060	182.322	183.854	185.060	185.260	185.877	186.258	186.264	186.500	186.505	186.508	186.457	186.236	185.984	185.294	185.277	184.593	184.500	184.587	184.587	184.739	184.701	184.405	184.208	183.869	182.954	181.409	180.707	179.523	177.507	177.190	176.372	175.799	174.536	174.476	173.487	173.161	172.561	171.631	171.185	170.477	169.707	168.539	167.103	
COVER DEPTH	1.49	1.09	1.06	0.98	0.96	1.50	0.97	0.73	0.70	0.80	1.30	1.83	1.26	1.16	1.12	1.9	1.12	1.17	1.20	1.18	1.13	1.15																									
INVERT LEVEL	179.202	179.220	181.225	181.342	182.854	184.060	184.260	184.877	184.258	184.264	184.500	184.505	184.508	184.457	184.236	183.984	183.294	183.277	182.593	182.500	182.587	182.587	182.739	182.701	182.405	182.208	181.869	180.954	180.409	180.707	179.523	177.507	177.190	176.372	175.799	174.536	174.476	173.487	173.161	172.561	171.631	171.185	170.477	169.707	168.539	167.103	
CHAINAGE	8500.000	8500.565	8514.565	8520.000	8540.000	8556.565	8560.000	8570.565	8579.795	8580.000	8588.795	8589.595	8590.395	8600.000	8612.565	8620.000	8640.000	8640.565	8660.000	8680.000	8682.565	8700.000	8720.000	8738.565	8740.000	8752.565	8760.000	8766.565	8780.000	8800.000	8808.565	8820.000	8836.565	8840.000	8850.565	8860.000	8878.565	8880.000	8900.000	8906.565	8920.000	8934.565	8940.000	8948.565	8960.000	8980.000	9000.000
GEOLOGY	GLACIAL TILL E = 4MN/m ²																																														

LONGITUDINAL SECTION
 HORIZONTAL SCALE 1:1000 VERTICAL SCALE 1:200

