

Gasket Specification	Steel / Ductile Iron Pipes PN16 to seal at 16barg					
	DN100	DN300	DN600	DN700	DN800	DN900
Torque setting (Nm)	49	160	480	467	534	600
C.O.F.	0.120					
Torque sequence	As per Drg: 40018-001-DWG-CST-G02-001 Bolt Specification Grade 4.6					

FARRANS A CBM COMPANY

ATKINS Member of the SNC-Lavalin Group

Atkins Limited
Chadwick House, Birchwood Park, Warrington, WA3 6AE
Direct: 01925 238319

LEGEND:

- PLANNING BOUNDARY
- WORKING BOUNDARY
- WATERCOURSE
- PROPOSED PIPE ROUTE
- PUBLIC RIGHT OF WAYS
- TREE
- L.V.
- A.V.
- W.O.
- SETTING OUT POINT
- ELECTRIC POLE
- HAZARD IDENTIFIER
- CLAY STANK

EXISTING SERVICES:

- WATER MAIN
- SEWER MAIN
- ELECTRIC-HV
- ELECTRIC-HV OVERHEAD
- ELECTRIC-LV
- ELECTRIC-LV OVERHEAD
- ELECTRIC LINE
- BT UNDERGROUND
- BT OVERHEAD
- BT-VIRGIN MEDIA
- GAS-LOW PRESSURE
- GAS-MEDIUM PRESSURE
- STORM WATER MAIN
- STREET LIGHT CABLE
- GAS WORKING SAFETY ZONE
- POWER LINE SAFETY ZONE

REFERENCE:
SZ14-T15A-PR1-M3-001-DWG-CST-G04-034: GENERAL NOTES / REFERENCES
40018-001-DWG-CST-G02-001: FLANGE MANAGEMENT DRAWING

SAFETY, HEALTH AND ENVIRONMENTAL INFORMATION

In addition to the hazards/risks normally associated with the types of work detailed on this drawing, note the following:

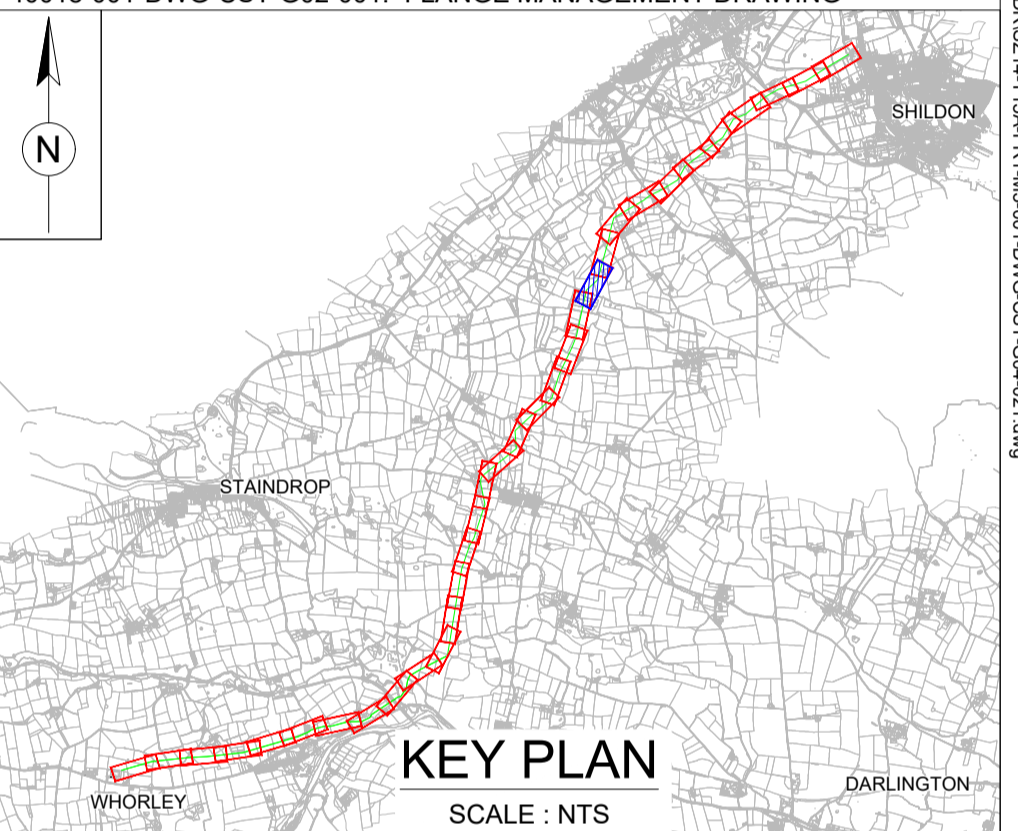
CONSTRUCTION
REFER DRA DOCUMENT NO. 40018_001_DOC_C01_001.

MAINTENANCE/CLEANING
REFER DRA DOCUMENT NO. 40018_001_DOC_C01_001.

DECOMMISSIONING/DEMOLITION
REFER DRA DOCUMENT NO. 40018_001_DOC_C01_001.

It is assumed that all works will be carried out by a competent contractor working, where appropriate, to an approved method statement

PLAN
SCALE 1:1000



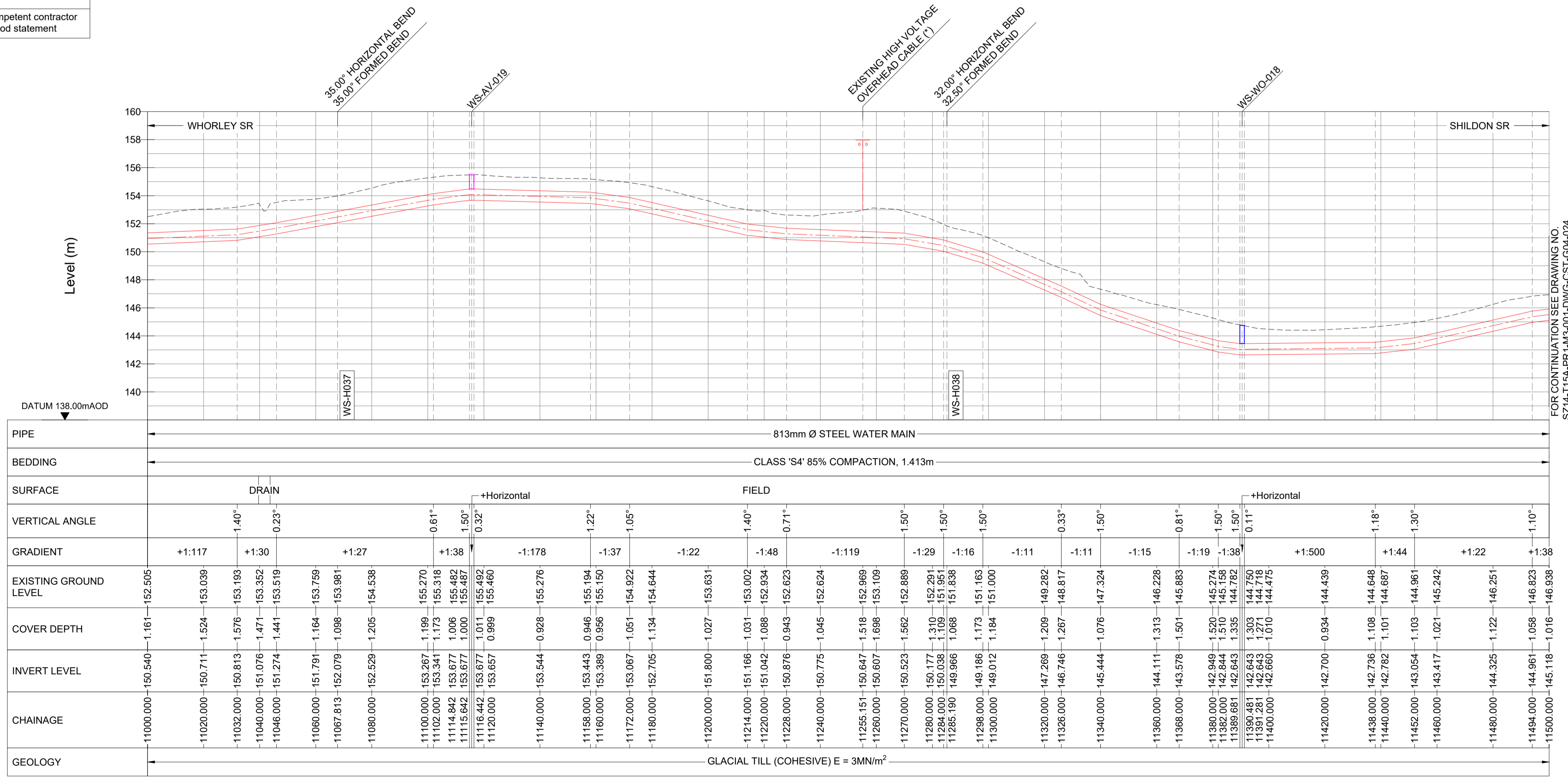
KEY PLAN
SCALE: NTS

(*) - DENOTES SURVEY REQUIRED. REFER TO NOTE 4 FROM GENERAL NOTES.

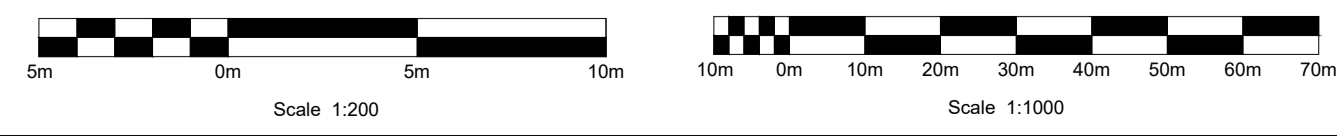
CHAINAGE (m)	EASTING	NORTHING
11000	418266.324	523449.442
11040	418274.852	523488.522
11080	418289.739	523523.959
11120	418319.140	523551.081
11160	418348.541	523578.202
11200	418377.942	523605.324
11240	418407.343	523632.446
11280	418436.744	523659.567
11320	418449.750	523696.661
11360	418460.311	523735.242
11400	418470.872	523773.822
11440	418481.433	523812.403
11480	418491.994	523850.983

SOP NO.	EASTING	NORTHING
WS-H037	418280.781	523515.696
WS-H038	418440.559	523663.087

SOP NO.	EASTING	NORTHING
WS-AV-019	418315.937	523548.126
WS-WO-018	418468.359	523764.641



LONGITUDINAL SECTION
HORIZONTAL SCALE 1:1000 VERTICAL SCALE 1:200



Drawing Status:
FOR REVIEW BY LEAD APPOINTED PARTY

Suitability:
S4

P06	FOR REVIEW	17.11.2023	AJ	RH	SK
P05	FOR REVIEW	10.10.2023	AJ	RH	SK
P04	FOR REVIEW	18.09.2023	AJ	RH	SK
P03	FOR REVIEW	26.07.2023	AJ	RH	SK
P02	FOR REVIEW	30.06.2023	AJ	RH	SK

Rev.	Description	Date	Drawn	Chk'd	App'd

Note:-
IF THIS DRAWING IS FOUND TO BE IN ANY WAY INACCURATE, PLEASE ADVISE THE RECORD OFFICE IMMEDIATELY AND COMPLETE AN AMENDMENT FORM.



CONTRACTOR: FARRANS
REF. NO.: WN019/0205-4.11
I.D. PROJECT NO.: WN019/0205

Drawing Title:
TEES STRATEGIC TRANSFER MAIN
WHORLEY SR TO SHILDON SR
PLAN AND LONGITUDINAL SECTION

Dwg No:
SZ14-T15A-PR1-M3-001-DWG-CST-G04-023

Sheet:	Date:	Sheet:	Scale:	Rev No:
23 OF 33	17.11.2023	A1	AS SHOWN	P06