

Steel / Ductile Iron Pipes PN16 to seal at 16 barg						
Gasket Specification	DN100	DN300	DN600	DN700	DN800	DN900
Torque setting (Nm)	49	160	480	467	534	600
C.O.F.	0.120					
Torque sequence	As per Drg: 40018-001-DWG-CST-G02-001 Bolt Specification Grade 4.6					

FARRANS A CBM COMPANY | **ATKINS** Member of the SNC-Lavalin Group

Atkins Limited
Chadwick House, Birchwood Park, Warrington, WA3 6AE
Direct: 01925 238319

LEGEND:

- PLANNING BOUNDARY
- WORKING BOUNDARY
- WATERCOURSE
- PROPOSED PIPE ROUTE
- PUBLIC RIGHT OF WAY
- TREE
- L.V.
- A.V.
- W.O.
- SETTING OUT POINT
- ELECTRIC POLE
- HAZARD IDENTIFIER
- CLAY STANK

SAFETY, HEALTH AND ENVIRONMENTAL INFORMATION

In addition to the hazards/risks normally associated with the types of work detailed on this drawing, note the following:

CONSTRUCTION
REFER DRA DOCUMENT NO.40018_001_DOC_C01_001.

MAINTENANCE/CLEANING
REFER DRA DOCUMENT NO. 40018_001_DOC_C01_001.

DECOMMISSIONING/DEMOLITION
REFER DRA DOCUMENT NO. 40018_001_DOC_C01_001.

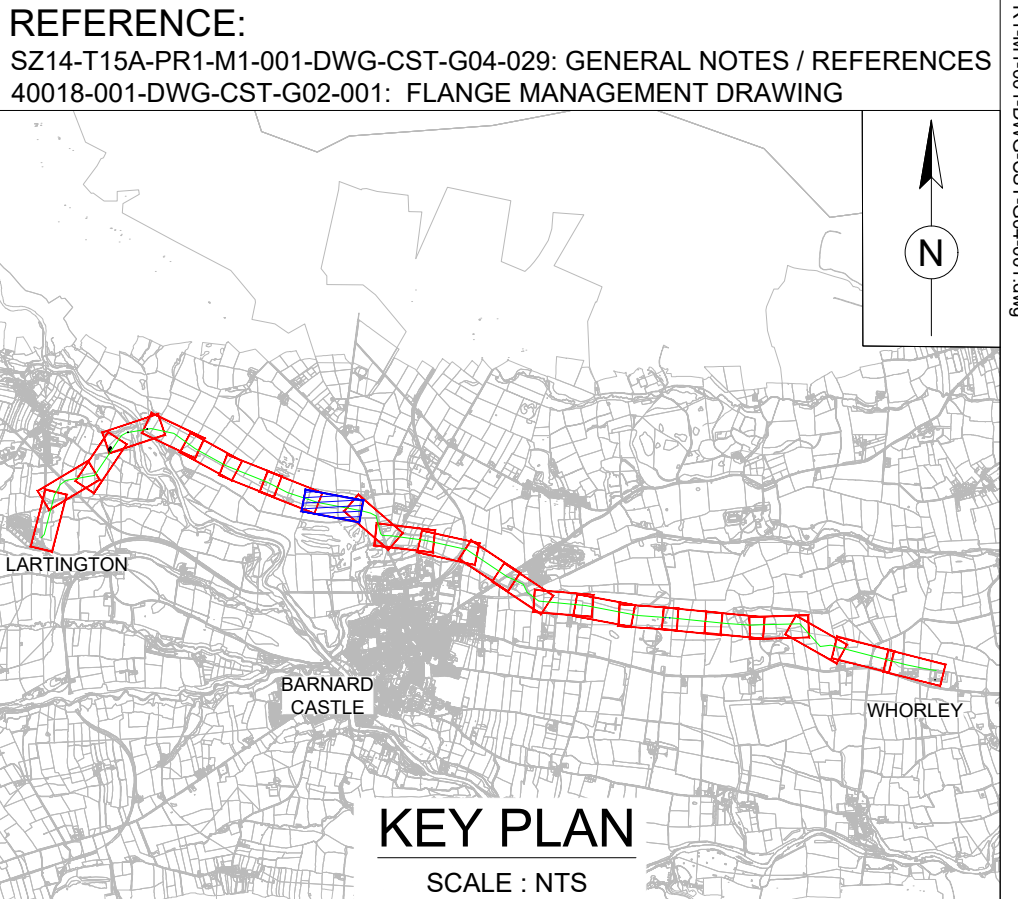
It is assumed that all works will be carried out by a competent contractor working, where appropriate, to an approved method statement

PLAN
SCALE 1:1000

EXISTING SERVICES:

- WATER MAIN
- SEWER MAIN
- ELECTRIC-HV
- ELECTRIC-HV OVERHEAD
- ELECTRIC-LV
- ELECTRIC-LV OVERHEAD
- ELECTRIC
- BT UNDERGROUND
- BT OVERHEAD
- BT-VIRGIN MEDIA
- GAS-LOW PRESSURE
- GAS-MEDIUM PRESSURE
- STORM WATER MAIN
- STREET LIGHT CABLE
- GAS WORKING SAFETY ZONE
- POWER LINE SAFETY ZONE

REFERENCE:
SZ14-T15A-PR1-M1-001-DWG-CST-G04-029: GENERAL NOTES / REFERENCES
40018-001-DWG-CST-G02-001: FLANGE MANAGEMENT DRAWING



Drawing Status: FOR REVIEW BY LEAD APPOINTED PARTY

Suitability: S4

Rev.	Description	Date	Drawn	Chk'd	App'd
P04	FOR REVIEW	20.11.2023	AJ	RH	SK
P03	FOR REVIEW	18.09.2023	AJ	RH	SK
P02	FOR REVIEW	26.07.2023	AJ	RH	SK
P01	REVIEW AND COMMENTS	25.04.2023	AJ	SM	SK

Note:-
IF THIS DRAWING IS FOUND TO BE IN ANY WAY INACCURATE, PLEASE ADVISE THE RECORD OFFICE IMMEDIATELY AND COMPLETE AN AMENDMENT FORM.



CONTRACTOR: FARRANS
REF. NO.: WN019/0205-4.11
I.D. PROJECT NO.: WN019/0205

Drawing Title:
TEES STRATEGIC TRANSFER MAIN
LARTINGTON WTW TO WHORLEY SR
PLAN AND LONGITUDINAL SECTION

Dwg No: SZ14-T15A-PR1-M1-001-DWG-CST-G04-009

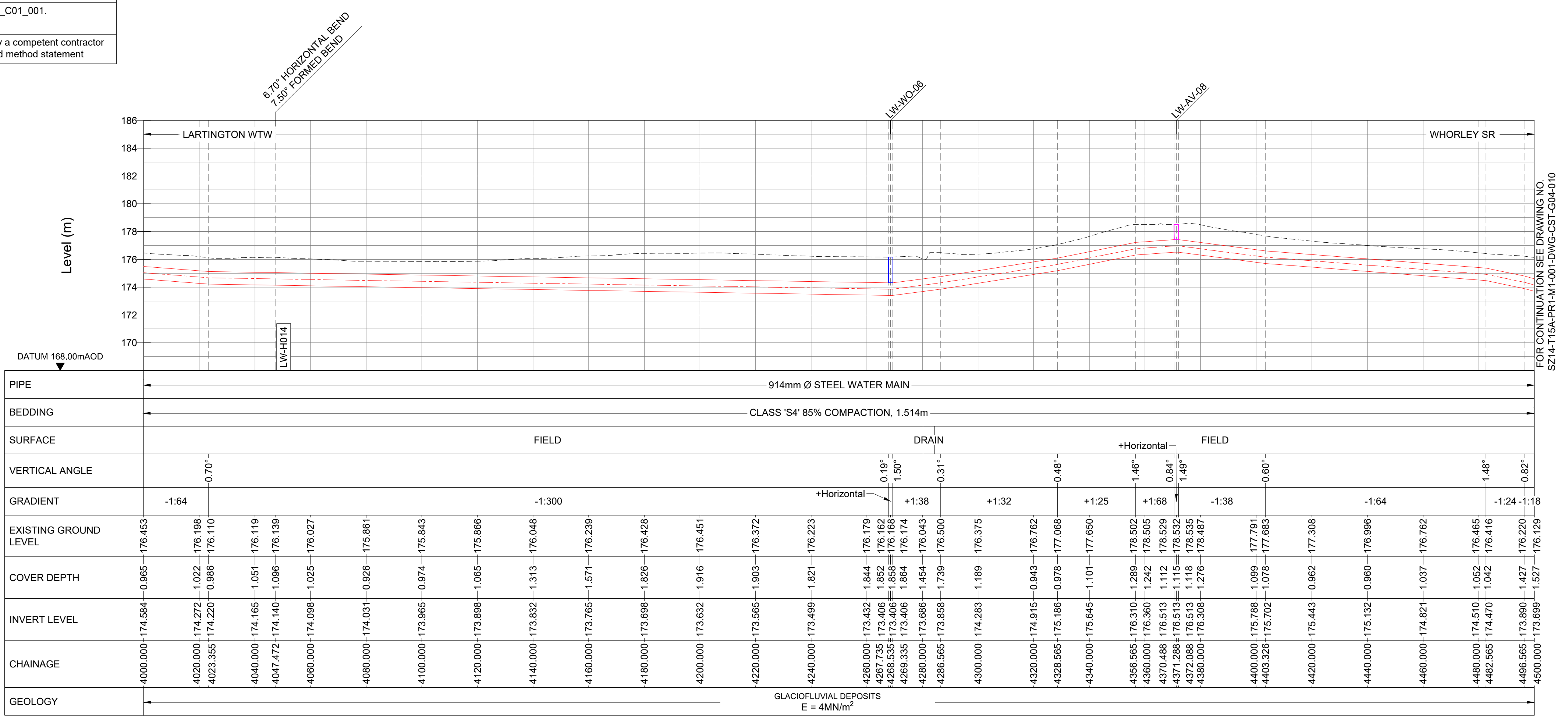
Sheet: 9 OF 23	Date: 20.11.2023	Sheet: A1	Scale: AS SHOWN	Rev No: P04
-----------------------	-------------------------	------------------	------------------------	--------------------

LARTINGTON TO WHORLEY SETTING OUT POINTS		
4000	404384.653	518552.050
4040	404422.752	518539.866
4080	404461.795	518531.363
4120	404501.055	518523.705
4160	404540.316	518516.048
4200	404579.576	518508.390
4240	404618.836	518500.733
4280	404658.096	518493.075
4320	404697.356	518485.418
4360	404736.617	518477.760
4400	404775.877	518470.103
4440	404815.137	518462.445
4480	404854.397	518454.788

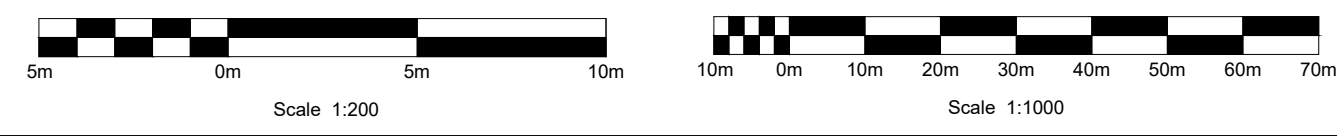
HORIZONTAL BEND		
SOP NO.	EASTING	NORTHING
LW-H014	404429.869	518537.590

WASHOUT		
SOP NO.	EASTING	NORTHING
LW-WO-06	404646.844	518495.270

AIRVALVE		
SOP NO.	EASTING	NORTHING
LW-AV-08	404747.696	518475.599



LONGITUDINAL SECTION
HORIZONTAL SCALE 1:1000 VERTICAL SCALE 1:200



USER: VAW1358 Date: 17/11/23 17:20:04
 Filename: C:\Users\VAW1358\Documents\SINCE\EDM\20231651\Task\Tees Strategic\DWG\SZ14-T15A-PR1-M1-001-DWG-CST-G04-001.dwg