

LEGEND:

- PLANNING BOUNDARY
- WORKING BOUNDARY
- WATERCOURSE
- PROPOSED PIPE ROUTE
- PUBLIC RIGHT OF WAY
- TREE
- L.V.
- A.V.
- W.O.
- SETTING OUT POINT
- ELECTRIC POLE
- HAZARD IDENTIFIER
- CLAY STANK

EXISTING SERVICES:

- WATER MAIN
- SEWER MAIN
- ELECTRIC-HV
- ELECTRIC-HV OVERHEAD
- ELECTRIC-LV
- ELECTRIC-LV OVERHEAD
- ELECTRIC
- BT UNDERGROUND
- BT OVERHEAD
- BT-VIRGIN MEDIA
- GAS-LOW PRESSURE
- GAS-MEDIUM PRESSURE
- STORM WATER MAIN
- STREET LIGHT CABLE
- GAS WORKING SAFETY ZONE
- POWER LINE SAFETY ZONE

REFERENCE:
 SZ14-T15A-PR1-M1-001-DWG-CST-G04-029: GENERAL NOTES / REFERENCES
 40018-001-DWG-CST-G02-001: FLANGE MANAGEMENT DRAWING



Drawing Status: FOR REVIEW BY LEAD APPOINTED PARTY
Suitability: S4

Rev.	Description	Date	Drawn	Chk'd	App'd
P04	FOR REVIEW	20.11.2023	AJ	RH	SK
P03	FOR REVIEW	18.09.2023	AJ	RH	SK
P02	FOR REVIEW	26.07.2023	AJ	RH	SK
P01	REVIEW AND COMMENTS	25.04.2023	AJ	SM	SK

Note:-
 IF THIS DRAWING IS FOUND TO BE IN ANY WAY INACCURATE, PLEASE ADVISE THE RECORD OFFICE IMMEDIATELY AND COMPLETE AN AMENDMENT FORM.

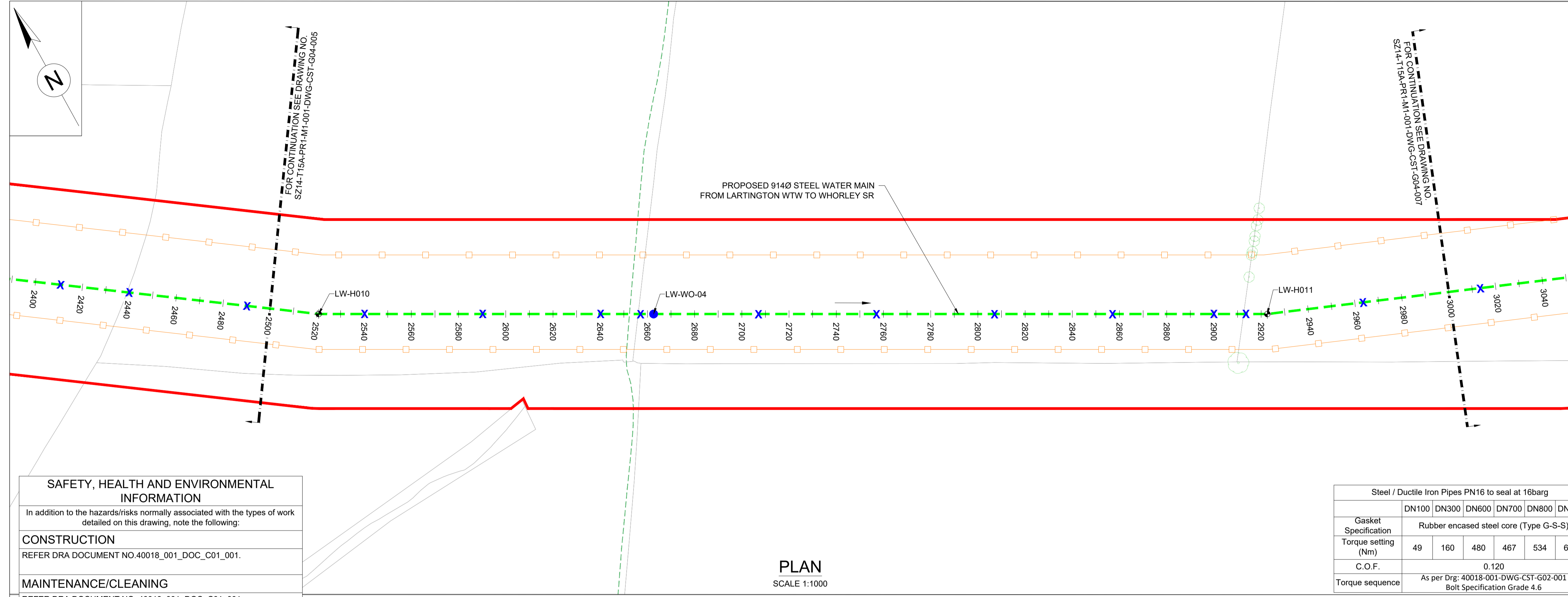


CONTRACTOR: FARRANS
REF. NO.: WN019/0205-4.11
I.D. PROJECT NO.: WN019/0205

Drawing Title:
 TEES STRATEGIC TRANSFER MAIN
 LARTINGTON WTW TO WHORLEY SR
 PLAN AND LONGITUDINAL SECTION

Dwg No:
 SZ14-T15A-PR1-M1-001-DWG-CST-G04-006

Sheet: 6 OF 23	Date: 20.11.2023	Sheet: A1	Scale: AS SHOWN	Rev No: P04
-----------------------	-------------------------	------------------	------------------------	--------------------



SAFETY, HEALTH AND ENVIRONMENTAL INFORMATION

In addition to the hazards/risks normally associated with the types of work detailed on this drawing, note the following:

CONSTRUCTION
 REFER DRA DOCUMENT NO.40018_001_DOC_C01_001.

MAINTENANCE/CLEANING
 REFER DRA DOCUMENT NO. 40018_001_DOC_C01_001.

DECOMMISSIONING/DEMOLITION
 REFER DRA DOCUMENT NO. 40018_001_DOC_C01_001.

It is assumed that all works will be carried out by a competent contractor working, where appropriate, to an approved method statement

Steel / Ductile Iron Pipes PN16 to seal at 16barg

Gasket Specification	DN100	DN300	DN600	DN700	DN800	DN900
Torque setting (Nm)	49	160	480	467	534	600
C.O.F.	0.120					
Torque sequence	As per Drg: 40018-001-DWG-CST-G02-001 Bolt Specification Grade 4.6					

PLAN
 SCALE 1:1000

(*) - DENOTES SURVEY REQUIRED. REFER TO NOTE 4 FROM GENERAL NOTES.

LARTINGTON TO WHORLEY SETTING OUT POINTS

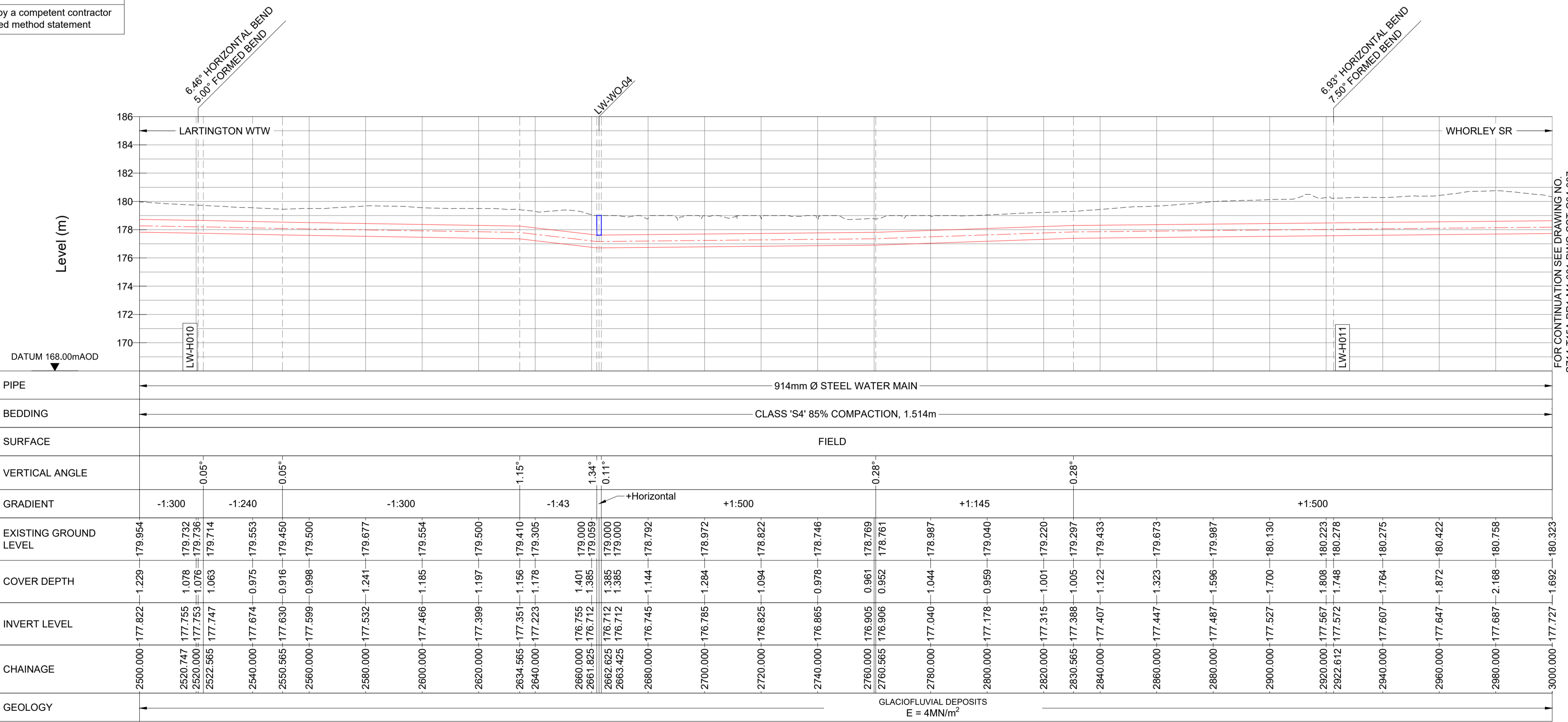
Chainage	Easting	Northing
2520	403035.213	519149.703
2560	403070.196	519130.317
2600	403105.223	519111.002
2640	403140.251	519091.687
2680	403175.279	519072.372
2720	403210.306	519053.058
2760	403245.334	519033.743
2800	403280.362	519014.428
2840	403315.390	518995.113
2880	403350.417	518975.798
2920	403385.445	518956.484
2960	403422.413	518941.254
3000	403459.516	518926.309

HORIZONTAL BEND

SOP NO.	EASTING	NORTHING
LW-H010	403035.822	519149.271
LW-H011	403387.732	518955.223

WASHOUT

SOP NO.	EASTING	NORTHING
LW-WO-04	403160.063	519080.762



LONGITUDINAL SECTION
 HORIZONTAL SCALE 1:1000 VERTICAL SCALE 1:200

