

- LEGEND:**
- PLANNING BOUNDARY
 - WORKING BOUNDARY
 - WATERCOURSE
 - PROPOSED PIPE ROUTE
 - PUBLIC RIGHT OF WAY
 - TREE
 - ◆ L.V.
 - ▲ A.V.
 - W.O.
 - ◆ XXXX SETTING OUT POINT
 - EP ELECTRIC POLE
 - ▲ HAZARD IDENTIFIER
 - × CLAY STANK

- EXISTING SERVICES:**
- W — WATER MAIN
 - SSE — SEWER MAIN
 - HV — ELECTRIC-HV
 - HV — ELECTRIC-HV OVERHEAD
 - LV — ELECTRIC-LV
 - LV — ELECTRIC-LV OVERHEAD
 - E — ELECTRIC
 - BTR — BT UNDERGROUND
 - T — BT OVERHEAD
 - VM — BT-VIRGIN MEDIA
 - LPG — GAS-LOW PRESSURE
 - MPG — GAS-MEDIUM PRESSURE
 - SWS — STORM WATER MAIN
 - SL — STREET LIGHT CABLE
 - ▨ GAS WORKING SAFETY ZONE
 - ▨ POWER LINE SAFETY ZONE

REFERENCE:
 SZ14-T15A-PR1-M1-001-DWG-CST-G04-029: GENERAL NOTES / REFERENCES
 40018-001-DWG-CST-G02-001: FLANGE MANAGEMENT DRAWING



Drawing Status: FOR REVIEW BY LEAD APPOINTED PARTY
Suitability: S4

Rev.	Description	Date	Drawn	Chk'd	App'd
P04	FOR REVIEW	20.11.2023	AJ	RH	SK
P03	FOR REVIEW	18.09.2023	AJ	RH	SK
P02	FOR REVIEW	26.07.2023	AJ	RH	SK
P01	REVIEW AND COMMENTS	25.04.2023	AJ	SM	SK

Note:-
 IF THIS DRAWING IS FOUND TO BE IN ANY WAY INACCURATE, PLEASE ADVISE THE RECORD OFFICE IMMEDIATELY AND COMPLETE AN AMENDMENT FORM.

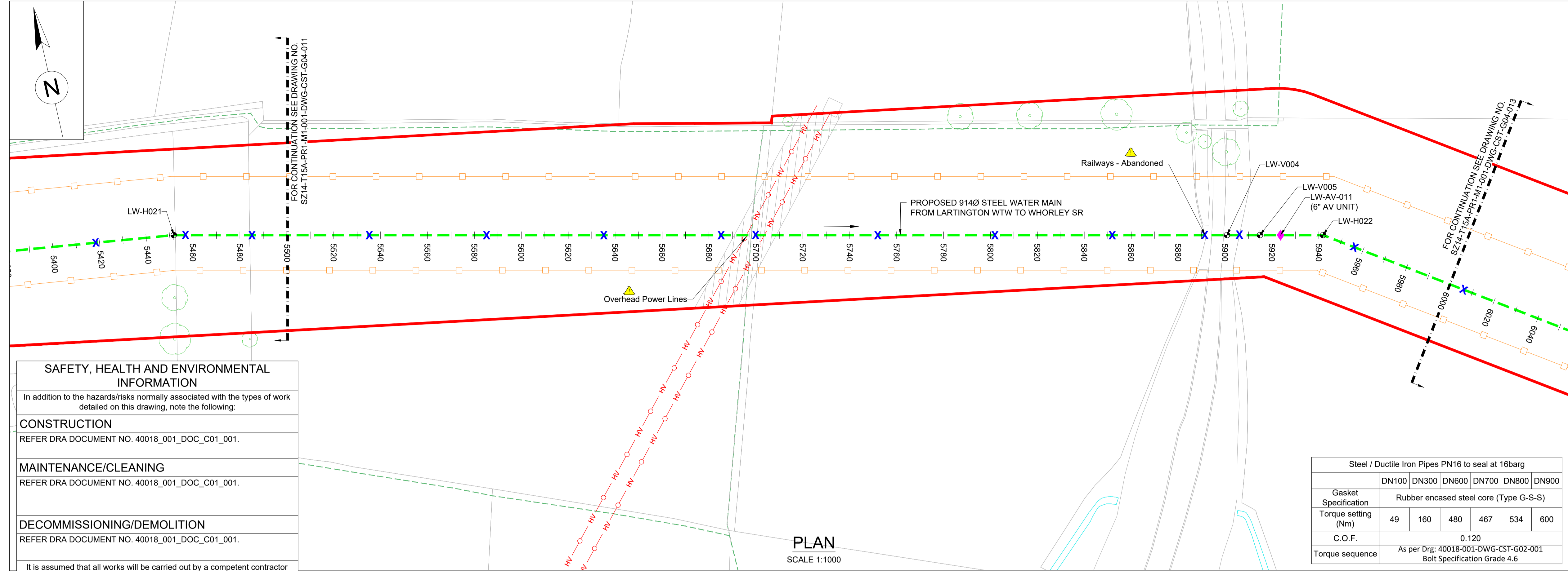


CONTRACTOR: FARRANS
REF. NO.: WN019/0205-4.11
I.D. PROJECT NO.: WN019/0205

Drawing Title:
 TEES STRATEGIC TRANSFER MAIN
 LARTINGTON WTW TO WHORLEY SR
 PLAN AND LONGITUDINAL SECTION

Dwg No:
 SZ14-T15A-PR1-M1-001-DWG-CST-G04-012

Sheet: 12 OF 23 | **Date:** 20.11.2023 | **Sheet:** A1 | **Scale:** AS SHOWN | **Rev No:** P04



SAFETY, HEALTH AND ENVIRONMENTAL INFORMATION
 In addition to the hazards/risks normally associated with the types of work detailed on this drawing, note the following:

CONSTRUCTION
 REFER DRA DOCUMENT NO. 40018_001_DOC_C01_001.

MAINTENANCE/CLEANING
 REFER DRA DOCUMENT NO. 40018_001_DOC_C01_001.

DECOMMISSIONING/DEMOLITION
 REFER DRA DOCUMENT NO. 40018_001_DOC_C01_001.

It is assumed that all works will be carried out by a competent contractor working, where appropriate, to an approved method statement

Gasket Specification	Steel / Ductile Iron Pipes PN16 to seal at 16barg				
	DN100	DN300	DN600	DN700	DN900
Torque setting (Nm)	49	160	480	467	534
C.O.F.	0.120				
Torque sequence	As per Drg: 40018-001-DWG-CST-G02-001 Bolt Specification Grade 4.6				

LARTINGTON TO WHORLEY SETTING OUT POINTS

Stationing	Easting	Northing
5520	405712.158	518094.169
5560	405751.183	518085.389
5600	405790.207	518076.608
5640	405829.232	518067.828
5680	405868.256	518059.048
5720	405907.280	518050.267
5760	405946.305	518041.487
5800	405985.329	518032.706
5840	406024.354	518023.926
5880	406063.378	518015.146
5920	406102.403	518006.365
5960	406141.427	517997.585
6000	406180.451	517988.804

HORIZONTAL BEND

SOP NO.	EASTING	NORTHING
LW-H022	406123.666	518001.581

VERTICAL BEND

SOP NO.	EASTING	NORTHING
LW-V004	406083.734	518010.566
LW-V005	406097.392	518007.493

AIRVALVE

SOP NO.	EASTING	NORTHING
LW-AV-011	406105.978	518005.561

