

- LEGEND:**
- PLANNING BOUNDARY
 - WORKING BOUNDARY
 - WATERCOURSE
 - - - PROPOSED PIPE ROUTE
 - - - PUBLIC RIGHT OF WAYS
 - TREE
 - L.V.
 - A.V.
 - W.O.
 - + SETTING OUT POINT
 - EP
 - △ ELECTRIC POLE
 - △ HAZARD IDENTIFIER
 - X CLAY STANK

- EXISTING SERVICES:**
- W WATER MAIN
 - SSE SEWER MAIN
 - HV ELECTRIC-HV
 - HV OVERHEAD ELECTRIC-HV OVERHEAD
 - LV ELECTRIC-LV
 - LV OVERHEAD ELECTRIC-LV OVERHEAD
 - E ELECTRIC LINE
 - BTR BT UNDERGROUND
 - T BT OVERHEAD
 - VM BT-VIRGIN MEDIA
 - LPG GAS-LOW PRESSURE
 - MPG GAS-MEDIUM PRESSURE
 - SWS STORM WATER MAIN
 - SL STREET LIGHT CABLE
 - ▨ GAS WORKING SAFETY ZONE
 - ▨ POWER LINE SAFETY ZONE

REFERENCE:
 SZ14-T15A-PR1-M3-001-DWG-CST-G04-034: GENERAL NOTES / REFERENCES
 40018-001-DWG-CST-G02-001: FLANGE MANAGEMENT DRAWING



Drawing Status: FOR REVIEW BY LEAD APPOINTED PARTY
Suitability: S4

Rev.	Description	Date	Drawn	Chk'd	App'd
P06	FOR REVIEW	17.11.2023	AJ	RH	SK
P05	FOR REVIEW	10.10.2023	AJ	RH	SK
P04	FOR REVIEW	18.09.2023	AJ	RH	SK
P03	FOR REVIEW	26.07.2023	AJ	RH	SK
P02	FOR REVIEW	30.06.2023	AJ	RH	SK

Note:-
 IF THIS DRAWING IS FOUND TO BE IN ANY WAY INACCURATE, PLEASE ADVISE THE RECORD OFFICE IMMEDIATELY AND COMPLETE AN AMENDMENT FORM.

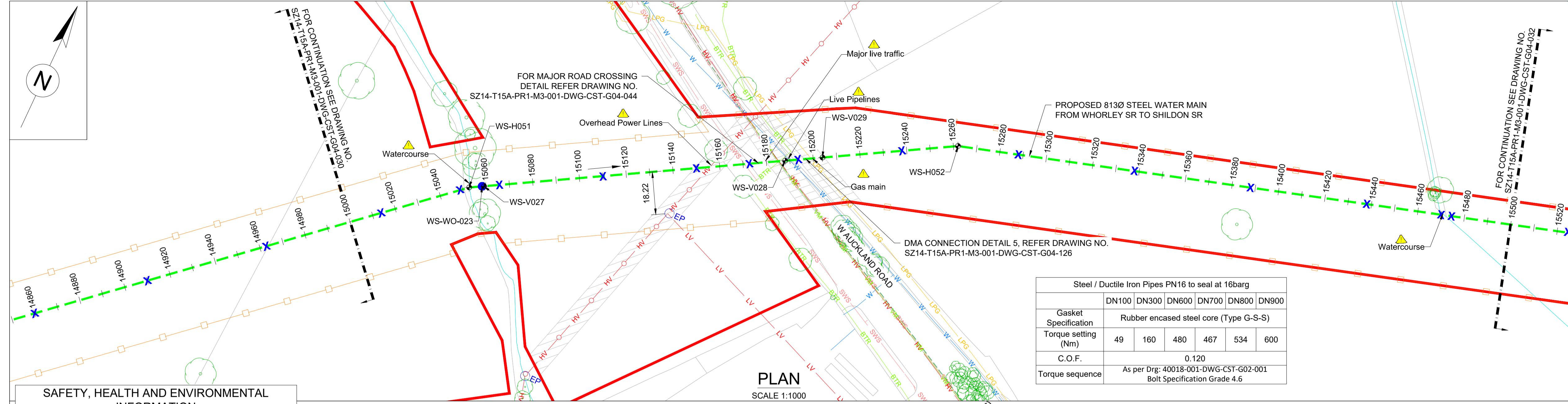


CONTRACTOR: FARRANS
REF. NO.: WN019/0205-4.11
I.D. PROJECT NO.: WN019/0205

Drawing Title:
 TEES STRATEGIC TRANSFER MAIN
 WHORLEY SR TO SHILDON SR
 PLAN AND LONGITUDINAL SECTION

Dwg No:
 SZ14-T15A-PR1-M3-001-DWG-CST-G04-031

Sheet: 31 OF 33	Date: 17.11.2023	Sheet: A1	Scale: AS SHOWN	Rev No: P06
------------------------	-------------------------	------------------	------------------------	--------------------



SAFETY, HEALTH AND ENVIRONMENTAL INFORMATION
 In addition to the hazards/risks normally associated with the types of work detailed on this drawing, note the following:

CONSTRUCTION
 REFER DRA DOCUMENT NO. 40018_001_DOC_C01_001.

MAINTENANCE/CLEANING
 REFER DRA DOCUMENT NO. 40018_001_DOC_C01_001.

DECOMMISSIONING/DEMOLITION
 REFER DRA DOCUMENT NO. 40018_001_DOC_C01_001.

It is assumed that all works will be carried out by a competent contractor working, where appropriate, to an approved method statement

WHORLEY TO SHILDON SETTING OUT POINTS

CHAINAGE (m)	EASTING	NORTHING
15000	420813.576	526259.399
15040	420843.677	526285.741
15080	420876.892	526307.723
15120	420911.577	526327.646
15160	420946.263	526347.568
15200	420980.948	526367.491
15240	421015.634	526387.414
15280	421051.931	526403.614
15320	421090.195	526415.269
15360	421128.460	526426.924
15400	421166.724	526438.579
15440	421204.988	526450.235
15480	421243.252	526461.890

VERTICAL BEND

SOP NO.	EASTING	NORTHING
WS-V027	420858.829	526297.349
WS-V028	420970.543	526361.514
WS-V029	420984.417	526369.483

HORIZONTAL BEND

SOP NO.	EASTING	NORTHING
WS-H051	420853.332	526294.191
WS-H052	421034.701	526398.365

WASHOUT

SOP NO.	EASTING	NORTHING
WS-WO-023	420858.136	526296.950

