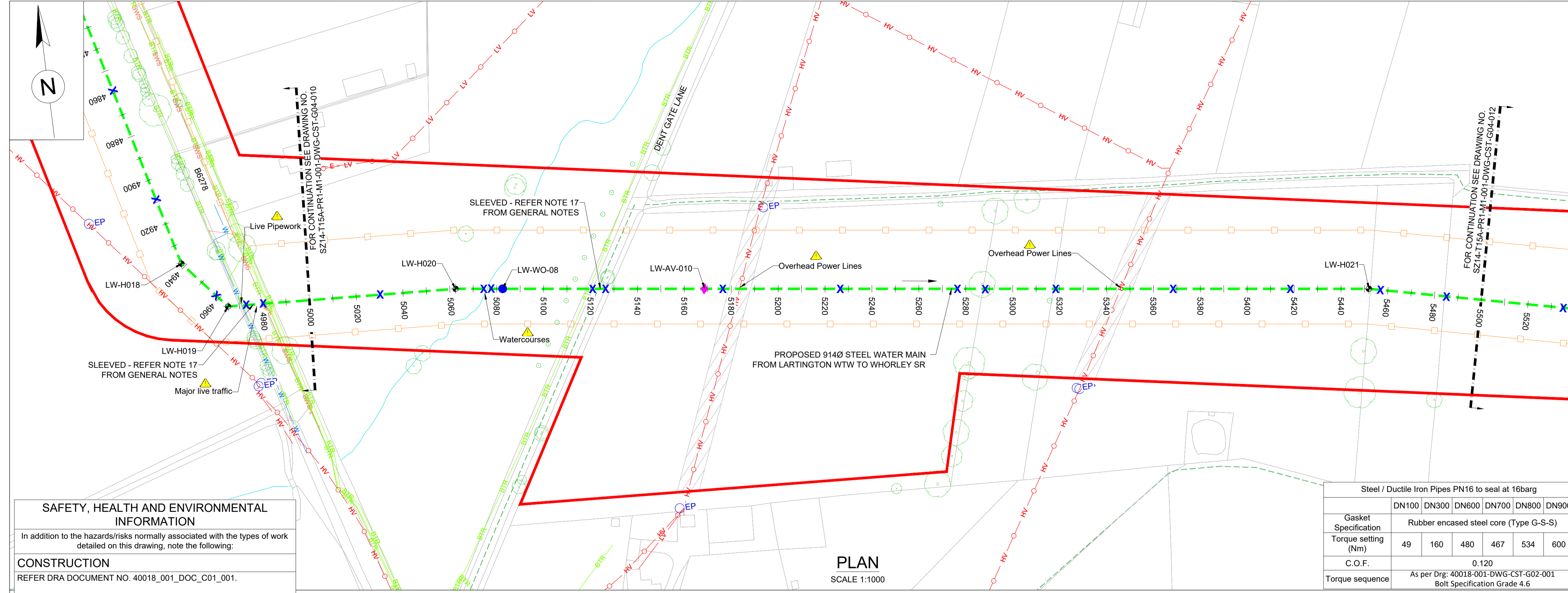


- LEGEND:**
- PLANNING BOUNDARY
 - WORKING BOUNDARY
 - WATERCOURSE
 - PROPOSED PIPE ROUTE
 - PUBLIC RIGHT OF WAY
 - TREE
 - L.V.
 - A.V.
 - W.O.
 - SETTING OUT POINT
 - ELECTRIC POLE
 - HAZARD IDENTIFIER
 - CLAY STANK

- EXISTING SERVICES:**
- WATER MAIN
 - SEWER MAIN
 - ELECTRIC-HV
 - ELECTRIC-HV OVERHEAD
 - ELECTRIC-LV
 - ELECTRIC-LV OVERHEAD
 - ELECTRIC
 - BT UNDERGROUND
 - BT OVERHEAD
 - BT-VIRGIN MEDIA
 - GAS-LOW PRESSURE
 - GAS-MEDIUM PRESSURE
 - STORM WATER MAIN
 - STREET LIGHT CABLE
 - GAS WORKING SAFETY ZONE
 - POWER LINE SAFETY ZONE

REFERENCE:
 SZ14-T15A-PR1-M1-001-DWG-CST-G04-029: GENERAL NOTES / REFERENCES
 40018-001-DWG-CST-G02-001: FLANGE MANAGEMENT DRAWING



Steel / Ductile Iron Pipes PN16 to seal at 16 barg						
Gasket Specification	DN100	DN300	DN600	DN700	DN800	DN900
Torque setting (Nm)	49	160	480	467	534	600
C.O.F.	0.120					
Torque sequence	As per Drg: 40018-001-DWG-CST-G02-001 Bolt Specification Grade 4.6					

SAFETY, HEALTH AND ENVIRONMENTAL INFORMATION
 In addition to the hazards/risks normally associated with the types of work detailed on this drawing, note the following:

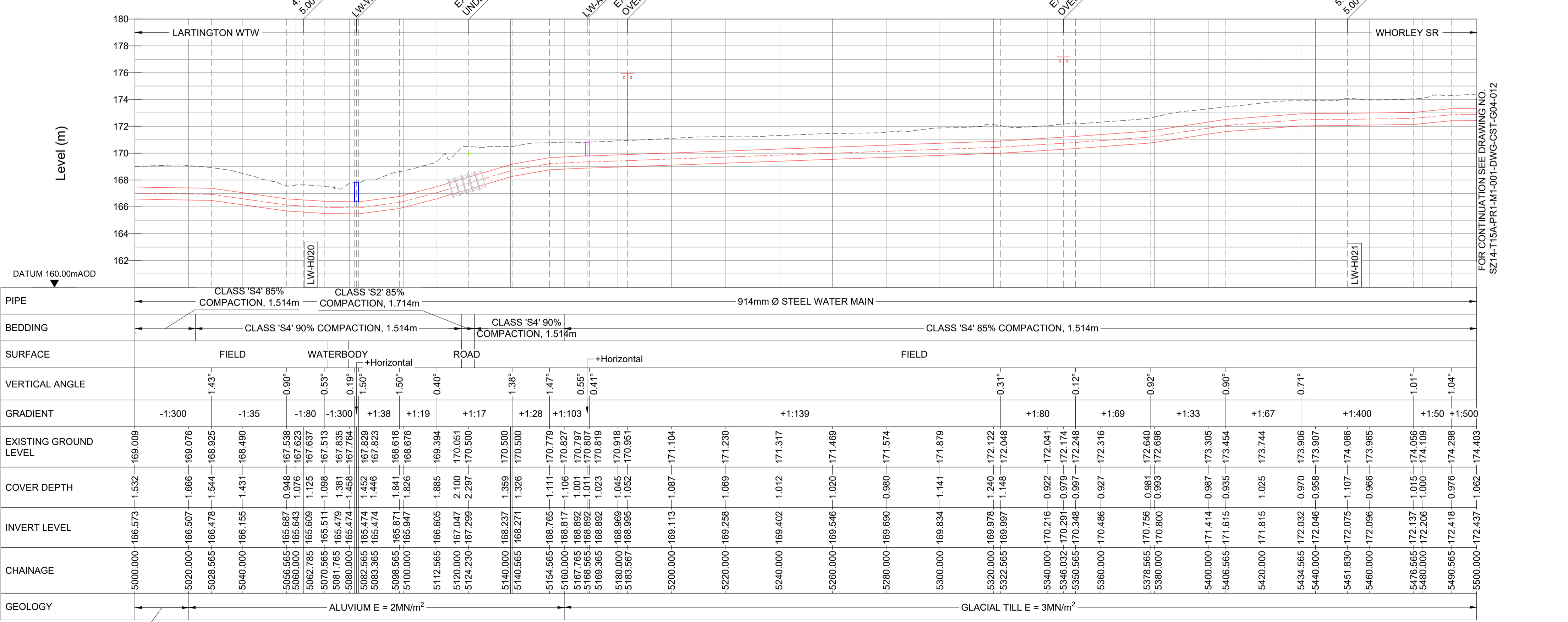
CONSTRUCTION
 REFER DRA DOCUMENT NO. 40018_001_DOC_C01_001.

MAINTENANCE/CLEANING
 REFER DRA DOCUMENT NO. 40018_001_DOC_C01_001.

DECOMMISSIONING/DEMOLITION
 REFER DRA DOCUMENT NO. 40018_001_DOC_C01_001.

It is assumed that all works will be carried out by a competent contractor working, where appropriate, to an approved method statement

LARTINGTON TO WHORLEY SETTING OUT POINTS		
5000	405196.878	518160.192
5040	405236.834	518158.325
5080	405276.677	518155.132
5120	405316.370	518150.184
5160	405356.063	518145.236
5200	405395.756	518140.287
5240	405435.448	518135.339
5280	405475.141	518130.390
5320	405514.834	518125.442
5360	405554.526	518120.493
5400	405594.219	518115.545
5440	405633.912	518110.596
5480	405673.134	518102.949



HORIZONTAL BEND		
SOP NO.	EASTING	NORTHING
LW-H020	405259.304	518157.276
LW-H021	405645.651	518109.133

WASHOUT		
SOP NO.	EASTING	NORTHING
LW-WO-08	405279.222	518154.815

AIRVALVE		
SOP NO.	EASTING	NORTHING
LW-AV-010	405364.562	518144.176

Drawing Status: FOR REVIEW BY LEAD APPOINTED PARTY
Suitability: S4

Rev.	Description	Date	Drawn	Chk'd	App'd
P04	FOR REVIEW	20.11.2023	AJ	RH	SK
P03	FOR REVIEW	18.09.2023	AJ	RH	SK
P02	FOR REVIEW	26.07.2023	AJ	RH	SK
P01	REVIEW AND COMMENTS	25.04.2023	AJ	SM	SK

Note:-
 IF THIS DRAWING IS FOUND TO BE IN ANY WAY INACCURATE, PLEASE ADVISE THE RECORD OFFICE IMMEDIATELY AND COMPLETE AN AMENDMENT FORM.



CONTRACTOR: FARRANS
REF. NO.: WN019/0205-4.11
I.D. PROJECT NO.: WN019/0205

Drawing Title:
 TEES STRATEGIC TRANSFER MAIN
 LARTINGTON WTW TO WHORLEY SR
 PLAN AND LONGITUDINAL SECTION

Dwg No:
 SZ14-T15A-PR1-M1-001-DWG-CST-G04-011

Sheet: 11 OF 23	Date: 20.11.2023	Sheet: A1	Scale: AS SHOWN	Rev No: P04
------------------------	-------------------------	------------------	------------------------	--------------------