

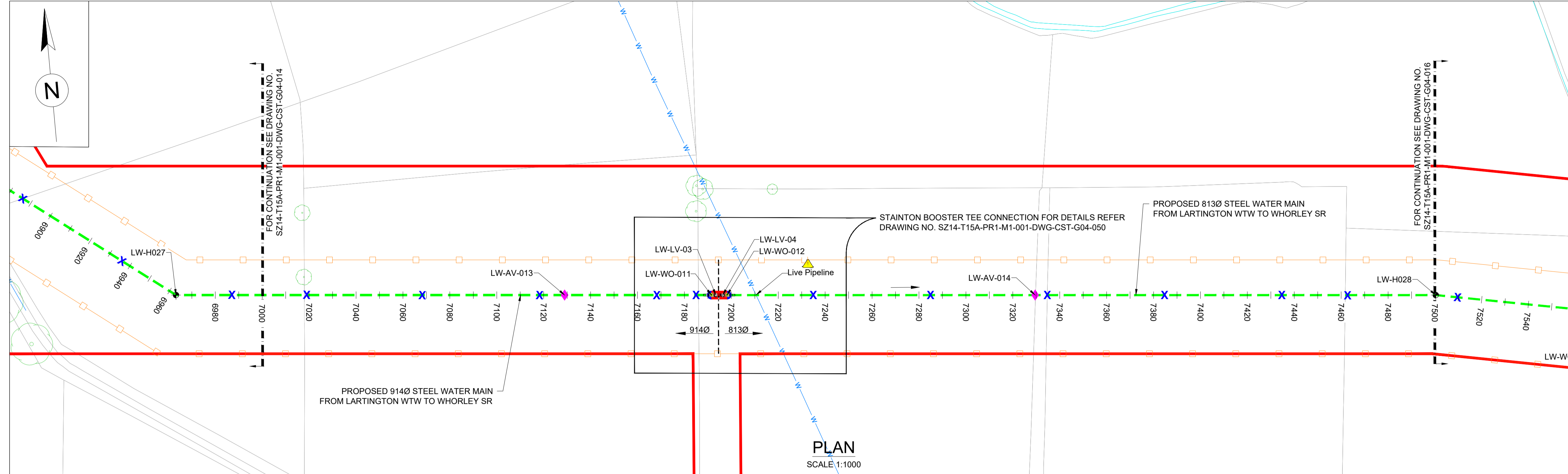
LEGEND:

- PLANNING BOUNDARY
- WORKING BOUNDARY
- WATERCOURSE
- PROPOSED PIPE ROUTE
- PUBLIC RIGHT OF WAY
- TREE
- L.V.
- A.V.
- W.O.
- SETTING OUT POINT
- ELECTRIC POLE
- HAZARD IDENTIFIER
- CLAY STANK

EXISTING SERVICES:

- WATER MAIN
- SEWER MAIN
- ELECTRIC-HV
- ELECTRIC-HV OVERHEAD
- ELECTRIC-LV
- ELECTRIC-LV OVERHEAD
- ELECTRIC
- BT UNDERGROUND
- BT OVERHEAD
- BT-VIRGIN MEDIA
- GAS-LOW PRESSURE
- GAS-MEDIUM PRESSURE
- STORM WATER MAIN
- STREET LIGHT CABLE
- GAS WORKING SAFETY ZONE
- POWER LINE SAFETY ZONE

REFERENCE:
 SZ14-T15A-PR1-M1-001-DWG-CST-G04-029: GENERAL NOTES / REFERENCES
 40018-001-DWG-CST-G02-001: FLANGE MANAGEMENT DRAWING



SAFETY, HEALTH AND ENVIRONMENTAL INFORMATION

In addition to the hazards/risks normally associated with the types of work detailed on this drawing, note the following:

CONSTRUCTION
 REFER DRA DOCUMENT NO. 40018_001_DOC_C01_001.

MAINTENANCE/CLEANING
 REFER DRA DOCUMENT NO. 40018_001_DOC_C01_001.

DECOMMISSIONING/DEMOLITION
 REFER DRA DOCUMENT NO. 40018_001_DOC_C01_001.

It is assumed that all works will be carried out by a competent contractor working, where appropriate, to an approved method statement

LARTINGTON TO WHORLEY SETTING OUT POINTS

7000	406977.692	517411.931
7040	407017.528	517408.319
7080	407057.365	517404.707
7120	407097.202	517401.096
7160	407137.038	517397.484
7200	407176.875	517393.872
7240	407216.711	517390.261
7280	407256.548	517386.649
7320	407296.385	517383.037
7360	407336.221	517379.426
7400	407376.058	517375.814
7440	407415.894	517372.202
7480	407455.731	517368.590

AIRVALVE

SOP NO.	EASTING	NORTHING
LW-AV-013	407106.094	517400.289
LW-AV-014	407305.851	517382.179

WASHOUT

SOP NO.	EASTING	NORTHING
LW-WO-011	407168.405	517394.640
LW-WO-012	407175.068	517394.036

LINE VALVE

SOP NO.	EASTING	NORTHING
LW-LV-03	407170.311	517394.468
LW-LV-04	407173.190	517394.206

Steel / Ductile Iron Pipes PN16 to seal at 16barg

DN100	DN300	DN600	DN700	DN800	DN900
Rubber encased steel core (Type G-S-S)					
Torque setting (Nm)					
49	160	480	467	534	600
C.O.F.					
0.120					
Torque sequence					
As per Drg: 40018-001-DWG-CST-G02-001 Bolt Specification Grade 4.6					

(*) - DENOTES SURVEY REQUIRED. REFER TO NOTE 4 FROM GENERAL NOTES.



Drawing Status:
 FOR REVIEW BY LEAD APPOINTED PARTY

Suitability:
 S4

Rev.	Description	Date	Drawn	Chk'd	App'd
P04	FOR REVIEW	20.11.2023	AJ	RH	SK
P03	FOR REVIEW	18.09.2023	AJ	RH	SK
P02	FOR REVIEW	26.07.2023	AJ	RH	SK
P01	REVIEW AND COMMENTS	25.04.2023	AJ	SM	SK

Note:-
 IF THIS DRAWING IS FOUND TO BE IN ANY WAY INACCURATE, PLEASE ADVISE THE RECORD OFFICE IMMEDIATELY AND COMPLETE AN AMENDMENT FORM.

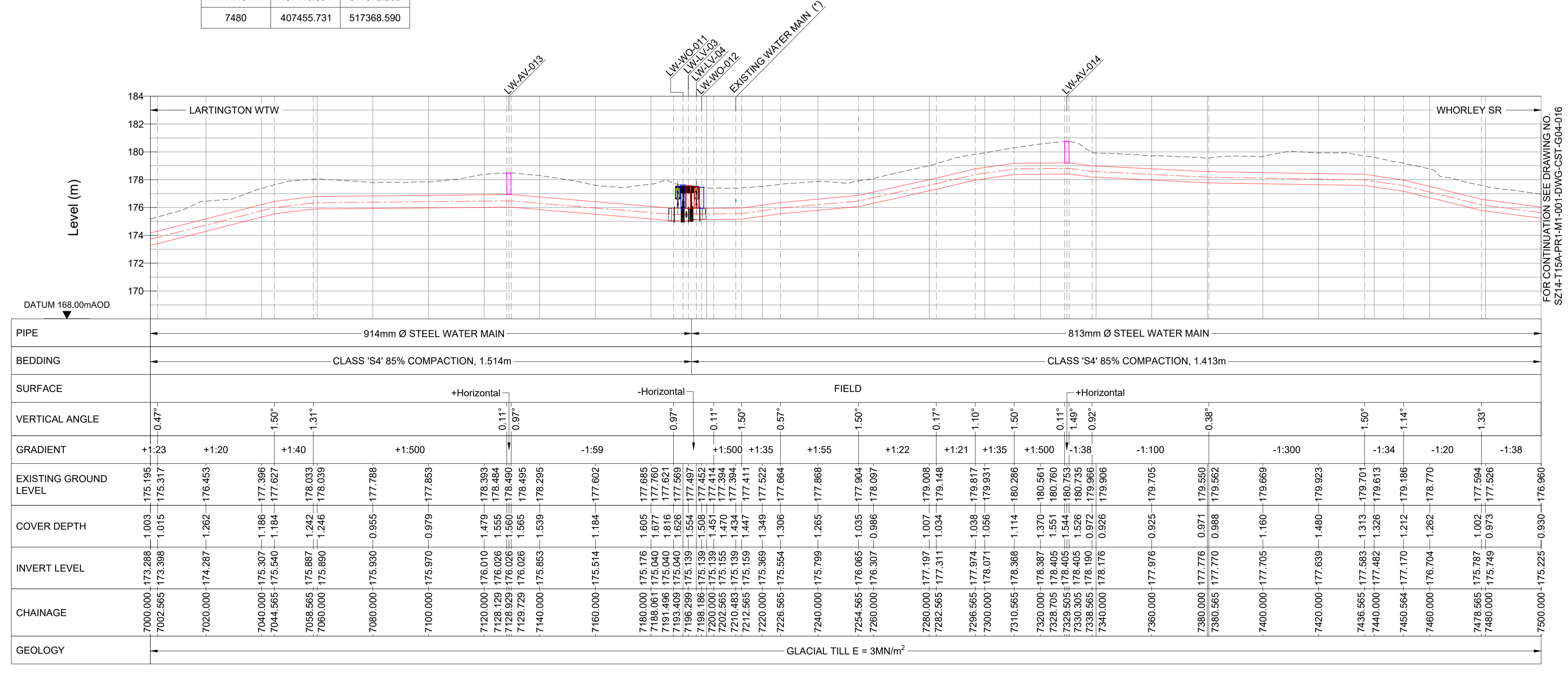


CONTRACTOR: FARRANS
REF. NO.: WN019/0205-4.11
I.D. PROJECT NO.: WN019/0205

Drawing Title:
 TEES STRATEGIC TRANSFER MAIN
 LARTINGTON WTW TO WHORLEY SR
 PLAN AND LONGITUDINAL SECTION

Dwg No:
 SZ14-T15A-PR1-M1-001-DWG-CST-G04-015

Sheet:	Date:	Sheet:	Scale:	Rev No:
15 OF 23	20.11.2023	A1	AS SHOWN	P04



LONGITUDINAL SECTION
 HORIZONTAL SCALE 1:1000 VERTICAL SCALE 1:200

