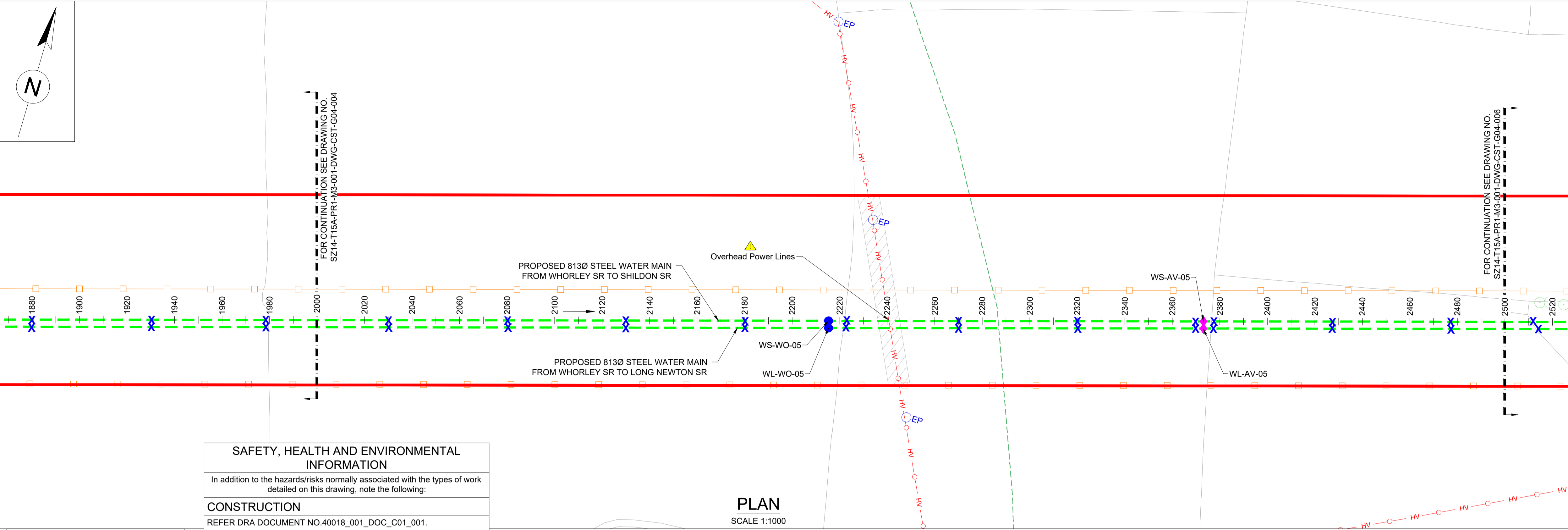


- LEGEND:**
- PLANNING BOUNDARY
 - WORKING BOUNDARY
 - WATERCOURSE
 - PROPOSED PIPE ROUTE
 - PUBLIC RIGHT OF WAYS
 - TREE
 - L.V.
 - A.V.
 - W.O.
 - SETTING OUT POINT
 - ELECTRIC POLE
 - HAZARD IDENTIFIER
 - CLAY STANK

- EXISTING SERVICES:**
- WATER MAIN
 - SEWER MAIN
 - ELECTRIC-HV
 - ELECTRIC-HV OVERHEAD
 - ELECTRIC-LV
 - ELECTRIC-LV OVERHEAD
 - ELECTRIC LINE
 - BT UNDERGROUND
 - BT OVERHEAD
 - BT-VIRGIN MEDIA
 - GAS-LOW PRESSURE
 - GAS-MEDIUM PRESSURE
 - STORM WATER MAIN
 - STREET LIGHT CABLE
 - GAS WORKING SAFETY ZONE
 - POWER LINE SAFETY ZONE

REFERENCE:
 SZ14-T15A-PR1-M3-001-DWG-CST-G04-034: GENERAL NOTES / REFERENCES
 40018-001-DWG-CST-G02-001: FLANGE MANAGEMENT DRAWING



WASHOUT

SOP NO.	EASTING	NORTHING
WS-WO-05	413770.712	516998.683
WL-WO-05	413771.550	516995.802

SAFETY, HEALTH AND ENVIRONMENTAL INFORMATION
 In addition to the hazards/risks normally associated with the types of work detailed on this drawing, note the following:

CONSTRUCTION
 REFER DRA DOCUMENT NO. 40018_001_DOC_C01_001.

MAINTENANCE/CLEANING
 REFER DRA DOCUMENT NO. 40018_001_DOC_C01_001.

DECOMMISSIONING/DEMOLITION
 REFER DRA DOCUMENT NO. 40018_001_DOC_C01_001.

It is assumed that all works will be carried out by a competent contractor working, where appropriate, to an approved method statement

AIRVALVE

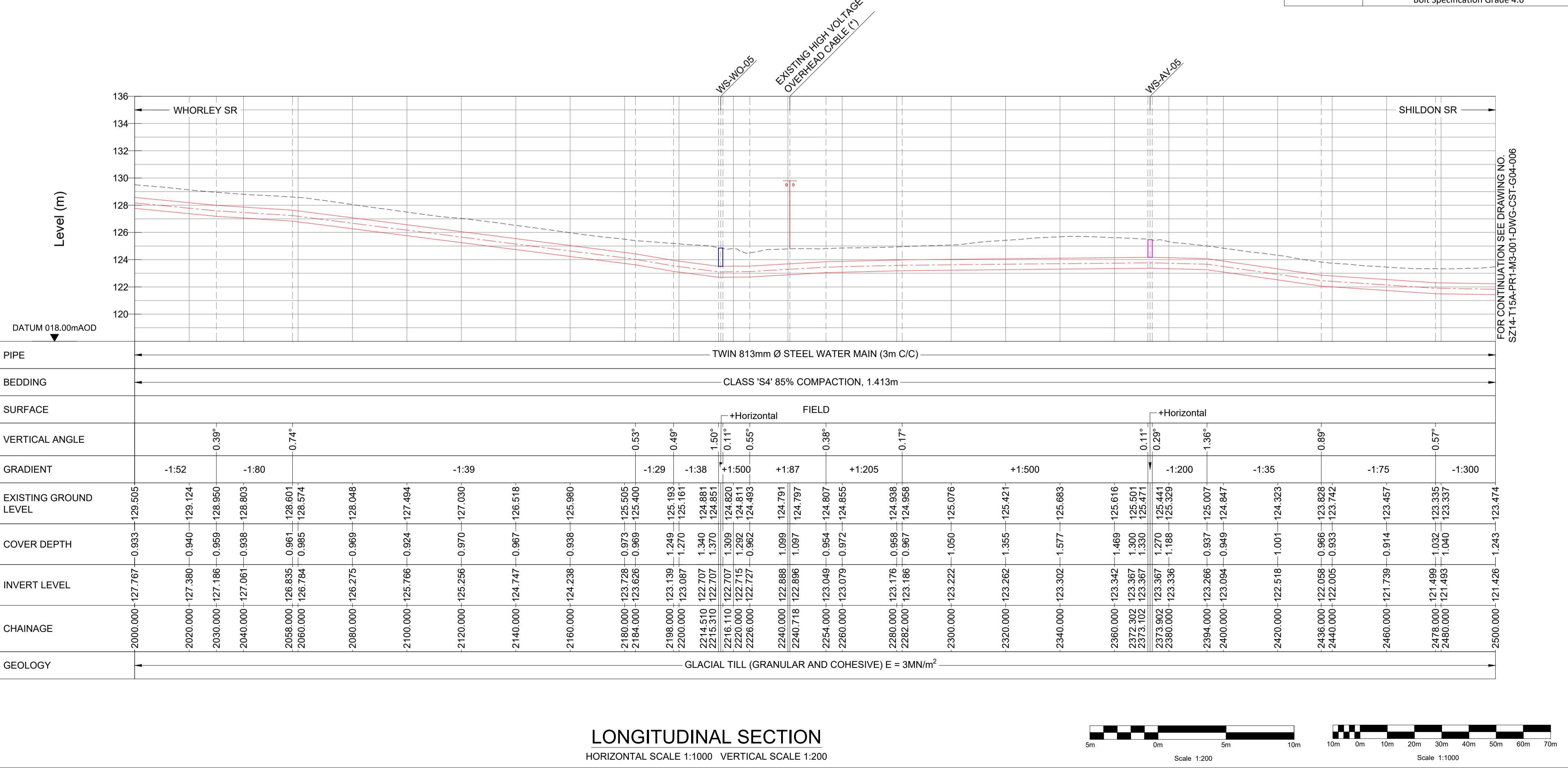
SOP NO.	EASTING	NORTHING
WS-AV-05	413922.236	517042.716
WL-AV-05	413923.073	517039.835

WHORLEY TO SHILDON SETTING OUT POINTS

CHAINAGE (m)	EASTING	NORTHING
2000	413563.956	516938.599
2040	413602.367	516949.761
2080	413640.778	516960.923
2120	413679.189	516972.086
2160	413717.600	516983.248
2200	413756.011	516994.410
2240	413794.422	517005.573
2280	413832.833	517016.735
2320	413871.243	517027.898
2360	413909.654	517039.060
2400	413948.065	517050.222
2440	413986.476	517061.385
2480	414024.887	517072.547

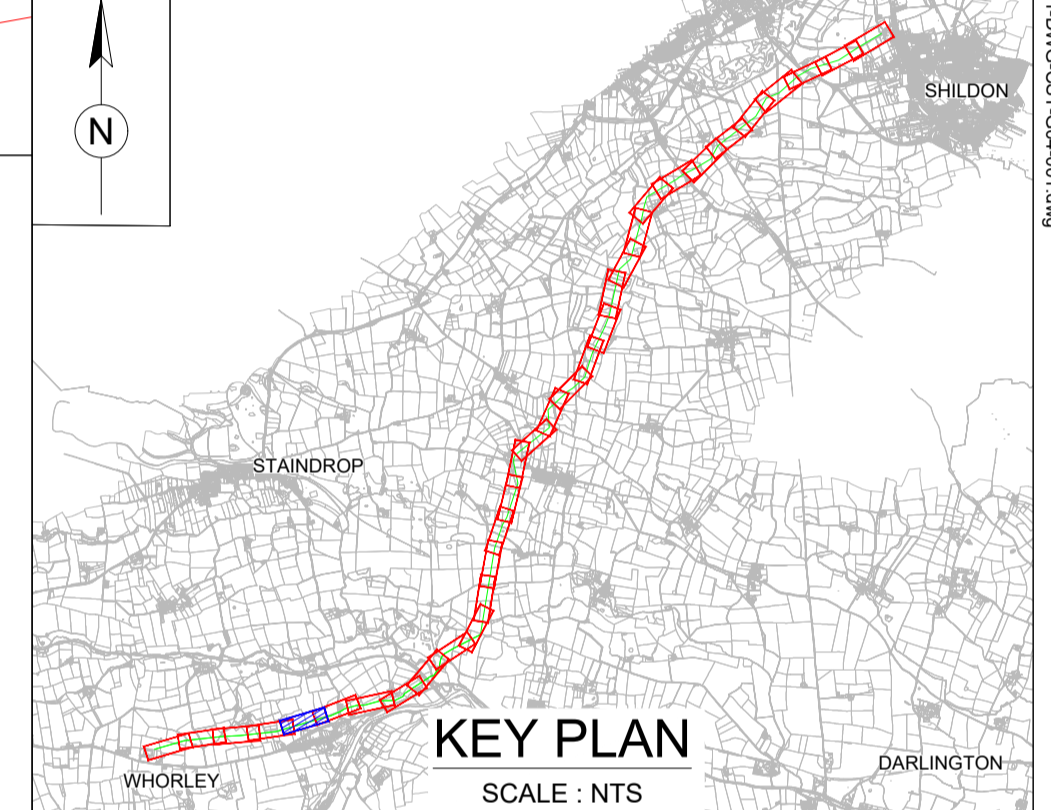
WHORLEY TO LONG NEWTON SETTING OUT POINTS

CHAINAGE (m)	EASTING	NORTHING
2000	413564.794	516935.718
2040	413603.205	516946.880
2080	413641.616	516958.043
2120	413680.027	516969.205
2160	413718.438	516980.368
2200	413756.849	516991.530
2240	413795.260	517002.692
2280	413833.671	517013.854
2320	413872.082	517025.017
2360	413910.493	517036.179
2400	413948.904	517047.341
2440	413987.315	517058.504
2480	414025.726	517069.666



Steel / Ductile Iron Pipes PN16 to seal at 16barg

Gasket Specification	DN100	DN300	DN600	DN700	DN800	DN900
Torque setting (Nm)	49	160	480	467	534	600
C.O.F.	0.120					
Torque sequence	As per Drg: 40018-001-DWG-CST-G02-001 Bolt Specification Grade 4.6					



Drawing Status: FOR REVIEW BY LEAD APPOINTED PARTY

Suitability: S4

Rev.	Description	Date	Drawn	Chk'd	App'd
P06	FOR REVIEW	17.11.2023	AJ	RH	SK
P05	FOR REVIEW	10.10.2023	AJ	RH	SK
P04	FOR REVIEW	18.09.2023	AJ	RH	SK
P03	FOR REVIEW	26.07.2023	AJ	RH	SK
P02	FOR REVIEW	30.06.2023	AJ	RH	SK

Note:-
 IF THIS DRAWING IS FOUND TO BE IN ANY WAY INACCURATE, PLEASE ADVISE THE RECORD OFFICE IMMEDIATELY AND COMPLETE AN AMENDMENT FORM.



CONTRACTOR: FARRANS
REF. NO.: WN019/0205-4.11
I.D. PROJECT NO.: WN019/0205

Drawing Title:
 TEES STRATEGIC TRANSFER MAIN
 WHORLEY SR TO SHILDON SR
 PLAN AND LONGITUDINAL SECTION

Dwg No:
 SZ14-T15A-PR1-M3-001-DWG-CST-G04-005

Sheet:	Date:	Sheet:	Scale:	Rev No:
5 OF 33	17.11.2023	A1	AS SHOWN	P06

LONGITUDINAL SECTION
 HORIZONTAL SCALE 1:1000 VERTICAL SCALE 1:200

