

SAFETY, HEALTH AND ENVIRONMENTAL INFORMATION

In addition to the hazards/risks normally associated with the types of work detailed on this drawing, note the following:

CONSTRUCTION
REFER DRA DOCUMENT NO. 40018_001_DOC_C01_001.

MAINTENANCE/CLEANING
REFER DRA DOCUMENT NO. 40018_001_DOC_C01_001.

DECOMMISSIONING/DEMOLITION
REFER DRA DOCUMENT NO. 40018_001_DOC_C01_001.

It is assumed that all works will be carried out by a competent contractor working, where appropriate, to an approved method statement

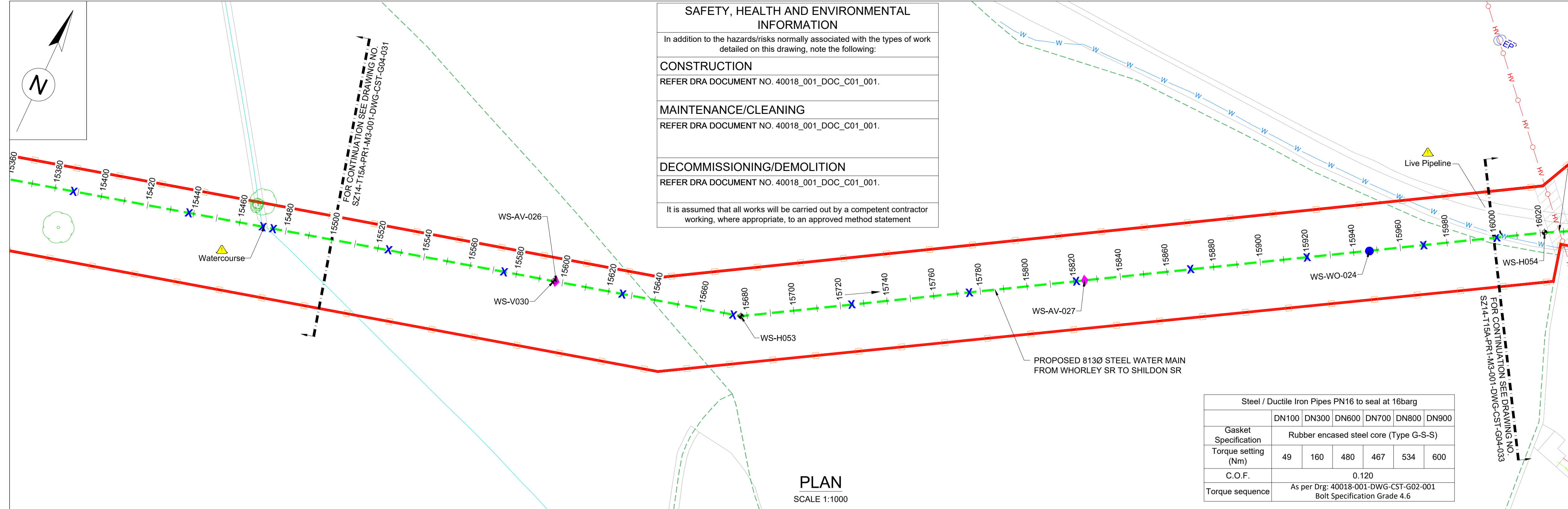
LEGEND:

- PLANNING BOUNDARY
- WORKING BOUNDARY
- WATERCOURSE
- - - PROPOSED PIPE ROUTE
- - - PUBLIC RIGHT OF WAYS
- TREE
- ◆ L.V.
- ◆ A.V.
- ◆ W.O.
- ⊕XXXX SETTING OUT POINT
- EP ELECTRIC POLE
- △ HAZARD IDENTIFIER
- X CLAY STANK

EXISTING SERVICES:

- W WATER MAIN
- SSE SEWER MAIN
- HV ELECTRIC-HV
- HV ELECTRIC-HV OVERHEAD
- LV ELECTRIC-LV
- LV ELECTRIC-LV OVERHEAD
- E ELECTRIC LINE
- BTR BT UNDERGROUND
- T BT OVERHEAD
- VM BT-VIRGIN MEDIA
- LPG GAS-LOW PRESSURE
- MPG GAS-MEDIUM PRESSURE
- SWS STORM WATER MAIN
- SL STREET LIGHT CABLE
- GAS WORKING SAFETY ZONE
- POWER LINE SAFETY ZONE

REFERENCE:
 SZ14-T15A-PR1-M3-001-DWG-CST-G04-034: GENERAL NOTES / REFERENCES
 40018-001-DWG-CST-G02-001: FLANGE MANAGEMENT DRAWING



(*) - DENOTES SURVEY REQUIRED. REFER TO NOTE 4 FROM GENERAL NOTES.

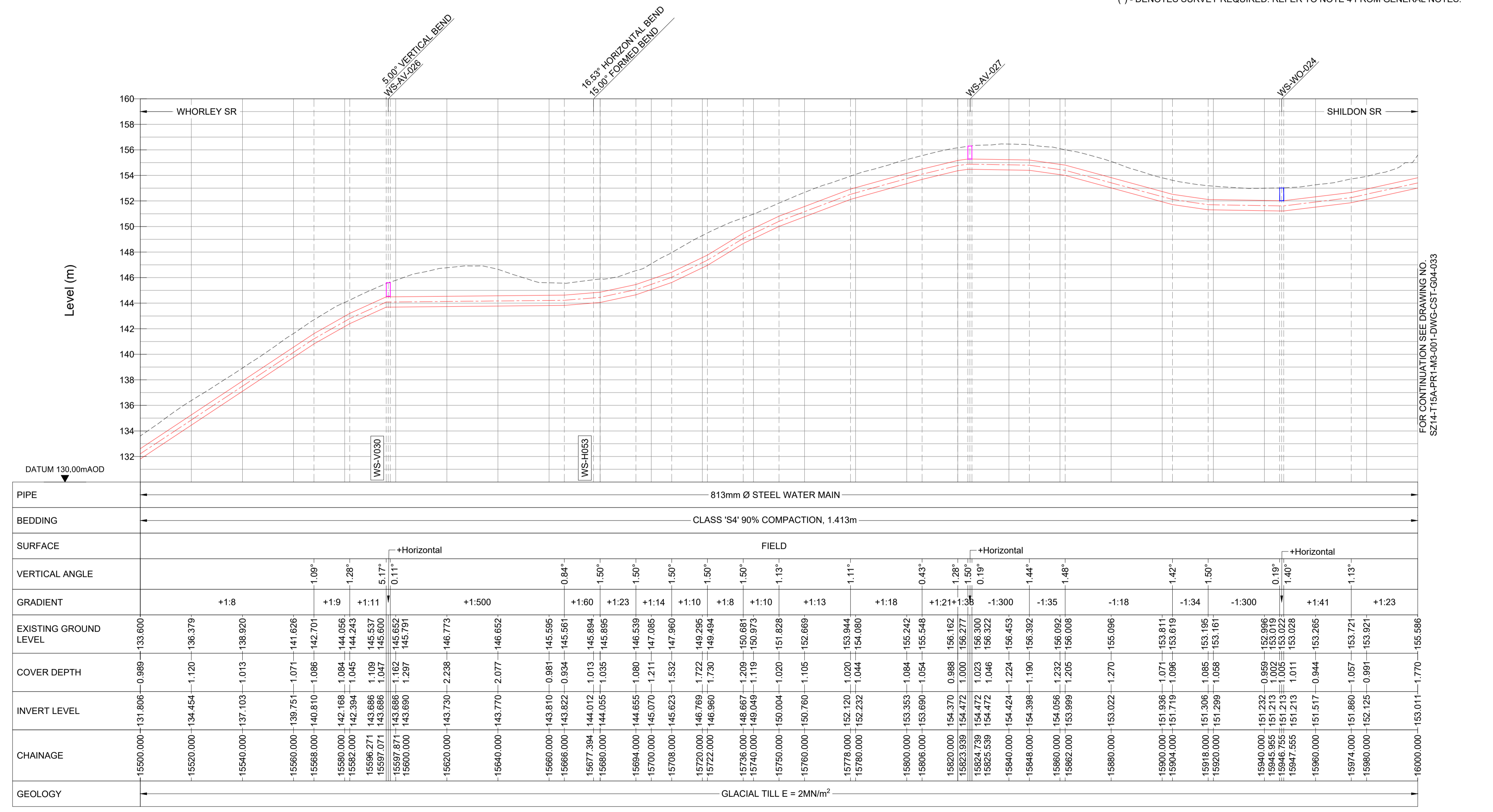
| WHORLEY TO SHILDON SETTING OUT POINTS | | |
|---------------------------------------|------------|------------|
| CHAINAGE (m) | EASTING | NORTHING |
| 15520 | 421281.517 | 526473.545 |
| 15560 | 421319.781 | 526485.201 |
| 15600 | 421358.045 | 526496.856 |
| 15640 | 421396.309 | 526508.511 |
| 15680 | 421434.255 | 526520.844 |
| 15720 | 421467.622 | 526542.905 |
| 15760 | 421500.988 | 526564.965 |
| 15800 | 421534.355 | 526587.025 |
| 15840 | 421567.722 | 526609.085 |
| 15880 | 421601.089 | 526631.145 |
| 15920 | 421634.456 | 526653.205 |
| 15960 | 421667.823 | 526675.265 |
| 16000 | 421701.190 | 526697.326 |

| VERTICAL BEND | | |
|---------------|------------|------------|
| SOP NO. | EASTING | NORTHING |
| WS-V030 | 421354.478 | 526495.770 |

| HORIZONTAL BEND | | |
|-----------------|------------|------------|
| SOP NO. | EASTING | NORTHING |
| WS-H053 | 421432.081 | 526519.407 |

| WASHOUT | | |
|-----------|------------|------------|
| SOP NO. | EASTING | NORTHING |
| WS-WO-024 | 421656.850 | 526667.845 |

| AIRVALVE | | |
|-----------|------------|------------|
| SOP NO. | EASTING | NORTHING |
| WS-AV-026 | 421355.244 | 526496.003 |
| WS-AV-027 | 421554.992 | 526600.668 |



Drawing Status:
FOR REVIEW BY LEAD APPOINTED PARTY

Suitability:
S4

| Rev. | Description | Date | Drawn | Chk'd | App'd |
|------|-------------|------------|-------|-------|-------|
| P06 | FOR REVIEW | 17.11.2023 | AJ | RH | SK |
| P05 | FOR REVIEW | 10.10.2023 | AJ | RH | SK |
| P04 | FOR REVIEW | 18.09.2023 | AJ | RH | SK |
| P03 | FOR REVIEW | 26.07.2023 | AJ | RH | SK |
| P02 | FOR REVIEW | 30.06.2023 | AJ | RH | SK |

Note:-
 IF THIS DRAWING IS FOUND TO BE IN ANY WAY INACCURATE, PLEASE ADVISE THE RECORD OFFICE IMMEDIATELY AND COMPLETE AN AMENDMENT FORM.



CONTRACTOR: FARRANS
REF. NO.: WN019/0205-4.11
I.D. PROJECT NO.: WN019/0205

Drawing Title:
 TEES STRATEGIC TRANSFER MAIN
 WHORLEY SR TO SHILDON SR
 PLAN AND LONGITUDINAL SECTION

Dwg No:
 SZ14-T15A-PR1-M3-001-DWG-CST-G04-032

| | | | | |
|----------|------------|--------|----------|---------|
| Sheet: | Date: | Sheet: | Scale: | Rev No: |
| 32 OF 33 | 17.11.2023 | A1 | AS SHOWN | P06 |

LONGITUDINAL SECTION
 HORIZONTAL SCALE 1:1000 VERTICAL SCALE 1:200

