

Steel / Ductile Iron Pipes PN16 to seal at 16barg						
Gasket Specification	DN100	DN300	DN600	DN700	DN800	DN900
Torque setting (Nm)	49	160	480	467	534	600
C.O.F.	0.120					
Torque sequence	As per Drg: 40018-001-DWG-CST-G02-001 Bolt Specification Grade 4.6					

FARRANS A CBM COMPANY

ATKINS Member of the SNC-Lavalin Group

Atkins Limited
Chadwick House, Birchwood Park, Warrington, WA3 6AE
Direct: 01925 238319

LEGEND:

- PLANNING BOUNDARY
- WORKING BOUNDARY
- WATERCOURSE
- PROPOSED PIPE ROUTE
- PUBLIC RIGHT OF WAYS
- TREE
- L.V.
- A.V.
- W.O.
- SETTING OUT POINT
- ELECTRIC POLE
- HAZARD IDENTIFIER
- CLAY STANK

EXISTING SERVICES:

- WATER MAIN
- SEWER MAIN
- ELECTRIC-HV
- ELECTRIC-HV OVERHEAD
- ELECTRIC-LV
- ELECTRIC-LV OVERHEAD
- ELECTRIC LINE
- BT UNDERGROUND
- BT OVERHEAD
- BT-VIRGIN MEDIA
- GAS-LOW PRESSURE
- GAS-MEDIUM PRESSURE
- STORM WATER MAIN
- STREET LIGHT CABLE
- GAS WORKING SAFETY ZONE
- POWER LINE SAFETY ZONE

REFERENCE:
SZ14-T15A-PR1-M3-001-DWG-CST-G04-034: GENERAL NOTES / REFERENCES
40018-001-DWG-CST-G02-001: FLANGE MANAGEMENT DRAWING

SAFETY, HEALTH AND ENVIRONMENTAL INFORMATION

In addition to the hazards/risks normally associated with the types of work detailed on this drawing, note the following:

CONSTRUCTION
REFER DRA DOCUMENT NO. 40018_001_DOC_C01_001.

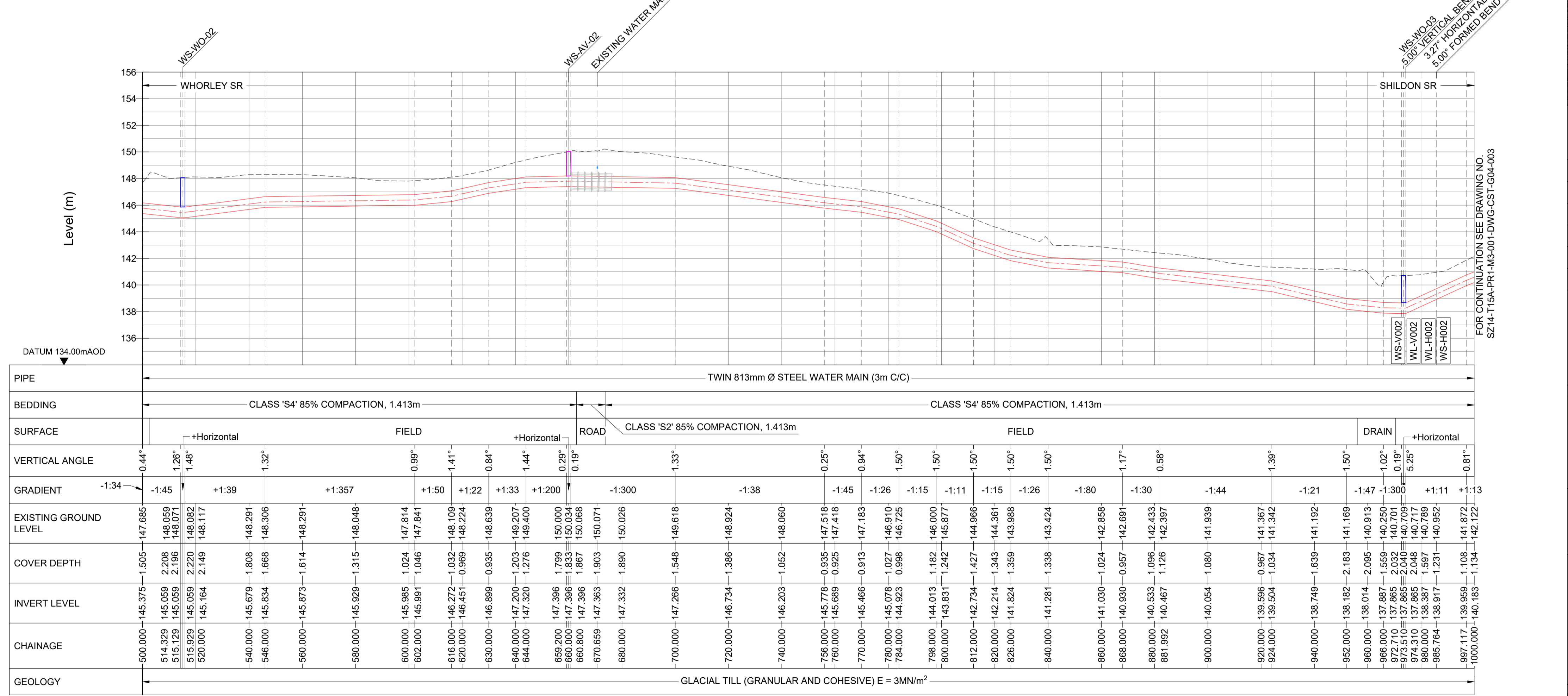
MAINTENANCE/CLEANING
REFER DRA DOCUMENT NO. 40018_001_DOC_C01_001.

DECOMMISSIONING/DEMOLITION
REFER DRA DOCUMENT NO. 40018_001_DOC_C01_001.

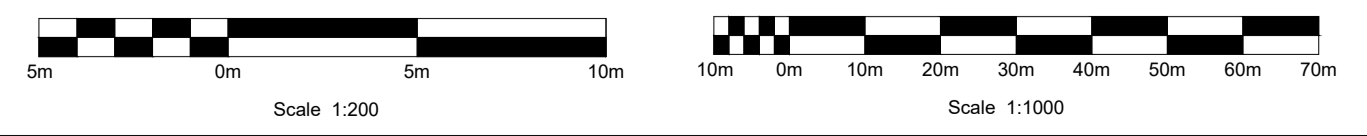
It is assumed that all works will be carried out by a competent contractor working, where appropriate, to an approved method statement

VERTICAL BEND		
SOP NO.	EASTING	NORTHING
WS-V002	412550.904	516803.008
WL-V002	412551.229	516800.026
HORIZONTAL BEND		
SOP NO.	EASTING	NORTHING
WS-H002	412562.290	516804.251
WL-H002	412562.610	516801.263
WHORLEY TO SHILDON SETTING OUT POINTS		
CHAINAGE (m)	EASTING	NORTHING
520	412099.275	516753.721
560	412139.039	516758.061
600	412178.802	516762.400
640	412218.566	516766.740
680	412258.330	516771.079
720	412298.094	516775.419
760	412337.858	516779.758
800	412377.622	516784.098
840	412417.386	516788.437
880	412457.150	516792.777
920	412496.914	516797.116
960	412536.678	516801.456
1000	412576.507	516804.986
WHORLEY TO LONG NEWTON SETTING OUT POINTS		
CHAINAGE (m)	EASTING	NORTHING
520	412100.122	516750.796
560	412139.886	516755.135
600	412179.650	516759.475
640	412219.414	516763.814
680	412259.178	516768.154
720	412298.942	516772.493
760	412338.705	516776.833
800	412378.469	516781.172
840	412418.233	516785.512
880	412457.997	516789.851
920	412497.761	516794.191
960	412537.525	516798.530
1000	412577.357	516802.026

AIRVALVE		
SOP NO.	EASTING	NORTHING
WS-AV-02	412238.448	516768.909
WL-AV-02	412238.882	516765.939
WASHOUT		
SOP NO.	EASTING	NORTHING
WS-WO-02	412094.433	516753.193
WS-WO-03	412550.108	516802.921
WL-WO-02	412094.758	516750.211
WL-WO-03	412550.424	516799.938



LONGITUDINAL SECTION
HORIZONTAL SCALE 1:1000 VERTICAL SCALE 1:200



KEY PLAN
SCALE: NTS

Drawing Status:
FOR REVIEW BY LEAD APPOINTED PARTY

Suitability:
S4

Rev.	Description	Date	Drawn	Chk'd	App'd
P06	FOR REVIEW	17.11.2023	AJ	RH	SK
P05	FOR REVIEW	10.10.2023	AJ	RH	SK
P04	FOR REVIEW	18.09.2023	AJ	RH	SK
P03	FOR REVIEW	26.07.2023	AJ	RH	SK
P02	FOR REVIEW	30.06.2023	AJ	RH	SK

Note:-
IF THIS DRAWING IS FOUND TO BE IN ANY WAY INACCURATE, PLEASE ADVISE THE RECORD OFFICE IMMEDIATELY AND COMPLETE AN AMENDMENT FORM.

CONTRACTOR: FARRANS
REF. NO.: WN019/0205-4.11
I.D. PROJECT NO.: WN019/0205

Drawing Title:
TEES STRATEGIC TRANSFER MAIN
WHORLEY SR TO SHILDON SR
PLAN AND LONGITUDINAL SECTION

Dwg No:
SZ14-T15A-PR1-M3-001-DWG-CST-G04-002

Sheet: 2 OF 33
Date: 17.11.2023
Sheet: A1
Scale: AS SHOWN
Rev No: P06

