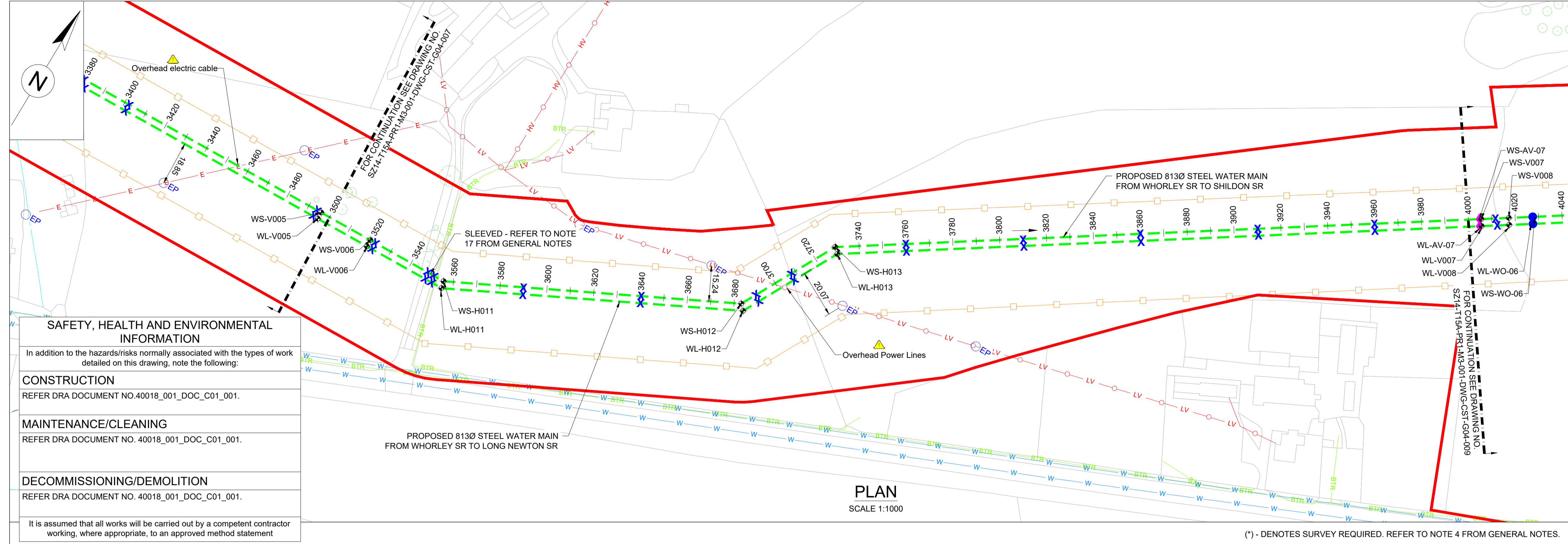


LEGEND:

- PLANNING BOUNDARY
- WORKING BOUNDARY
- WATERCOURSE
- PROPOSED PIPE ROUTE
- PUBLIC RIGHT OF WAYS
- TREE
- L.V.
- A.V.
- W.O.
- SETTING OUT POINT
- ELECTRIC POLE
- HAZARD IDENTIFIER
- CLAY STANK

EXISTING SERVICES:

- WATER MAIN
- SEWER MAIN
- ELECTRIC-HV
- ELECTRIC-HV OVERHEAD
- ELECTRIC-LV
- ELECTRIC-LV OVERHEAD
- ELECTRIC LINE
- BT UNDERGROUND
- BT OVERHEAD
- BT-VIRGIN MEDIA
- GAS-LOW PRESSURE
- GAS-MEDIUM PRESSURE
- STORM WATER MAIN
- STREET LIGHT CABLE
- GAS WORKING SAFETY ZONE
- POWER LINE SAFETY ZONE



SAFETY, HEALTH AND ENVIRONMENTAL INFORMATION
In addition to the hazards/risks normally associated with the types of work detailed on this drawing, note the following:

CONSTRUCTION
REFER DRA DOCUMENT NO.40018_001_DOC_C01_001.

MAINTENANCE/CLEANING
REFER DRA DOCUMENT NO. 40018_001_DOC_C01_001.

DECOMMISSIONING/DEMOLITION
REFER DRA DOCUMENT NO. 40018_001_DOC_C01_001.

It is assumed that all works will be carried out by a competent contractor working, where appropriate, to an approved method statement

(*) - DENOTES SURVEY REQUIRED. REFER TO NOTE 4 FROM GENERAL NOTES.

HORIZONTAL BEND

SOP NO.	EASTING	NORTHING
WL-H011	415057.313	517319.930
WL-H012	415172.425	517377.896
WL-H013	415194.374	517419.367
WS-H011	415056.557	517322.908
WS-H012	415170.221	517380.145
WS-H013	415192.080	517421.446

VERTICAL BEND

SOP NO.	EASTING	NORTHING
WS-V006	415020.754	517321.828
WL-V006	415020.844	517318.830

WHORLEY TO SHILDON SETTING OUT POINTS

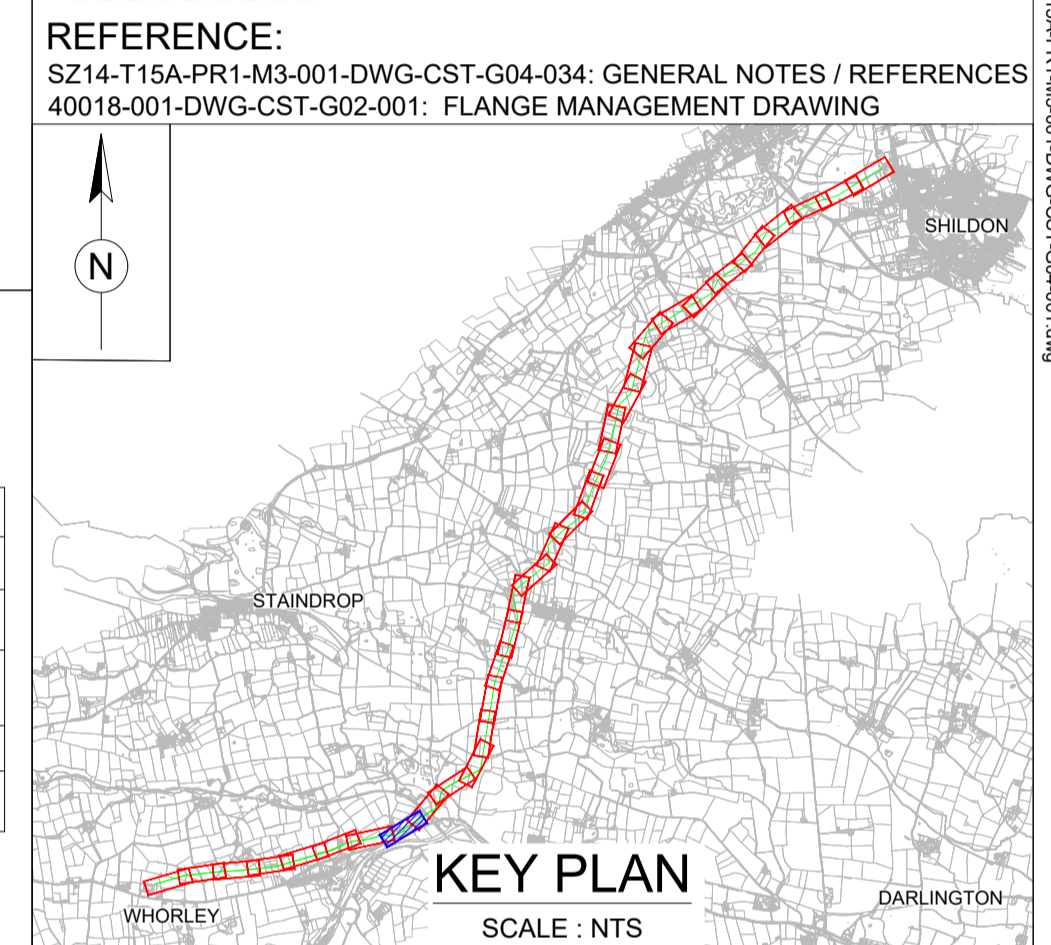
CHAINAGE (m)	EASTING	NORTHING
3520	415020.754	517321.828
3560	415060.291	517324.788
3600	415096.017	517342.779
3640	415131.743	517360.769
3680	415167.469	517378.759
3720	415187.491	517412.775
3760	415217.252	517438.113
3800	415250.604	517460.196
3840	415283.956	517482.279
3880	415317.308	517504.362
3920	415350.659	517526.444
3960	415384.011	517548.527
4000	415417.363	517570.610

WHORLEY TO LONG NEWTON SETTING OUT POINTS

CHAINAGE (m)	EASTING	NORTHING
3520	415021.614	517318.853
3560	415061.140	517321.857
3600	415096.866	517339.847
3640	415132.592	517357.838
3680	415168.318	517375.828
3720	415188.986	517409.186
3760	415218.121	517435.090
3800	415251.473	517457.173
3840	415284.825	517479.256
3880	415318.177	517501.339
3920	415351.529	517523.422
3960	415384.880	517545.505
4000	415418.232	517567.588

Steel / Ductile Iron Pipes PN16 to seal at 16 barg

Gasket Specification	DN100	DN300	DN600	DN700	DN800	DN900
Rubber encased steel core (Type G-S-S)						
Torque setting (Nm)	49	160	480	467	534	600
C.O.F.	0.120					
Torque sequence	As per Drg: 40018-001-DWG-CST-G02-001 Bolt Specification Grade 4.6					



Drawing Status: FOR REVIEW BY LEAD APPOINTED PARTY
Suitability: S4

Rev.	Description	Date	Drawn	Chk'd	App'd
P06	FOR REVIEW	17.11.2023	AJ	RH	SK
P05	FOR REVIEW	10.10.2023	AJ	RH	SK
P04	FOR REVIEW	18.09.2023	AJ	RH	SK
P03	FOR REVIEW	26.07.2023	AJ	RH	SK
P02	FOR REVIEW	30.06.2023	AJ	RH	SK

Note:-
IF THIS DRAWING IS FOUND TO BE IN ANY WAY INACCURATE, PLEASE ADVISE THE RECORD OFFICE IMMEDIATELY AND COMPLETE AN AMENDMENT FORM.

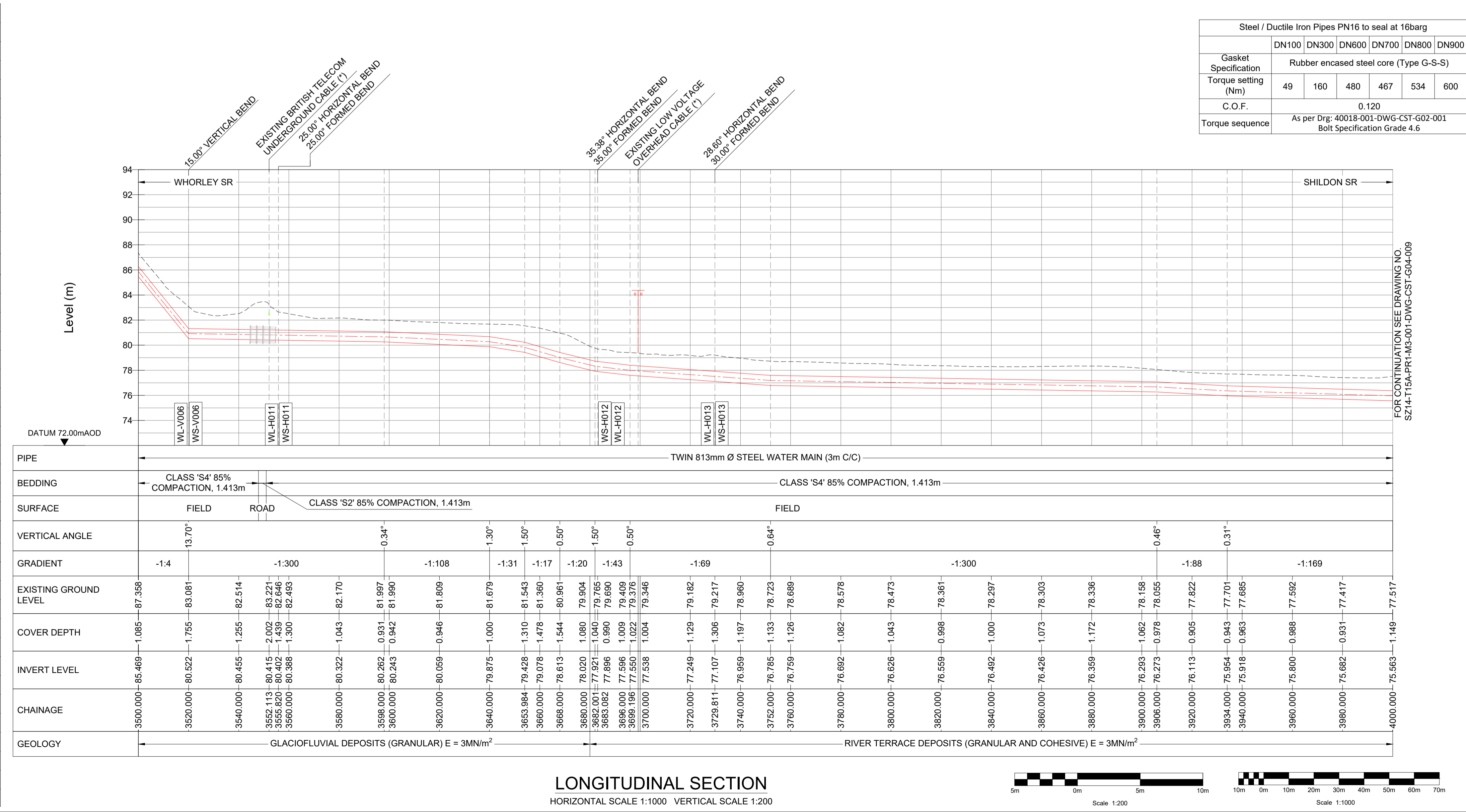


CONTRACTOR: FARRANS
REF. NO.: WN019/0205-4.11
I.D. PROJECT NO.: WN019/0205

Drawing Title:
TEES STRATEGIC TRANSFER MAIN
WHORLEY SR TO SHILDON SR
PLAN AND LONGITUDINAL SECTION

Dwg No: SZ14-T15A-PR1-M3-001-DWG-CST-G04-008

Sheet: 8 OF 33	Date: 17.11.2023	Sheet: A1	Scale: AS SHOWN	Rev No: P06
----------------	------------------	-----------	-----------------	-------------



LONGITUDINAL SECTION
HORIZONTAL SCALE 1:1000 VERTICAL SCALE 1:200

